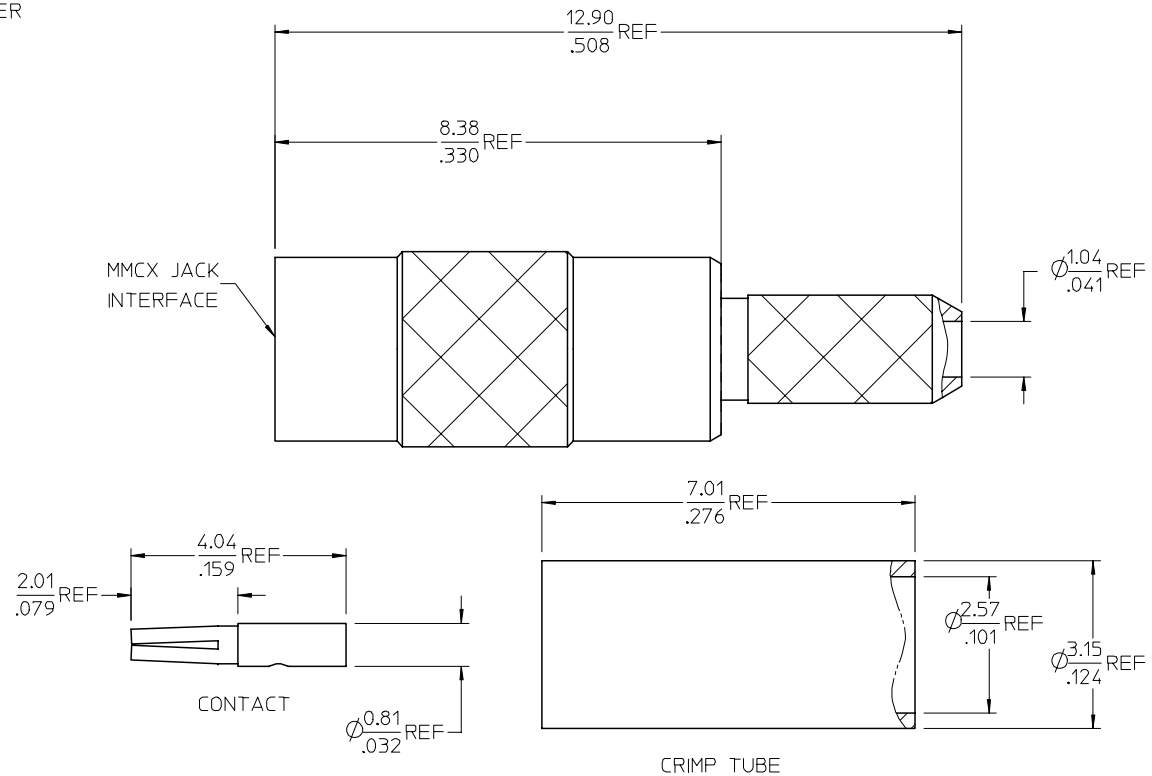
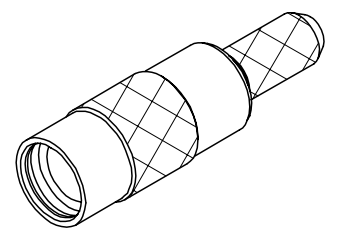


13 12 11 10 9 8 7 6 5 4 3 2 1

MATERIALS AND FINISHES
 BODY, CRIMP TUBE BRASS
 PLATED GOLD (1 MICROINCHES MIN)
 CENTER CONTACT BERYLLIUM COPPER
 PLATED SEE TABLE
 INSULATOR TEFLON



AS-89678-6900	CABLE ASSEMBLY INSTR.
ES-73599-0000-016	INTERFACE
SPECIFICATION	DESCRIPTION

73415-3213	SINGLE PIECE 73415-3211 PER BAG
73415-3212	SINGLE PIECE 73415-3210 PER BAG
73415-3211	GOLD (30 MICROINCHES MIN)
73415-3210	GOLD (10 MICROINCHES MIN)
PART NO.	PLATING

CHG: ADDED 73415-3212 THRU 73415-3213. EC NO: URF2007-0254 DRAWN: ARROBERTSON 2007/01/04 CHKD: 2007/01/04 APPR: JIM ENEER 2007/01/04 A3	QUALITY SYMBOLS =0 =0	GENERAL TOLERANCES (UNLESS SPECIFIED)		DIMENSION STYLE MM/IN		SCALE	DESIGN UNITS METRIC	THIRD ANGLE PROJECTION	
		4 PLACES ± --- ± --- 3 PLACES ± --- ± --- 2 PLACES ± --- ± --- 1 PLACE ± --- ± --- ANGULAR ± 2 °	mm INCH DRAWN BY DATE GMH 2001/04/20 CHECKED BY DATE APPROVED BY DATE	TITLE MMCX JACK, RG178 50 OHMS, EWR-2603 MMCX-JC		MATERIAL NO. SEE TABLE		DOCUMENT NO. SD-73415-321	SHEET NO. 1 OF 1
DRAFT WHERE APPLICABLE MUST REMAIN WITHIN DIMENSIONS				SIZE C		THIS DRAWING CONTAINS INFORMATION THAT IS PROPRIETARY TO MOLEX INCORPORATED AND SHOULD NOT BE USED WITHOUT WRITTEN PERMISSION			

12 11 10 9 8 7 6 5 4 3 2 1