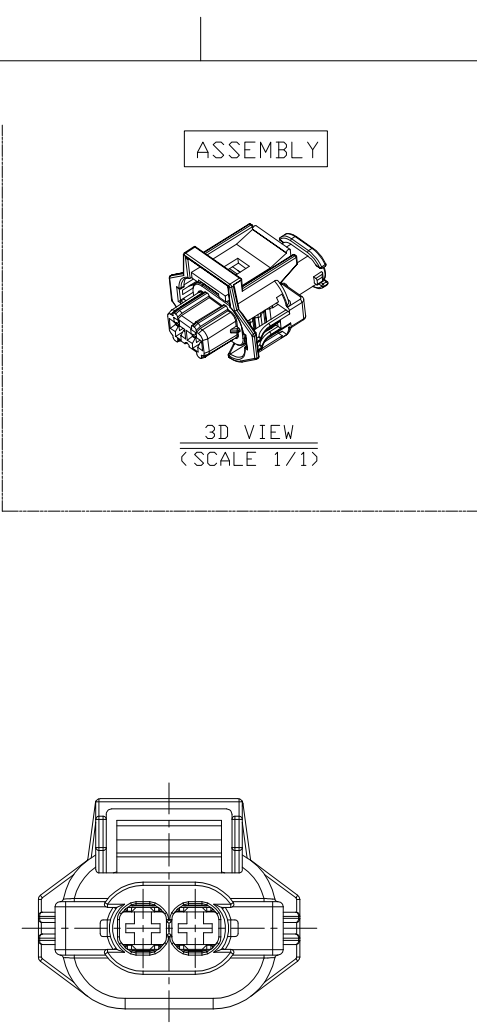
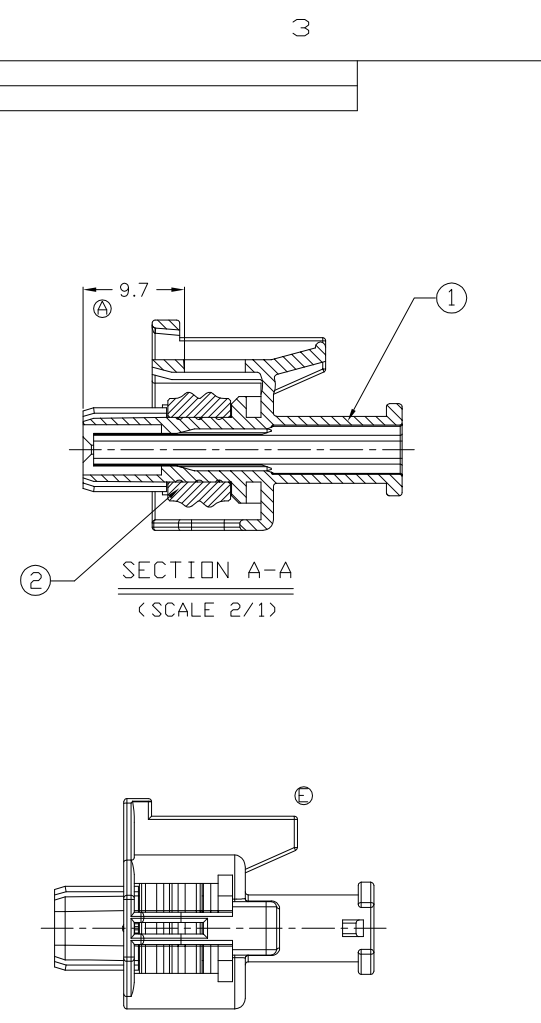
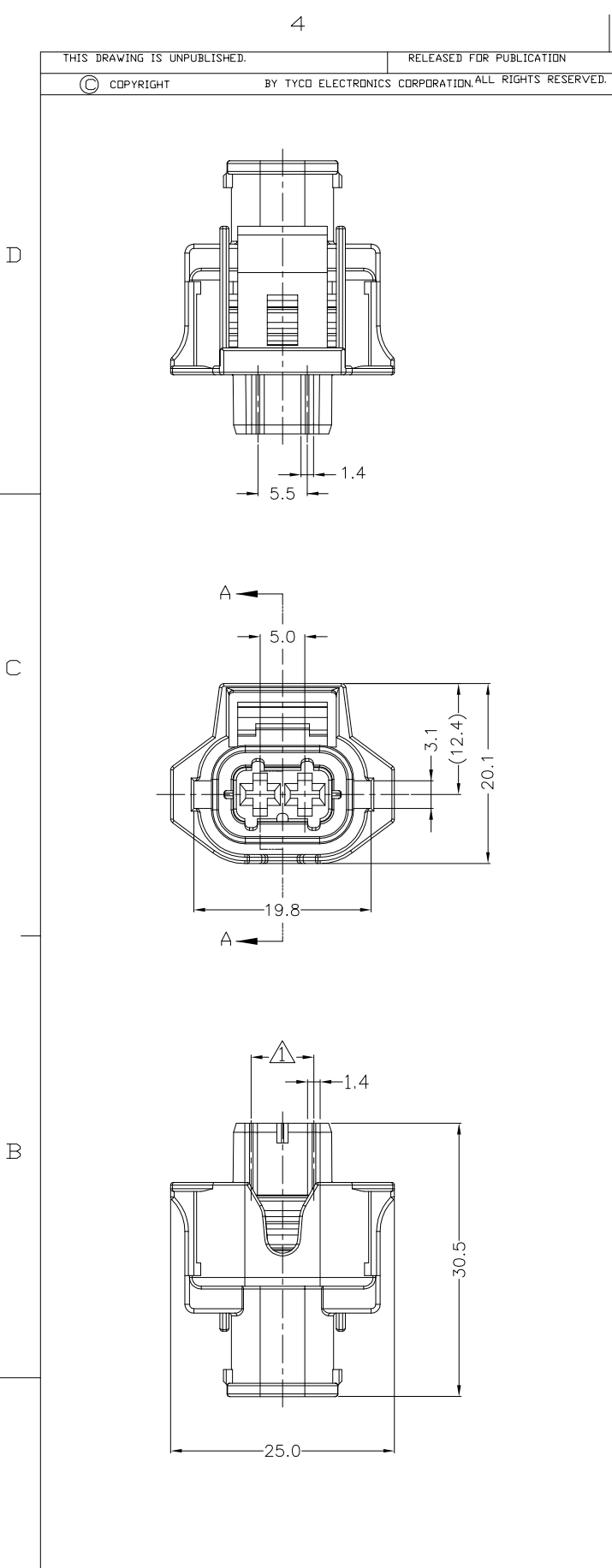
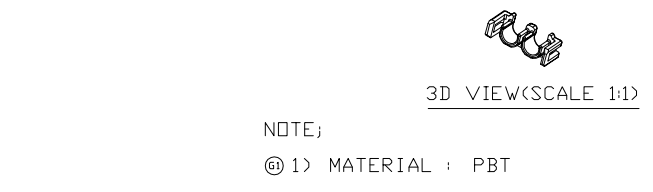
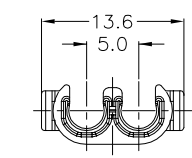
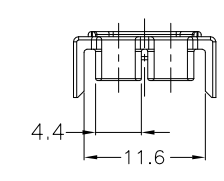


REVISIONS					
P	LTR	DESCRIPTION	DATE	DWN	APVD
E		REVISED<ECR-06-022709>	30, JUN, '06	IS	JK
F		REVISED<ECR-07-000190>	04, JAN, '07	IS	JK
F1		REVISED<ECR-11-008995>	28, APR, '11	YM	HG
G		REVISED<ECR-12-013083>	18, JUN, '12	JM	HG
G1		REVISED<ECR-14-014192>	29, SEP, '14	JM	HG
G2		REVISED<ECR-16-006117>	27, APR, '16	JM	JW



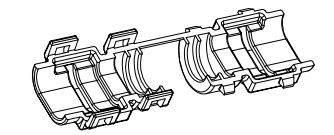
ACCESSORIES DRAWING
 ① DBL HSG : P/N:936103
 SCALE : 2/1



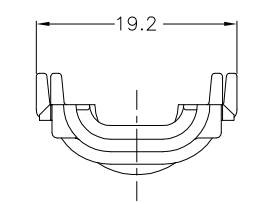
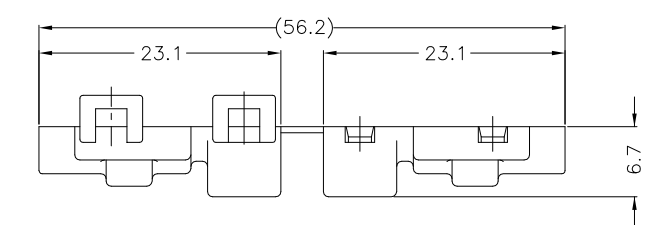
NOTE;
 ①) MATERIAL : PBT

② COVER HSG : P/N:936111
 SCALE : 2/1

NOTE;
 ①) MATERIAL : NYLON 66
 2) CORRUGATOR DIAMETER : ϕ 7.0



3D VIEW (SCALE 1:1)



4. APPLIED RECEPTACLE CONTACT P/N:

DESCRIPTION	2.8mm SENSOR-FLAT RECEPTACLE	
Part NO.	967542	967543
WIRE SIZE(mm ²)	0.5 ~ 1.0	1.25 ~ 2.5

5. APPLIED WIRE SEAL P/N:

DESCRIPTION	SINGLE-WIRE SEAL(5mm Hole)	
Part NO.	828904	828905
INSULATION DIA. (φ)	1.2 ~ 2.1mm	2.2 ~ 3.0mm

(TABLE 1)

CODE I: 936059-1 ③ CODE I: 936059-3	CODE II: 1-936059-1 ④ CODE II: 1-936059-3
⑤ CODE III: 2-936059-1	CODE IV: T. B. D

Q' TY	COLOR	MATERIAL	DESCRIPTION	P/N	NO
① 1	SIGNAL GRAY	SILICONE	INNER SEAL	936800-3	2
② 1	ULTRAMARINE BLUE	SILICONE	INNER SEAL	936800-2	2
③ 1	RED ORANGE	SILICONE	INNER SEAL	936800-1	2
④ 1	BLACK	PA 66 GF15	PLUG HSG	3-936102-1	1
⑤ 1	BLACK	PA 66 GF15	PLUG HSG	2-936102-1	1
⑥ 1	DARK GRAY	PA 66 GF15	PLUG HSG	1-936102-3	1
⑦ 1	BLACK	PA 66 GF15	PLUG HSG	1-936102-1	1
⑧ 1	GRAY	PA 66 GF15	PLUG HSG	936102-3	1
⑨ 1	BLACK	PA 66 GF15	PLUG HSG	936102-1	1

THIS DRAWING IS A CONTROLLED DOCUMENT FOR TYCO ELECTRONICS CORPORATION. IT IS SUBJECT TO CHANGE AND THE CONTROLLING ENGINEERING ORGANIZATION SHOULD BE CONTACTED FOR THE LATEST REVISION.

DWN : JM JEON
 CHK : -
 APVD : JW JUNG

TE connectivity

NAME: 2.8mm SEALED 2P PLUG ASSEMBLY (FLAT SENSOR CONNECTOR)

APPLICATION SPEC: 114-18144

SIZE: A2 CAGE CODE: 00779 CODE: 936059

MATERIAL: SEE TABLE FINISH: -

CUSTOMER DRAWING SCALE 2/1 SHEET 1 OF 1 REV G2

NOTE;
 ① CODING IS AS FOLLOWS; SEE TABLE 1.
 2. 0.15 MAX. WARPAGE AND 0.2 MAX. FLASH ARE PERMISSIBLE
 3. SURFACE DEFECTS ARE NOT ACCEPTABLE AS FOLLOWS: SINK, WELD LINES, HAIRCRACKS, STAINS & SCORES