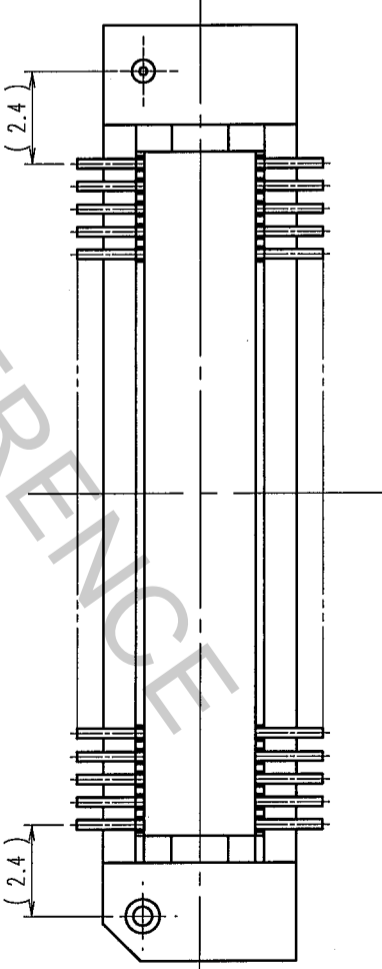
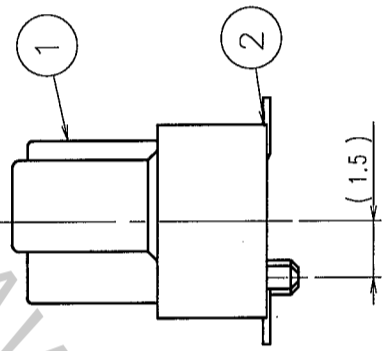
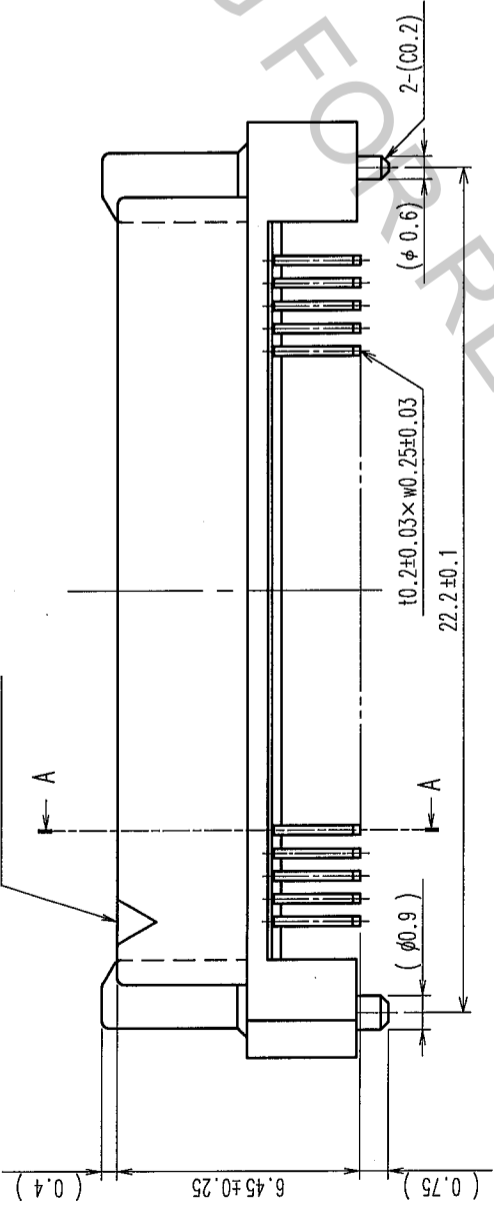
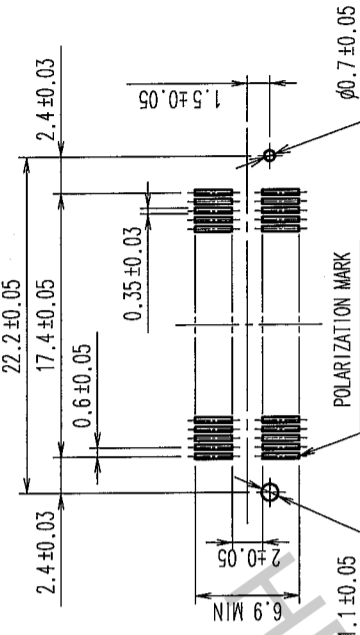


COUNT	DESCRIPTION OF REVISIONS	BY	CHKD	DATE	COUNT	DESCRIPTION OF REVISIONS	BY	CHKD	DATE
△									
△									
△									

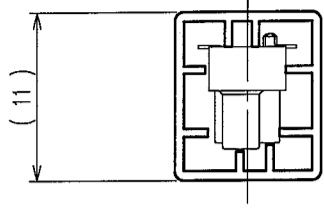
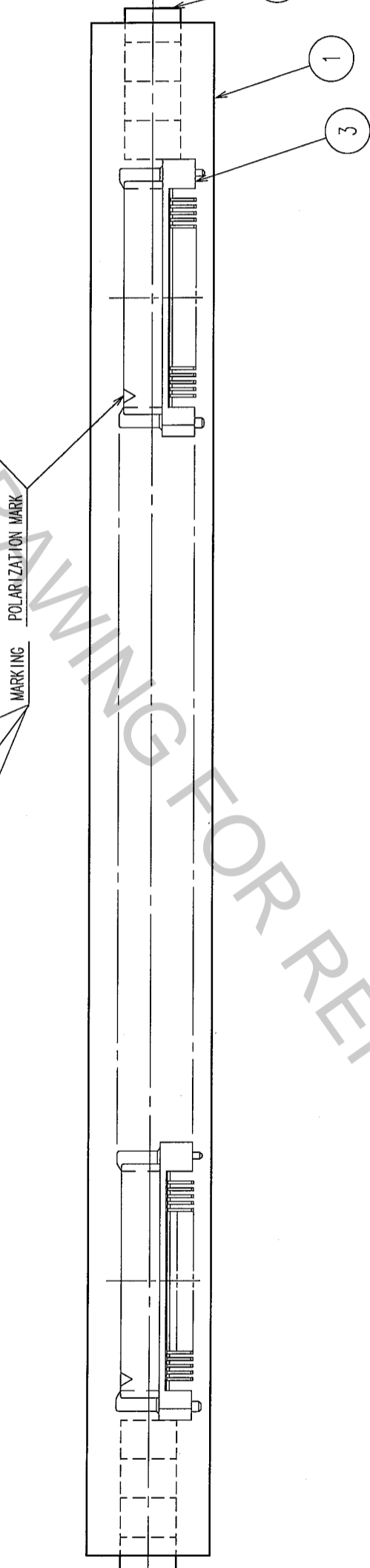
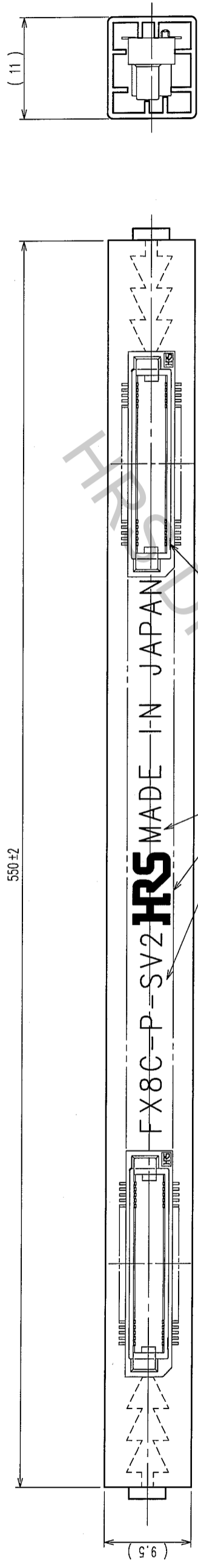
RECOMMENDED LAND PATTERN DIMENSION OF PCB (MOUNTING SIDE) (2:1)



NOTE. 1. LEAD CO-PLANARITY SHALL BE 0.1mm MAX.
 2. TUBE PACKAGING SHALL BE APPLIED FOR THIS PRODUCT.
 SEE NEXT PAGE FOR DETAILS.
 3. FOR MODIFICATION, ETC., PREVENTIVE HOLE FOR SINK MARK MAY BE ADDED ACCORDING TO CIRCUMSTANCES.
 4. THE DIMENSIONS IN PARENTHESES ARE FOR REFERENCE.

1	PPS	LIGHT BROWN (UL94V-0)	2	PHOSPHOR BRONZE	CONTACT AREA: GOLD 0.1μm min. LEAD AREA: TIN-PLATING 1μm min. UNDER PLATING: NICKEL 1μm min.
NO.	MATERIAL	FINISH, REMARKS	NO.	MATERIAL	FINISH, REMARKS
CL					
DRAWING NO.		PART NO.		APPROVED	
EDC3-150841-21		FX8C-60P-SV2(91)		H. Okawa	
SCALE		DRAWN		DESIGNED	
5:1		K. NAKAMURA		K. NAKAMURA	
UNITS		05.12.09		05.12.09	
mm					
HIROSE ELECTRIC CO., LTD.		CODE NO.		RELEASED	
		CL578-0541-3-91		05.12.12	
		1		2	

COUNT	DESCRIPTION OF REVISIONS	BY	CHKD	DATE	COUNT	DESCRIPTION OF REVISIONS	BY	CHKD	DATE
△					△				
△					△				
△					△				



NOTE 1. 1 TUBE : 21 CONNECTORS.
 2. THE DIMENSIONS IN PARENTHESES ARE FOR REFERENCE.

2 POLYVINYL CHLORIDE (STOPPER)		3 POLYVINYL CHLORIDE (CONNECTOR)	
NO.	MATERIAL	FINISH, REMARKS	FINISH, REMARKS
1	POLYVINYL CHLORIDE		
DRAWN		DESIGNED	CHECKED
K.NAKAMURA		K.NAKAMURA	K.Ogawa
05.12.09		05.12.09	05.12.12
CL		APPROVED	
		H. Okawa	
DRAWING NO.		PART NO.	
EDC3-150841-21		FX8C-60P-SV2(91)	
SCALE		CODE NO.	
FREE		CL578-0541-3-91	
UNITS			
mm			

TO	
PCK	