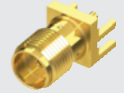
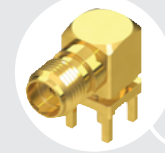


SMA-J-P-H-ST-TH1

SMA-J-P-H-RA-TH1



SMA-J-P-H-ST-EM1

50Ω SMA JACKS

SPECIFICATIONS

For complete specifications and recommended PCB layouts see www.samtec.com?SMA-TH, www.samtec.com?SMA-SM, www.samtec.com?SMA-EM, www.samtec.com?SMA-MT or www.samtec.com?SMA-PN

Contact Material:

BeCu

Shell Material:

Brass

Insulator Material:

PTFE (-PN)

Operating Temp Range:

-65°C to +125°C

Contact Resistance:

Center Contact: 6mΩ max

Outer Contact: 2mΩ max

Insulator Resistance:

5,000 MΩ

Impedance:

50Ω

Dielectric Withstanding Voltage:

1,000 Vrms

Frequency Range:

0~20 GHz

(Cable dependent)

Working Voltage:

335V

RoHS Compliant:

Yes

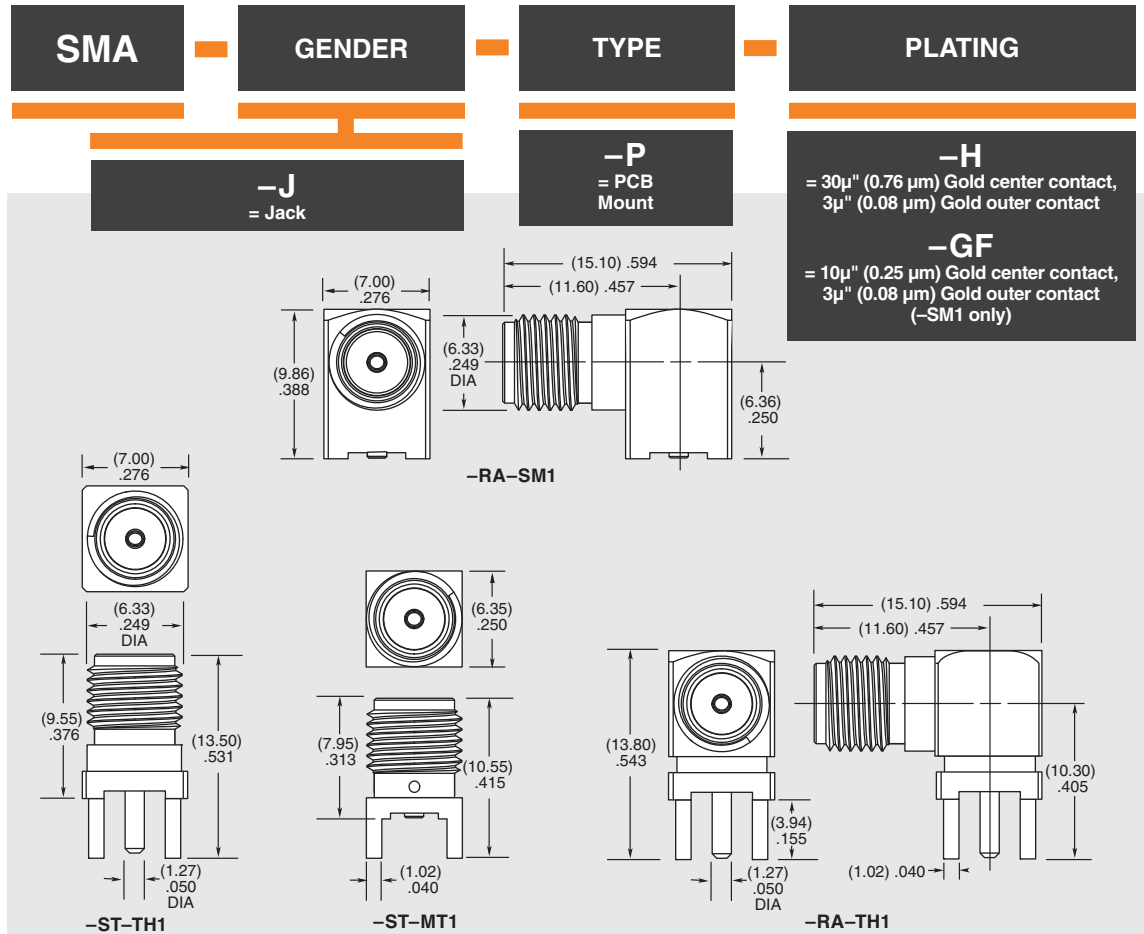
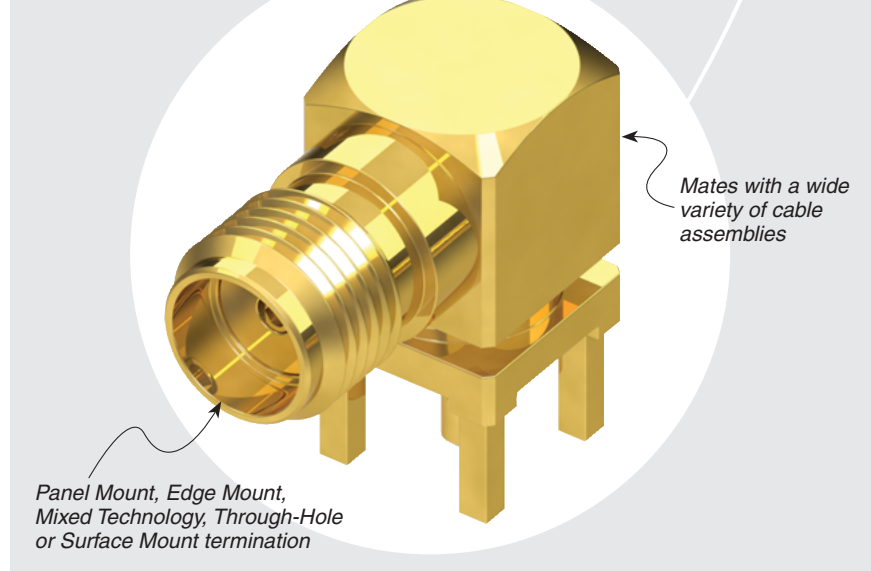
Processing:

Lead-Free Solderable:

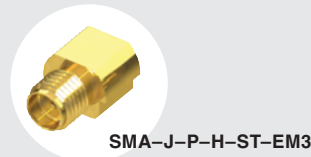
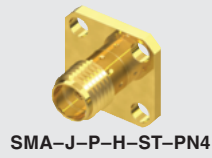
Yes

Mates with:

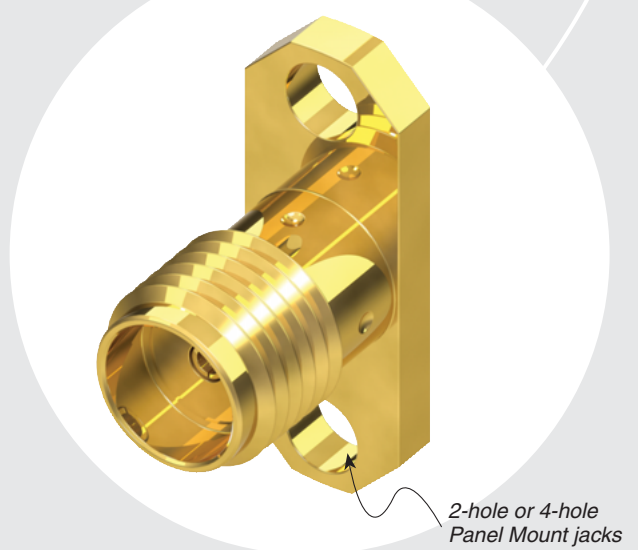
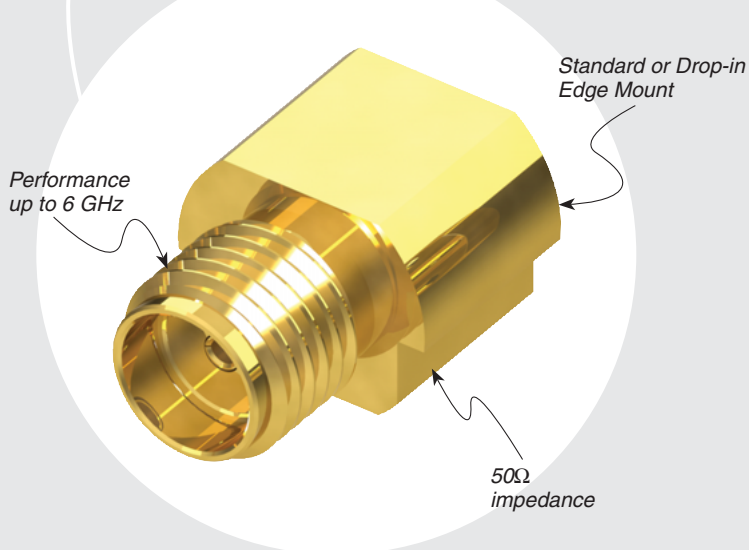
RF174, RF316, RF058, RF405, RF402, RS316, GRF1H-C, IJ5H, RF23S, BE25S



Note: While optimized for 50Ω applications, this connector can also perform well in certain 75Ω applications. Contact RFGroup@samtec.com for further information.



SMA SERIES

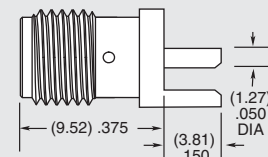
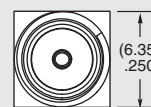
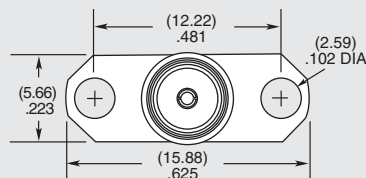
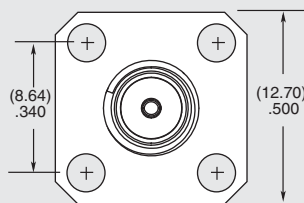


ORIENTATION

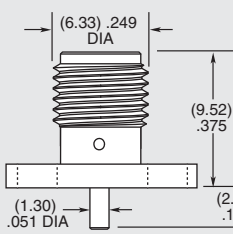
- ST = Straight
- RA = Right Angle

TERMINATION

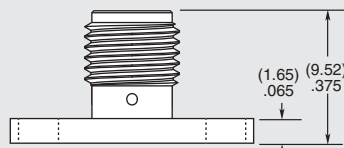
- TH1 = Through-hole
- SM1 = Surface Mount (-GF-RA only)
- EM1 = Edge Mount (-ST only)
- EM3 = Drop-in Edge Mount (-ST only)
- MT1 = Mixed Technology (-ST only)
- PN2 = 2-Hole Panel Mount (-ST only)
- PN4 = 4-Hole Panel Mount (-ST only)



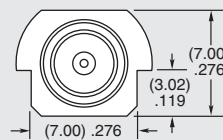
-ST-EM1



-ST-PN4



-ST-PN2



-ST-EM3

