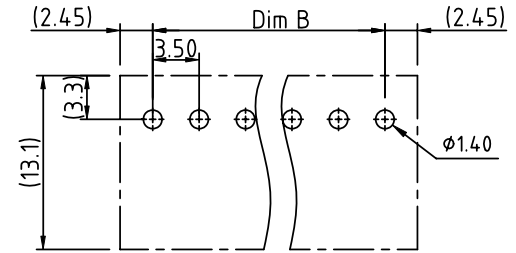
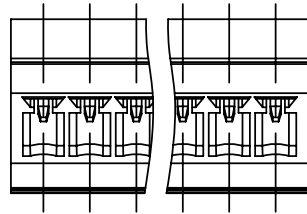
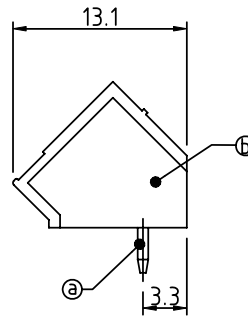
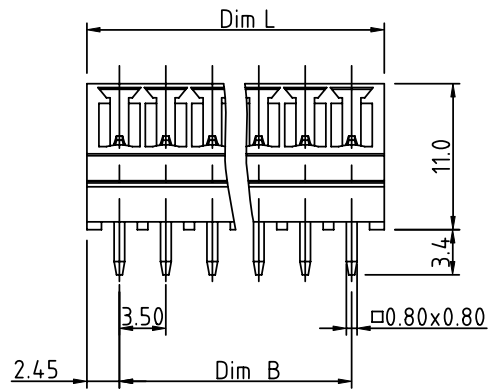


PRODUCT NUMBER	PITCH
VKxx11x000J0G	3.50 mm



RECOMMENDED P.C.B LAYOUT
TOP VIEW



Material:

- Item (a) Male contact pin: Copper Tin plated
- Item (b) Terminal (housing): Thermoplastic (UL94V-0)

Electrical:

- Voltage rating: 300V/300V
- Current rating: 8A/10A
- Withstanding Voltage: 1.6 KV/2.5KV
- Operating temperature: -40°C to +115°C
- Soldering temperature: 260°C±5°C/5 Sec
- Safety Approval: cULus /VDE



PART NO.: VK xx 11 x 0 00J0 G

Dim L = (N-1) x 3.5+4.9
Dim B = (N-1) x 3.5
N= number of poles

Poles	Tolerance
2-6p	±0.15
7-12p	±0.20
13-18p	±0.25
19-24p	±0.30

Solid block	No. of poles	Color	RoHS compliant (lead<4%) In copper Alloy
0	2	Black (RAL9005)	
02	3	Red (RAL3001/D)	
03	4	Orange(RAL2011/P)	
...	...	Yellow(RAL1018/A)	
...	...	Green(RAL6018/T)	
24	6	Blue (RAL5015/A)	
	8	Grey(RAL7035/D)	
	9	White(RAL1102)	
	C	Green(RAL6018/U)	

mat'l. code		surface ASME Y14.5	tolerance ASME Y14.5	projection	product family TERMINAL BLOCK
ltr	ecn no	dr	date	 MM	title TERMINAL BLOCK PLUGGABLE SOCKET,45DEGREE,WITHOUT FLANGE
angles		tolerances unless otherwise specified			
X°±1'		X.X±0.3		scale 	dwg no VKxx11x000J0G sheet 1 of 1 size A4
X.XX±0.1		X.XX±0.1			
dr	ENGR	chr	appd	EVIN ZHONG 042214 EVIN ZHONG 042214 HANKE FENG 042214 SHI JUN 042214	
sheet index	revision sheet	A 1			