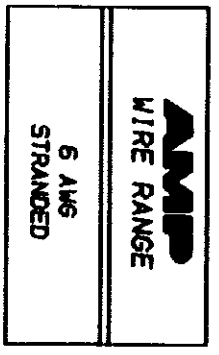


DRAWING MADE IN THIRD ANGLE PROJECTION

THIS DRAWING IS UNPUBLISHED. RELEASED FOR PUBLICATION
 COPYRIGHT 19 BY AMP INCORPORATED. ALL INTERNATIONAL RIGHTS RESERVED.

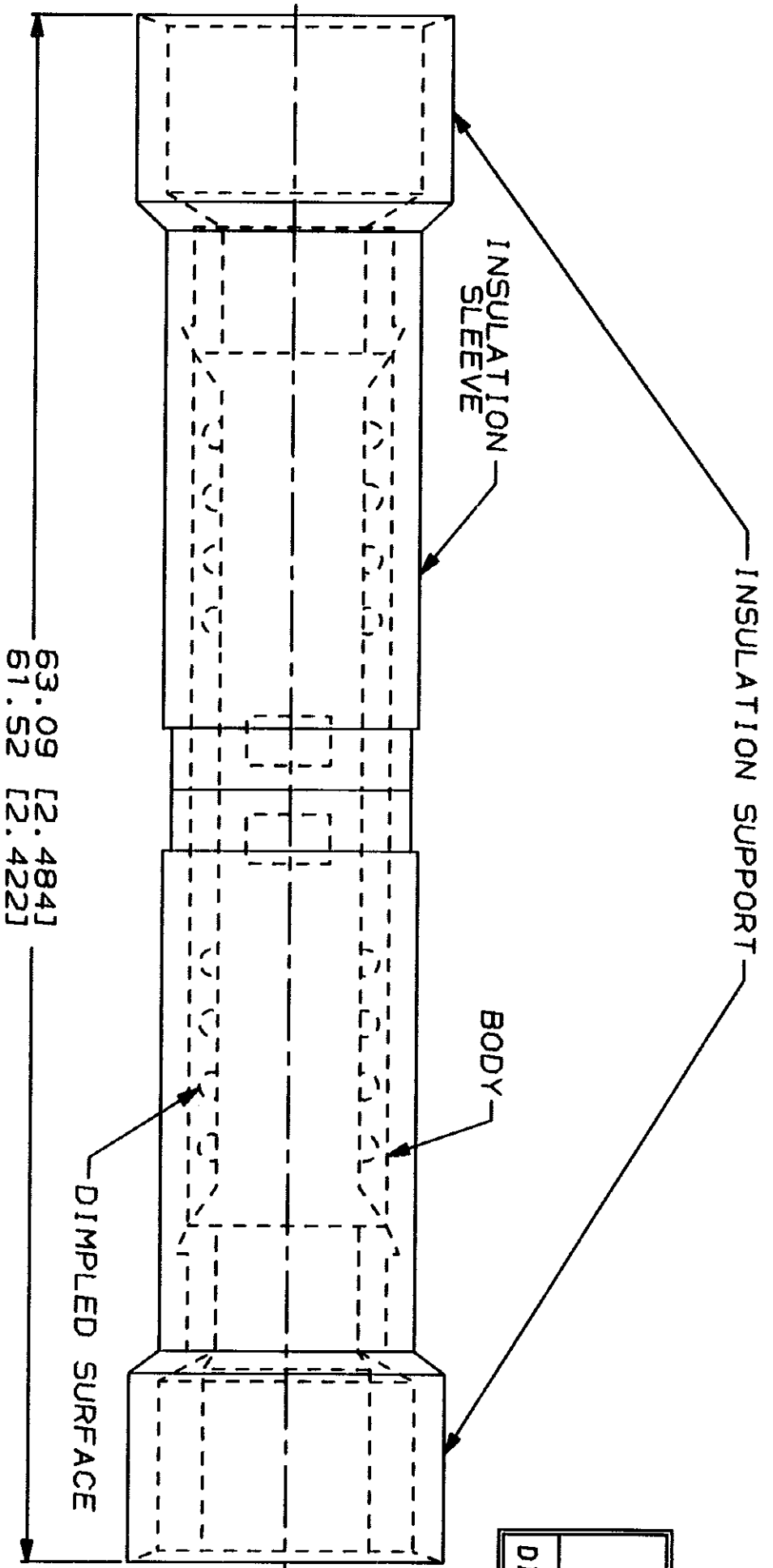
LOC	DIST	P	ZONE	LTR	DESCRIPTION	DATE	APPRO
G	14				D REVISED & REDRAWN PER 0720-0303-93	8-30-93	98

REVISIONS	
DESCRIPTION	DATE
D REVISED & REDRAWN PER 0720-0303-93	8-30-93



METRIC
 DIMENSIONS LISTED IN mm [INCHES]

NOTE:
 1. WIRE INSULATION DIA
 10.54[.415] MAX



AMP INCORPORATED CUSTOMER SERVICE SYSTEMS		MAX RECOMMENDED OPERATING TEMPERATURE: 105°C		DO NOT SCALE PRINT. DIMENSIONS SPECIFIED UNLESS OTHERWISE INDICATED. TOLERANCES ON: 2 PLG DEC ± 0.20(0.008) 3 PLG DEC ± 0.25(0.010) ANGLES ± 0.5°		DR 8-30-93 S.S. GOLDER		QTY 100		LOOSE PC		324659	
FOR ADDITIONAL PRODUCT INFORMATION OR COPIES OF DRAWINGS AND TECHNICAL DOCUMENTS 1-800-522-6752		PRODUCT INFORMATION CENTER		VOLTAGE RATING: 500 V MAX		CHK 8-30-93 R. HENNEY		PACKAGE TYPE		AMP Incorporated		PART NO	
FOR APPLICATION TOOLING ASSISTANCE CENTER 1-800-722-1111		CIRCULAR MIL AREA: 10,54-16,77mm² [20,800-39,100]		MATERIAL: COPPER PER ASTM B-152 NYLON, COLOR: BLUE		APPD 8-30-93 M. BILIS		NAME		Harrisburg, PA 17105-3608			
FOR ORDER ENTRY 1-800-526-5142		STRANDED		FINISH TIN PLATE		APPD 8-30-93 M. BILIS		SPICE, BUTT, MULTIPLE TO MULTIPLE, TERMINAL, WIRE SIZE: 6 AWG		SIZE		DRAWING NO	
				PER MIL-T-10727		PRODUCT SPEC		SCALE		CAGE CODE		00779	
						APPLICATION SPEC		WEIGHT		NTS		G=324659	
												1 OF 1	

AMP 1400-15 REV 3-92 10 JAN 1994 15:17:30 AMP10744 <UJ128A>DEPT1132>AMP10744>U. TERMINL-SPLICE-CUST CUSTOMER DRAWING