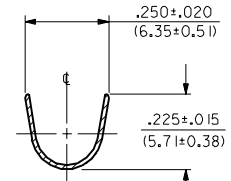
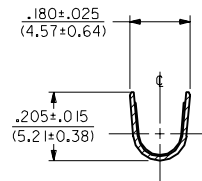
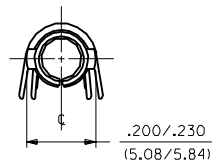


PART NO.	ENG. NO.	CHARACTERISTICS		
		MATERIAL	FINISH	FORM
018-12-1604	42547-0001	A	2	L
018-12-1603	42547-0002	A	2	C



SECT. "B-B"

SECT. "A-A"



CHARACTERISTICS LEGEND

**MATERIAL:**

A) PHOS. BRONZE, ALLOY  
 \*C51000; .013/(0.33) THICK,  
 EXTRA HARD

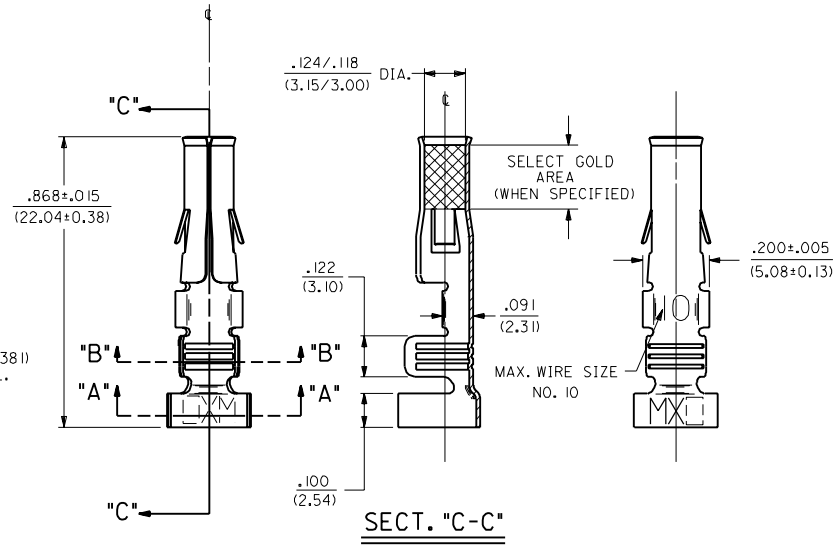
**FINISH:**

(\*P) PRECEEDING FINISH NO.  
 DESIGNATES PREPLATED MATERIAL

1) UNFINISHED  
 2) P122 ELECTRO TIN PLATE .000150/(0.0038) I  
 MIN. OVER .000030/(0.00076) MIN. NICKEL.

**FORM:**

L) LOOSE  
 C) CHAIN



SECT. "C-C"

- NOTES:
1. TERMINAL FOR USE WITH .125/(3.17) SERIES HOUSINGS AND WILL ACCEPT 10 THRU 14 AWG WIRE HAVING A .180/(4.57) MAX. DIAMETER INSULATION.
  2. INSERTION FORCE: 6.0 LBS. MAX. WHEN TERMINAL IS INSERTED INTO .125/(3.17) DIA. CORE HOLE.
  3. PULL OUT FORCE: 30 LBS. MIN. RETENTION IN HOUSING .

B	ADD SELECT AREA ECR #UD 0230 3-5-90 RW
A	FINAL RELEASE ERO 20046 89/10/18 COMSTOCK
MFG. SH. REV. LTR.	REVISIONS

UNLESS OTHERWISE SPECIFIED  
 TOLERANCES: ANGULAR ± .0010

DIMENSIONS SHOWN (METRIC) INCH	INCH	METRIC
3 PLACE	± .010	---
2 PLACE	± .014	± 0.25
1 PLACE	---	± 0.35

DRAFT WHERE APPLICABLE MUST  
 REMAIN WITHIN DIMENSIONS

MOXLE INCORPORATED  
 LISLE, ILL. 60532 U.S.A.

SEE CHART  
 SD-42547-\*

CRIMP TERMINAL, FEMALE,  
 .125/(3.17) DIA 10-14 AWG  
 .180/(4.57) DIA. INSUL.

MOXLE INCORPORATED  
 SHEET NO. 1 OF 1  
 DATE 89/10/18

DRWG. NO. SD-42547-\*

DRWG. BY: GMC CHKD. BY: RW  
 APP'D. BY: GWF SCALE: 4 : 1  
 FILE NAME: S42547X1.DWG

THIS DRAWING CONTAINS INFORMATION THAT IS PROPRIETARY TO  
 MOXLE INC. AND SHOULD NOT BE USED WITHOUT WRITTEN PERMISSION.

DIV. CP SIZE C

42547