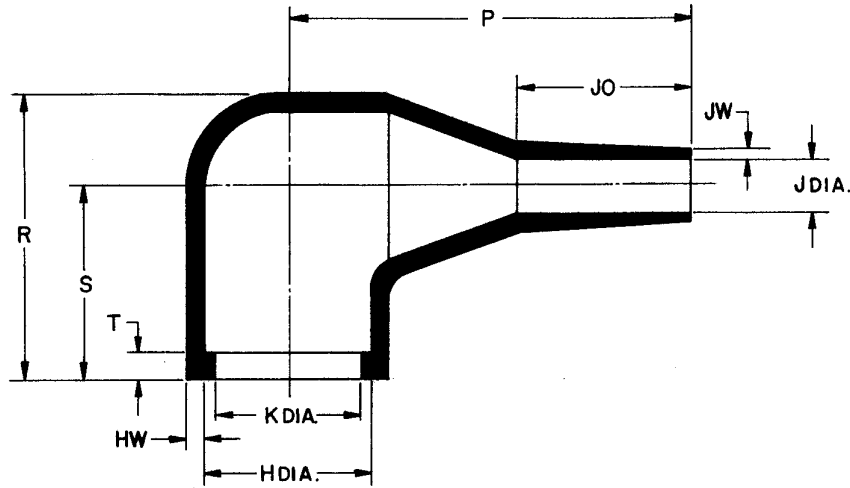


REVISIONS		
LTR	DESCRIPTION	DATE
B	DISCLOSURE NOTE REMOVED	10 MARCH 1988



NOTES:

- ALL DIMENSIONS ARE IN (INCHES (MILLIMETERS)).
- DIMENSIONS APPEARING IN TABLE ARE AS FOLLOWS:
 - a - AS SUPPLIED
 - b - AFTER UNRESTRICTED RECOVERY

TABLE OF DIMENSIONS

PART NUMBER	H		J		K		P		R		S		T		JO		HW		JW		SHELL SIZE ADAPTER
	MIN _a	MAX _b	MIN _a	MAX _b	MIN _a	MAX _b	± 5% _b	± 5% _b	± 5% _b	± 5% _b	± 5% _b	± 5% _b	± 5% _b	± 5% _b	± 20% _b	± 20% _b	± 20% _b	± 20% _b			
222K332	.72 (18,4)	.70 (17,8)	.47 (12,0)	.25 (6,4)	.72 (18,4)	.62 (15,8)	1.61 (41,0)	1.14 (29,0)	.79 (20,0)	.12 (3,0)	.71 (18,0)	.08 (2,0)	.04 (1,0)								10
222K342	.96 (24,5)	.90 (23,0)	.79 (20,0)	.31 (8,0)	.96 (24,5)	.82 (21,0)	2.17 (55,0)	1.30 (33,0)	.87 (22,0)	.12 (3,0)	.71 (18,0)	.09 (2,2)	.04 (1,0)								14
222K352	1.17 (29,8)	1.14 (29,0)	.87 (22,0)	.41 (10,4)	1.17 (29,8)	1.01 (25,7)	2.32 (59,0)	1.65 (42,0)	1.10 (28,0)	.12 (3,0)	.71 (18,0)	.09 (2,2)	.04 (1,0)								16
222K363	1.42 (36,1)	1.34 (34,0)	1.02 (26,0)	.53 (13,6)	1.42 (36,1)	1.21 (30,7)	2.36 (60,0)	1.77 (45,0)	1.18 (30,0)	.12 (3,0)	.79 (20,0)	.09 (2,2)	.05 (1,2)								20

ORDERING INFORMATION

BASE PART NUMBER 222K342 -3
 MATERIAL DASH NUMBER _____
 -3 POLYOLEFIN, SEMI-RIGID (RT-301)
 -25 ELASTOMER, SEMI-RIGID (RT-1325)

If this document is printed it becomes uncontrolled.
 Check for the latest revision.

THERMOFIT • SPECIFICATION CONTROL DRAWING • MOLDED PARTS

DRAWN	<i>Hanna B. 5/2/80</i>	Raychem	RAYCHEM CORPORATION 300 CONSTITUTION DRIVE MENLO PARK, CALIFORNIA 94025	
CHECKED	<i>R. W. Wesley 5/28/80</i>			
DSGN APPD	<i>B. Gregory 4/29/80</i>	TITLE BOOT, 90°		
MFG APPD	<i>Butt 6/2/80</i>			
QC APPD	<i>S. S. 6-7-80</i>			
MKTG APPD	<i>Gully 6-2-80</i>			
PROJECT		CODE IDENT. NO. 00080	DWG. NO. 222K332 THRU 363	
		SIZE B	SCALE NONE	SHEET OF