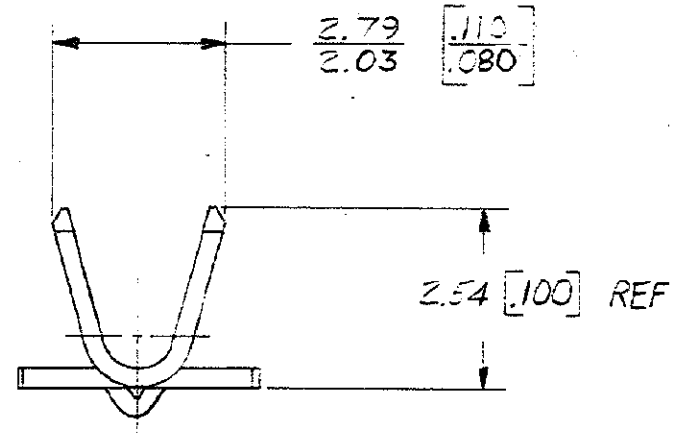
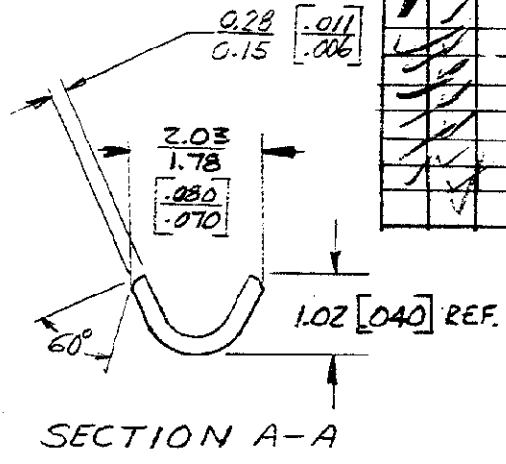
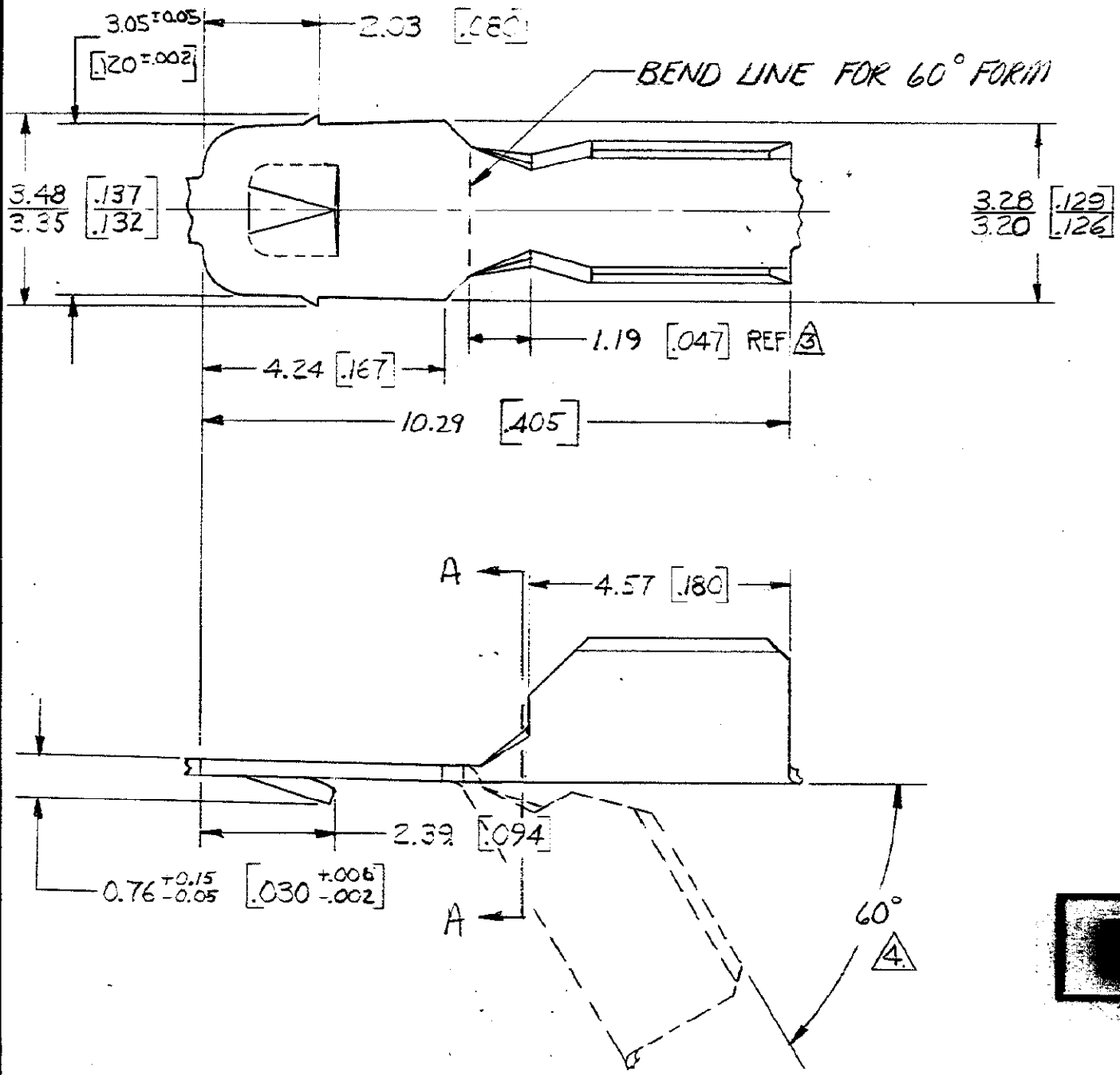


© COPYRIGHT 1978 BY AMP INCORPORATED, HARRISBURG, PA. ALL INTERNATIONAL RIGHTS RESERVED. AMP INCORPORATED PRODUCTS COVERED BY U. S. AND FOREIGN PATENTS AND/OR PATENTS PENDING.



REVOLUTIONS		DATE	APPROVED
✓	A	9-29-78	SS/BHWL
✓	B	12/20/78	SS/LTF
✓	C	1/10/79	67ENL
✓	D	2/12/79	SS/BHWL
✓	E	3/14/79	SS/BHWL
✓	F	3/26/79	SS/BHWL
✓	G	8-1-79	SS/BHWL
✓	H	5/19/80	SS/BHWL
✓	J	1-29-81	RTJ/JS
✓	K	6-5-86	MSF/64

1. CONTINUOUS STRIP ON REELS
2. DIMS IN BRACKETS ARE IN INCHES.
3. ROLLED UP TRANSITION TO HAVE OUTSIDE SWAGE.
4. MATERIAL TO BE FREE OF FRACTURE AFTER 60° FORMING BEND.
5. DIMENSIONS OF SEC A-A IN TRANSITION AREA TO BE MEASURED DIRECTLY ADJACENT TO EDGE OF WIRE BARREL.
6. FEED OVER EIGHT (8) TERMINALS SHALL BE 95.5 ± .25 [3.760 ± .010] WITH GAGE PER AMP DWG. 104356

METRIC

UNLESS OTHERWISE SPECIFIED DIMENSIONS ARE IN INCHES. MM TOLERANCES ON DECIMALS ±0.38 [015] ANGLES ±	CONTRACT NO
MATERIAL	DR: J Schaffhauer 8/15/78
0.30 [.012] BRASS	CHK: G Yetter 8-16-78
FINISH	APPD: BHWL 8-21-78
	DSGN APPD: BHWL 8-22-78
	OTHER APPD:

TIN OVER COPPER	03-09 ^{mm} [22-18]	62804-2
NONE	03-09 ^{mm} [22-18]	62804-1
FINISH	WIRE RANGE	PART NO
AMP AMP INCORPORATED Harrisburg, Pa.		
NAME BOBBIN TERMINAL		
SIZE	CODE IDENT NO	DRAWING NO
B	00779	62804
SCALE	SHEET	