

used for:

SPECIFICATIONS

Materials

Insulator: Thermoplastic, Glass Filled, UL94V-0 Rated

Contact: Copper Alloy, 30u" Gold Plated

Shell: Copper Alloy, Nickel Plated

Electrical

Insulation Resistance: 1000 Megohms Minimum

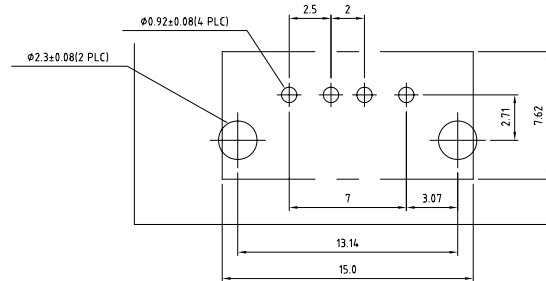
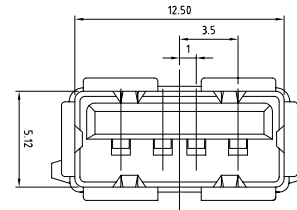
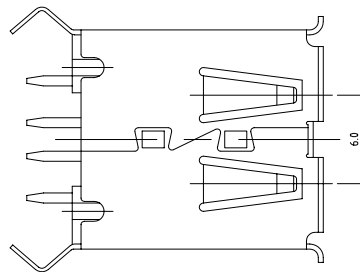
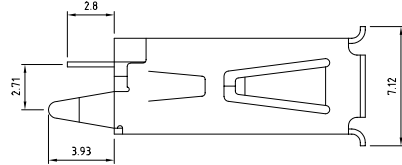
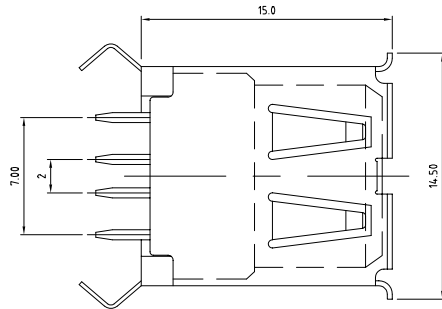
Contact Resistance: 30 Milliohms Maximum Initial

Dielectric Withstanding Voltage: 500V AC for one minute

Current: 1.0 Ampere Maximum Per Contact At 30°C T-Rise

Voltage: 30V AC (rms)

Temperature: -55°C ~ 85°C



Directive 2002/95/EC
 „RoHS“
 Compliant

THIS DRAWING MAY NOT BE COPIED OR REPRODUCED IN ANY WAY, AND MAY NOT BE PASSED ON TO A THIRD PARTY WITHOUT WRITTEN PERMISSION. OWNERSHIP AND COPYRIGHT OF CONEC CORPORATION DO NOT ALTER CAD DRAWING BY HAND	tolerance		finish		Dim. in mm	scale:	
	unless otherwise specified tolerance shall be as follows					material:	
	Decimal:	.xx .xxx	Angles:			SEE SPECIFICATIONS	
	2006	date	name			title: USB 2.0 connector A type PCB Thru-Hole 4pin female RoHS compliant	
	draw.	April 17	Vincent Ke				
	appd.	April 17	Kathy Skelhorn				
	norm						
	d-old					drawing no.:	
	a	origin				AutoCAD 2005	DIN A3
	rev.	description	date	name	CONEC [®]		sheet 1/1
				part no.:	39K1A238		
					33UBAD-04SW12R		