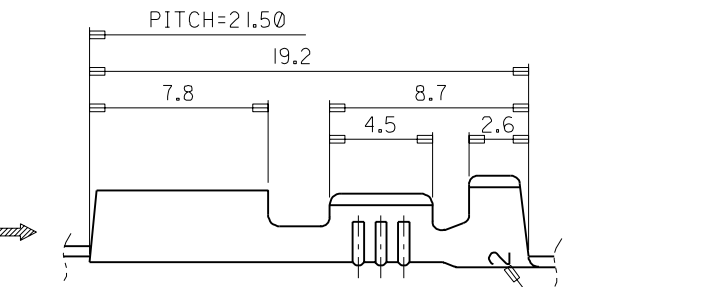
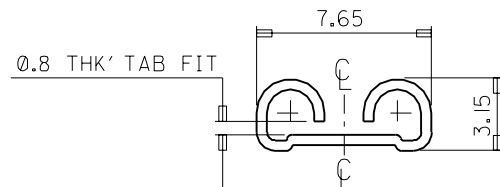
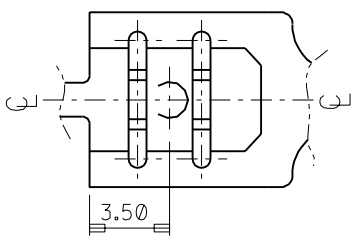


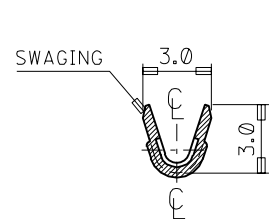
- NOTES
1. MATERIAL : BRASS 0.45THK'
 2. FINISH : 35725-4300 (UNPLATED)
35725-4310 (POST PLATED TIN)
 3. MATING TAB THICKNESS : 0.8mm
 4. RECOMMENDED LENGTH OF WIRE STRIP IS 6.0-6.8mm.



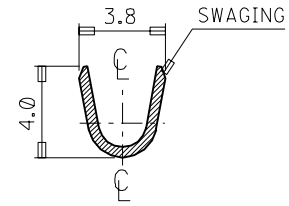
"A" →



VIEW "A"



SEC' : C-C'



SEC' : D-D'

WIRE RANGE AWG #22-#20 (0.3-0.5 mm ²)		MATERIAL BRASS		molex MOLEX-KOREA CO.,LTD.	
INSULATION RANGE Ø 1.5-Ø 2.0		GENERAL TOLERANCE DIMENSION : ±0.3 ANGLE : °1°		DRAWN BY J.S.KANG	CHK'D BY
DIE FEED: 21.50		DIMENSION CLASSIFICATION ▽ : CRITICAL ▼ : MAJOR () : REFERENCE		APP'D BY	SCALE 5/1
APPLICATOR FEED: 21.50		A	REDRAWING	TITLE: .250 SLIP-ON RECEPTACLE (S)	
O'TY/ REEL OR PACK 5,000 O'TY/REEL		LTR	REVISION RECORD	ENG. NO.	SHEET 1 of 1
		REVISE ONLY ON CAD SYSTEM		ENG. NO. SD 35725-43*0	REV A