

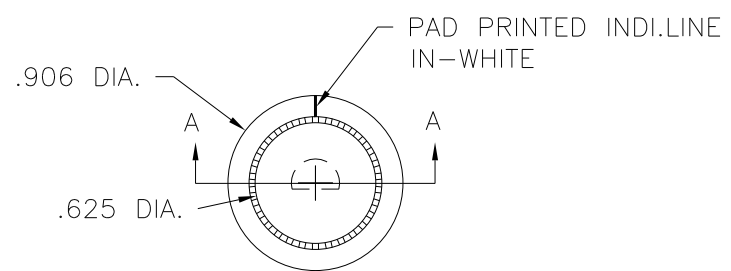
PART NAME: KNOB SCALE: 1:1 DATE: 2/16/60 DR. BY LSP

THIS DRAWING IS THE PROPERTY OF DAVIES MOLDING COMPANY, IS SUBMITTED SOLELY AS A DESIGN OR ENGINEERING PROJECT. WE ACCEPT NO RESPONSIBILITY WHATSOEVER FOR THE PRACTICAL APPLICATION OF THE PIECES MADE TO THIS DESIGN.

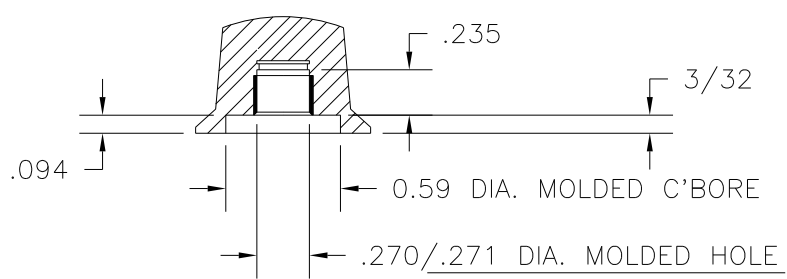
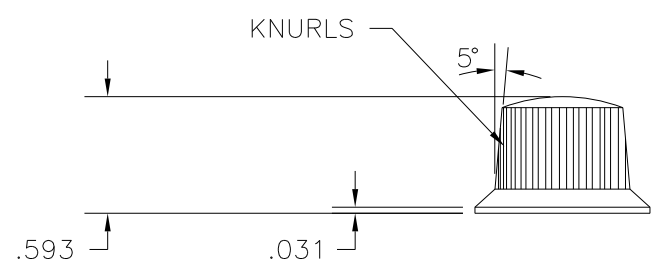
DAVIES MOLDING COMPANY
CAROL STREAM, ILLINOIS 60188

P/N 1610-K
BASE PART 1610-03
SPRING I1125A

CAD/REDRAWN : 10/27/93 : HD

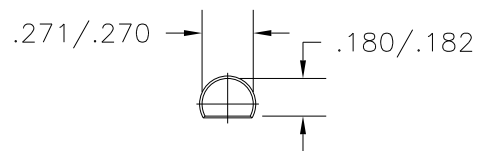


(D)
(C)



SPRING MTG. TO FIT
.250 DIA. SHAFT FLATTED TO .156
SPRING I1125A

SECTION " A-A "



MOLDED HOLE DETAIL

(E)

MATERIAL: G.P. PLENCO PHENOLIC (B11)
COLOR: BLACK

NOTE : AFTER MOLDING PROCESS OF ABOVE PART(S)
SPRING I1125-A MUST BE INSTALLED IN
FINISHING DEPARTMENT.

-	UPDATED/HAD TOOLBOX	EV.	7/29/02
E	ADDED MOLDED HOLE DETAILS	HD	9/29/95
D	SPRING REVI. WAS I-1125	HD	9/19/95
C	WAS SPRING I-376	HD	10/27/93
B	POSITION OF PIN TURNED TO 180°	LSP	9/12/61
A	REDRAWN W/ NO CHANGES	LSP	9/12/61

TOLERANCES: UNLESS OTHERWISE SPECIFIED	DO NOT SCALE DRAWING
DECIMALS: X.XXX ± .005 X.XX ± .015	MM: X.XX ± 0.15MM X.X ± 0.4MM
FRACTIONS ± 1/64	ANG. ± 1°

CHANGES