

## Features

- Quadrature output
- Detent option
- Snap-in PC board mount
- Long operating life
- Incremental output
- Up to 24 full quadrature outputs per revolution

## ES Series - Shaftless Contacting Encoders

### Electrical Characteristics

|  |   |
|--|---|
| Output .....   | 2-bit quadrature code, Channel A leads Channel B turning clockwise (CW) |
| Closed Circuit Resistance .....                          | 5 ohms maximum  |
| Open Circuit Resistance .....                            | 100 K ohms minimum  |
| Contact Rating .....                                     | 10 milliamp @ 10 VDC or 0.1 watt maximum                                |
| Insulation Resistance (500 VDC) .....                    | 1,000 megohms minimum   |
| Dielectric Withstanding Voltage (MIL-STD-202 Method 301) |   |
| Sea Level .....  | 1,000 VAC minimum   |
| Electrical Travel .....                                  | Continuous  |
| Contact Bounce (15 RPM) .....                            | 5 milliseconds maximum  |
| RPM (Operating) .....                                    | 120 maximum   |

### Environmental Characteristics

|                                   |                                       |
|-----------------------------------|---------------------------------------|
| Operating Temperature Range ..... | -40 °C to +85 °C (-40 °F to +185 °F)  |
| Storage Temperature Range .....   | -40 °C to +85 °C (-40 °F to +185 °F)  |
| Humidity .....                    | MIL-STD-202, Method 103B, Condition B |
| Vibration .....                   | 15 G                                  |
| Contact Bounce .....              | 0.1 millisecond maximum               |
| Shock .....                       | 50 G                                  |
| Contact Bounce .....              | 0.1 millisecond maximum               |
| Rotational Life .....             | 200,000 shaft revolutions             |
| IP Rating .....                   | IP 40                                 |

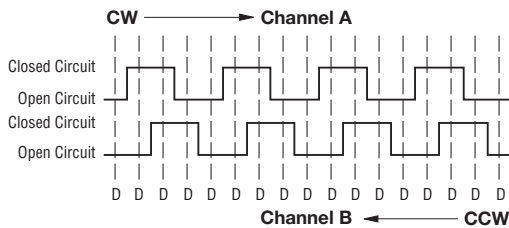
### Mechanical Characteristics

|                                 |  |
|---------------------------------|--|
| Mechanical Angle .....          | Continuous   |
| Running Torque (Detented) ..... | 0.5 to 1.5 N-cm (0.75 to 2.25 oz-in.)  |
| Undetented Torque .....         | 0.17 to 0.8 N-cm (0.25 to 1.25 oz-in.)   |
| Weight .....                    | Approximately 8 gm (0.28 oz.)  |
| Terminals .....                 | Printed circuit board terminals  |
| Soldering Condition             |  |
| Manual Soldering .....          | 96.5Sn/3.0Ag/0.5Cu solid wire or no-clean rosin cored wire; 370 °C (700 °F) max. for 3 seconds |
| Wave Soldering .....            | 96.5Sn/3.0Ag/0.5Cu solder with no-clean flux; 260 °C (500 °F) max. for 5 seconds               |
| Wash Processes .....            | Not recommended  |
| Marking .....                   | Manufacturer's name and trademark, part number and date code                                   |
| Hardware .....                  | No hardware supplied   |

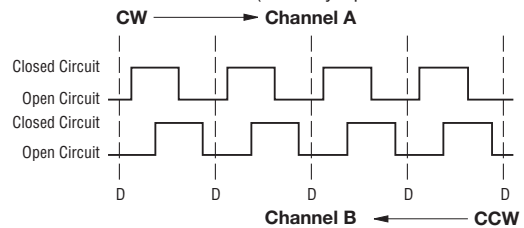
### Quadrature Output Table

This table is intended to show available outputs as currently defined.

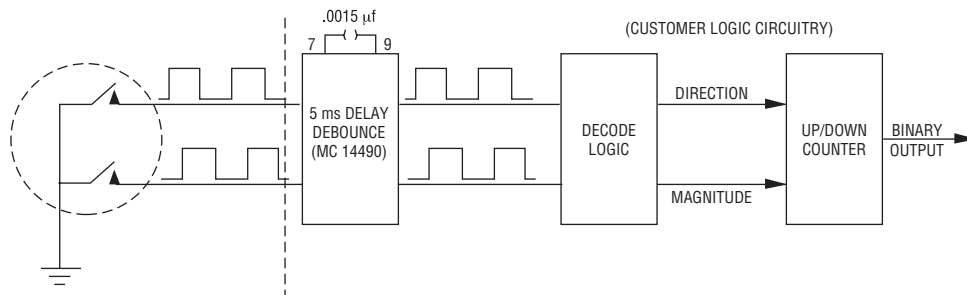
#### 1/4 CYCLE PER DETENT



#### FULL CYCLE PER DETENT (Normally Open in Detent Shown)



### RECOMMENDED INCREMENTAL CONTROL DIAGRAM FOR USE WITH A DEBOUNCE CIRCUIT



\*RoHS Directive 2002/95/EC Jan 27, 2003 including Annex.

Specifications are subject to change without notice.

Customers should verify actual device performance in their specific applications

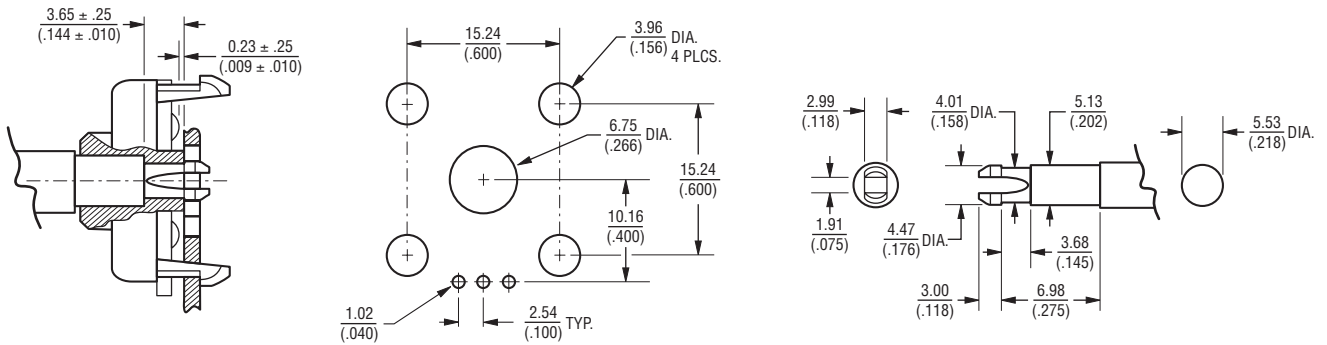
# ES Series - Shaftless Contacting Encoders

**BOURNS®**

## Product Dimensions



## Mounting Dimensions



DIMENSIONS:  $\frac{\text{MM}}{\text{(INCHES)}}$

# ES Series - Shaftless Contacting Encoders

**BOURNS®**

## How To Order

