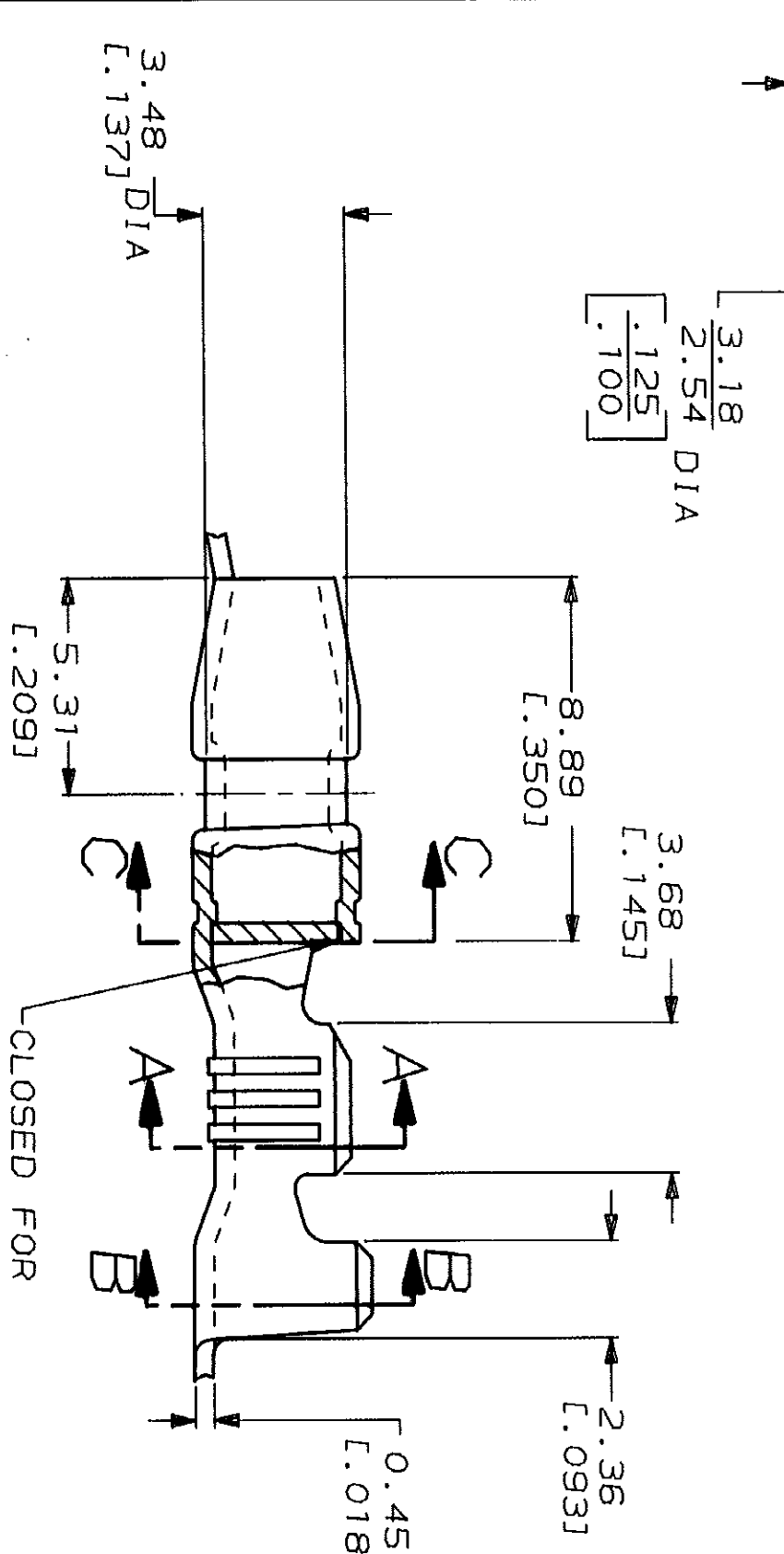
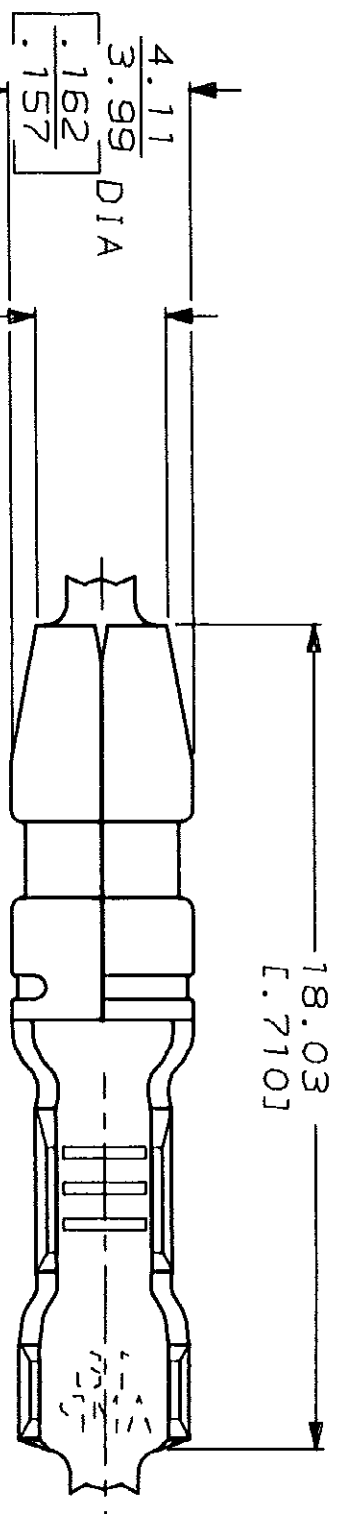


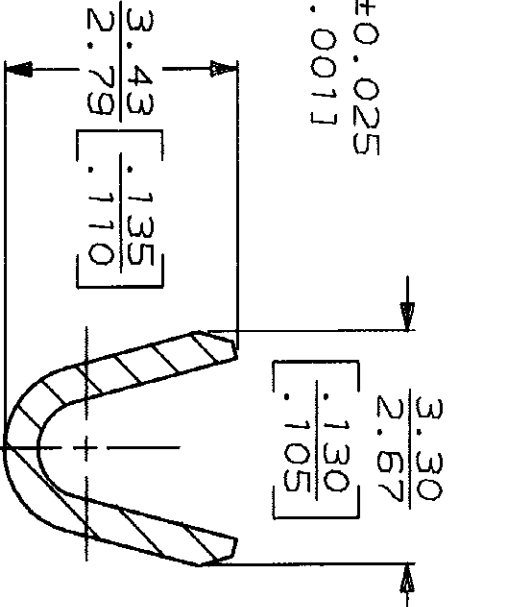
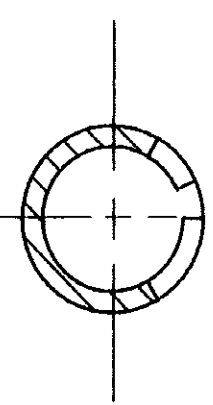
THIS DRAWING IS UNPUBLISHED. RELEASED FOR PUBLICATION BY AMP INCORPORATED. ALL INTERNATIONAL RIGHTS RESERVED. © COPYRIGHT 19

LOC	DIST	F	ZONE	LTR	DESCRIPTION	DATE	APPD
AF	50			H	REDRAWN PER AF-6810	7/26/90	PF/JR

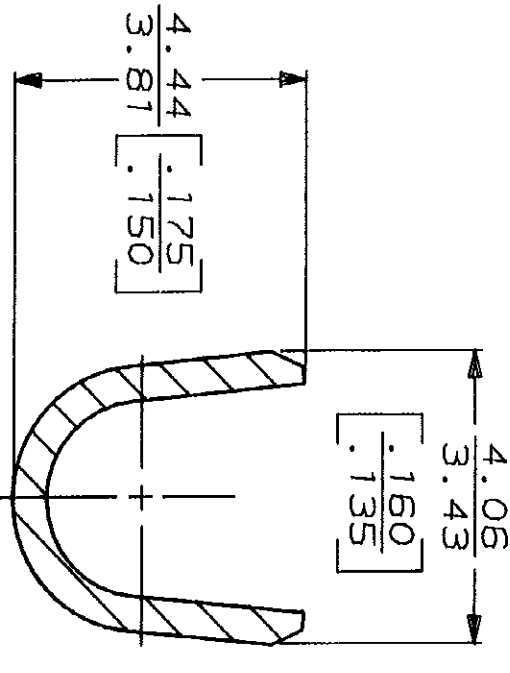
REVISIONS		DATE	APPD
		7/26/90	PF/JR



CLOSED FOR MOLDING PURPOSES



SECTION A-A
SCALE 10:1



SECTION B-B
SCALE 10:1

SECTION C-C

1 CONTINUOUS STRIP ON REELS

METRIC

TYPE	WIDTH	STRIP LENGTH	TYPE	WIDTH	HEIGHT	WIRE
F or 0	3.56 [140]	5.33 [210]	F	2.29 [090]	1.68 [065] 1.50 [059] 1.42 [056]	1.3mm [16] 0.8mm [18] 0.5mm [20]
INSUL BARREL CRIMP			WIRE BARREL CRIMP			

DO NOT SCALE PRINT. UNLESS SPECIFIED DIMENSIONS IN MILLIMETERS (INCHES) TOLERANCES ON: 1 PLC DEC ± 0.25 (1.010) 2 PLC DEC ± 0.25 (1.010) 3 PLC DEC ± 0.25 (1.010) ANGLES ±	DR 7/26/90 P FORNEY	AMP	AMP Incorporated Harrisburg, PA 17105-3608
MATERIAL #1 HARD BRASS	CHK 7/26/90 JR RUTH	NAME	
FINISH 0.003302 [.000130] MAX PRE-TIN PL PER MIL-T-10727	APPD 7/26/90 G VETTER	SHUR PLUG, 3.96 [.156] DIA	
INSULATION RANGE 2.41-2.92 DIA [.095-.115]	APPD 7/26/90 R KUDO	WIRE RANGE 0.5mm ² -1.3mm ² [20-16] AWG	PART NO 61388-1
APPLICATION SPEC	PRODUCT SPEC	SCALE 6:1	SHEET 1 OF 1
WEIGHT		CAGE CODE 00779	DRAWING NO 61388

CUSTOMER DRAWING