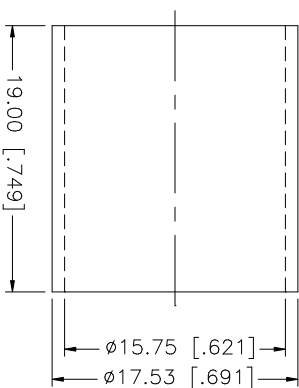
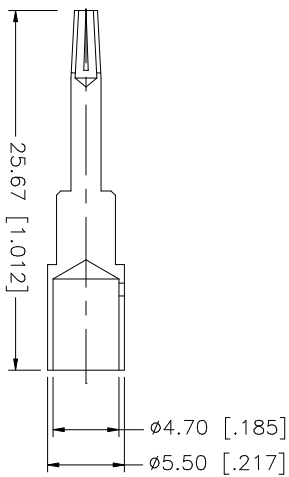
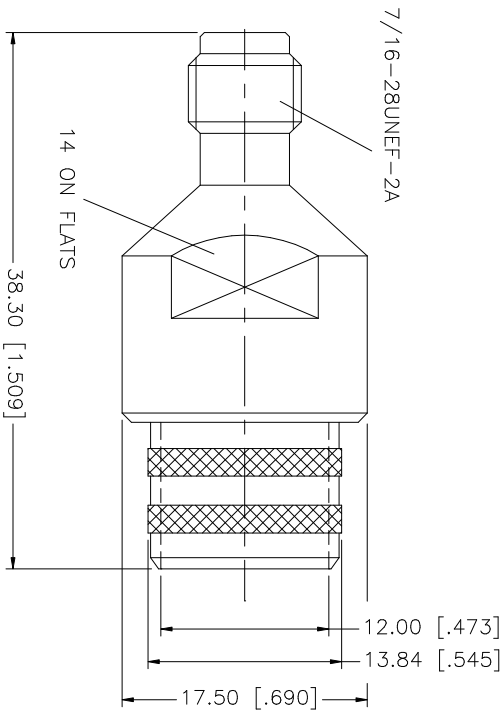
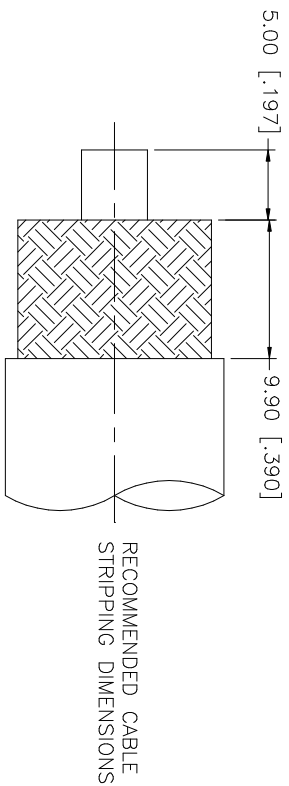


REV.	DATE	DESCRIPTION
A	06/15/99	MODIFY DESCRIPTION
B	05/09/06	MODIFY CONNECTOR BODY
C	05/09/06	UPDATE DRAWING FORMAT, ADD CRIMP NOTES



- NOTE:
1. USE CONNEX CRIMP HANDLE #47-4009-20 W/DIE #47-4009-01 TO CRIMP FERRULE.
  2. SOLDER CENTER CONTACT.

**Amphenol Connex**

TNC CRIMP JACK  
(LMR 600 CABLE)

UNLESS OTHERWISE SPECIFIED DIMENSIONS ARE INCHES AND FOR CUSTOMER REFERENCE ONLY. TOLERANCES FOR MILLIMETERS ARE:	APPROVALS	DATE	PART DESCRIPTION
0.5 - 8mm ± 0.20mm	DRAWN G.R.S.	06/01/06	TNC CRIMP JACK (LMR 600 CABLE)
8 - 30mm ± 0.40mm	CHECKED		
30 - 120mm ± 0.50mm	ISSUED		
	SHEET 1 OF 1		
UNLESS OTHERWISE SPECIFIED DIMENSIONS FOR INCHES ARE:	CAD FILE		PART NO.
.020 - .315 ± 0.007"	C:\122\122418.DWG		122418
.315 - 1.180 ± 0.015"			DWG NO. 122418.DWG
1.180 - 4.724 ± 0.020"			REV. C
DO NOT SCALE DRAWING			SIZE A
			SCALE NA
DESCRIPTION	MATERIAL	FINISH	QTY
1 BODY	BRASS	NICKEL	1
2 INSULATOR	TEFLON	NATURAL	1
3 CONTACT PIN	BRASS	GOLD	1
4 FERRULE	BRASS	NICKEL	1
5			
6			
7			
8			