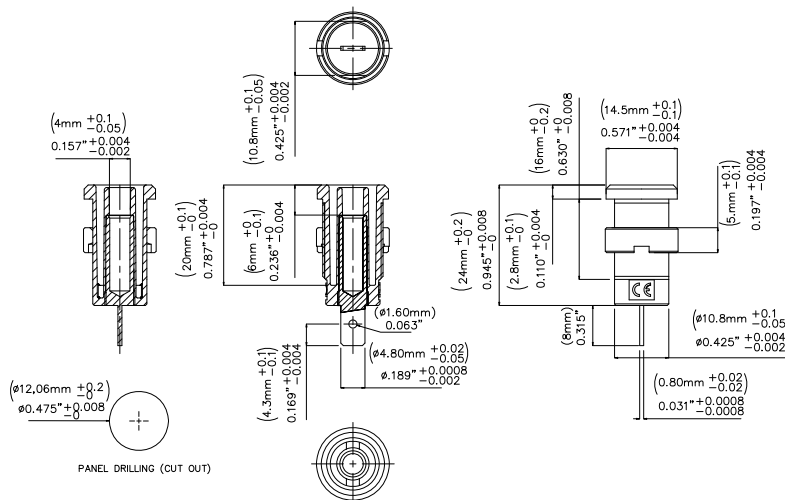


Model 72913

Panel Mt IEC61010 4mm (0.16in) Jack for Sheathed Banana Plugs



Model 72913
Panel Mount IEC61010 4mm (0.16in) Jack for
Sheathed Banana Plugs



Features

- Panel Mt. IEC61010 4mm (0.16in) Jack for Sheathed Banana Plugs.
- Solder Tab.

Materials

- Body: Polyamide
- Nut: Nickel-plated
- Solder Tab: Gold-plated Nickel Brass

Specifications

Max Current	36A
Max Voltage	1000 V CAT III
Max Resistance	Less than 5 mΩ

Ordering Information

Model: 72913-*

* = Color; Sold in packages of 10 pieces.
Available colors: Black (-0), Red (-2)

USA: Sales: 800-490-2361
Technical Support: technicalsupport@pomonatest.com
Fax: 425-446-5844
Europe: 31-(0) 40 2675 150 **International:** 425-446-5500
Where to Buy: www.pomonaelectronics.com

All dimensions are in inches. Tolerances (except noted): .xx = $\pm 0.02''$ (.51 mm), .xxx = $\pm 0.005''$ (.127 mm). All specifications are to the latest revisions. Specifications are subject to change without notice. Registered trademarks are the property of their respective companies.