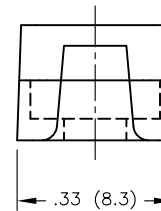
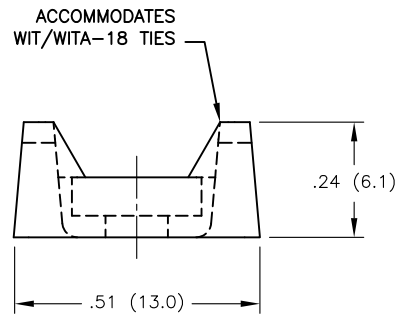
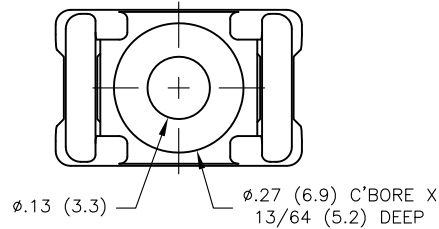


MOUNTING RIVETS FOR THE FTH-28RS		
RIVET NO.	PANEL THICKNESS RANGE	MOUNTING HOLE DIA.
SR-3035	UP TO .034 (0.9)	.122-.126 (3.1-3.2)
SR-3045	.034-.073 (0.9-1.9)	
SR-3055	.073-.113 (1.9-2.9)	
SR-3065	.113-.152 (2.9-3.9)	
SR-3075	.152-.191 (3.9-4.9)	
SR-3080	.172-.211 (4.4-5.4)	
SR-3090	.211-.250 (5.4-6.4)	
SR-3100	.250-.290 (6.4-7.4)	

#4 (M3) SCREW TYPES FOR THE FTH-28RS TRUSS, PAN, BINDING, OR ROUND HEAD
--



NOTES:

- MATERIAL: NYLON 6/6 UL94 V-2 (RMS-01).  
-NYLON 6/6 UL94 V-0 (RMS-19) AVAILABLE  
BY SPECIAL ORDER. TO ORDER REPLACE "-01" WITH "-19".  
-UV STABILIZED NYLON (RMS-46), COLOR BLACK, AVAILABLE  
BY SPECIAL ORDER ONLY. TO ORDER REPLACE "-01" WITH "-UVB"
- COLOR: NATURAL.
- TIE HOLDER TO ACCEPT EITHER A 3XXX SERIES RIVET OR A #4 (M3) SCREW.

F SEE CO 200570 FOR CHANGES SK 08.04.10			TITLE: FLAT TIE HOLDER			DWG IN IN (MM)		FINAL		PRINT TYPE	
E SEE CO 200446 FOR CHANGES SK 09.24.09			FILE # FTH-28RS			DWN: R.D.G.		APP:		PART #	
D SEE ECN #1124 FOR CHANGES SK 01.24.06			TOLERANCES UNLESS NOTED			DT: 05/16/01		DT:		FTH-28RS-01	
C UPDATED TABLE RG 02.12.02			.XX=±.010			RE: RICHCO, INC.		RICHCO INC.		CA	
B .33 WAS .316 RG 09.26.01			.XXX=±.005			PO BOX 804238, CHICAGO, 60680		(773) 539-4060			
A RELEASED FOR PRODUCTION RG 09.26.01			FRAC=±1/64								
REV DESCRIPTION ENGR DATE			ANG=±1'								