

4

3

2

1

THIS DRAWING IS UNPUBLISHED.

RELEASED FOR PUBLICATION

© COPYRIGHT

ALL RIGHTS RESERVED.

LOC DIST


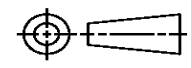
REVISIONS

P	LTR	DESCRIPTION	DATE	DWN	APVD
	B1	ECR-16-009824	28JUL2016	GK	SD

# REPLACED BY OCEAN STYLE APPLICATOR PART NUMBER 2836294-1

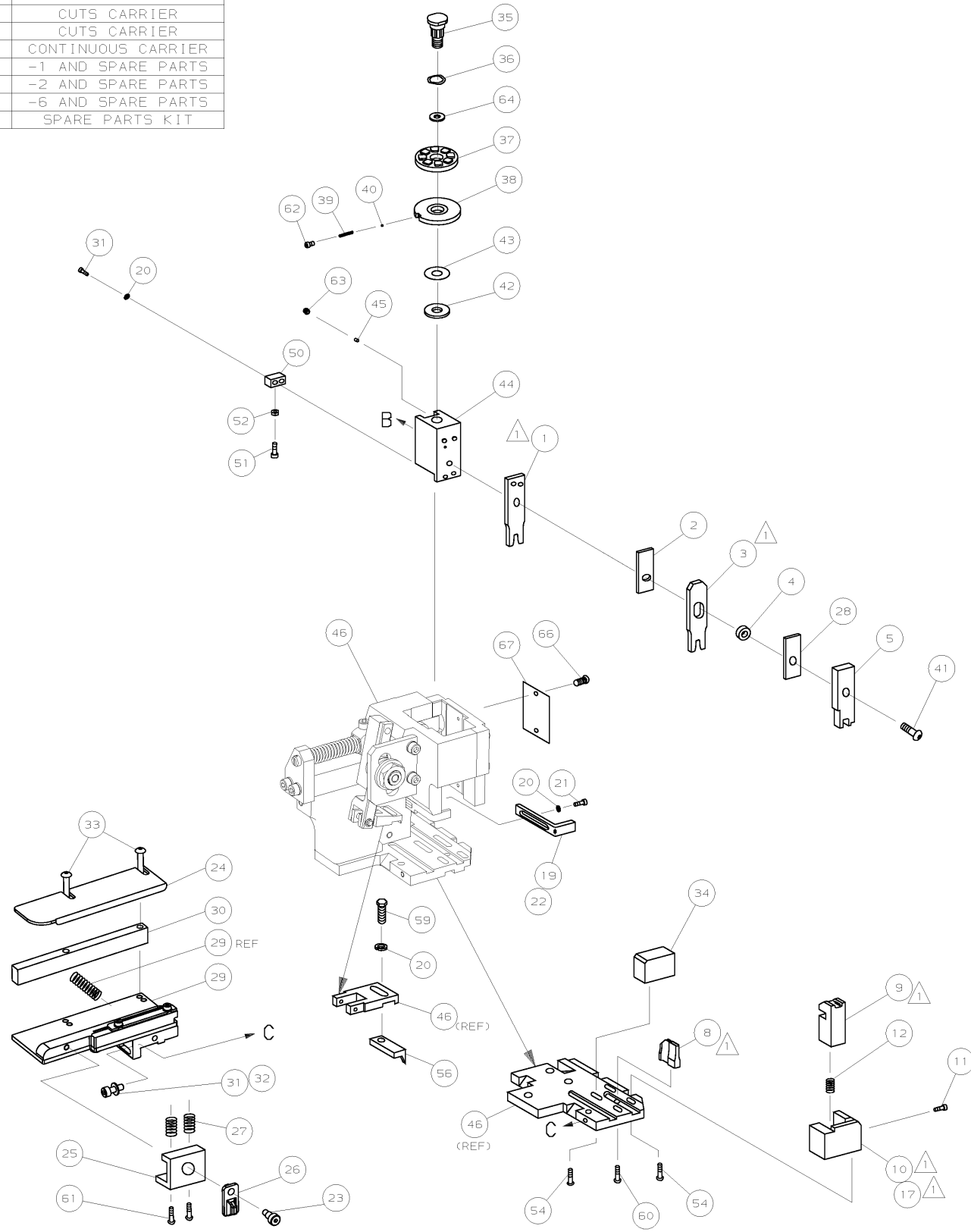
FOR REPLACEMENT PARTS FOR APPLICATOR 1426326  
REFER TO ADDITIONAL PAGE(S). SPARE PARTS KIT (IF LISTED)  
WILL REMAIN AVAILABLE.

THE REPLACEMENT OCEAN STYLE APPLICATOR HAS THE  
SAME TERMINATOR/PRESS INTERFACE AS APPLICATOR  
1426326

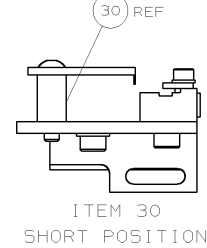
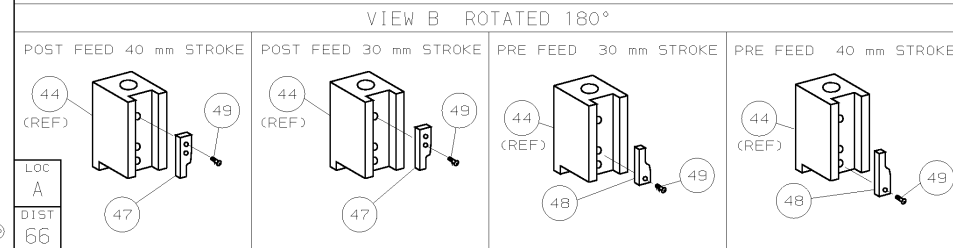
THIS DRAWING IS A CONTROLLED DOCUMENT.		DWN	GOPALAKRISHNA HV		 TE Connectivity
DIMENSIONS:		CHK	GOPALAKRISHNA HV		
		TOLERANCES UNLESS OTHERWISE SPECIFIED:		APVD	NAME
		0 PLC ±		STOUGH DALE	SIDE FEED HD-I APPLICATOR
		1 PLC ±		PRODUCT SPEC	
		2 PLC ±		APPLICATION SPEC	SIZE
		3 PLC ±		WEIGHT	CAGE CODE
		4 PLC ±			DRAWING NO
		ANGLES ±			RESTRICTED TO
MATERIAL		FINISH			A3      ©- 1426326
CUSTOMER DRAWING				SCALE	SHEET 1 OF 2 REV B1

PART NUMBER	REV	FIRST USED	TERMINATOR	FEED TYPE	DESCRIPTION
1426326-1	B	-	LEADMAKER	MECH POST FEED	CUTS CARRIER
1426326-2	B	-	BENCH	MECH PRE FEED	CUTS CARRIER
1426326-6	B	-	LEADMAKER	MECH POST FEED	CONTINUOUS CARRIER
7-1426326-1	B	-	LEADMAKER	MECH POST FEED	-1 AND SPARE PARTS
7-1426326-2	B	-	BENCH	MECH PRE FEED	-2 AND SPARE PARTS
7-1426326-6	B	-	LEADMAKER	MECH POST FEED	-6 AND SPARE PARTS
7-1426326-7	A	-	-	-	SPARE PARTS KIT

CRIMP DATA AMP TERMINAL AMP CRIMP SPECS			
TERMINAL NAME: TAB, FASTON, .110 SERIES			
CRIMP	SIZE	TYPE	RANGE
WIRE	2.54 [.100 IN]	F	22-18 AWG
INSUL	4.06 [.160 IN]	F	1.78-3.30 [.070-.130 IN]
WIRE STRIP LENGTH		APPL INSTRUCTION	
3.90-4.70 [.154-.185 IN]		408-8322	
TERMINAL		FEED	
APPL SPEC 114-3118		12.20 [.480 IN]	
TERMINALS APPLIED			
63138	-	-	-
-	-	-	-
-	-	-	-
-	-	-	-
-	-	-	-
-	-	-	-
-	-	-	-
-	-	-	-
-	-	-	-
WIRE SIZE	CRIMP HEIGHT	PIN PN AND LENGTH [IN]	
mm <sup>2</sup> AWG			
18 AWG	1.47 ±0.05 [.058 ±.002 IN]	1-354779-0 [.3040]	
20 AWG	1.37 ±0.05 [.054 ±.002 IN]	1-354779-8 [.3080]	
22 AWG	1.32 ±0.05 [.052 ±.002 IN]	2-354779-3 [.3105]	



- 1. RECOMMENDED SPARE PARTS.
- 2. GREASE RAM, CAM, CAM FOLLOWER AND FEED ROD LIGHTLY.
- 3. LUBRICATE DAILY PER THE APPLICATOR INSTRUCTION SHEET SUPPLIED WITH THE APPLICATOR.



QTY	REQD	PER	ASSY	PART NO	DESCRIPTION	ITEM NO		
-	1	1	1	1	1	1426326	PRINT, APPLICATOR LOG SHEET	73
-	1	1	1	1	1	1338705-1	DOCUMENTATION PACKAGE	72
-	-	-	-	-	-	-	-	71
-	-	-	-	-	-	-	-	70
-	-	-	-	-	-	-	-	69
-	-	-	-	-	-	-	-	68
-	1	1	1	1	1	461264-1	PLATE, IDENTIFICATION	67
-	2	2	2	2	2	21017-2	SCR,DRIVE (#2X.19) ID PLATE	66
-	-	-	-	-	-	-	-	65
-	1	1	1	1	1	986950-1	WASHER, FLAT PRECISION	64
-	1	1	1	1	1	3-18031-0	SCR,SKT SET (M6X6) RAM	63
-	1	1	1	1	1	18023-9	SCR,SHC (M4X6) INS DISC	62
-	2	2	2	2	2	1-18024-5	SCR,BHC (M5X25) DRAG	61
-	1	1	1	1	1	18024-7	SCR,BHC (M4X10) ANVIL	60
-	1	1	1	1	1	5-18022-2	SCR,HEX (M4X8) FEED FINGER	59
-	-	-	-	-	-	-	-	58
-	-	-	-	-	-	-	-	57
-	1	1	1	1	1	1338685-1	PAWL, FEED	56
-	-	-	-	-	-	-	-	55
-	4	4	4	4	4	18024-8	SCR,BHC (M4X12) SHEAR HOLDER	54
-	-	-	-	-	-	-	-	53
-	1	1	1	1	1	18030-1	NUT, HEX (M3) HOLD DOWN	52
-	1	1	1	1	1	811242-5	BUMPER, HOLDDOWN	51
-	1	1	1	1	1	690753-2	SPACER, TONKER	50
-	1	1	1	1	1	18024-3	SCR,BHC (M3X10) CAM	49
-	-	-	-	-	-	-	-	48
-	1	1	1	1	1	1338675-1	CAM, PRE FEED 30 & 40 mm ST	48
-	1	1	1	1	1	1338676-1	CAM, POST FEED 30 & 40 mm ST	47
-	1	1	1	1	1	1320999-3	APPLICATOR BASIC SUBASSY	46
-	1	1	1	1	1	690191-1	PLUG, NYLON	45
-	1	1	1	1	1	1338660-1	RAM	44
-	1	1	1	1	1	690125-1	WASHER, LAMINATED	43
-	1	1	1	1	1	690124-1	WASHER, RAM	42
-	1	1	1	1	1	2-18024-6	SCR,BHC (M8X25) RAM	41
-	1	1	1	1	1	23241-1	BALL, STEEL	40
-	1	1	1	1	1	2-22278-7	SPRING, COMPRESSION	39
-	1	1	1	1	1	1320922-1	DISC, INSULATION	38
-	1	1	1	1	1	354777-1	WIRE DISC, PLASTIC	37
-	1	1	1	1	1	22480-5	WASHER, SPRING	36
-	1	1	1	1	1	690212-1	POST, RAM	35
-	1	1	1	1	1	1320934-1	SUPPORT, TERMINAL	34
-	2	2	2	2	2	1-18024-0	SCR,BHC (M4X20) STRIP GUIDE	33
-	1	1	1	1	1	18027-2	WASHER, FLAT (M4)	32
-	3	3	3	3	3	1-18023-2	SCR,SKT CAP (M4X12) MOUNT BLOCK	31
-	1	1	1	1	1	1320908-8	SPACER, STRIP GUIDE	30
-	1	1	1	1	1	1633073-1	STRIP GUIDE PLATE ASSY	29
-	1	1	1	1	1	1-455888-5	SPACER, FRONT SHEAR DEP	28
-	2	2	2	2	2	1-22284-0	SPRING, DRAG	27
-	1	1	1	1	1	356835-1	LEVER, DRAG RELEASE	26
-	1	1	1	1	1	240792-1	DRAG, TERMINAL	25
-	1	1	1	1	1	1320928-1	PLATE, STRIP GUIDE	24
-	1	1	1	1	1	980371-4	SCR,SHC SHLD	23
-	1	1	1	1	1	690472-2	STRIPPER	22
-	1	1	1	1	1	1-18023-1	SCR,SHC (M4X10) STRIPPER	21
-	4	4	4	4	4	18025-2	WASHER, LOCK (M4) STRIPPER	20
-	-	-	-	-	-	-	-	19
-	1	1	1	1	1	690472-1	STRIPPER	18
-	-	-	-	-	-	-	-	17
-	1	1	1	1	1	1338684-1	HOLDER, SHEAR, FRONT (NO-CUT)	16
-	-	-	-	-	-	-	-	15
-	-	-	-	-	-	-	-	14
-	-	-	-	-	-	-	-	13
-	1	1	1	1	1	5-22280-0	SPRING, SHEAR	12
-	1	1	1	1	1	356885-4	STOP, SHEAR	11
-	-	-	-	-	-	-	-	10
-	1	1	1	1	1	1320921-1	HOLDER, SHEAR, FRONT (CUT)	10
-	1	1	1	1	1	454276-1	SHEAR, FLOAT (FRONT)	9
-	1	2	2	2	2	2-1333206-0	ANVIL	8
-	-	-	-	-	-	-	-	7
-	-	-	-	-	-	-	-	6
-	1	1	1	1	1	3-455889-6	DEPRESSOR, SHEAR (FRONT)	5
-	1	1	1	1	1	238011-2	SPACER, BLOCK CRIMPER	4
-	1	2	2	2	2	8-683453-1	CRIMPER, INSULATION	3
-	1	1	1	1	1	455888-5	SPACER, CRIMPER	2
-	1	2	2	2	2	456407-8	CRIMPER, WIRE	1

QTY REQD PER ASSY

REVISION OF EACH ASSY NO (WHEN BLANK, USE DWG REVISION)

PARTS LIST

DIMENSIONS: mm [INCHES]

DO NOT SCALE PRINT.

TOLERANCES UNLESS OTHERWISE SPECIFIED:

1. PLC DEC ±

2. PLC DEC ±

3. PLC DEC ±

ANGLES ±

SURF TEXTURE, REMOVE BURRS, BREAK SHARP EDGES RO.38 MAX

DR: M. CLIFFORD

APP: 25APR02

REL: 23-05-02

CHK: -

REL: M. CLIFFORD

AMP Incorporated

Harrisburg, PA 17105-3608

NAME: SIDE FEED HD-I APPLICATOR

SCALE: -

DWG NO: 1426326

SHEET 1 OF 1

REV B

CUSTOMER AND ASSEMBLY DRAWING

THIS DRAWING IS A CONTROLLED DOCUMENT

LAYOUT L1426326 SET UP GAGE 458637-3

2002 RELEASED FOR PUBLICATION BY AMP INCORPORATED. ALL RIGHTS RESERVED. AMP 1756 REV 3-92