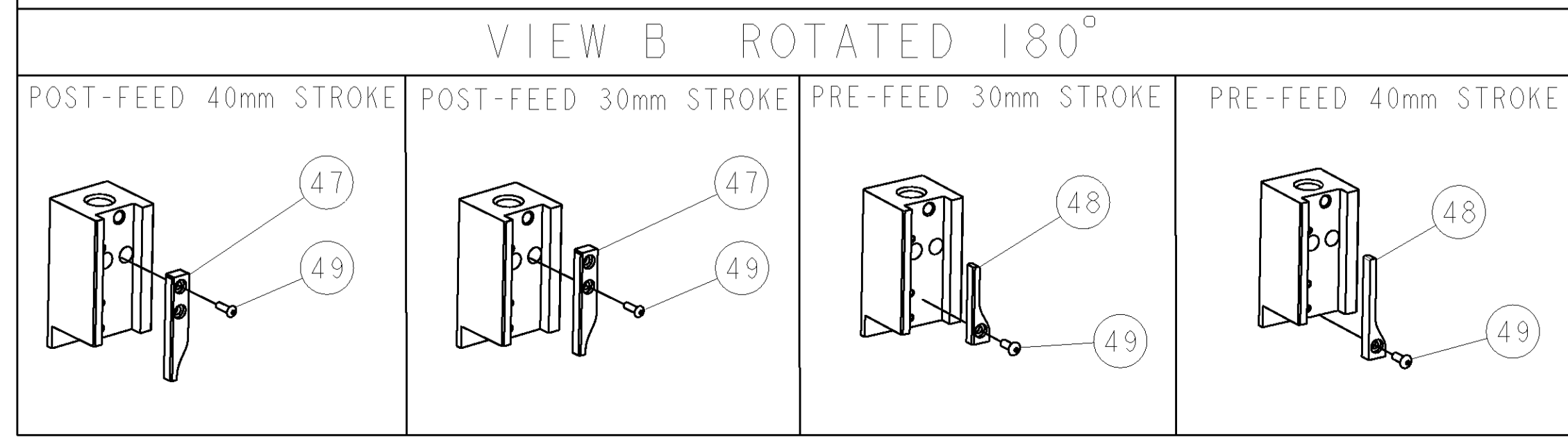
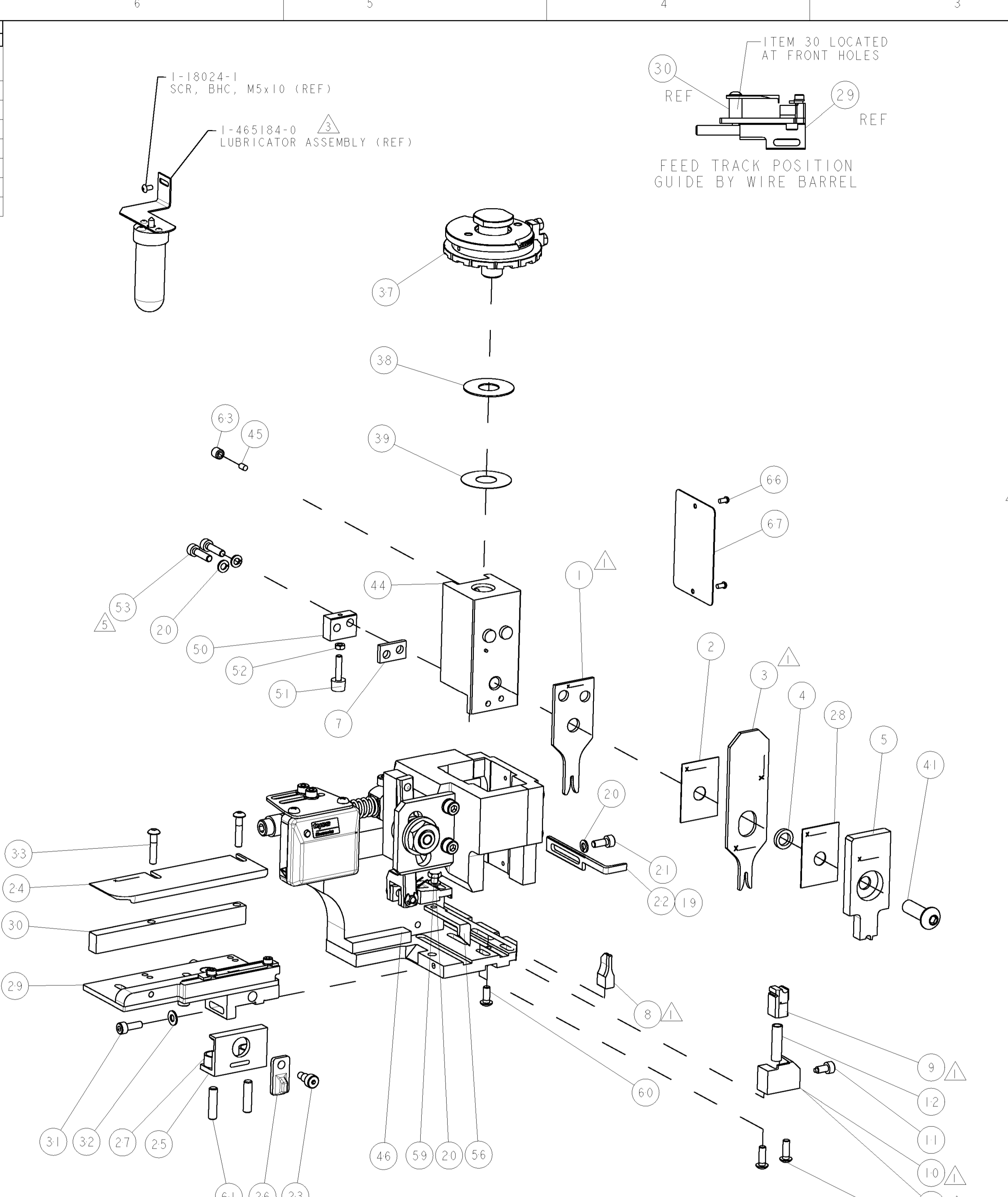


PART NUMBER	REV	TERMINATOR	FEED TYPE	DESCRIPTION
1528651-1	A	LEADMAKER	MECH POST FEED	CUTS CARRIER
1528651-2	A	BENCH	MECH PRE FEED	CUTS CARRIER
1528651-6	A	LEADMAKER	MECH POST FEED	CONTINUOUS CARRIER
7-1528651-1	A	LEADMAKER	MECH POST FEED	-1 AND SPARE PARTS
7-1528651-2	A	BENCH	MECH PRE FEED	-2 AND SPARE PARTS
7-1528651-6	A	LEADMAKER	MECH POST FEED	-6 AND SPARE PARTS
7-1528651-7	A	-	-	SPARE PARTS KIT

CRIMP DATA	AMPHENOL TERMINAL	AMPHENOL CRIMP SPEC	
TERMINAL NAME: C 091 CRIMP CONTACTS			
CRIMP	SIZE	TYPE	
WIRE	1.57 [0.062 IN]	F	
INSUL	2.03 [0.080 IN]	O	
RANGE			
0.14-0.50mm ² or 26-20 AWG			
2.00 MAX [0.079 MAX]			
WIRE STRIP LENGTH			
2.54-3.33 [1.00-1.31 IN]			
APPL INSTRUCTIONS			
408-8322 & 408-8490			
TERMINAL APPL SPEC	FEED 9.10 [0.358 IN]		
TERMINALS APPLIED			
TYCO PN	MANUF'S PN	TYCO PN	MANUF'S PN
PIN		SOCKET	
1572539-1	ZN01 015 0005 (1)	1572540-1	ZN02 015 0005 (1)
1572539-2	ZN01 015 0005 (2)	1572540-2	ZN02 015 0005 (2)
1572539-5	ZN01 015 0046 (2)	1572540-5	TN02 015 0046 (1)
1572539-6	TN01 015 0046 (1)	1572540-6	TN02 015 0046 (2)
1572539-7	TN01 015 0046 (2)	1572540-7	ZN02 015 0046 (1)
1572539-8	ZN01 015 0046 (1)	1572540-8	ZN02 015 0046 (2)
WIRE SIZE	CRIMP HEIGHT	REF SETTING	
0.50mm ² or 20 AWG	1.03 ± 0.05 [0.041 ± 0.002 IN]	B3	
0.25mm ²	1.00 ± 0.05 [0.039 ± 0.002 IN]	B5	
22 AWG	0.98 ± 0.05 [0.039 ± 0.002 IN]	B6	
24 AWG	0.97 ± 0.05 [0.038 ± 0.002 IN]	B8	
0.14mm ²	0.96 ± 0.05 [0.038 ± 0.002 IN]	B8	
26 AWG	0.95 ± 0.05 [0.037 ± 0.002 IN]	B9	

- △ RECOMMENDED SPARE PARTS.
- 2. GREASE RAM, CAM, CAM FOLLOWER AND FEED ROD LIGHTLY.
- △ CERTAIN TERMINALS REQUIRE LUBRICATION. REFER TO THE APPLICATOR INSTRUCTION SHEET FOR MORE INFORMATION.
- 4. LUBRICATE DAILY PER THE APPLICATOR INSTRUCTION SHEET SUPPLIED WITH THE APPLICATOR.
- △ ITEM 53, CUT TO LENGTH AT ASSEMBLY.
- △ CRIMP HEIGHTS PROVIDED BY AMPHENOL. ALL OTHER CRIMP DATA CALCULATED BY TYCO ELECTRONICS UK LTD.
- △ MINIMUM TENSILE VALUES APPLY:
 20 AWG = 84N 0.50mm = 73N
 22 AWG = 53N 0.25mm = 42N
 24 AWG = 39N 0.14mm or 26 AWG = 24N



-77	-76	-72	-71	-6	-2	-1	PART NO	DESCRIPTION	ITEM NO
-	-	-	-	-	-	-	-	-	84
-	-	-	-	-	-	-	-	-	83
-	-	-	-	-	-	-	-	-	82
-	-	-	-	-	-	-	-	-	81
-	-	-	-	-	-	-	-	-	80
-	-	-	-	-	-	-	-	-	79
-	-	-	-	-	-	-	-	-	78
-	-	-	-	-	-	-	-	-	77
-	-	-	-	-	-	-	-	-	76
-	-	-	-	-	-	-	-	-	75
-	-	-	-	-	-	-	-	-	74

SET UP GAGE 458637-3		LOC	DIST	REVISONS			
A	66	P	LTR	DESCRIPTION	DATE	DN	APVD
		A		SEE ECO-06-013326	06JUN2006	DP	MC

-	-	-	-	-	-	-	-	-	73
-	-	-	-	-	-	-	-	-	72
-	-	-	-	-	-	-	-	-	71
-	-	-	-	-	-	-	-	-	70
-	-	-	-	-	-	-	-	-	69
-	-	-	-	-	-	-	-	-	68
-	-	-	-	-	-	-	-	-	67
-	-	-	-	-	-	-	-	-	66
-	-	-	-	-	-	-	-	-	65
-	-	-	-	-	-	-	-	-	64
-	-	-	-	-	-	-	-	-	63
-	-	-	-	-	-	-	-	-	62
-	-	-	-	-	-	-	-	-	61
-	-	-	-	-	-	-	-	-	60
-	-	-	-	-	-	-	-	-	59
-	-	-	-	-	-	-	-	-	58
-	-	-	-	-	-	-	-	-	57
-	-	-	-	-	-	-	-	-	56
-	-	-	-	-	-	-	-	-	55
-	-	-	-	-	-	-	-	-	54
-	-	-	-	-	-	-	-	-	53
-	-	-	-	-	-	-	-	-	52
-	-	-	-	-	-	-	-	-	51
-	-	-	-	-	-	-	-	-	50
-	-	-	-	-	-	-	-	-	49
-	-	-	-	-	-	-	-	-	48
-	-	-	-	-	-	-	-	-	47
-	-	-	-	-	-	-	-	-	46
-	-	-	-	-	-	-	-	-	45
-	-	-	-	-	-	-	-	-	44
-	-	-	-	-	-	-	-	-	43
-	-	-	-	-	-	-	-	-	42
-	-	-	-	-	-	-	-	-	41
-	-	-	-	-	-	-	-	-	40
-	-	-	-	-	-	-	-	-	39
-	-	-	-	-	-	-	-	-	38
-	-	-	-	-	-	-	-	-	37
-	-	-	-	-	-	-	-	-	36
-	-	-	-	-	-	-	-	-	35
-	-	-	-	-	-	-	-	-	34
-	-	-	-	-	-	-	-	-	33
-	-	-	-	-	-	-	-	-	32
-	-	-	-	-	-	-	-	-	31
-	-	-	-	-	-	-	-	-	30
-	-	-	-	-	-	-	-	-	29
-	-	-	-	-	-	-	-	-	28
-	-	-	-	-	-	-	-	-	27
-	-	-	-	-	-	-	-	-	26
-	-	-	-	-	-	-	-	-	25
-	-	-	-	-	-	-	-	-	24
-	-	-	-	-	-	-	-	-	23
-	-	-	-	-	-	-	-	-	22
-	-	-	-	-	-	-	-	-	21
-	-	-	-	-	-	-	-	-	20
-	-	-	-	-	-	-	-	-	19
-	-	-	-	-	-	-	-	-	18
-	-	-	-	-	-	-	-	-	17
-	-	-	-	-	-	-	-	-	16
-	-	-	-	-	-	-	-	-	15
-	-	-	-	-	-	-	-	-	14
-	-	-	-	-	-	-	-	-	13
-	-	-	-	-	-	-	-	-	12
-	-	-	-	-	-	-	-	-	11
-	-	-	-	-	-	-	-	-	10
-	-	-	-	-	-	-	-	-	9
-	-	-	-	-	-	-	-	-	8
-	-	-	-	-	-	-	-	-	7
-	-	-	-	-	-	-	-	-	6
-	-	-	-	-	-	-	-	-	5
-	-	-	-	-	-	-	-	-	4
-	-	-	-	-	-	-	-	-	3
-	-	-	-	-	-	-	-	-	2
-	-	-	-	-	-	-	-	-	1

TYCO	DESCRIPTION	ITEM NO
1338705-3	DOCUMENTATION PACKAGE	71
461264-5	PLATE, IDENTIFICATION	67
21017-2	SCREW, DRIVE	66
3-18031-0	SCR, SET, CUP POINT M6 X 6.0	63
2-18032-5	SCR, SET, FLT POINT M5 X 20.0	61
18024-7	SCR, BTN SKT HD CAP (M4 X 10.0)	60
5-18022-2	SCR, HEX HD CAP M4 X 8.0	59
1338685-1	PAWL, FEED	56
18024-8	SCR, BTN SKT HD CAP (M4 X 12.0)	54
1-18023-3	SCR, SKT HD CAP M4 X 16.0	53
18030-1	NUT, HEX, REG M3	52
811242-5	BUMPER, HOLD DOWN	51
690753-2	SPACER, TONKER	50
18024-3	SCR, BTN SKT HD CAP (M3 X 10.0)	49
1338675-1	CAM, UNIVERSAL PRE FEED	48
1338676-1	CAM, UNIVERSAL POST-FEED	47
1320999-3	APPLICATOR SUBASSEMBLY, HDI	46
690191-1	PLUG, NYLON	45
1338660-1	RAM	44
2-18024-6	SCR, BTN SKT HD CAP (M8 X 25.0)	41
690125-1	SHIM SUB-ASSY	39
469367-8	SHIM	38
879103-3	DISC, ADJUSTABLE GEITNER	37
1-18024-0	SCR, BTN SKT HD CAP (M4 X 20.0)	33
18027-2	WASHER, FLAT, REG M4	32
1-18023-2	SCR, SKT HD CAP M4 X 12.0	31
1320908-4	SPACER, STRIP GUIDE	30
1633073-1	STRIP GUIDE ASSEMBLY	29
455888-5	SPACER, CRIMPER	28
1-22284-0	SPRING, COMPRESSION	27
356835-1	LEVER, DRAG RELEASE	26
240792-1	DRAG, TERMINAL	25
1320928-1	PLATE, STRIP GUIDE	24
980371-4	SCR, SKT HD SHLDR 5.0 DIA X 6.0	23
690472-2	STRIPPER	22
1-18023-1	SCR, SKT HD CAP M4 X 10.0	21
18025-2	WASHER, SPRG LOCK, REG M4	20
690472-1	STRIPPER	19
1338684-1	HOLDER, SHEAR, NO-CUT	17
3-22280-3	SPRING, COMPRESSION	12
356885-4	STOP, SHEAR	11
1320921-1	SHEAR HOLDER, FRONT, CUT	10
462006-2	FLOATING SHEAR, FRONT	9
6-1333202-8	ANVIL, COMBINATION	8
240641-2	SPACER	7
2-455889-0	DEPRESSOR, SHEAR	5
1-238011-0	BLOCK, CRIMPER SPACER	4
7-683454-8	CRIMPER, INSULATION O	3
455888-4	SPACER, CRIMPER	2
5-456403-3	CRIMPER, WIRE PREMIUM	1