

Table with columns: ATLANTIC VERSION TERMINATOR INTERFACE ADAPTER, PART NUMBER, REVISION, DESCRIPTION, FEED TYPE, CONVERT TO, PART NUMBERS REQUIRED. Includes an image of the terminator interface adapter.

Table: APPLICATOR DATA. Columns: CRIMP, SIZE, TYPE. Rows: WIRE (2.03 mm), INSUL (4.06 mm).

Table: TERMINAL DATA: HULANE TERMINAL TE CRIMP SPECIFICATION. Includes wire strip length and insulation diameter range.

Table: TERMINALS APPLIED. Columns: TE TERMINAL, HULANE TERMINAL, TE SEAL, FANGYUAN SEAL, CABLE DIAMETER.

Table: WIRE SIZE, CRIMP HEIGHT, CRIMP HEIGHT REFERENCE SETTING. Columns: WIRE SIZE, CRIMP HEIGHT mm [INCH], CRIMP HEIGHT REFERENCE SETTING.

- RECOMMENDED SPARE PARTS
GREASE BEARING SURFACES LIGHTLY
LUBRICATE DAILY PER THE APPLICATOR INSTRUCTION SHEET SUPPLIED WITH THE APPLICATOR.
APPLICATOR SPECIFIC DATA TO BE ENTERED INTO BLANK MEMORY CHIP AT ASSEMBLY...

\*WARNING
ON INSTALLATION, SET WIRE DISC, ITEM 40 TO LARGEST WIRE SIZE SETTING. USE OF SETTINGS BELOW MINIMUM REQUIRED CRIMP HEIGHT SETTING WILL CAUSE DAMAGE TO CRIMP TOOLING.

Table with columns: PART NO, DESCRIPTION, ITEM NO. Rows: 2119957-2 APPLICATOR SHIM PACK, 8-21084-0 O-RING...

ATLANTIC VERSION
Shown on sheets 1 of 4 & 2 of 4
(Pacific version shown on sheets 3 of 4 & 4 of 4)

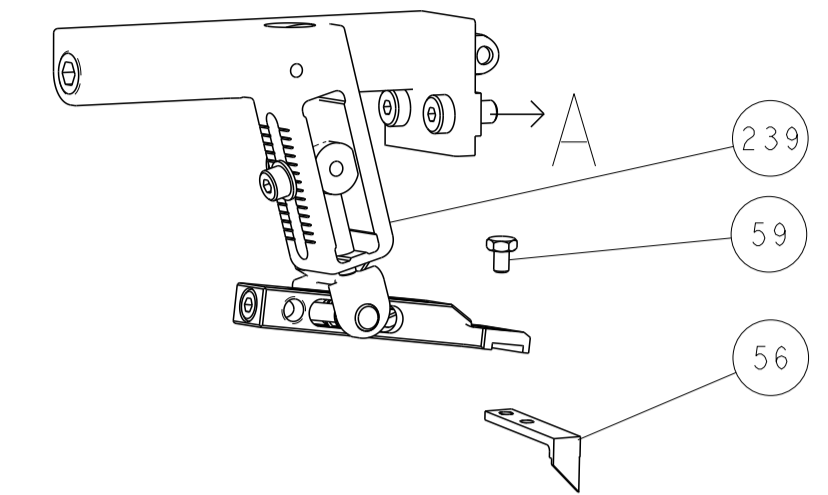
Table: REVISIONS. Columns: P, LTR, DESCRIPTION, DATE, DWN, APVD. Row: A, RELEASED, 23SEP2014, MR, GB.

Large table with columns: P, LTR, DESCRIPTION, DATE, DWN, APVD. Contains a detailed list of parts and their specifications.

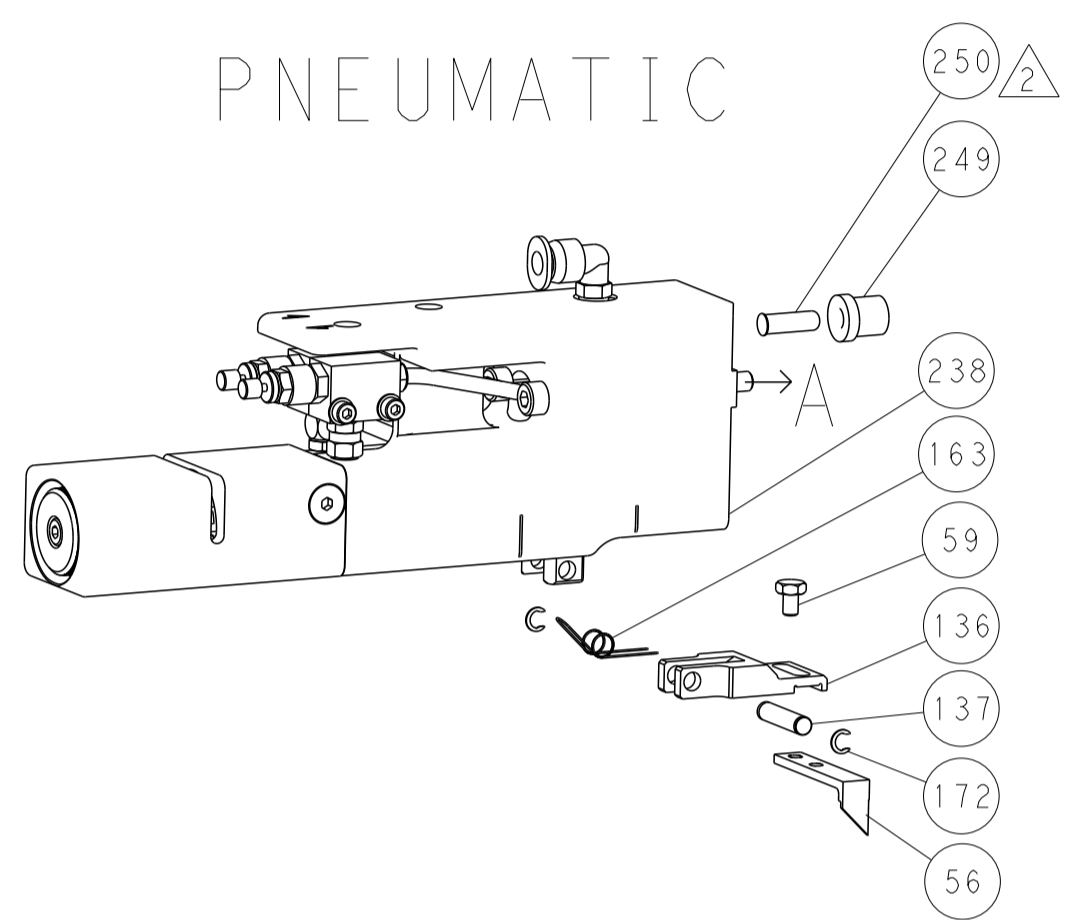
Table: DIMENSIONS, TOLERANCES UNLESS OTHERWISE SPECIFIED, MATERIAL, FINISH, WEIGHT, SCALE. Includes a drawing of a part and technical specifications.

REVISONS		DATE	DWN	APVD
LOC	DIST			
A	66			
P	LYN	DESCRIPTION		
-	-	SEE SHEET 1	-	-

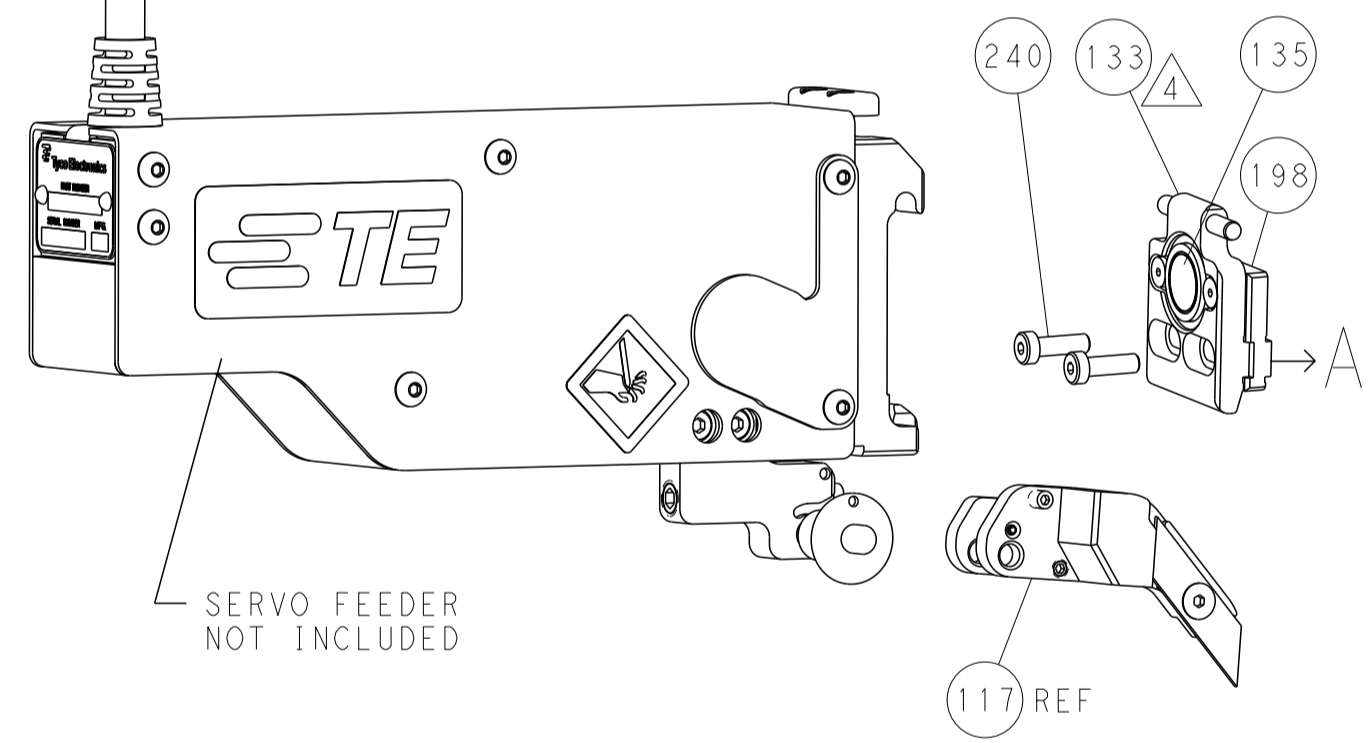
### FEED TYPE MECHANICAL



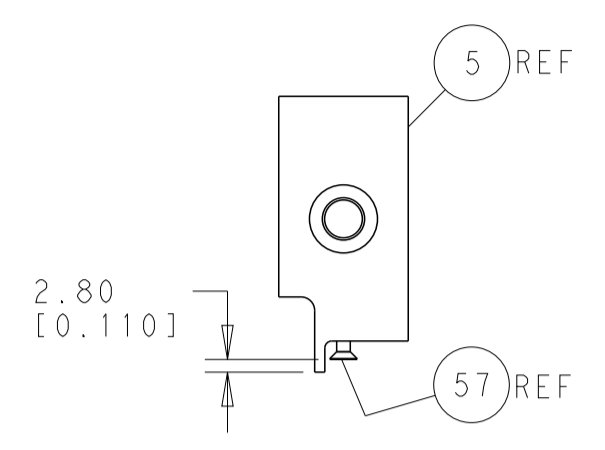
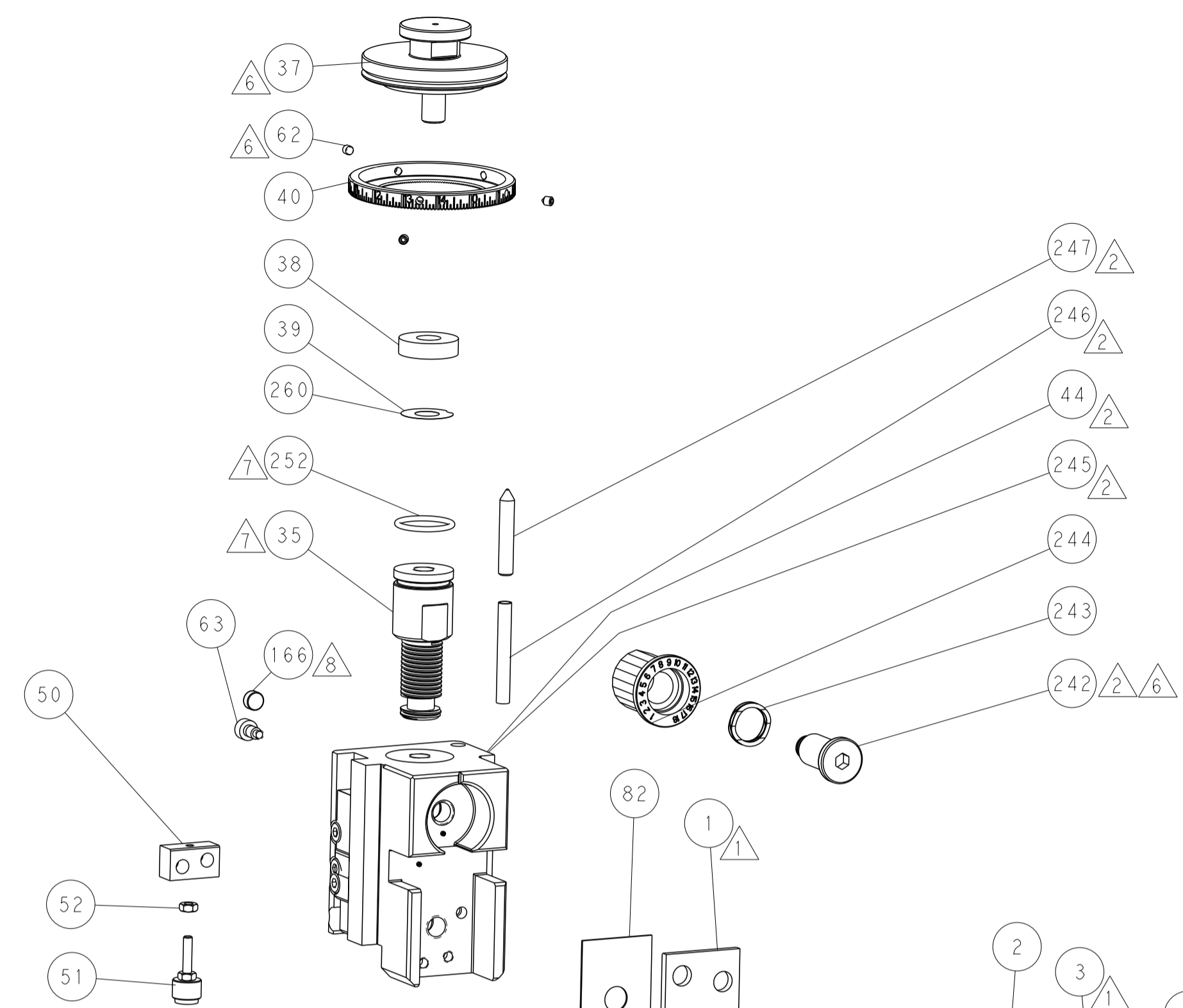
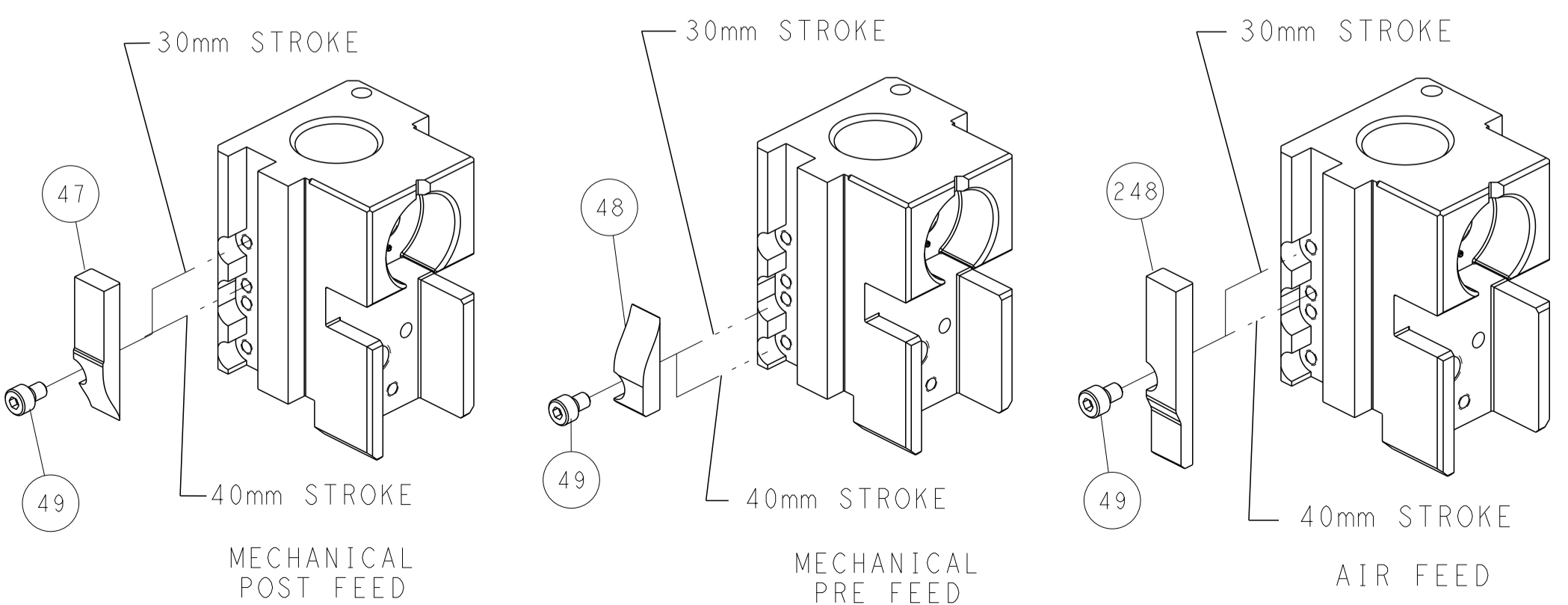
### PNEUMATIC



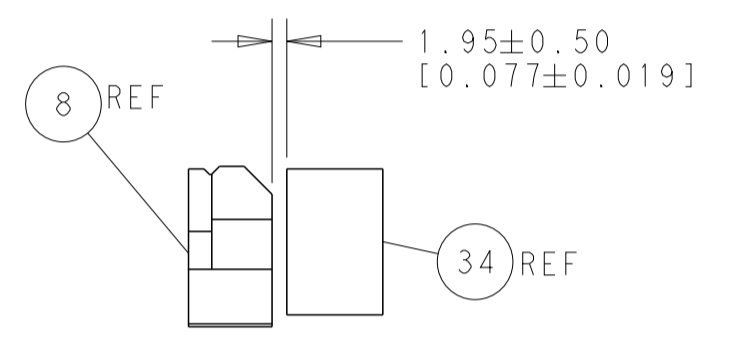
### SERVO LATCH PLATE



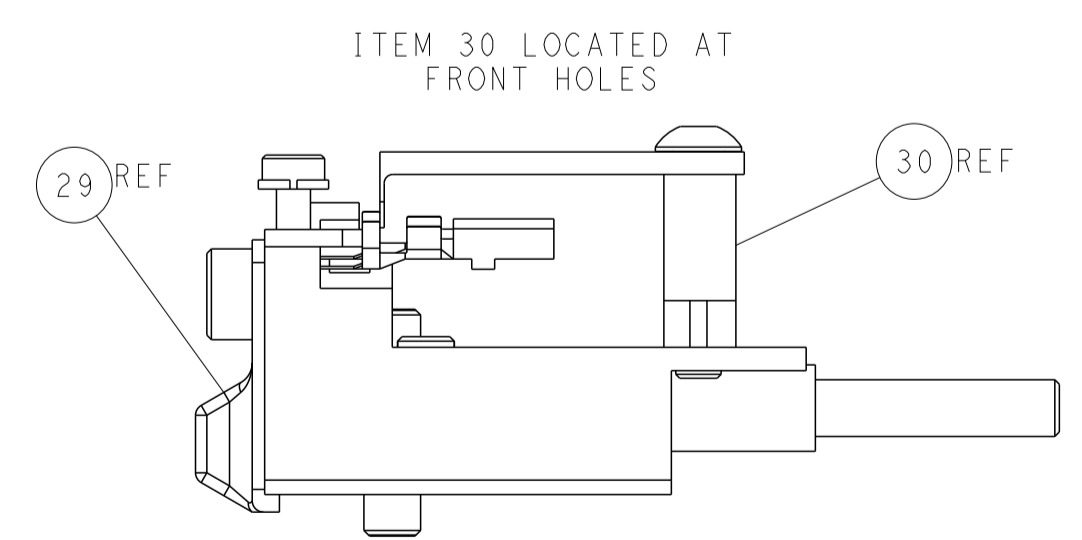
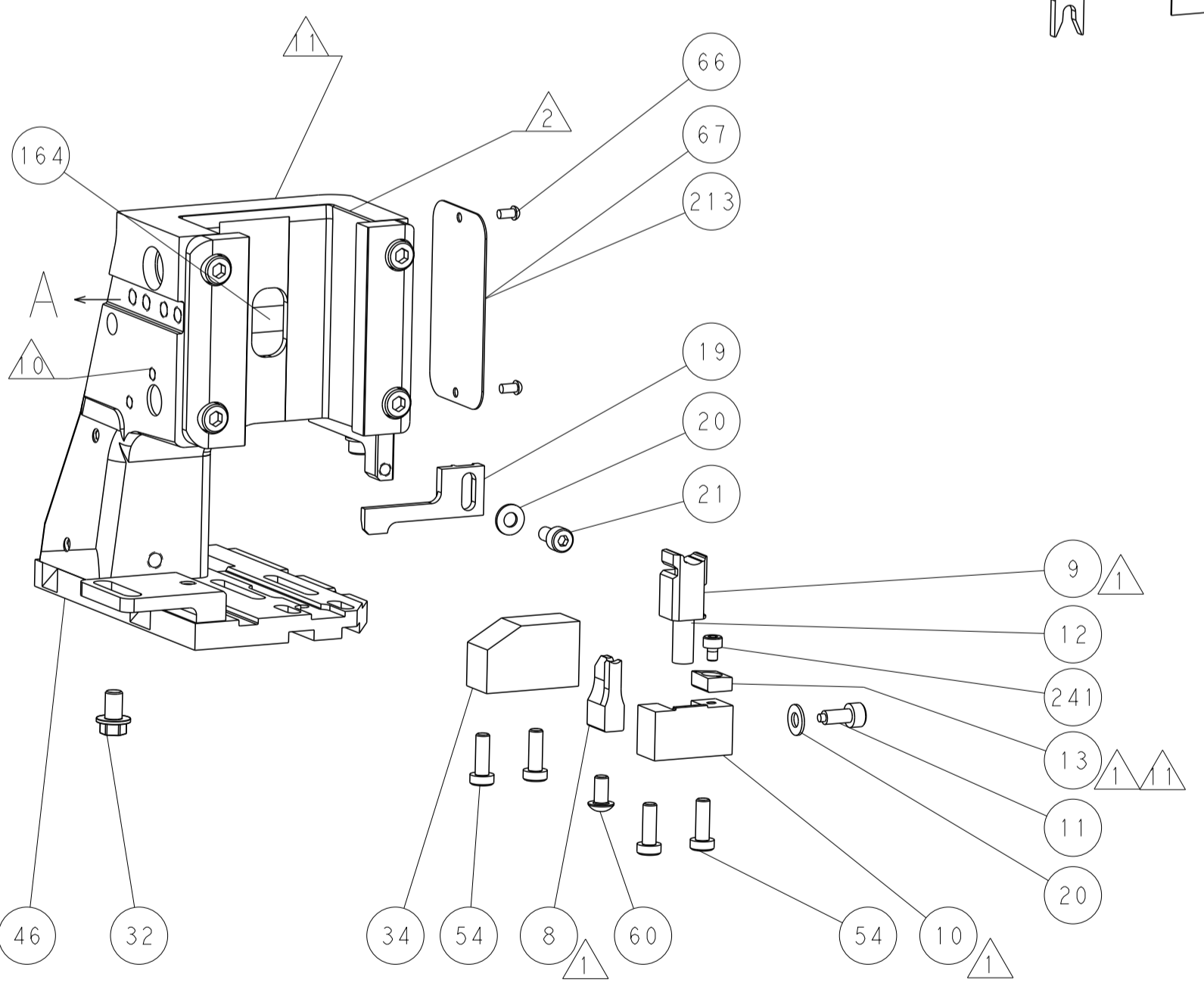
### CAM POSITIONS



SHEAR DEPRESSOR DETAIL



TERMINAL SUPPORT LOCATION



FEED TRACK POSITION GUIDE BY INSULATION BARREL

**ATLANTIC VERSION**  
 Shown on sheets 1 of 4 & 2 of 4  
 (Pacific version shown on sheets 3 of 4 & 4 of 4)

DIMENSIONS:		TOLERANCES UNLESS OTHERWISE SPECIFIED:		DWN	09JUL2014	TE Connectivity Harrisburg, PA 17105-3608
mm	0 PLC ±0.5	1 PLC ±0.5	2 PLC ±0.13	CHK	09JUL2014	
	3 PLC ±0.013	4 PLC ±0.001	ANGLES ±0.0001	APVD	09JUL2014	NAME
MATERIAL:	FINISH:	WEIGHT:	SCALE:	Customer Accessible Production Drawing		RESTRICTED TO
			1:2	A1 00779 ©=2266413		SHEET 2 OF 4 REV A

APPLICATOR STYLE CONVERSION CHART. Table with columns: CONVERT TO, PART NUMBERS REQUIRED. Rows include PNEUMATIC FEED, SERVO LATCH PLATE, MECHANICAL FEED, SMART APPLICATOR, MECHANICAL FEED, SERVO LATCH PLATE, SMART APPLICATOR, MECHANICAL FEED, PNEUMATIC FEED.

APPLICATOR DATA. Table with columns: CRIMP, SIZE, TYPE. Rows include WIRE, INSUL, APPLICATOR INSTRUCTIONS.

TERMINAL DATA: HULANE TERMINAL TE CRIMP SPECIFICATION. Table with columns: TE TERMINAL, HULANE TERMINAL, TE SEAL, FANGYUAN SEAL, CABLE DIAMETER.

WIRE SIZE, CRIMP HEIGHT mm [INCH], CRIMP HEIGHT REFERENCE SETTING. Table with columns: WIRE SIZE, CRIMP HEIGHT mm [INCH], CRIMP HEIGHT REFERENCE SETTING.

- RECOMMENDED SPARE PARTS
GREASE BEARING SURFACES LIGHTLY
LUBRICATE DAILY PER THE APPLICATOR INSTRUCTION SHEET SUPPLIED WITH THE APPLICATOR.
APPLICATOR SPECIFIC DATA TO BE ENTERED INTO BLANK MEMORY CHIP AT ASSEMBLY.
ADJUSTMENT OF THE STRIPPER MAY BE REQUIRED WHEN MOVING THE APPLICATOR BETWEEN BENCH AND LEADMAKER APPLICATIONS.
APPLY PART NUMBER 1-23419-5 LOCTITE TO THREADS OF ITEM 62.
GREASE THREADS, GROOVE AND O-RING ON ITEMS 139 & 152.
MAGNET MUST BE ORIENTED CORRECTLY IN ORDER TO PROPERLY ACTUATE THE COUNTER.
CRIMP HEIGHT REFERENCE SETTING WAS THE SETTING USED WHEN THE APPLICATOR WAS QUALIFIED AT THE FACTORY.
SPARE FEED CAM STORAGE LOCATION REFER TO INSTRUCTION SHEET FOR ADDITIONAL INFORMATION.
TO CONVERT THE APPLICATOR TO A NON-CARRIER CUTTING STYLE, REMOVE ITEM 13 AND ATTACH TO THE LOCATION ON BACK SIDE OF THE HOUSING.
THIS APPLICATOR APPLIES TERMINAL WITH A SEAL.
APPLY TORQ-SEAL IN ALLEN SOCKET TO FILL HOLE AFTER FLAT HD HAS BEEN ADJUSTED TO CORRECT HEIGHT AT QUALIFICATION.

\*WARNING
ON INSTALLATION, SET WIRE DISC, ITEM 40 TO LARGEST WIRE SIZE SETTING. USE OF SETTINGS BELOW MINIMUM REQUIRED CRIMP HEIGHT SETTING WILL CAUSE DAMAGE TO CRIMP TOOLING.

PACIFIC VERSION
Shown on sheets 3 of 4 & 4 of 4
(Atlantic version shown on sheets 1 of 4 & 2 of 4)

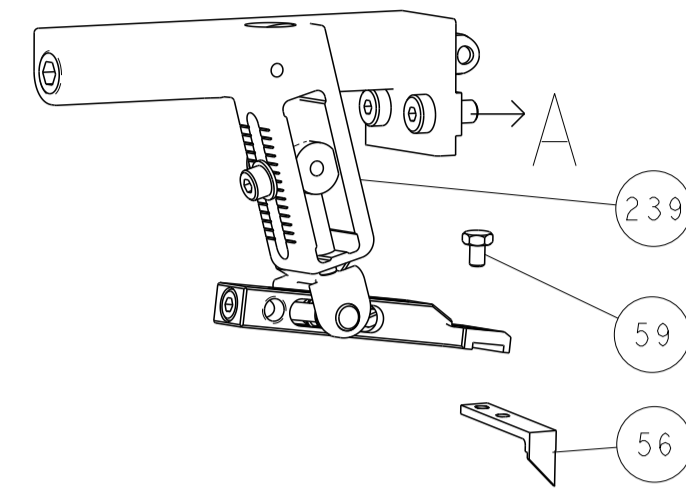
SET UP GAUGE, LOC, DIST, REVISIONS. Table with columns: P, LTM, DESCRIPTION, DATE, DWN, APVD.

Main parts list table with columns: P, LTM, DESCRIPTION, DATE, DWN, APVD. Includes parts like FINE ADJUST HEAD ASM, PUSH ROD, BUSHING, SPRING, CAM, WASHER, RETAINER, SCR, SHCS, MECHANICAL FEED ASSEMBLY, AIR FEED MODULE, TAG IDENTIFICATION, SPACER, FEEDER, RING, MAGNET, COUNTER, SPRING, O-RING, FEED CAM, DETENT PIN, SCR, BHSC, SHCS, FEED CAM, POST FEED, APPLICATOR BASIC ASSEMBLY, RAM, BOLT, PIN, HOLDER, MEMORY CHIP, SERVO FEED LATCH ASM, FEED FINGER ASSEMBLY, SPACER, CRIMPER, DOCUMENTATION PACKAGE, TAG IDENTIFICATION, SCREW, LIMITER, SCR, PAWL, SCR, NUT, BUMPER, SPACER, TONKER, SCR, FEED CAM, PRE FEED, SCR, DISC, APPLICATOR SHIM PACK, RAM WASHER, SUPPORT, SCR, HEX HEAD, SPACER STRIP GUIDE, ASSEMBLY STRIP GUIDE, SPACER CRIMPER, STRIP GUIDE, SCR, WASHER, STRIPPER, INSERT, SPRING, STOP, SHEAR, SHEAR HOLDER, FLOATING SHEAR, ANVIL, DEPRESSOR, BLOCK, CRIMPER SPACER, CRIMPER INSULATION, SPACER CRIMPER, CRIMPER WIRE PREMIUM.

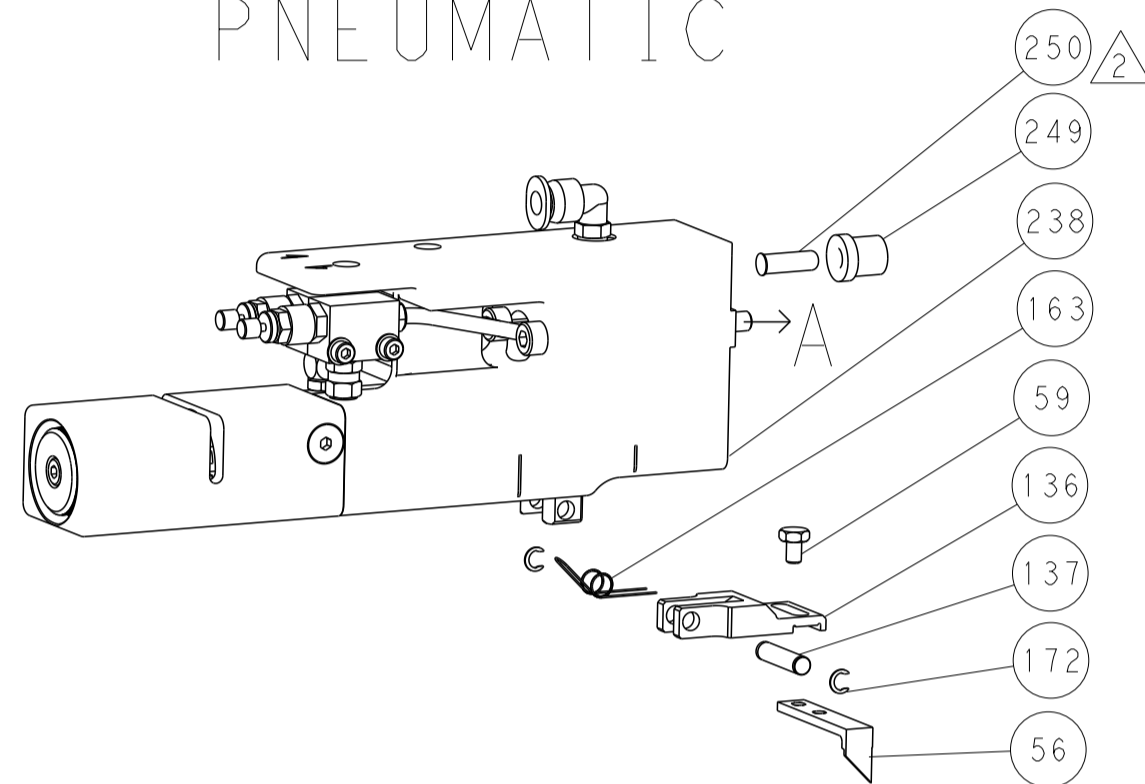
Customer Accessible Production Drawing. Table with columns: DIMENSIONS, TOLERANCES, MATERIAL, FINISH, WEIGHT, SCALE, SHEET, REV.

LOC		DIST		REVISIONS			
A	66	P	LTM	DESCRIPTION	DATE	OWN	APVD
		-		SEE SHEET 1			

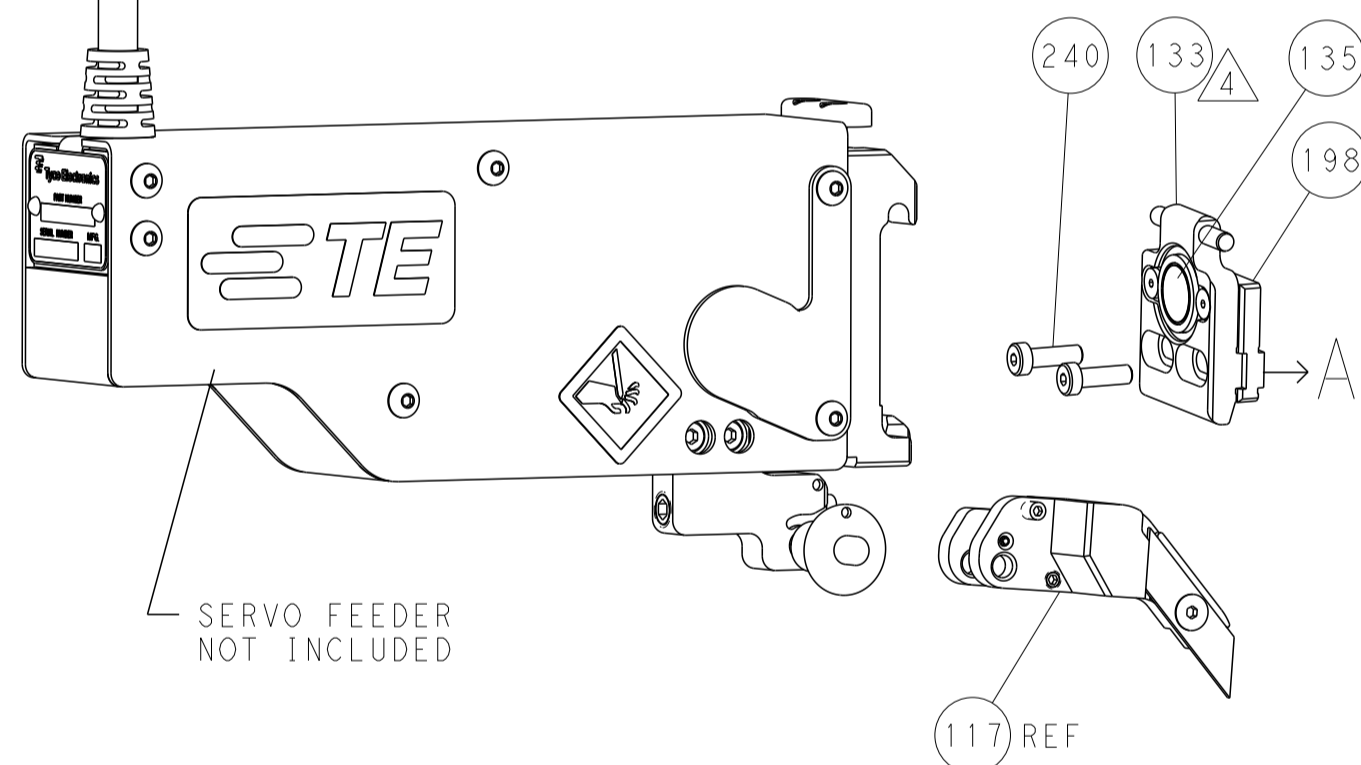
# FEED TYPE MECHANICAL



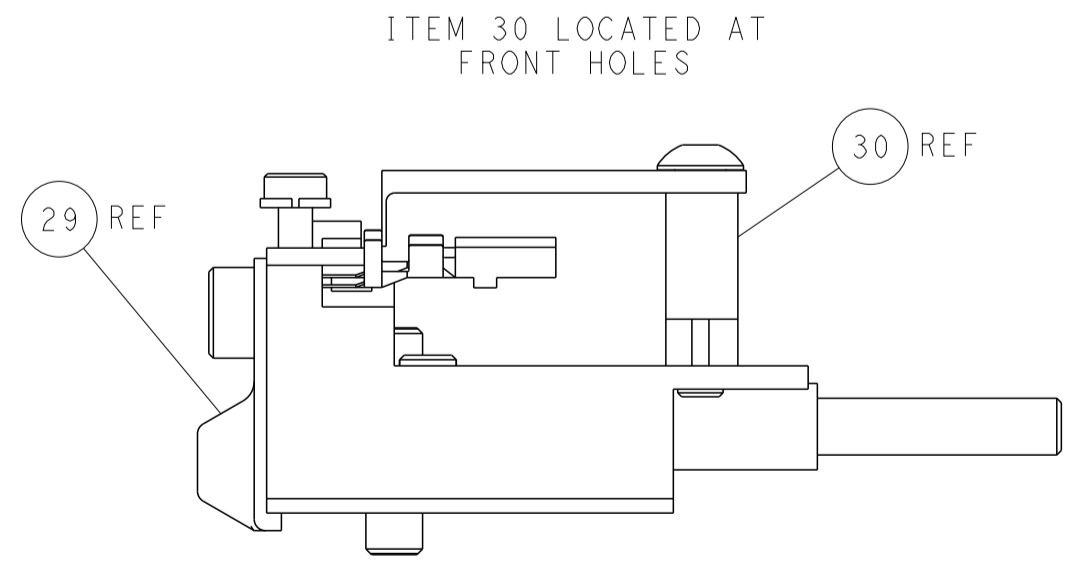
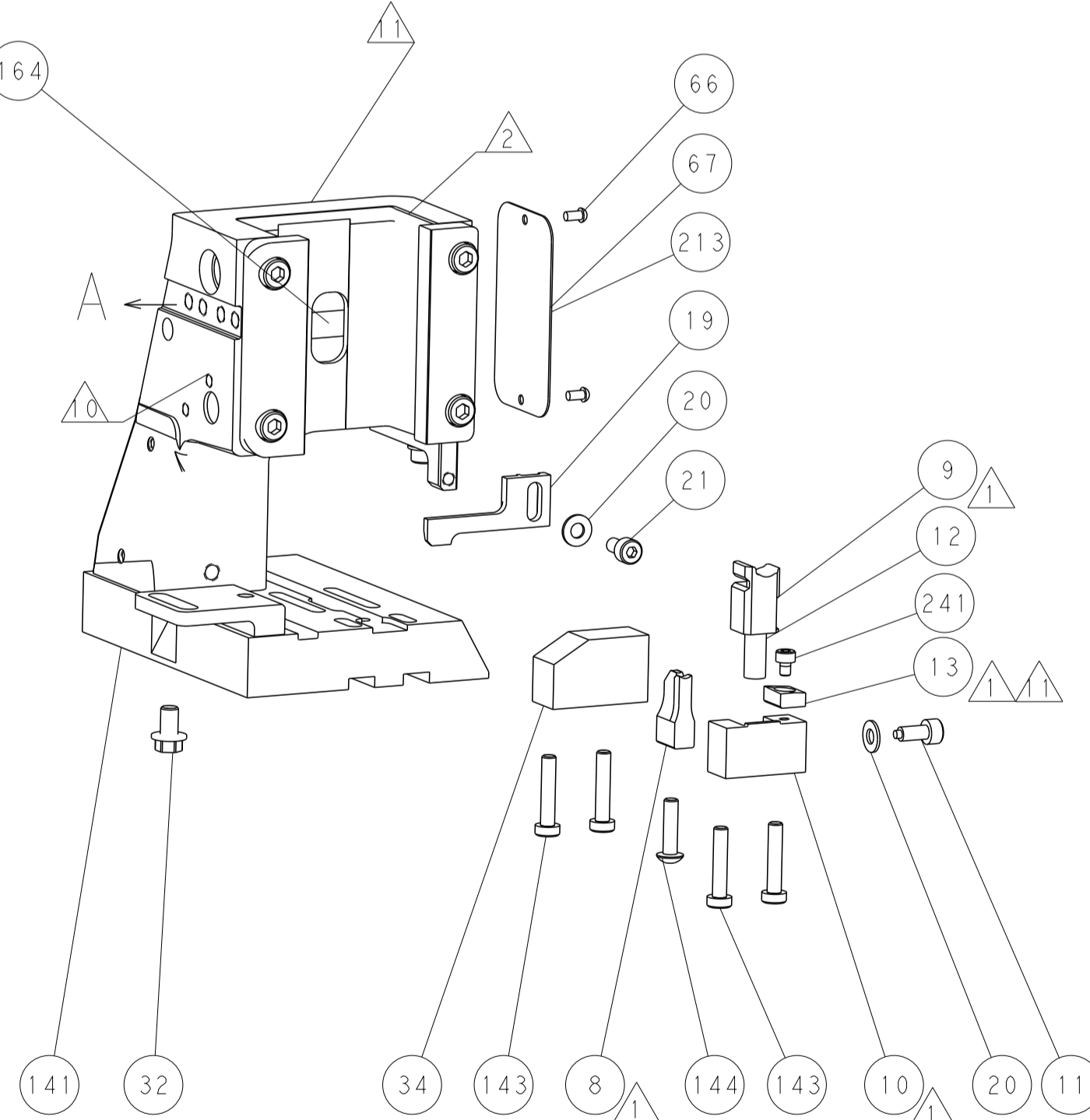
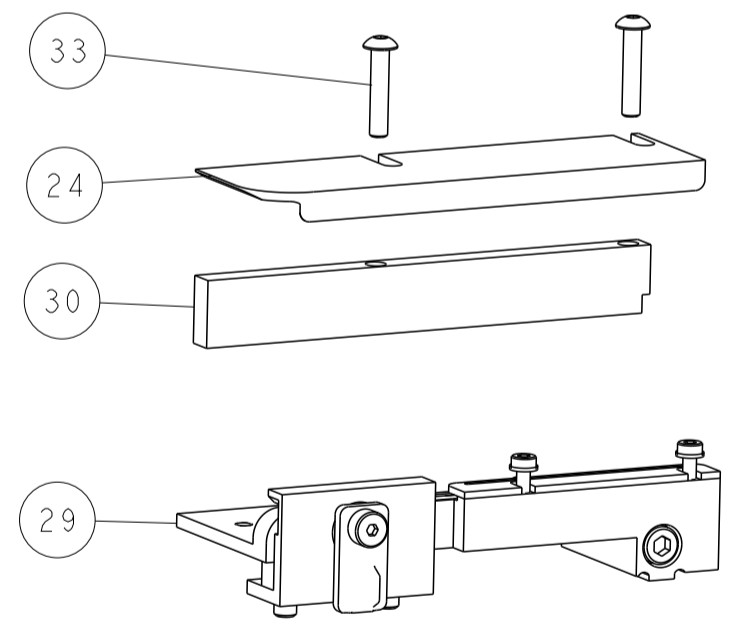
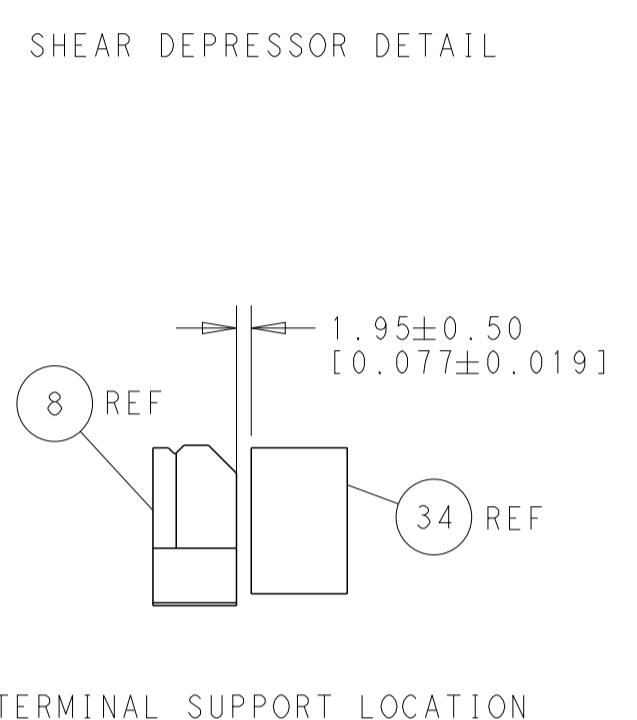
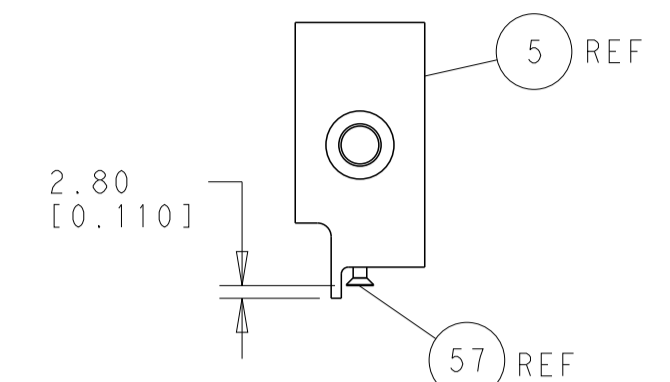
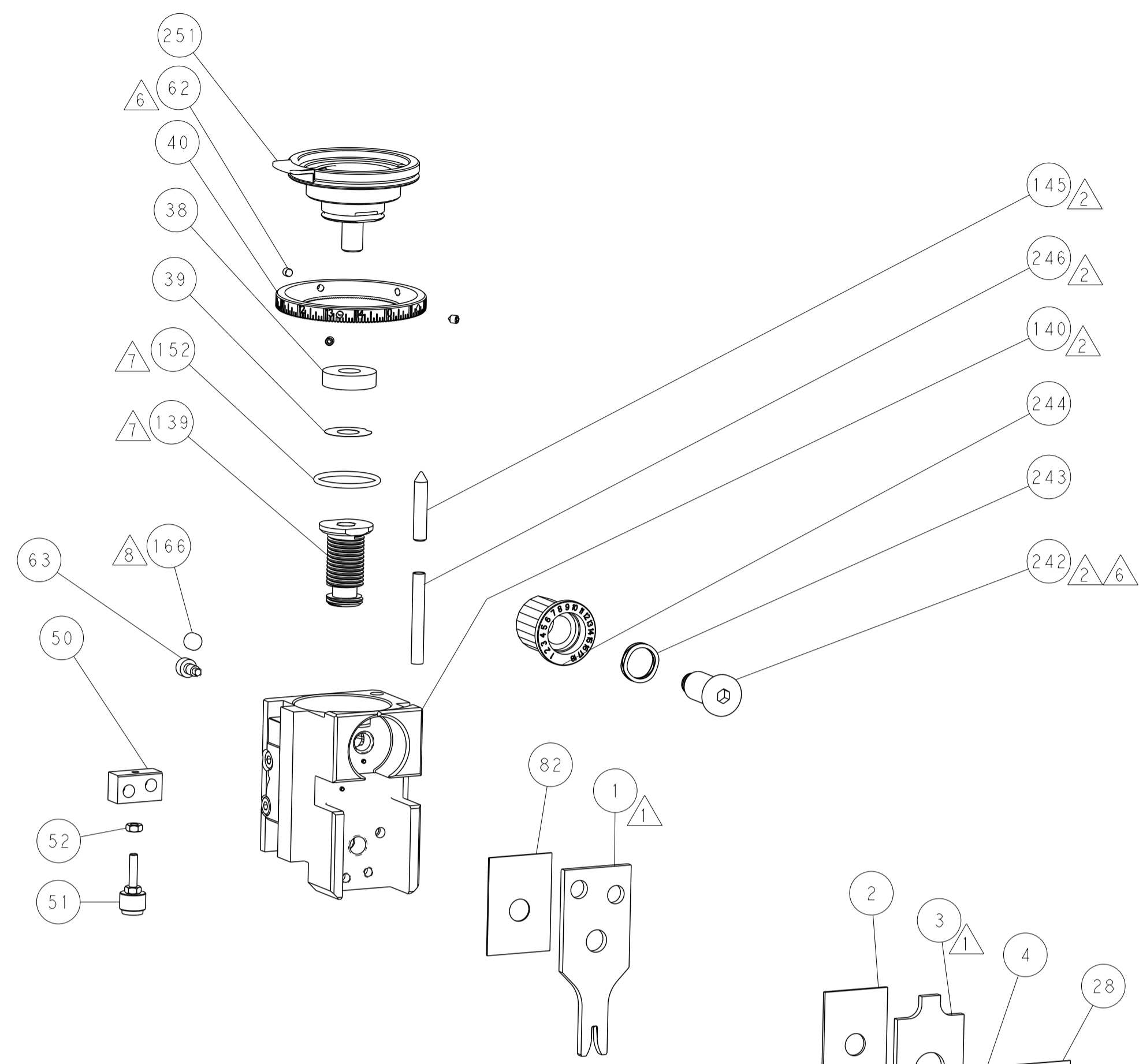
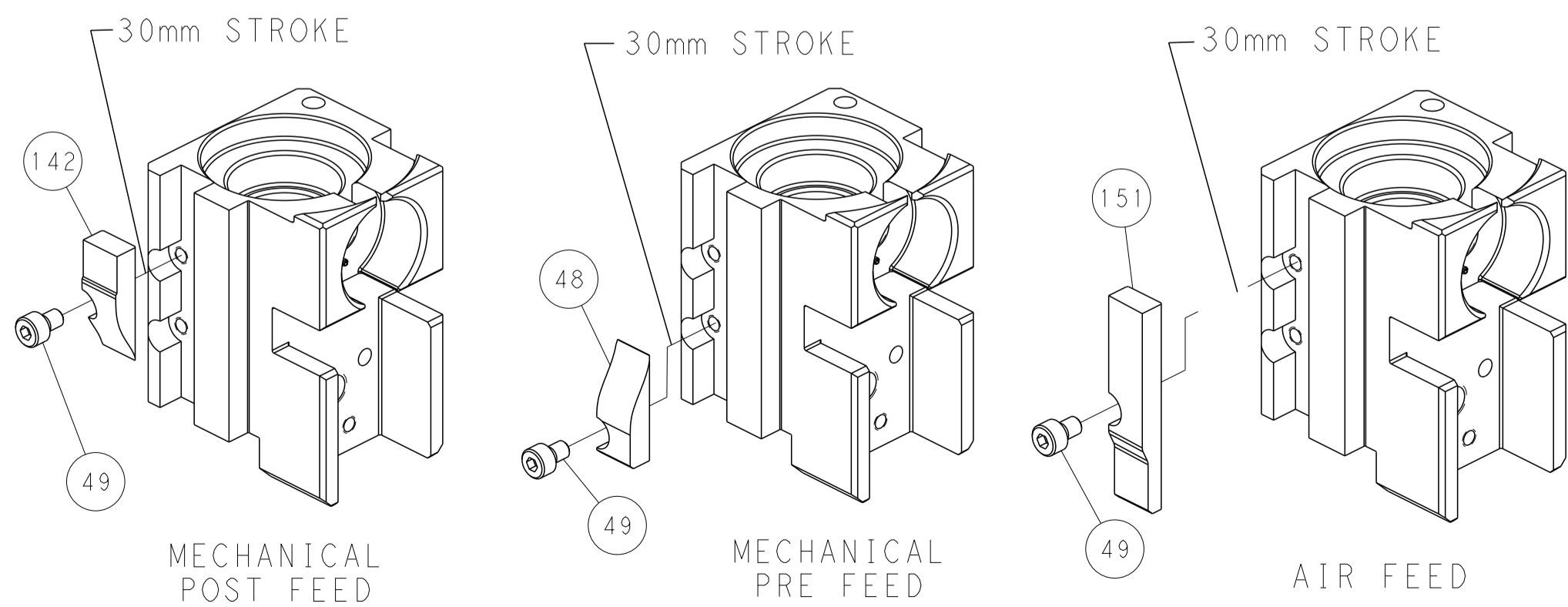
# PNEUMATIC



# SERVO LATCH PLATE



# CAM POSITIONS



**PACIFIC VERSION**  
 Shown on sheets 3 of 4 & 4 of 4  
 (Atlantic version shown on sheets 1 of 4 & 2 of 4)

DIMENSIONS:		TOLERANCES UNLESS OTHERWISE SPECIFIED:		DWG: Y. YIN 09JUL2014		CHK: G. BAILEY 09JUL2014		APVD: H. GUO 09JUL2014		NAME: Ocean Side Feed Applicator	
mm	0 PLC ±0.5	1 PLC ±0.5	2 PLC ±0.13	3 PLC ±0.013	4 PLC ±0.001	ANGLES ±0.0001	FINISH	SIZE: A1	CAGE CODE: 00779	DRAWING NO: C=2266413	RESTRICTED TO: -
MATERIAL:		FINISH:		WEIGHT:		SCALE: 1:2		SHEET: 4		REV: A	