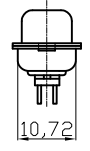
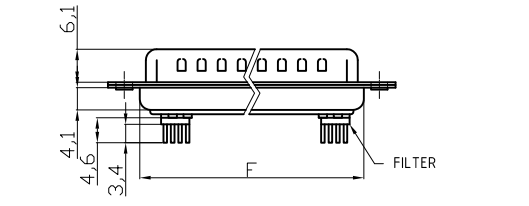
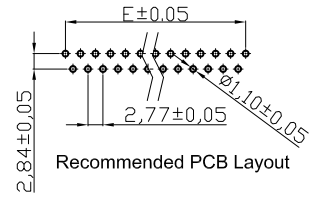
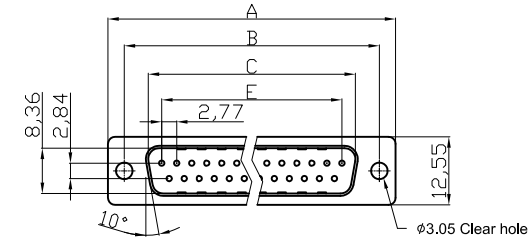


Male



NOTES:

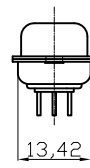
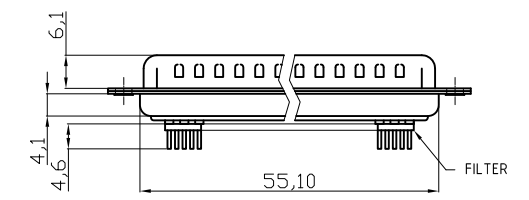
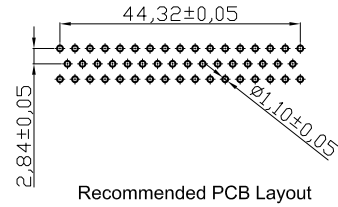
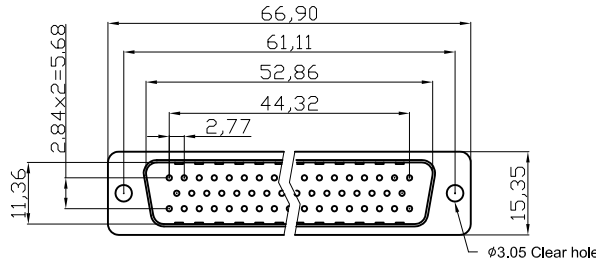
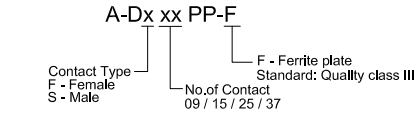
MATERIAL

- 1. Insulator Material: Glass-filled thermoplastic PBT, UL94V-0
- 2. Contact Material: Copper alloy
- 3. Shell : SPCC

ELECTRICAL

- 1. Current Rating : 3AMP
 - 2. Voltage Rating : 250V AC/rms 60Hz
 - 3. Contact Resistance: 20mΩ Max at 1 AMP DC
 - 4. Insulation Resistance: 1000MΩ min at 500 VDC
 - 5. Withstand Voltage: 1000V AC/rms 60Hz for 1 minute
- Operating Temperature: -20°C~ +85°C

Order Code:



Dimensions

Positions	A	B	C	E	F
09	30.81	24.99	16.92	11.08	19.20
15	39.20	33.30	25.25	19.39	27.70
25	53.04	47.04	38.96	33.24	41.10
37	69.40	63.50	55.42	49.86	57.30

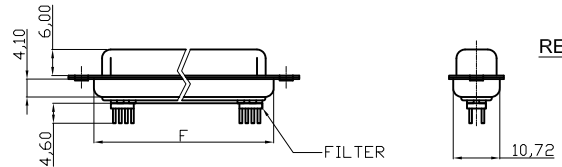
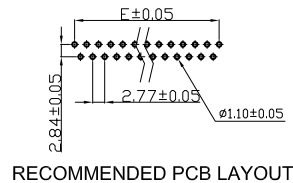
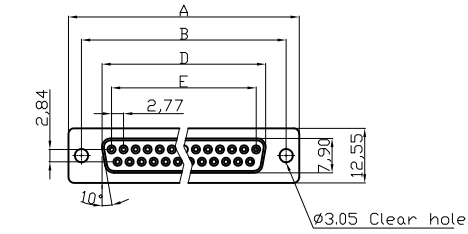
50 Positions

RoHS compliant
Unit:mm

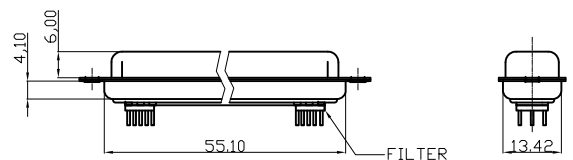
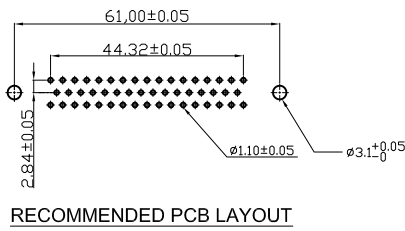
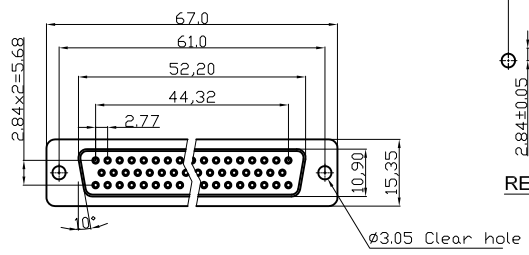
Scale	Free				Date	Name	Customer-No.
TOLERANCE				Drawn	15.08.2012	Lucas	
X.	±0.38			Approved	15.08.2012	Winnie	
X.X	±0.25						
X.XX	±0.13						
DIM	TOL						Drawing-No.
X.°	±3°						ASSMANN WSW-No. A-Dx xx PP-F
X.X°	±1.0°	ⓐ	Drawn	15.08.2012	Lucas		
Angle	TOL	Id.	Modification	Date	Name		ASSMANN WSW components

							Drawing-No.
							ASSMANN WSW-No. A-Dx xx PP-F
							ASS 4898 CO
							rev00
							Replace
							Sheet 1/2

Female



Product Specification
Material
 Insulator : Glass-Filled Thermoplastic PBT,UL94V-0,Black
 Contact : Copper alloy, Gold flash selective gold
 Shell: SPCC
 Clinch Nut : Brass, Nickel Plated
 Screwlock : Brass, Nickel Plated
Electrical
 Contact Resistance : 20 milliohms Max at 1 AMP DC.
 Insulation Resistance : 1000 megohms at 500 VDC
 Dielectric Withstanding Voltage : 1000 VAC/rms 60Hz for 1 minute
 Current Rating : 3 AMP
 Voltage Rating : 250 VAC/rms 60Hz
 OPERATING TEMPERATURE:-20°C+85°C



50 POSITIONS

DIMENSION TABLE

POSITIONS	A±0.15	B±0.10	D±0.13	E±0.08	F±0.10
9	30.81	24.99	16.33	11.08	19.20
15	39.14	33.32	24.66	19.39	27.70
25	53.04	47.04	38.38	33.24	41.10
37	69.32	63.50	54.84	49.86	57.30

RoHS compliant

Unit: mm



File No.: E198287

Scale	Free				Date	Name	Customer-No.
TOLERANCE					Drawn	15.08.2012	Lucas
X.	±0.38				Approved	15.08.2012	Winnie
X.X	±0.25						
X.XX	±0.13						
DIM	TOL						
X.°	±3°						
X.X°	±1.0°	Ⓢ	Drawn	15.08.2012	Lucas		
Angle	TOL	Id.	Modification	Date	Name		



Drawing-No.		ASS 4898 CO	rev00
Replace			
Sheet		2/2	

1

2

3

4

5

6

7