

4

3

2

1

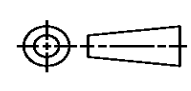
THIS DRAWING IS UNPUBLISHED. RELEASED FOR PUBLICATION
© COPYRIGHT ALL RIGHTS RESERVED.

LOC	DIST	REVISIONS			
P	LTR	DESCRIPTION	DATE	DWN	APVD
	J1	ECR-14-002916	27FEB2014	GK	HMR

REPLACED BY OCEAN STYLE APPLICATOR PART NUMBER 2150365-1

FOR REPLACEMENT PARTS FOR APPLICATOR 1529024
REFER TO ADDITIONAL PAGE(S). SPARE PARTS KIT (IF LISTED)
WILL REMAIN AVAILABLE.

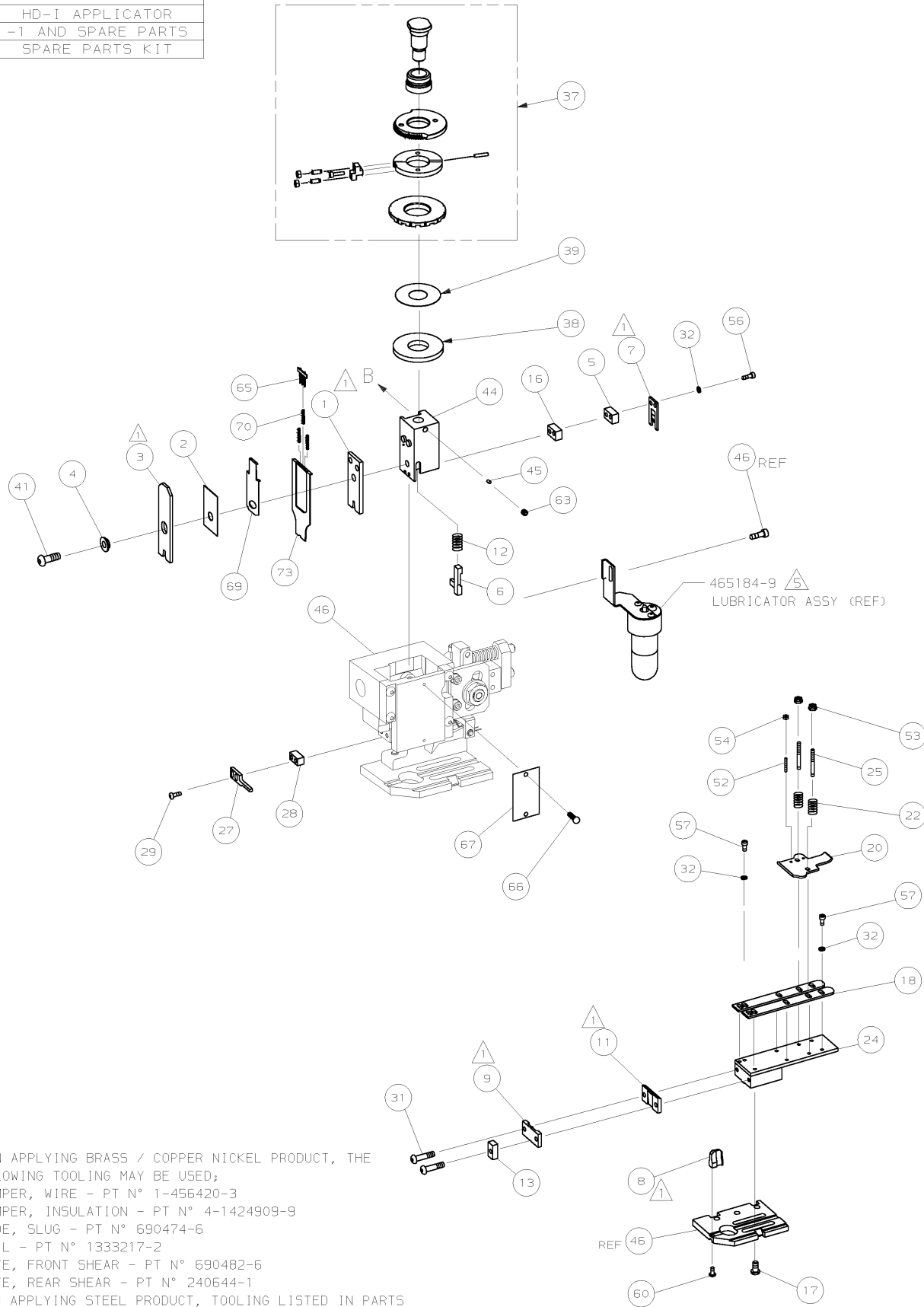
THE REPLACEMENT OCEAN STYLE APPLICATOR HAS THE
SAME TERMINATOR/PRESS INTERFACE AS APPLICATOR
1529024

THIS DRAWING IS A CONTROLLED DOCUMENT.		DWN	GOPALAKRISHNA HV		
DIMENSIONS:		CHK	RAGHAVENDRA		
		APVD	RAGHAVENDRA		
TOLERANCES UNLESS OTHERWISE SPECIFIED:		PRODUCT SPEC	NAME		
0 PLC	±	APPLICATION SPEC	FINE ADJ END FD HD-I APPL		
1 PLC	±		SIZE	CAGE CODE	DRAWING NO
2 PLC	±		A3		©- 1529024
3 PLC	±				RESTRICTED TO
4 PLC	±				
ANGLES	±	WEIGHT			
MATERIAL	FINISH	CUSTOMER DRAWING	SCALE	SHEET 1 OF 2	REV J1

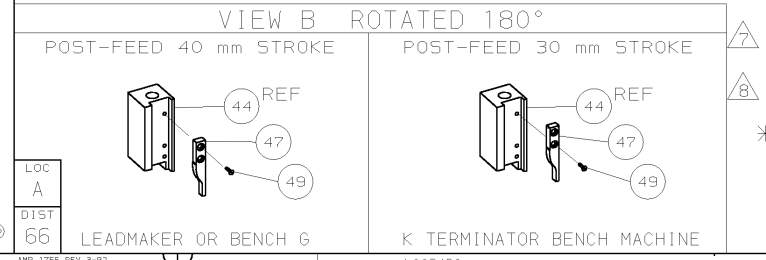


PART NUMBER	REV	FIRST USED	TERMINATOR	FEED TYPE	DESCRIPTION
1529024-1	J	-	BENCH & LEADMAKER	MECH POST FEED	HD-I APPLICATOR
7-1529024-1	J	-	BENCH & LEADMAKER	MECH POST FEED	-1 AND SPARE PARTS
7-1529024-7	J	-	-	-	SPARE PARTS KIT

CRIMP DATA AMP TERMINAL AMP CRIMP SPECS			
TERMINAL NAME: 6.35MM EASY MATE CONTACT RECEPTACLE			
CRIMP	SIZE	TYPE	RANGE
WIRE	2.29 [0.090 IN]	F	0.50 - 1.50mm ²
INSUL	3.30 [0.130 IN]	F	2.00-3.00 [0.079-.118 IN]
WIRE STRIP LENGTH		APPL INSTRUCTION	
4.50-5.00 [0.177-.197 IN]		408-8323 & 408-8490	
TERMINAL	-	-	FEED
APPL SPEC	114-22017	-	18.40 [0.724 IN]
TERMINALS APPLIED			
336075-1	-	-	-
336075-3	-	-	-
336075-5	-	-	-
336075-6	-	-	-
WIRE SIZE	CRIMP HEIGHT	REF SETTING	
mm ² AWG			
1.50mm ²	1.75 ±0.05 [0.069 ±0.002 IN]	B3	
1.00mm ²	1.57 ±0.05 [0.062 ±0.002 IN]	C8	
0.50mm ² + 0.50mm ²	1.57 ±0.05 [0.062 ±0.002 IN]	C8	
0.75mm ²	1.48 ±0.05 [0.058 ±0.002 IN]	D4	
0.50mm ²	1.39 ±0.05 [0.055 ±0.002 IN]	D9	



- 1. RECOMMENDED SPARE PARTS.
- 2. GREASE RAM, CAM, CAM FOLLOWER AND FEED ROD LIGHTLY.
- 3. LUBRICATE DAILY PER THE APPLICATOR INSTRUCTION SHEET SUPPLIED WITH THE APPLICATOR.
- 4. INSULATION DIAMETER FOR DOUBLE WIRE CRIMP 2x0.50mm² IS 2x2.10mm DIAMETER MAX.
- 5. CERTAIN TERMINALS REQUIRE LUBRICATION. REFER TO THE APPLICATOR INSTRUCTION SHEET FOR MORE INFORMATION.
- 6. WHEN APPLYING BRASS / COPPER NICKEL PRODUCT, THE FOLLOWING TOOLING MAY BE USED;
CRIMPER, WIRE - PT N° 1-456420-3
CRIMPER, INSULATION - PT N° 4-1424909-9
BLADE, SLUG - PT N° 690474-6
ANVIL - PT N° 1333217-2
PLATE, FRONT SHEAR - PT N° 690482-6
PLATE, REAR SHEAR - PT N° 240644-1
- 7. WHEN APPLYING STEEL PRODUCT, TOOLING LISTED IN PARTS LIST MUST BE USED.
- 8. WHEN APPLYING STEEL PRODUCT LUBRICANT MUST BE USED.



QTY	REQD	PART NO	DESCRIPTION	ITEM NO	
-	1	1	1490525-3	DEPRESSOR, WIRE	73
-	1	1	1529024	PRINT, APPLICATOR LOG SHEET	72
-	1	1	1338705-4	DOCUMENTATION PACKAGE	71
-	3	3	1-23147-4	SPRING, DEPRESSOR	70
-	1	1	1490524-1	SPACER, DEPRESSOR	69
-	-	-	-	-	68
-	1	1	461264-5	PLATE, IDENTIFICATION	67
-	2	2	21017-2	SCR,DRIVE (#2X.19) ID PLATE	66
-	1	1	1424350-1	HOLDER, PIN, WIRED	65
-	-	-	-	-	64
-	1	1	3-18031-0	SCR,SKT SET (M6X6) RAM	63
-	-	-	-	-	62
-	-	-	-	-	61
-	1	1	18024-7	SCR,BHC (M4X10) ANVIL	60
-	-	-	-	-	59
-	-	-	-	-	58
-	6	6	18023-9	SCR,SHC (M4X6) STRIP GUIDE	57
-	2	2	1-18023-2	SCR,SHC (M4X12) SLUG BLADE	56
-	-	-	-	-	55
-	2	2	18029-1	NUT,HEX (M3) DRAG	54
-	2	2	986965-1	NUT,HEX SL (M4) DRAG STUD	53
-	2	2	2-18032-2	SCR,SKT SET (M3X10) DRAG	52
-	-	-	-	-	51
-	-	-	-	-	50
-	1	1	18024-3	SCR,BHC (M3X10) CAM	49
-	-	-	-	-	48
-	1	1	1338676-1	CAM, POST-FEED 30 & 40 mm ST	47
-	1	1	1338662-1	APPLICATOR, BASIC (SUBASSY)	46
-	1	1	690191-1	PLUG, NYLON	45
-	1	1	1320998-1	RAM	44
-	-	-	-	-	43
-	-	-	-	-	42
-	1	1	2-18024-6	SCREW,BHC (M8X25) CRIMPER	41
-	-	-	-	-	40
-	1	1	690125-1	SHIM SUBASSY	39
-	1	1	469367-1	SPACER, FINE ADJUST	38
-	1	1	879103-2	FINE ADJUST HEAD SUBASSY	37
-	-	-	-	-	36
-	-	-	-	-	35
-	-	-	-	-	34
-	-	-	-	-	33
-	8	8	18025-2	WASHER, LOCK (M4) SHEAR BL	32
-	2	2	1-18024-0	SCR,BHC (M4X20) SHEAR PL	31
-	-	-	-	-	30
-	2	2	18024-8	SCR,BHC (M4X12) STRIPPER	29
-	1	1	3-690451-2	SPACER, STRIPPER	28
-	1	1	240639-1	STRIPPER	27
-	-	-	-	-	26
-	2	2	1320906-1	DRAG, STUD	25
-	1	1	1320995-1	STRIP GUIDE	24
-	2	2	4-22281-1	SPRING, DRAG	23
-	-	-	-	-	22
-	1	1	1338665-1	DRAG, STOCK	20
-	-	-	-	-	19
-	2	2	1338663-7	GUIDE, LOWER STRIP	18
-	4	4	1-18024-8	SCR,BHC (M6X12) STRIP GD PL	17
-	1	1	1338708-1	SPACER, SLUG BLADE	16
-	-	-	-	-	15
-	-	-	-	-	14
-	1	1	690481-3	SPACER, HOLD DOWN	13
-	1	1	23846-1	SPRING, HOLD DOWN	12
-	1	1	1333276-1	PLATE, REAR SHEAR	11
-	-	-	-	-	10
-	1	1	1333275-1	PLATE, FRONT SHEAR	9
-	1	2	791857-1	ANVIL	8
-	1	1	1333274-1	BLADE, SLUG	7
-	1	1	1-455892-0	HOLD DOWN, TERMINAL	6
-	1	1	240641-2	SPACER, SLUG BLADE	5
-	1	1	238009-1	SPACER, BLOCK CRIMPER	4
-	1	2	791856-1	CRIMPER, INSULATION	3
-	1	1	455888-3	SPACER, CRIMPER	2
-	1	2	791854-1	CRIMPER, WIRE	1

LOC	DIST	DESCRIPTION
A	66	LEADMAKER OR BENCH G
K		TERMINATOR BENCH MACHINE

REV	DESCRIPTION	DATE	BY	APP
J	SEE ECN 015A-0204-05	MC MAR05	MC	MAR05
H	0150-0328-04	RK MAR04	RK	MAR04
G	0150-0944-03	CE AUG03	CE	AUG03
F	0150-1440-02	CE NOV02	CE	NOV02
E	0150-1229-02	TE ISEP02	TE	ISEP02
D	0150-1212-02	TE ISEP02	TE	ISEP02
C	ECN 0150-0833-02	DS I5-02	DS	I5-02
B	SEE ECN 015A-0366-02	MC MAY02	MC	MAY02
A	SEE ECN 015A-0185-02	MC MAR02	MC	MAR02
P	REVISION RECORD	APP		DATE

DR	M. CLIFFORD	APP	F. BACKHURST
CHK		REL	M. CLIFFORD

NAME	FINE ADJ END FD HD-I APPL	MACHINE REF	HD-I APPL
SCALE	1:1	SHEET	1 OF 1
DWG NO	1529024	REV	J