

TMMH-1XX-XX-XX-X-XXX

No OF POSITIONS (SEE TABLE 2)

LEAD STYLE
 -01: .126 [3.20] (USE T-1S13-07-XX-2)
 -04: .075 [1.91] (USE T-1S13-04-XX-2)
 *-05: .065 [1.65] (USE T-1S13-07-XX-2) N/A WITH -6 ROW OPTION
 -06: .126 [3.20] (USE T-1S13-31-XX-2)
 * = SEE NOTE 8

OPTIONS
 -XXX: INDICATES POSITION POLARIZED

ROW OPTION
 SEE TABLE 2

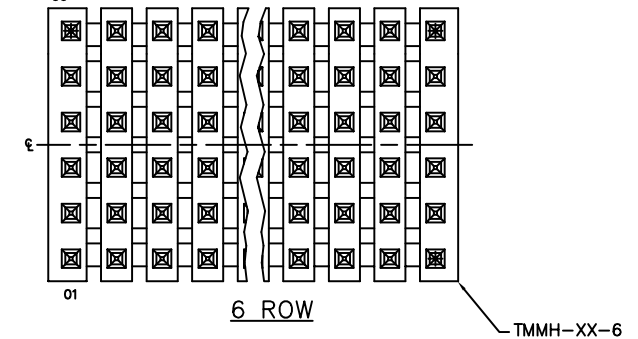
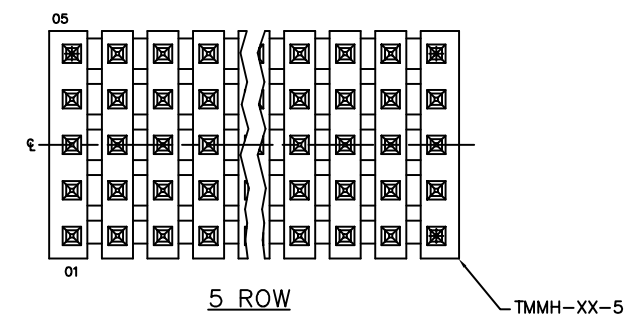
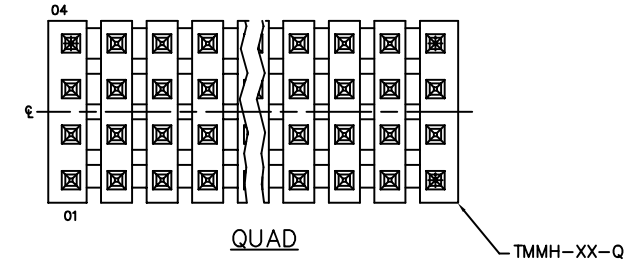
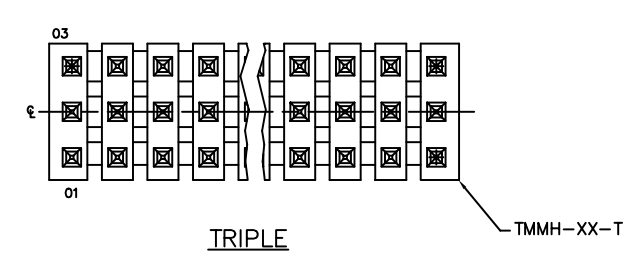
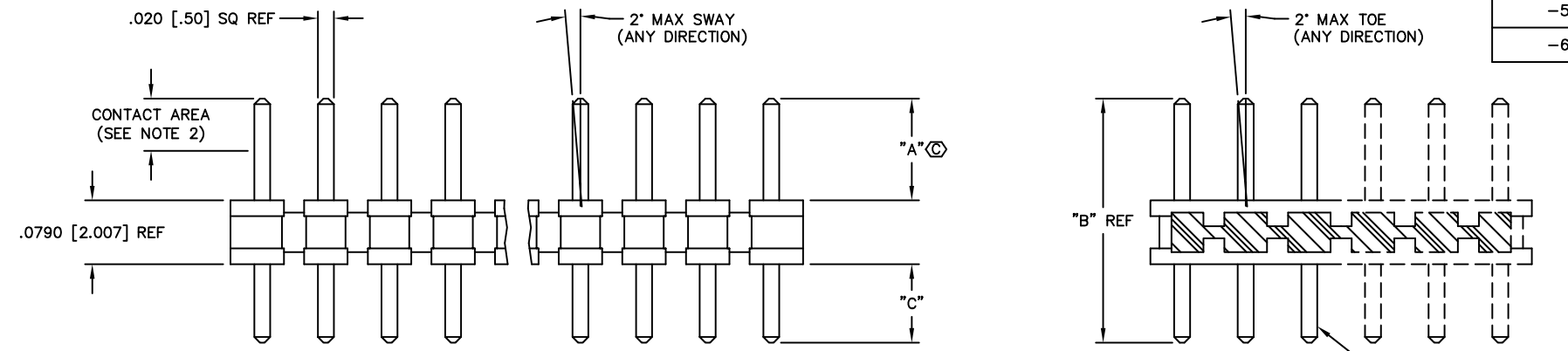
PLATING
 -L: LIGHT SELECTIVE GOLD (USE T-1S13-XX-L-2)
 -F: FLASH GOLD (USE T-1S13-XX-F-2)
 -S: SELECTIVE GOLD (USE T-1S13-XX-S-2)
 -G: GOLD (USE T-1S13-XX-G-2)
 -T: TIN (USE T-1S13-XX-T-2)
 -TM: MATTE TIN (USE T-1S13-XX-T-2)
 -LM: LIGHT SELECTIVE GOLD/MATTE TIN TAIL (USE T-1S13-XX-L-2)
 -FM: FLASH GOLD/MATTE TIN TAIL (USE T-1S13-XX-F-2)
 -SM: SELECTIVE GOLD/MATTE TIN TAIL (USE T-1S13-XX-S-2)
 -H: HEAVY GOLD (USE T-1S13-XX-H-2)

TABLE 1

| LEAD STYLE | "A" | "B" | TERMINAL | "C" |
|------------|-------------|-------------|----------------|-------------|
| -01 | .126 [3.20] | .302 [7.67] | T-1S13-07-XX-2 | .097 [2.46] |
| -04 | .075 [1.91] | .255 [6.48] | T-1S13-04-XX-2 | .101 [2.57] |
| -05 | .065 [1.65] | .234 [5.94] | T-1S13-07-XX-2 | .090 [2.29] |
| -06 | .126 [3.20] | .344 [8.74] | T-1S13-31-XX-2 | .139 [3.53] |

TABLE 2

| ROW OPTION | BODY CALLOUT | "D" | "E" | NO OF POS |
|------------|--------------|--------------|-----|--------------|
| -T | TMMH-XX-T | .236 [5.99] | 2 | -03 THRU -50 |
| -Q | TMMH-XX-Q | .314 [7.98] | 3 | -04 THRU -50 |
| -5 | TMMH-XX-5 | .393 [9.98] | 4 | -05 THRU -50 |
| -6 | TMMH-XX-6 | .472 [11.99] | 5 | -06 THRU -50 |



- NOTES:
- PARTS MAY BE CUT TO POSITION.
 - GOLD PLATING TO BE ON POST, TIN PLATING ON TAIL ON SELECTIVE PLATED PART.
 - Ⓢ REPRESENTS A CRITICAL DIMENSION.
 - MINIMUM PUSHOUT FORCE: 1.0 LB.
 - BULK PACKAGED
 - NOTE DELETED.
 - .020 MAX CUT FLASH.
 - MUST SHEAR TO DIMENSION SHOWN.

PROPRIETARY NOTE
 THIS DOCUMENT CONTAINS INFORMATION CONFIDENTIAL AND PROPRIETARY TO SAMTEC INC. AND SHALL NOT BE REPRODUCED OR TRANSMITTED TO OTHER DOCUMENTS OR DISCLOSED TO OTHERS OR USED FOR ANY PURPOSE OTHER THAN THAT FOR WHICH IT WAS OBTAINED WITHOUT THE EXPRESSED WRITTEN CONSENT OF SAMTEC INC.

PLOT SCALE: 1 = .125/ DIMSCALE: 1 = .100

samtec
 EXISPROD\ASSEMBLY\2MM TMMH6ASM
 810 PROGRESS BLVD. NEW ALBANY, INDIANA 47150
 PHONE (812) 944-6733 P.O. BOX 1147
 CODE 55322

MADE BY: BRATCHER 11-17-97 TMMH-1XX-XX-XX-X-XXX
 SHEET 1 OF 1

This document was created with Win2PDF available at <http://www.daneprairie.com>.
The unregistered version of Win2PDF is for evaluation or non-commercial use only.