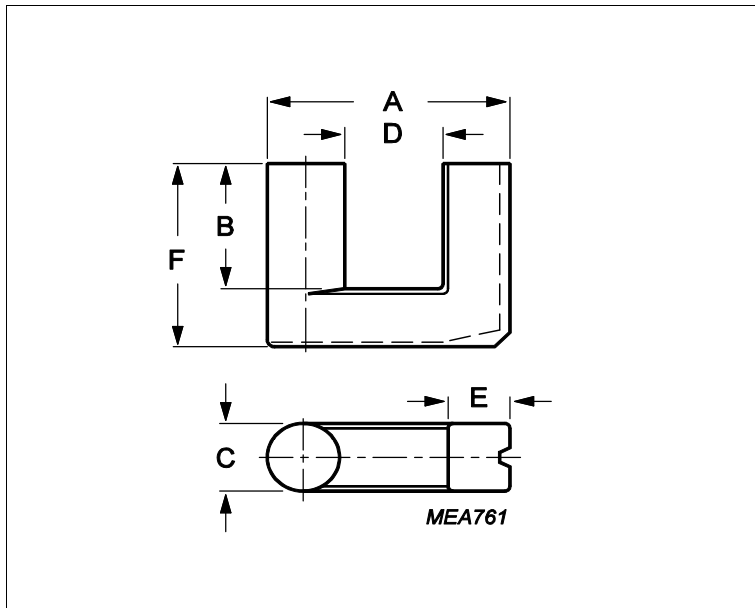


## Core **UR39/35/15**



Effective parameters			
	Parameter	Value	Unit
$\Sigma(I/A)$	core factor (C1)	1.094	mm <sup>-1</sup>
<b>Ve</b>	effective volume	24300	mm <sup>3</sup>
<b>Le</b>	effective length	163	mm
<b>Ae</b>	effective area	149	mm <sup>2</sup>
<b>Amin</b>	minimum area		mm <sup>2</sup>
<b>m</b>	UR39/35/15	≈ 64	g/pcs

Dimensions for product: UR39/35/15						
	Nom	Tol +	Tol -	Max	Min	Unit
<b>A</b>	38.70	1.00	1.00	39.70	37.70	mm
<b>B</b>	24.80	0.50	0.50	25.30	24.30	mm
<b>C</b>	14.90	0.30	0.30	15.20	14.60	mm
<b>D</b>	16.00	1.00	1.00	15.00	15.00	mm
<b>E</b>	9.10	0.30	0.30	9.40	8.80	mm
<b>F</b>	35.20	0.20	0.20	35.40	35.00	mm

Inductance factor				
Material	Value	Tol +	Tol -	Unit
3C90	2200	25%	25%	nH/turns <sup>2</sup>

Power loss: 3C90				
Measuring conditions			Max	Unit
25 kHz	200 mT	100 °C	2.900	W/set

Bsat					
Measuring conditions			Material	Min	Unit
10 kHz	250 A/m	100 °C	3C90	320	mT