

PART NUMBER	ENG. NUMBER	MATERIAL (SEE NOTE 1)
39-01-3028	5557-02R1-210	94V-0
39-01-3048	5557-04R1-210	94V-0
39-01-3022	5557-02R1	94V-2
39-01-3042	5557-04R1	94V-2
39-01-6026	5557-02R1-BL	94V-2, BLACK
NO E.D.P.	5557-04R1-BL	94V-2, BLACK

LEGEND:

5557-* R1-*****

BASE NUMBER ———

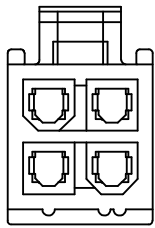
CKT. SIZE ———

RECEPTACLE ———

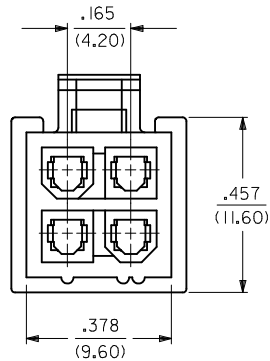
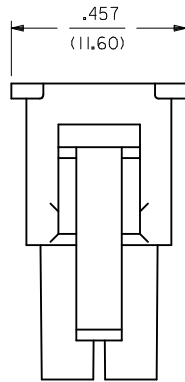
(WITH SIDE PULL TABS)

MATERIAL OPTION: ———

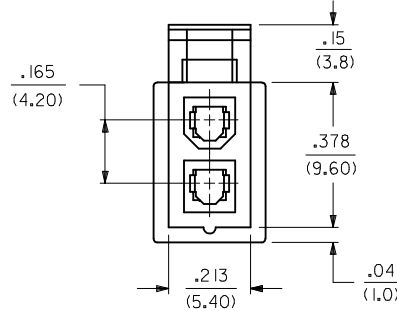
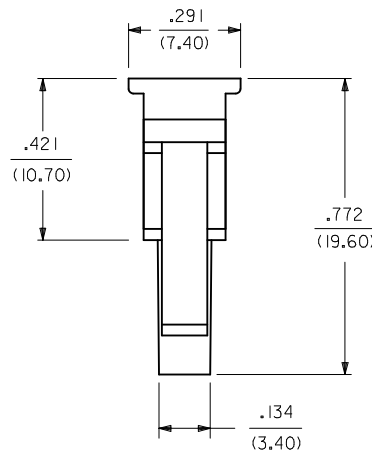
(SEE NOTE 1)



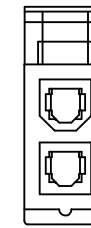
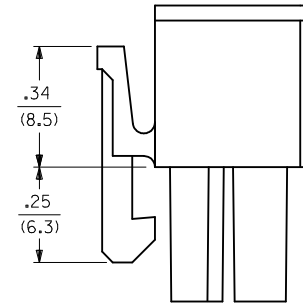
5557-04R-**
(WITHOUT SIDE PULL TABS)
(SHOWN FOR REFERENCE ONLY)



5557-04R1-**



5557-02R1-**



5557-02R-**
(WITHOUT SIDE PULL TABS)
(SHOWN FOR REFERENCE ONLY)

NOTES:

- MATERIAL:
"BLANK" = NYLON 6/6, U.L. 94V-2. COLOR: NATURAL.
"210" = NYLON 6/6, U.L. 94V-0. COLOR: NATURAL.
"BL" = NYLON 6/6, U.L. 94V-2. COLOR: BLACK.
- FINISH: NOT APPLICABLE
- PRODUCT SPECIFICATION: PS-5556-001.
- PARTS TO BE PACKAGED PER PK-5557-002
- PART MATES WITH MOLEX PLUG #5559.
- PART IS FOR USE WITH MOLEX FEMALE TERMINAL #5556.
- PART IS NOT DESIGNED FOR CURRENT SHARING.
- CONNECTORS ARE NOT TO BE MATED OR UNMATED WHILE CIRCUITS ARE LIVE.
- WIRES ARE TO BE DRESSED IN SUCH A MANNER TO ALLOW THE TERMINALS TO FLOAT FREELY IN THE POCKET.
- PART CONFORMS TO CLASS "B" REQUIREMENTS OF COSMETIC SPECIFICATION PS-45499-002

OBS 220 P/NS EC NO: UCP2015-2508 DRWN: DFOX 2015/03/18 CHKD: JELL 2015/03/18 APPR: FSMITH 2015/03/24	QUALITY SYMBOLS ▽=0 ▽=0 ▽=0	GENERAL TOLERANCES (UNLESS SPECIFIED)		DIMENSION STYLE	SCALE	DESIGN UNITS	THIRD ANGLE PROJECTION	
		mm	INCH	IN/MM	4:1	METRIC		
		4 PLACES ± .015	± .015	DRAWN BY	DATE	TITLE		
		3 PLACES ± .015	± .015	GEP	1990/08/08	2 & 4 CKT RECEPTACLE, MINI-FIT JR. SERIES WITH SIDE TABS		
		2 PLACES ± .015	± .015	CHECKED BY	DATE	molex		
		1 PLACE ± .015	± .015	RJF				
		0 PLACE ± .015	± .015	APPROVED BY	DATE	DOCUMENT NO.		
				FSMITH	2012/05/04	SD-5557-***R1-*		
		ANGULAR ±1/2°		MATERIAL NO.		SHEET NO.		
		DRAFT WHERE APPLICABLE MUST REMAIN WITHIN DIMENSIONS		SEE CHART		1 OF 1		
		THIS DRAWING CONTAINS INFORMATION THAT IS PROPRIETARY TO MOLEX INCORPORATED AND SHOULD NOT BE USED WITHOUT WRITTEN PERMISSION						