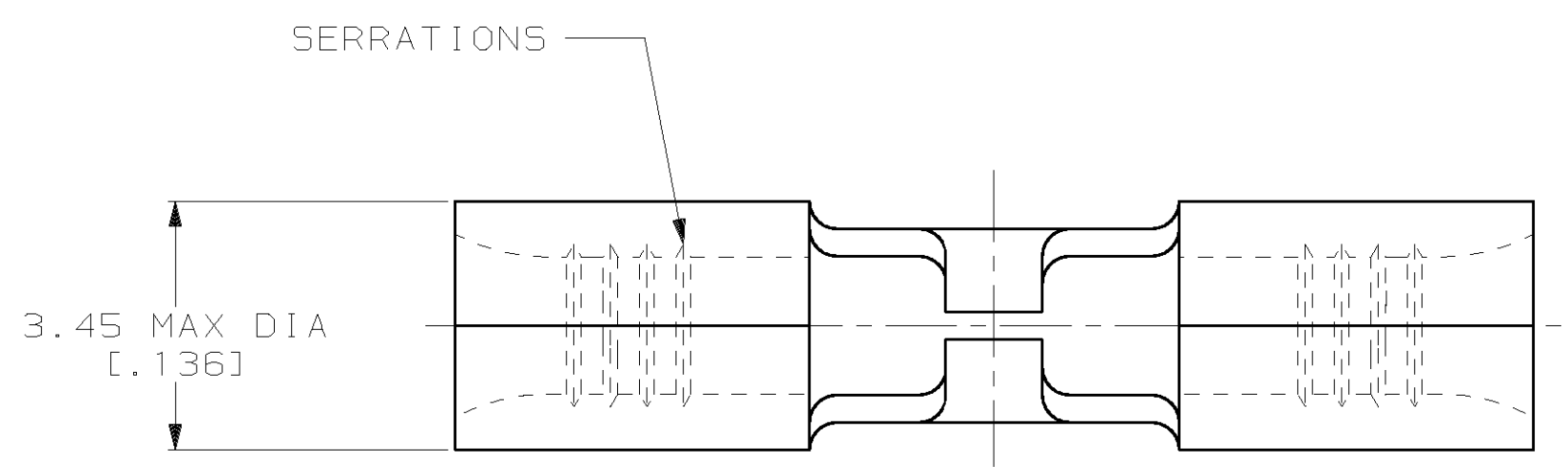


THIS DRAWING IS UNPUBLISHED. RELEASED FOR PUBLICATION ,19 .  
 © COPYRIGHT 19 BY AMP INCORPORATED. ALL INTERNATIONAL RIGHTS RESERVED.

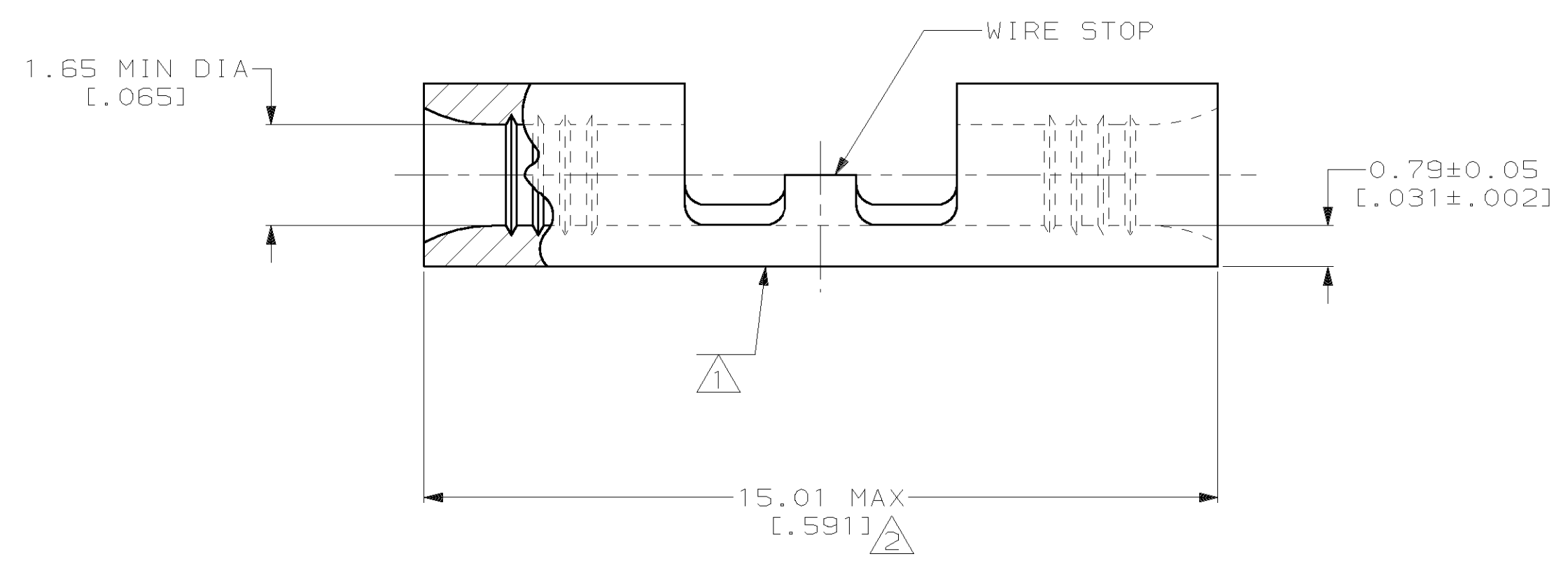
LOC	DIST	P	F	ZONE	LTR	DESCRIPTION	DATE	APPD
G	14				G	REV PER 0G3A-0363-00	15JUN00	JR/MJS

**METRIC**  
 DIMENSIONS LISTED IN mm [ INCHES ]



<b>AMP</b> WIRE RANGE	<b>UL</b> E13288 Listed
22-16 AWG STRANDED	22-16 AWG STRANDED
<b>CS</b> LR7189 Certified	<b>MILITARY P/N</b> AND CLASS
NOT CERTIFIED	NOT APPLICABLE

- ① STAMP AMP 22-18\* APPROX AS SHOWN  
22-16 SPLICES ARE STAMPED 22-18 IN  
ACCORDANCE WITH MILITARY SPEC MIL-T-7928  
COMMERCIAL WIRE RANGE IS 22-16
- ② MAXIMUM LENGTH DOES NOT INCLUDE  
MANUFACTURING TABS
- ③ TIN PL 0.00254 [0.00100] MIN THK PER ASTM B 545



<p><b>AMP INCORPORATED</b> CUSTOMER SERVICE SYSTEMS</p>		<p>MAX RECOMMENDED OPERATING TEMPERATURE: 170°C MAX</p>	<p>DO NOT SCALE PRINT. UNLESS SPECIFIED DIMENSIONS IN mm [INCHES] TOLERANCES ON: 2 PLC DEC ± - 3 PLC DEC ± - ANGLES ± -</p>	<p>DR 2-25-93 TA BRINKMAN CHK 2-25-93 DA PATTERSON APPD 2-25-93 DE MILLER APPD 2-25-93 JL MECKLEY</p>	<p><b>AMP</b> AMP Incorporated Harrisburg, PA 17105-3608</p>			
<p>FOR ADDITIONAL PRODUCT INFORMATION OR COPIES OF DRAWINGS AND TECHNICAL DOCUMENTS</p>	<p>PRODUCT INFORMATION CENTER 1-800-522-6752</p>	<p>VOLTAGE RATING: NOT APPLICABLE</p>	<p>MATERIAL COPPER PER ASTM B-152 ANNEALED</p>	<p>PRODUCT SPEC -</p>	<p>NAME <b>SPLICE, BUTT, STRAP, BUDGET</b></p>			
<p>FOR APPLICATION TOOLING INFORMATION</p>	<p>TOOLING ASSISTANCE CENTER 1-800-722-1111</p>	<p>WIRE CROSS SECTIONAL AREA RANGE: 0.26-1.65mm<sup>2</sup> [509-3,260] CIR MILS STRANDED</p>	<p>FINISH SEE TABLE</p>	<p>APPLICATION SPEC -</p>		<p>SIZE C 00779</p>	<p>CAGE CODE C-32463</p>	<p>DRAWING NO C-32463</p>
<p>FOR ORDER ENTRY</p>	<p>1-800-526-5142</p>	<p>THIS DRAWING IS A CONTROLLED DOCUMENT FOR AMP INCORPORATED. IT IS SUBJECT TO CHANGE AND THE CONTROLLING ENGINEERING ORGANIZATION SHOULD BE CONTACTED FOR THE LATEST REVISION.</p>	<p>WEIGHT -</p>	<p>SCALE 10:1</p>		<p>SHEET 1 OF 1</p>		