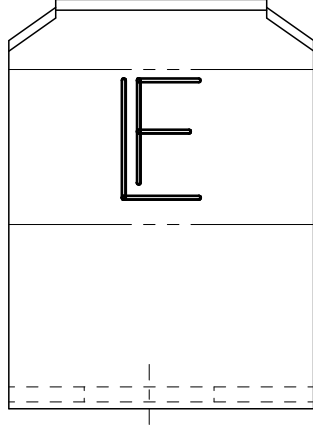
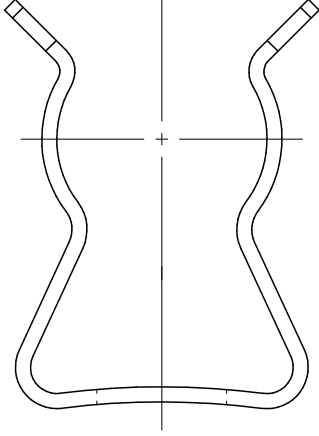
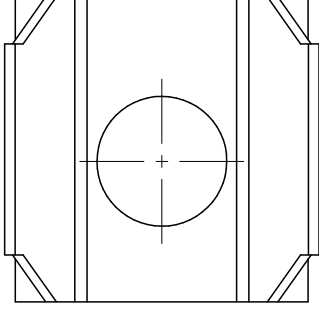


MATERIAL	PLATING	NOM. PLATING WT. (GRS)	VENDOR
BRASS	NICKEL /COPPER	Ni = .015: Cu = .003	FORMCO



NOTE:

FUSE CLIP 104012
 BRIGHT NICKEL PLATED
 .0001 MIN.

UNLESS OTHERWISE SPECIFIED, DIMENSIONS DO NOT INCLUDE PLATING.
 CPK DENOTES CRITICAL CHARACTERISTICS.
 CPK DENOTES CPK DIMENSIONS, -MINIMUM CPK VALUE
 (S) DENOTES A CHARACTERISTIC THAT PROVIDES AN INDICATION OF PROCESS PERFORMANCE. PROCEDURE FOR MEASUREMENT AND TRACKING TO BE DEFINED IN INTTEL/FUSE INSPECTION INSTRUCTIONS.
 CP DENOTES CP DIMENSIONS, -MINIMUM CP VALUE (MUST BE WITHIN THE DIMENSIONAL LIMITATIONS SHOWN ON DRAWING AND INITIALLY LOCATED TO ALLOW FOR MAXIMUM TOOL LIFE.

2	010104	NICKEL ANODE	.038	LB
1	104012	FUSE CLIP	1000	EA
NO	COMPONENT NO	DESCRIPTION	QTY/M	U/M

BILL OF MATERIAL

MATERIAL SPEC		FINISH		SEE NOTE	
COPIES TO	DRW	PJM	DATE	08/02/02	SCALE
1	9	18			4:1
2	10	19			
3	12	20			
4	13	21			
5	14	23			
6	15	33			
7	16	43			
8	17	53			
TOLERANCE UNLESS OTHERWISE SPECIFIED		TWO PLACE DEC ±.01		FRACTION ±	
THREE PLACE DEC ±.005		ANGULAR		±1°	
TITLE		FUSE CLIP		LBS/M	

LTR	REVISION	CHK	APD
-----	-----------------	-----	-----

D	60909 - REINSTATED 08/02/02 PJM		
F	85400D-ADDED CHART 3/02/07 RP		

REVISION	NO.	FINAL
E	01040002Z	

