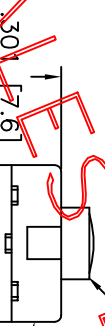
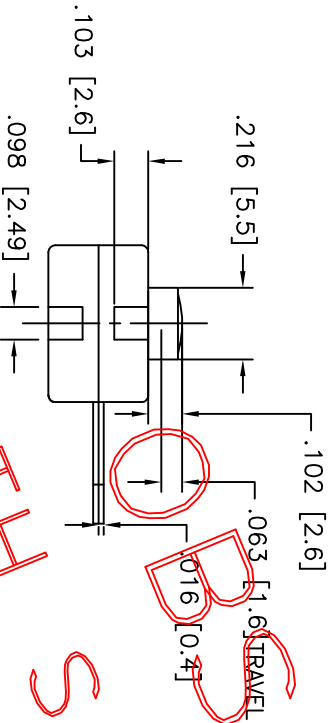
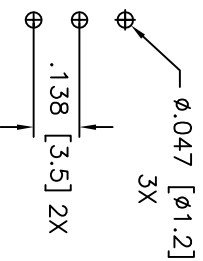
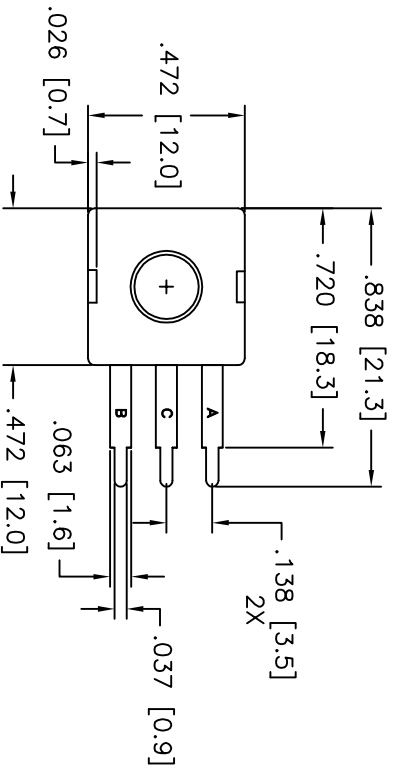
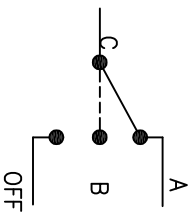


LTR	EN	DESCRIPTION	APPR	BY	DATE
-	A	INITIAL RELEASE	RB	NH	09-30-05
-	B	ADDED CUSTOMER PART# AND CHANGE DIMENSIONS FROM MM TO INCH.	RB	DC	12-20-05
-	B1	ADDED COLOR OF ACTUATOR (BLUE).	RB	DC	12-28-05
-	B2	CHANGE SCHEMATIC DIAGRAM TO MATCH SWITCH OPERATION.	RB	DC	02-13-06
-	C	UPDATED DRAWING TO MATCH SAMPLE PARTS. CALLED OUT DIMENSIONS BOTH IN INCHES & MM.	MT	DC	10-18-07
-	C1	ADDED HEIGHT OF PLUNGER AND TRAVEL.	MT	DC	08-06-08
-	C2	ADDED TOLERANCES	MT	DC	08-07-08



BLACK

BLUE



SCHEMATIC

RECOMMENDED MOUNTING PATTERN

USING

CHECK WITH SALES BEFORE

JUDCO INVENTORY NO. 50-0089-00  
 SWITCH TYPE: SPDT J-977-8 (ON A-ON B-OFF)  
 ELECTRICAL RATING: 12 VDC, 500mA

CUSTOMER:  
 CUSTOMER PN:  
 APPROVED BY:  
 DATE:

DO NOT SCALE DRAWING  
 DIMENSIONS IN INCHES (MM)  
 UNLESS OTHERWISE SPECIFIED  
 TOLERANCES: ANGLE: X.X' ±5'  
 X.XX ±.012 (0.30) X.X' ±3'  
 X.XXX ±.008 (0.20) X.XX' ±1'  
 X.XXX ±.004 (0.10) X.XX' ±1'

HARBOR CITY CALIFORNIA  
 MINI FLAT PACK J977-8  
 W/STRAIGHT TERMINALS

DRAWN: NH 09-30-05  
 APPR: KJ 08-06-08  
 DWG. NO. 1415-860

1415UB60C1.DWG SHEET 1 OF 1

This document embodies a product, component, and/or design proprietary to JUDCO MANUFACTURING INC., and which is protected either as a trade secret, by U.S. Patent, or by copyright. It may not be used in any way without written express consent of JUDCO MANUFACTURING INC.