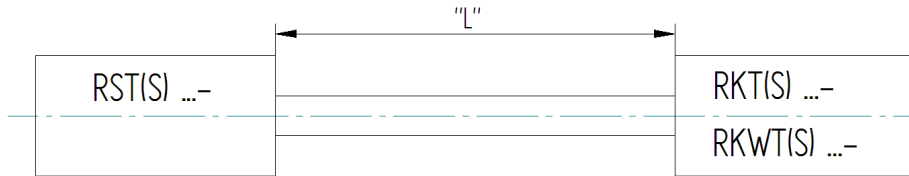
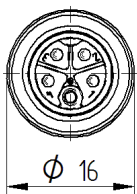
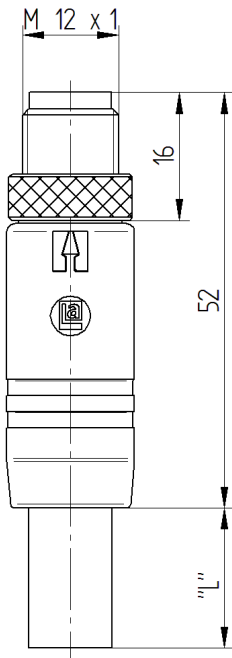


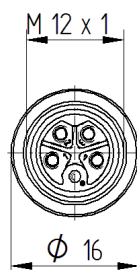
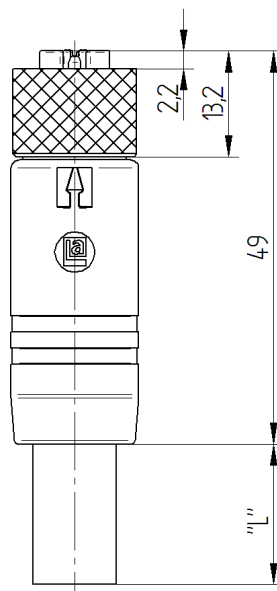
RoHS ✓



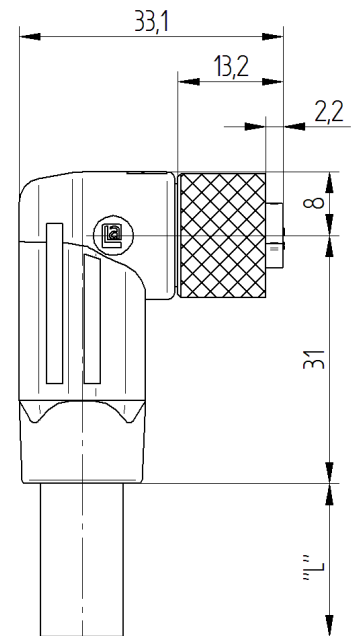
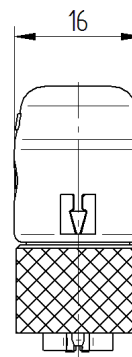
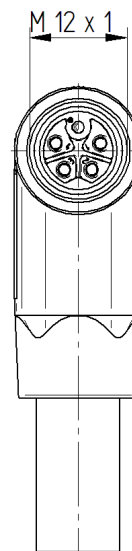
RST(S)...



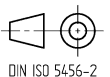
RKT(S)...



RKWT(S)...



The information/details in this datasheet merely contain general descriptions or performance factors which, when applied in an actual situation, do not always correspond with the described form, and may be amended by way of the further development of products. The desired performance factors shall only be binding if these are expressly agreed on conclusion of the contract.



**Datasheet-No. 934-853-999 Type: RS(W)T(S) ... - RK(W)T(S) ...-.../... M**

EN Revision: 07 Created: 2016-10-05 pkuhn **Cord set double ended**

**Product description**

- M12-Power cordset, double ended
- knurled screw with self-locking threaded joint
- Optional 360° shielding connected to knurled screw

Type	RST(S) .... - RKT(S) / RKWT(S) /... M, see standard products
Type of contacts	male - female
Number of contacts	5 (4+PE):, K - Coding 5 (4+FE):, L - Coding 4 (3+PE):, S - Coding 4:, T - Coding
Standard	IEC 61076-2-111
Construction type	K-, L-, S- or T-coded
Conductor size	1,5 mm <sup>2</sup>
Color contact bearer	K: blue L: grey S: black T: dark-grey

Further information see datasheets:

RKT(S)-... , M12 female connector straight  
datasheet number: 934-849-999

RKWT(S)-... , M12 female connector angled  
datasheet number: 934-850-999

RST(S)-... , M12 male connector straight  
datasheet number: 934-851-999

RSWT(S)-... , M12 male connector angled  
datasheet number: 934-852-999

**Technical data**

Clearance / Creepage distance	DIN EN 60664-1 (2008/01); VDE 0110-1
Rated voltage	see table, page 1
Operating voltage	600 V ac/dc, K- / S-Coding 50 V ac / 60 V dc, L- / T-Kodierung
Rated current *	16 A; 1,5 mm <sup>2</sup>
Rated impulse voltage	see table, page 1
Pollution degree	3 acc. to DIN EN 60664-1 (VDE 0110-1)
Contact resistance	≤ 10 mΩ
Insulation resistance	> 10 <sup>9</sup> Ohm
Mating cycles	max. 100

\* Notice derating

**Materials**

Contact	CuNi
Contact plating	Cu/Au
Contact bearer	PBT GF
over molding	TPE, blue or black
Coupling screw	CuZn
O-ring	FKM
Surface coupling screw	Cu/Ni
Shielding sleeve	CuZn, plating: Ni

**Environmental conditions**

Protection class (IEC 60529) *	IP65, IP67
Temperature range (connector)	-40 °C to +125 °C, notice derating

\* only if mounted and locked in combination with Hirschmann / Lumberg connector.

**Flammability class**

over molding	UL 94 HB
Contact bearer	UL 94 V-2

**Approvals**

VDE	DIN EN 61984: in preparation
UL	UL 2238, E315587

**Additional technical data**

Fastening torque (coupling nut)	M 12x1: (50-60) Ncm, hand-light
Fastening torque (coupling screw)	M 12x1: (50-60) Ncm, hand-light

**Cutline**

Do not connect / disconnect under load.

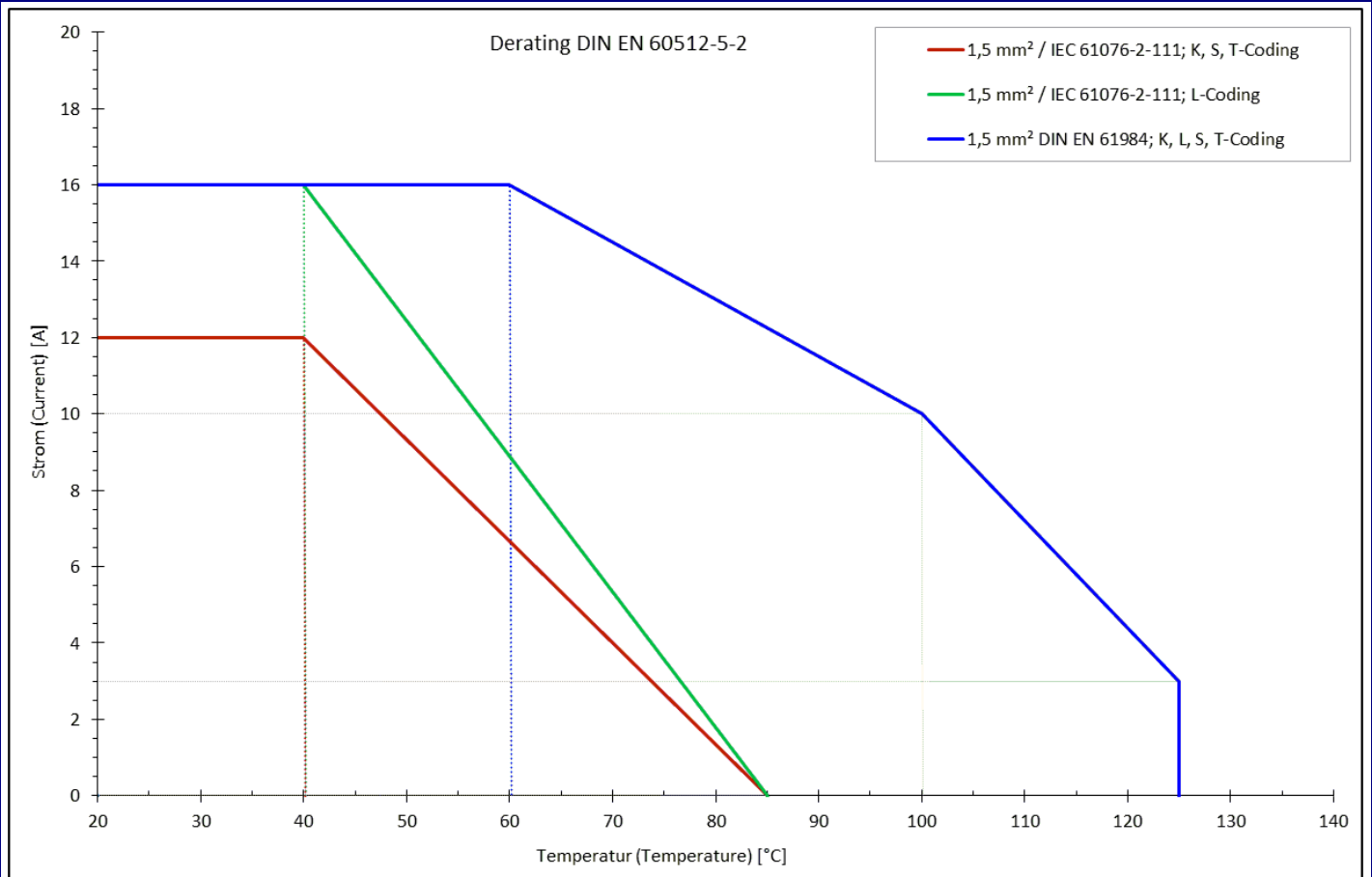
Caution hot!

Under power the surface of the connector can reach a temperature of more then 56 °C (144 °F).

The specified electrical and mechanical characteristics require a properly locked connector.

When the connetor is unlocked and in risk of pollution the connector has to be covered with a protective cap ≥ IP54.

"L" = standard length of control line



**Standard products**

Artikel-No.	Type	Rated voltage	Rated impulse voltage	Cable size
934-853-001	RST 4S-RKT 4S-703/2 M	630 V	6 kV	1,50 mm <sup>2</sup>
934-853-002	RST 4S-RKT 4S-703/5 M	630 V	6 kV	1,50 mm <sup>2</sup>
934-853-003	RST 4S-RKT 4S-703/10 M	630 V	6 kV	1,50 mm <sup>2</sup>
934-853-004	RST 4S-RKT 4S-733/2 M	630 V	6 kV	1,50 mm <sup>2</sup>
934-853-005	RST 4S-RKT 4S-733/5 M	630 V	6 kV	1,50 mm <sup>2</sup>
934-853-006	RST 4S-RKT 4S-733/10 M	630 V	6 kV	1,50 mm <sup>2</sup>
934-853-007	RST 4S-RKWT 4S-703/2	630 V	6 kV	1,50 mm <sup>2</sup>
934-853-008	RST 4S-RKWT 4S-703/5	630 V	6 kV	1,50 mm <sup>2</sup>
934-853-009	RST 4S-RKWT 4S-703/10	630 V	6 kV	1,50 mm <sup>2</sup>
934-853-010	RST 4S-RKWT 4S-733/2	630 V	6 kV	1,50 mm <sup>2</sup>
934-853-011	RST 4S-RKWT 4S-733/5	630 V	6 kV	1,50 mm <sup>2</sup>
934-853-012	RST 4S-RKWT 4S-733/10	630 V	6 kV	1,50 mm <sup>2</sup>
934-853-013	RST 4T-RKT 4T-723/0,3 M	63 V	1,5 kV	1,50 mm <sup>2</sup>
934-853-014	RST 4T-RKT 4T-723/0,6 M	63 V	1,5 kV	1,50 mm <sup>2</sup>
934-853-015	RST 4T-RKT 4T-723/1 M	63 V	1,5 kV	1,50 mm <sup>2</sup>
934-853-016	RST 4T-RKT 4T-723/2 M	63 V	1,5 kV	1,50 mm <sup>2</sup>
934-853-017	RST 4T-RKT 4T-723/5 M	63 V	1,5 kV	1,50 mm <sup>2</sup>
934-853-018	RST 4T-RKT 4T-723/10 M	63 V	1,5 kV	1,50 mm <sup>2</sup>
934-853-025	RST 4T-RKWT 4T-723/0,3	63 V	1,5 kV	1,50 mm <sup>2</sup>
934-853-026	RST 4T-RKWT 4T-723/0,6	63 V	1,5 kV	1,50 mm <sup>2</sup>
934-853-027	RST 4T-RKWT 4T-723/1	63 V	1,5 kV	1,50 mm <sup>2</sup>
934-853-028	RST 4T-RKWT 4T-723/2	63 V	1,5 kV	1,50 mm <sup>2</sup>
934-853-029	RST 4T-RKWT 4T-723/5	63 V	1,5 kV	1,50 mm <sup>2</sup>
934-853-030	RST 4T-RKWT 4T-723/10	63 V	1,5 kV	1,50 mm <sup>2</sup>
934-853-037	RST 5K-RKT 5K-911/2 M	630 V	6 kV	1,50 mm <sup>2</sup>
934-853-038	RST 5K-RKT 5K-911/5 M	630 V	6 kV	1,50 mm <sup>2</sup>
934-853-039	RST 5K-RKT 5K-911/10 M	630 V	6 kV	1,50 mm <sup>2</sup>
934-853-040	RST 5K-RKT 5K-735/2 M	630 V	6 kV	1,50 mm <sup>2</sup>
934-853-041	RST 5K-RKT 5K-735/5 M	630 V	6 kV	1,50 mm <sup>2</sup>
934-853-042	RST 5K-RKT 5K-735/10 M	630 V	6 kV	1,50 mm <sup>2</sup>
934-853-043	RST 5K-RKT 5K-736/2 M	630 V	6 kV	1,50 mm <sup>2</sup>
934-853-044	RST 5K-RKT 5K-736/5 M	630 V	6 kV	1,50 mm <sup>2</sup>
934-853-045	RST 5K-RKT 5K-736/10 M	630 V	6 kV	1,50 mm <sup>2</sup>
934-853-046	RST 5K-RKWT 5K-911/2	630 V	6 kV	1,50 mm <sup>2</sup>
934-853-047	RST 5K-RKWT 5K-911/5	630 V	6 kV	1,50 mm <sup>2</sup>
934-853-048	RST 5K-RKWT 5K-911/10	630 V	6 kV	1,50 mm <sup>2</sup>
934-853-049	RST 5K-RKWT 5K-735/2	630 V	6 kV	1,50 mm <sup>2</sup>
934-853-050	RST 5K-RKWT 5K-735/5	630 V	6 kV	1,50 mm <sup>2</sup>
934-853-051	RST 5K-RKWT 5K-735/10	630 V	6 kV	1,50 mm <sup>2</sup>
934-853-052	RST 5K-RKWT 5K-736/2	630 V	6 kV	1,50 mm <sup>2</sup>
934-853-053	RST 5K-RKWT 5K-736/5	630 V	6 kV	1,50 mm <sup>2</sup>
934-853-054	RST 5K-RKWT 5K-736/10	630 V	6 kV	1,50 mm <sup>2</sup>
934-853-081	RSTS 4S-RKTS 4S-700/2	630 V	6 kV	1,50 mm <sup>2</sup>
934-853-082	RSTS 4S-RKTS 4S-700/5	630 V	6 kV	1,50 mm <sup>2</sup>
934-853-083	RSTS 4S-RKTS 4S-700/1	630 V	6 kV	1,50 mm <sup>2</sup>
934-853-084	RSTS 4S-RKTS 4S-915/2	630 V	6 kV	1,50 mm <sup>2</sup>
934-853-085	RSTS 4S-RKTS 4S-915/5	630 V	6 kV	1,50 mm <sup>2</sup>
934-853-086	RSTS 4S-RKTS 4S-915/1	630 V	6 kV	1,50 mm <sup>2</sup>
934-853-087	RSTS 4S-RKWTS 4S-700/	630 V	6 kV	1,50 mm <sup>2</sup>
934-853-088	RSTS 4S-RKWTS 4S-700/	630 V	6 kV	1,50 mm <sup>2</sup>
934-853-089	RSTS 4S-RKWTS 4S-700/	630 V	6 kV	1,50 mm <sup>2</sup>
934-853-090	RSTS 4S-RKWTS 4S-915/	630 V	6 kV	1,50 mm <sup>2</sup>
934-853-091	RSTS 4S-RKWTS 4S-915/	630 V	6 kV	1,50 mm <sup>2</sup>
934-853-092	RSTS 4S-RKWTS 4S-915/	630 V	6 kV	1,50 mm <sup>2</sup>
934-853-093	RSTS 4T-RKTS 4T-722/0,	63 V	1,5 kV	1,50 mm <sup>2</sup>
934-853-094	RSTS 4T-RKTS 4T-722/0,	63 V	1,5 kV	1,50 mm <sup>2</sup>
934-853-095	RSTS 4T-RKTS 4T-722/1	63 V	1,5 kV	1,50 mm <sup>2</sup>
934-853-096	RSTS 4T-RKTS 4T-722/2	63 V	1,5 kV	1,50 mm <sup>2</sup>
934-853-097	RSTS 4T-RKTS 4T-722/5	63 V	1,5 kV	1,50 mm <sup>2</sup>
934-853-098	RSTS 4T-RKTS 4T-722/10	63 V	1,5 kV	1,50 mm <sup>2</sup>

**Datasheet-No. 934-853-999 Type: RS(W)T(S) ... - RK(W)T(S) ...-.../... M**

EN Revison: 07 Created: 2016-10-05 pkuhn **Cord set double ended**

934-853-105	RSTS 4T-RKWTS 4T-722/	63 V	1,5 kV	1,50 mm <sup>2</sup>
934-853-106	RSTS 4T-RKWTS 4T-722/	63 V	1,5 kV	1,50 mm <sup>2</sup>
934-853-107	RSTS 4T-RKWTS 4T-722/	63 V	1,5 kV	1,50 mm <sup>2</sup>
934-853-108	RSTS 4T-RKWTS 4T-722/	63 V	1,5 kV	1,50 mm <sup>2</sup>
934-853-109	RSTS 4T-RKWTS 4T-722/	63 V	1,5 kV	1,50 mm <sup>2</sup>
934-853-110	RSTS 4T-RKWTS 4T-722/	63 V	1,5 kV	1,50 mm <sup>2</sup>
934-853-117	RSTS 5K-RKTS 5K-910/2	630 V	6 kV	1,50 mm <sup>2</sup>
934-853-118	RSTS 5K-RKTS 5K-910/5	630 V	6 kV	1,50 mm <sup>2</sup>
934-853-119	RSTS 5K-RKTS 5K-910/1	630 V	6 kV	1,50 mm <sup>2</sup>
934-853-120	RSTS 5K-RKTS 5K-916/2	630 V	6 kV	1,50 mm <sup>2</sup>
934-853-121	RSTS 5K-RKTS 5K-916/5	630 V	6 kV	1,50 mm <sup>2</sup>
934-853-122	RSTS 5K-RKTS 5K-916/1	630 V	6 kV	1,50 mm <sup>2</sup>
934-853-123	RSTS 5K-RKWTS 5K-910/	630 V	6 kV	1,50 mm <sup>2</sup>
934-853-124	RSTS 5K-RKWTS 5K-910/	630 V	6 kV	1,50 mm <sup>2</sup>
934-853-125	RSTS 5K-RKWTS 5K-910/	630 V	6 kV	1,50 mm <sup>2</sup>
934-853-126	RSTS 5K-RKWTS 5K-916/	630 V	6 kV	1,50 mm <sup>2</sup>
934-853-127	RSTS 5K-RKWTS 5K-916/	630 V	6 kV	1,50 mm <sup>2</sup>
934-853-128	RSTS 5K-RKWTS 5K-916/	630 V	6 kV	1,50 mm <sup>2</sup>
934-853-159	RSTS 5K-RKTS 5K-910/0,	630 V	6,0 kV	1,50 mm <sup>2</sup>
934-853-160	RSTS 5K-RKTS 5K-910/3,	630 V	6,0 kV	1,50 mm <sup>2</sup>
934-853-161	RSTS 5K-RKTS 5K-910/7,	630 V	6,0 kV	1,50 mm <sup>2</sup>
934-853-162	RSTS 5K-RKTS 5K-910/1	630 V	6,0 kV	1,50 mm <sup>2</sup>
934-853-163	RST 5L-RKT 5L-949/0,3 M	63 V	1,5 kV	1,50 mm <sup>2</sup>
934-853-164	RST 5L-RKT 5L-949/0,6 M	63 V	1,5 kV	1,50 mm <sup>2</sup>
934-853-165	RST 5L-RKT 5L-949/1 M	63 V	1,5 kV	1,50 mm <sup>2</sup>
934-853-166	RST 5L-RKT 5L-949/2 M	63 V	1,5 kV	1,50 mm <sup>2</sup>
934-853-167	RST 5L-RKT 5L-949/5 M	63 V	1,5 kV	1,50 mm <sup>2</sup>
934-853-168	RST 5L-RKT 5L-949/10 M	63 V	1,5 kV	1,50 mm <sup>2</sup>
934-853-170	RST 5L-RKWT 5L-949/0,3	63 V	1,5 kV	1,50 mm <sup>2</sup>
934-853-171	RST 5L-RKWT 5L-949/0,6	63 V	1,5 kV	1,50 mm <sup>2</sup>
934-853-172	RST 5L-RKWT 5L-949/1	63 V	1,5 kV	1,50 mm <sup>2</sup>
934-853-173	RST 5L-RKWT 5L-949/2	63 V	1,5 kV	1,50 mm <sup>2</sup>
934-853-174	RST 5L-RKWT 5L-949/5	63 V	1,5 kV	1,50 mm <sup>2</sup>
934-853-175	RST 5L-RKWT 5L-949/10	63 V	1,5 kV	1,50 mm <sup>2</sup>
934-853-301	RST 4S-RKT 4S-703/2 M	630 V	6 kV	1,50 mm <sup>2</sup>
934-853-302	RST 4S-RKT 4S-703/5 M	630 V	6 kV	1,50 mm <sup>2</sup>
934-853-303	RST 4S-RKT 4S-703/10 M	630 V	6 kV	1,50 mm <sup>2</sup>
934-853-304	RST 4S-RKT 4S-733/2 M	630 V	6 kV	1,50 mm <sup>2</sup>
934-853-305	RST 4S-RKT 4S-733/5 M	630 V	6 kV	1,50 mm <sup>2</sup>
934-853-306	RST 4S-RKT 4S-733/10 M	630 V	6 kV	1,50 mm <sup>2</sup>
934-853-307	RST 4S-RKWT 4S-703/2	630 V	6 kV	1,50 mm <sup>2</sup>
934-853-308	RST 4S-RKWT 4S-703/5	630 V	6 kV	1,50 mm <sup>2</sup>
934-853-309	RST 4S-RKWT 4S-703/10	630 V	6 kV	1,50 mm <sup>2</sup>
934-853-310	RST 4S-RKWT 4S-733/2	630 V	6 kV	1,50 mm <sup>2</sup>
934-853-311	RST 4S-RKWT 4S-733/5	630 V	6 kV	1,50 mm <sup>2</sup>
934-853-312	RST 4S-RKWT 4S-733/10	630 V	6 kV	1,50 mm <sup>2</sup>
934-853-313	RST 4T-RKT 4T-723/0,3 M	63 V	1,5 kV	1,50 mm <sup>2</sup>
934-853-314	RST 4T-RKT 4T-723/0,6 M	63 V	1,5 kV	1,50 mm <sup>2</sup>
934-853-315	RST 4T-RKT 4T-723/1 M	63 V	1,5 kV	1,50 mm <sup>2</sup>
934-853-316	RST 4T-RKT 4T-723/2 M	63 V	1,5 kV	1,50 mm <sup>2</sup>
934-853-317	RST 4T-RKT 4T-723/5 M	63 V	1,5 kV	1,50 mm <sup>2</sup>
934-853-318	RST 4T-RKT 4T-723/10 M	63 V	1,5 kV	1,50 mm <sup>2</sup>
934-853-325	RST 4T-RKWT 4T-723/0,3	63 V	1,5 kV	1,50 mm <sup>2</sup>
934-853-326	RST 4T-RKWT 4T-723/0,6	63 V	1,5 kV	1,50 mm <sup>2</sup>
934-853-327	RST 4T-RKWT 4T-723/1	63 V	1,5 kV	1,50 mm <sup>2</sup>
934-853-328	RST 4T-RKWT 4T-723/2	63 V	1,5 kV	1,50 mm <sup>2</sup>
934-853-329	RST 4T-RKWT 4T-723/5	63 V	1,5 kV	1,50 mm <sup>2</sup>
934-853-330	RST 4T-RKWT 4T-723/10	63 V	1,5 kV	1,50 mm <sup>2</sup>
934-853-337	RST 5K-RKT 5K-911/2 M	630 V	6 kV	1,50 mm <sup>2</sup>
934-853-338	RST 5K-RKT 5K-911/5 M	630 V	6 kV	1,50 mm <sup>2</sup>
934-853-339	RST 5K-RKT 5K-911/10 M	630 V	6 kV	1,50 mm <sup>2</sup>
934-853-340	RST 5K-RKT 5K-735/2 M	630 V	6 kV	1,50 mm <sup>2</sup>
934-853-341	RST 5K-RKT 5K-735/5 M	630 V	6 kV	1,50 mm <sup>2</sup>

934-853-342	RST 5K-RKT 5K-735/10 M	630 V	6 kV	1,50 mm <sup>2</sup>
934-853-343	RST 5K-RKT 5K-736/2 M	630 V	6 kV	1,50 mm <sup>2</sup>
934-853-344	RST 5K-RKT 5K-736/5 M	630 V	6 kV	1,50 mm <sup>2</sup>
934-853-345	RST 5K-RKT 5K-736/10 M	630 V	6 kV	1,50 mm <sup>2</sup>
934-853-346	RST 5K-RKWT 5K-911/2	630 V	6 kV	1,50 mm <sup>2</sup>
934-853-347	RST 5K-RKWT 5K-911/5	630 V	6 kV	1,50 mm <sup>2</sup>
934-853-348	RST 5K-RKWT 5K-911/10	630 V	6 kV	1,50 mm <sup>2</sup>
934-853-349	RST 5K-RKWT 5K-735/2	630 V	6 kV	1,50 mm <sup>2</sup>
934-853-350	RST 5K-RKWT 5K-735/5	630 V	6 kV	1,50 mm <sup>2</sup>
934-853-351	RST 5K-RKWT 5K-735/10	630 V	6 kV	1,50 mm <sup>2</sup>
934-853-352	RST 5K-RKWT 5K-736/2	630 V	6 kV	1,50 mm <sup>2</sup>
934-853-353	RST 5K-RKWT 5K-736/5	630 V	6 kV	1,50 mm <sup>2</sup>
934-853-354	RST 5K-RKWT 5K-736/10	630 V	6 kV	1,50 mm <sup>2</sup>
934-853-381	RSTS 4S-RKTS 4S-700/2	630 V	6 kV	1,50 mm <sup>2</sup>
934-853-382	RSTS 4S-RKTS 4S-700/5	630 V	6 kV	1,50 mm <sup>2</sup>
934-853-383	RSTS 4S-RKTS 4S-700/1	630 V	6 kV	1,50 mm <sup>2</sup>
934-853-384	RSTS 4S-RKTS 4S-915/2	630 V	6 kV	1,50 mm <sup>2</sup>
934-853-385	RSTS 4S-RKTS 4S-915/5	630 V	6 kV	1,50 mm <sup>2</sup>
934-853-386	RSTS 4S-RKTS 4S-915/1	630 V	6 kV	1,50 mm <sup>2</sup>
934-853-387	RSTS 4S-RKWTS 4S-700/	630 V	6 kV	1,50 mm <sup>2</sup>
934-853-388	RSTS 4S-RKWTS 4S-700/	630 V	6 kV	1,50 mm <sup>2</sup>
934-853-389	RSTS 4S-RKWTS 4S-700/	630 V	6 kV	1,50 mm <sup>2</sup>
934-853-390	RSTS 4S-RKWTS 4S-915/	630 V	6 kV	1,50 mm <sup>2</sup>
934-853-391	RSTS 4S-RKWTS 4S-915/	630 V	6 kV	1,50 mm <sup>2</sup>
934-853-392	RSTS 4S-RKWTS 4S-915/	630 V	6 kV	1,50 mm <sup>2</sup>
934-853-393	RSTS 4T-RKTS 4T-722/0,	63 V	1,5 kV	1,50 mm <sup>2</sup>
934-853-394	RSTS 4T-RKTS 4T-722/0,	63 V	1,5 kV	1,50 mm <sup>2</sup>
934-853-395	RSTS 4T-RKTS 4T-722/1	63 V	1,5 kV	1,50 mm <sup>2</sup>
934-853-396	RSTS 4T-RKTS 4T-722/2	63 V	1,5 kV	1,50 mm <sup>2</sup>
934-853-397	RSTS 4T-RKTS 4T-722/5	63 V	1,5 kV	1,50 mm <sup>2</sup>
934-853-398	RSTS 4T-RKTS 4T-722/10	63 V	1,5 kV	1,50 mm <sup>2</sup>
934-853-405	RSTS 4T-RKWTS 4T-722/	63 V	1,5 kV	1,50 mm <sup>2</sup>
934-853-406	RSTS 4T-RKWTS 4T-722/	63 V	1,5 kV	1,50 mm <sup>2</sup>
934-853-407	RSTS 4T-RKWTS 4T-722/	63 V	1,5 kV	1,50 mm <sup>2</sup>
934-853-408	RSTS 4T-RKWTS 4T-722/	63 V	1,5 kV	1,50 mm <sup>2</sup>
934-853-409	RSTS 4T-RKWTS 4T-722/	63 V	1,5 kV	1,50 mm <sup>2</sup>
934-853-410	RSTS 4T-RKWTS 4T-722/	63 V	1,5 kV	1,50 mm <sup>2</sup>
934-853-417	RSTS 5K-RKTS 5K-910/2	630 V	6 kV	1,50 mm <sup>2</sup>
934-853-418	RSTS 5K-RKTS 5K-910/5	630 V	6 kV	1,50 mm <sup>2</sup>
934-853-419	RSTS 5K-RKTS 5K-910/1	630 V	6 kV	1,50 mm <sup>2</sup>
934-853-420	RSTS 5K-RKTS 5K-916/2	630 V	6 kV	1,50 mm <sup>2</sup>
934-853-421	RSTS 5K-RKTS 5K-916/5	630 V	6 kV	1,50 mm <sup>2</sup>
934-853-422	RSTS 5K-RKTS 5K-916/1	630 V	6 kV	1,50 mm <sup>2</sup>
934-853-423	RSTS 5K-RKWTS 5K-910/	630 V	6 kV	1,50 mm <sup>2</sup>
934-853-424	RSTS 5K-RKWTS 5K-910/	630 V	6 kV	1,50 mm <sup>2</sup>
934-853-425	RSTS 5K-RKWTS 5K-910/	630 V	6 kV	1,50 mm <sup>2</sup>
934-853-426	RSTS 5K-RKWTS 5K-916/	630 V	6 kV	1,50 mm <sup>2</sup>
934-853-427	RSTS 5K-RKWTS 5K-916/	630 V	6 kV	1,50 mm <sup>2</sup>
934-853-428	RSTS 5K-RKWTS 5K-916/	630 V	6 kV	1,50 mm <sup>2</sup>