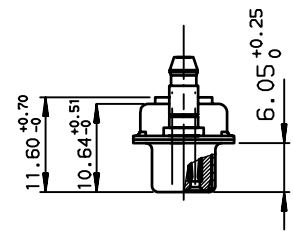
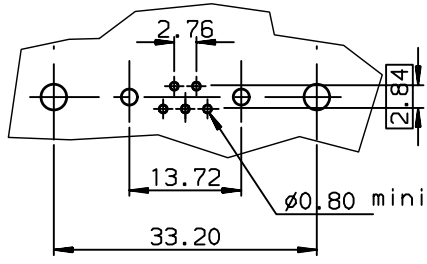


LAYOUT DIMENSIONS (after plating)
CONNECTOR SIDE VIEW



TIN LEAD PART NUMBER

DAL7W2S300G30	M3
PART NUMBER	Threaded A

LEAD FREE PART NUMBER

DAL7W2S300G30LF	M3
PART NUMBER	Threaded A

GENERAL CHARACTERISTICS AND ROHS INFORMATIONS:
SEE DRAWING C01-8639-0000

European Views

www.fciconnect.com		surface ISO 1302	tolerance std ISO 406 ISO 1101	projection mm	mm	
		TOLERANCES UNLESS OTHERWISE SPECIFIED				Scale 1.5
Dr	JARRY	1994/08/30	ANGULAR			
Eng	PESSON	1994/08/30	LINEAR	0.XX	±0.1	ECN LS06-0095
Chr	LEGARE	1994/08/30	0.XX' ±2'	0.XXX	±0.1	Spec ref -
Appr	LEGARE	1994/08/30	Product family	D-SUB		
		SOCKET CONNECTOR WITH TWO POWERS CONTACTS			title C01-8639-0557	Rev. H
catalog no				CUSTOMER	sheet 1 of 1	

rev	ecn no	dr	date
F	-	BAR	2004/02/27
G	LS05-001	MPE	2005/03/07
H	LS06-0095	LGO	2006/07/19
-	-	-	-
-	-	-	-
-	-	-	-



Copyright FCI.