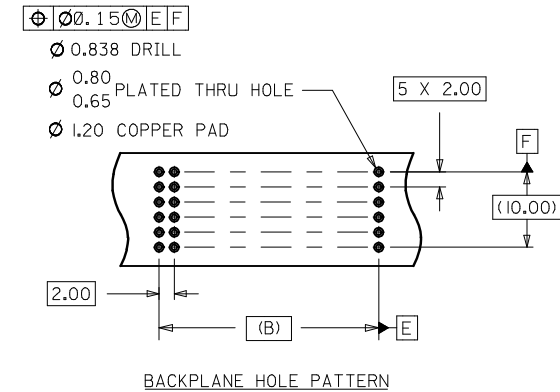
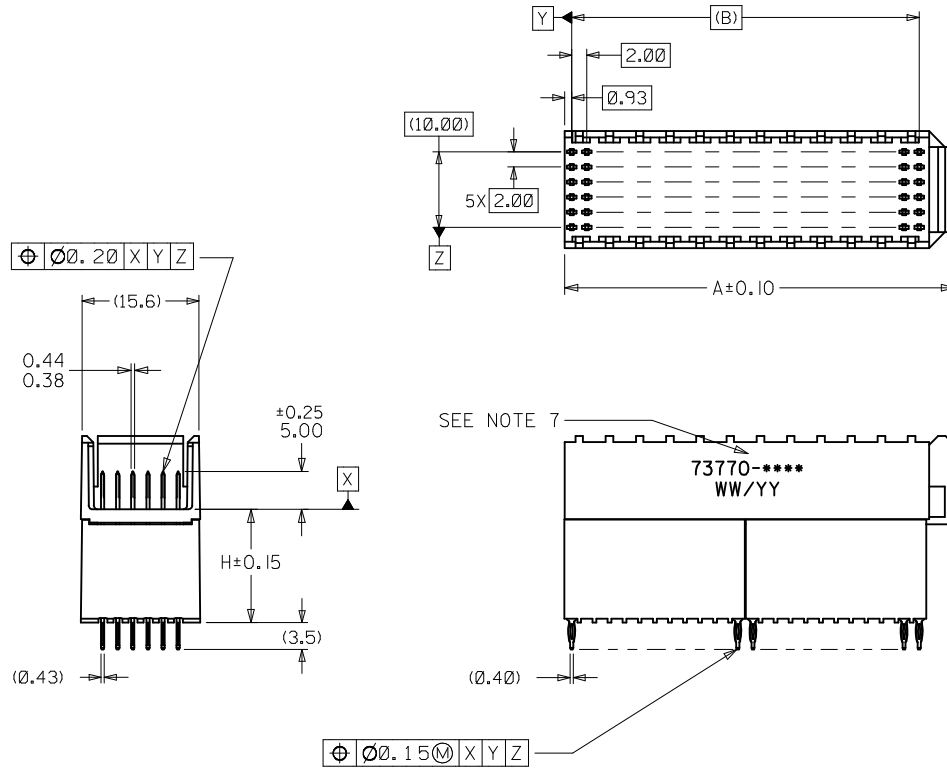


ASSEMBLY P/N	TOTAL NUMBER OF SIGNAL CONTACTS	DIM "A"	DIM "B"	DIM "H"	PACKAGING SPECIFICATION
73770-0109	72	27.6	22.00	15.05	PK-70873-1873
73770-0209	72	27.6	22.00	6.05	PK-70873-0875
73770-0309	72	27.6	22.00	10.05	PK-70873-0871
73770-1109	144	51.6	46.00	15.05	PK-70873-1873
73770-1209	144	51.6	46.00	6.05	PK-70873-0875
73770-1309	144	51.6	46.00	10.05	PK-70873-0871

- NOTES:
1. MATERIALS: HOUSING-LIQUID CRYSTAL POLYMER (LCP), GLASS-FILLED UL 94V-0, COLOR: BLACK, TERMINAL: PHOSPHOR BRONZE
 2. FINISH: SELECTIVE GOLD (Au) IN CONTACT AREA, 0.76 MICROMETER MINIMUM THICKNESS; SELECTIVE TIN (Sn) ON TAILS, 0.38 MICROMETER MINIMUM THICKNESS, NICKEL (Ni) UNDERPLATE OVERALL.
 3. THIS PART CONFORMS TO MOLEX PRODUCT SPECIFICATION: PS-73780-999.
 4. DIMENSIONS ARE IN MILLIMETERS
 5. RECOMMENDED PCB THICKNESS: 2.50 MINIMUM
 6. SEE TABLE FOR PACKAGING SPECIFICATION.
 7. PART MARKED WITH PART NUMBER AND DATE CODE APPROXIMATELY WHERE SHOWN.



REV	DESCRIPTION	QUALITY SYMBOLS	GENERAL TOLERANCES (UNLESS SPECIFIED)		DIMENSION STYLE		SCALE	DESIGN UNITS	THIRD ANGLE PROJECTION
			mm	INCH	MM ONLY	DATE			
B1	CHG 15mm PKG EC NO: UCP2013-1282 DRWN:DMORGAN 2012/10/01 CHKD: APPR:SMILLER 2012/10/02	▽=0 ▽=0 ▽=0	4 PLACES ± ---	± ---	DRAWN BY	DATE	TITLE	SALES ASSY HDM BACKPLANE STACKING MODULE CLOSED END OPTION PRESSFIT	molex
			3 PLACES ± ---	± ---	MIBARRA	05/07/06	SD-73770-002		
			2 PLACES ± 0.05	± ---	CHECKED BY	DATE			
			1 PLACE ± 0.10	± ---	BSMART	05/07/06			
			0 PLACE ± ---	± ---	APPROVED BY	DATE			
					SMILLER	2012/09/18			
					MATERIAL NO. SEE TABLE		DOCUMENT NO. SD-73770-002		SHEET NO. 1 OF 1
					DRAFT WHERE APPLICABLE MUST REMAIN WITHIN DIMENSIONS				
					ANGULAR ±1/2°				
					THIS DRAWING CONTAINS INFORMATION THAT IS PROPRIETARY TO MOLEX INCORPORATED AND SHOULD NOT BE USED WITHOUT WRITTEN PERMISSION				