

MATERIALS AND FINISHES

BODY: BRASS OR ZINC
PLATED: NICKEL

REAR BODY: BRASS OR ZINC
PLATED: NICKEL

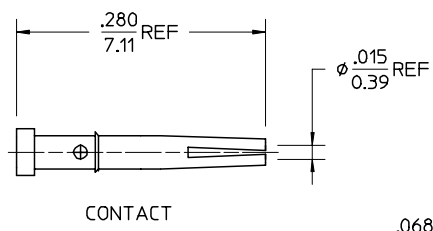
CENTER CONTACT: BeCu
PLATED: GOLD

OUTER CONTACT: BRASS OR BeCu
PLATED: NICKEL

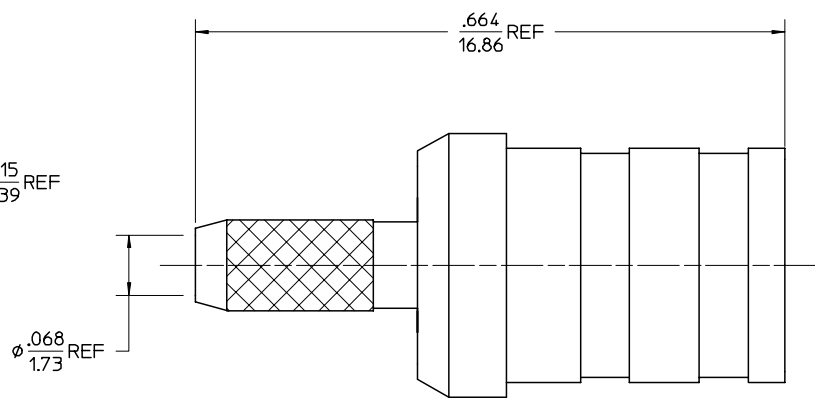
RETAINING RING: BeCu (FOR BRASS O.C. ONLY)
PLATED: NICKEL

CRIMP TUBE: BRASS
PLATED: NICKEL

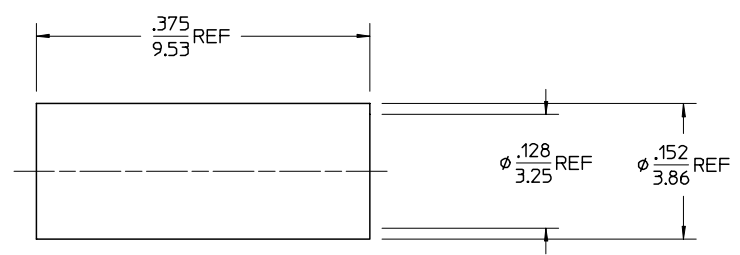
INSULATOR: TEFLON OR POLYPROPYLENE



CONTACT



SMB PLUG



CRIMP TUBE

PART # 73404-0230

AS-89678-1300	CABLE ASSEMBLY INSTRUCTIONS
PS-89675-2990	INTERFACE SPECIFICATION
PS-89675-3280	ELECTRO/MECH. PERFORMANCE

SPECIFICATION	DESCRIPTION
CHG: ADDED AS-89678-1300 EC NO. URF-0968 DRWN: TEF 02/01/01 CHK: SSS 02/01/01 APPR: GMH 02/01/01 CHG: INTERFACE SPEC PS-89675-2990 WAS MIL-STD-348A FIG 311-2 ADD BODY/REAR BODY MATERIAL OPTION: ZINC; ADD OPTION FOR BeCu OUTER CONTACT ADD "OR POLYPROPYLENE" ON INS. "FOR BRASS OC ONLY" ON RETAINING RING	EC NO. URF-0871 DRWN: LMB 10/26/00 CHK: GMH 10/26/00 APPR: GMH 10/26/00 CHG: ADD PRODUCT SPEC PS-89675-3280
EC NO. URF-0865 DRWN: LMB 10/17/00 CHK: GMH 10/17/00 APPR: GMH 10/17/00	DESCRIPTION

UNLESS OTHERWISE SPECIFIED DIMS ARE INCHES AND ANGLES ARE DEGREES.
 1. ✓ 63 ALL OVER.
 2. NO CHATTER OR NON-UNIFORM SURFACE FINISH ALLOWED.
 3. PARTS TO BE FREE OF BURRS & SHARP EDGES .005 MAX BREAK.
 4. EXTERNAL THREADS TO BE ROLLED OR SINGLE POINT.
 5. DIAMETERS TO BE CONCENTRIC WITHIN .003 TIR.

QUALITY SYMBOLS
MAJOR ▽*
CRITICAL ▽C*

GENERAL TOLERANCES: (UNLESS SPECIFIED)	
4 PLACES	± .0005
3 PLACES	± .005
2 PLACES	± .01
1 PLACE	± .1
ANGULAR: ±2°	
DRAFT WHERE APPLICABLE MUST REMAIN WITHIN DIMENSIONS	

SCALE	DESIGN UNITS
---	<input type="checkbox"/> mm <input checked="" type="checkbox"/> INCH
DRAWN BY & DATE LMB 08/22/00	
CHECKED BY & DATE TEF 08/22/00	
APPROVED BY & DATE GMH 08/22/00	
CAD FILENAME	

THIRD ANGLE PROJECTION		DIMENSIONS: <input type="checkbox"/> mm <input checked="" type="checkbox"/> INCH <input type="checkbox"/> mm ONLY		1	A3
TITLE: SMB PLUG, 75 OHM, AIR DIELECTRIC FOR RG179 CABLE SMB-PC		REVISE ON CAD ONLY		SHT	REV
MOLEX MOLEX INCORPORATED		MATERIAL NO. SEE NOTE		DRAWING NO. SD-73404-023	
THIS DRAWING CONTAINS INFORMATION THAT IS PROPRIETARY TO MOLEX INCORPORATED AND SHOULD NOT BE USED WITHOUT WRITTEN PERMISSION.		SHEET NO. 1 of 1		SIZE B	