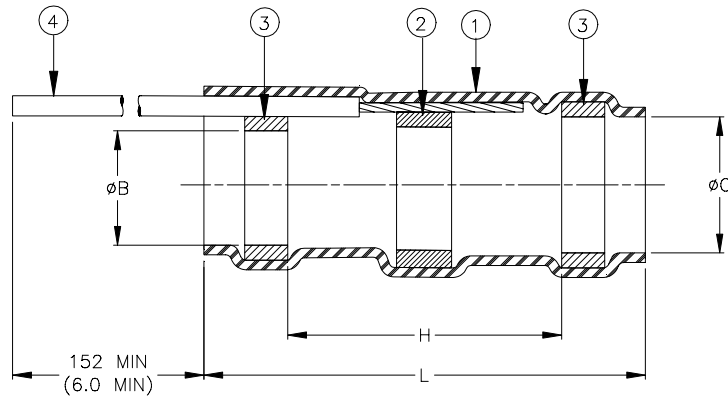


## SPECIFICATION CONTROL DRAWING



| Product Revision |             | Component Dimensions             |                 |                 |                 |                 | Cable Dimensions |                 |                 |  |
|------------------|-------------|----------------------------------|-----------------|-----------------|-----------------|-----------------|------------------|-----------------|-----------------|--|
| Product Name     | Ident. Code | $L \pm 1.75$<br>( $L \pm 0.07$ ) | H<br>min        | $\phi B$<br>min | $\phi C$<br>min | $\phi D$<br>max | $\phi E$<br>max  | $\phi F$<br>min | $\phi G$<br>max |  |
| S02-17-R-XX      | * SZ2A26    | 16.50<br>(0.650)                 | 8.25<br>(0.325) | 2.65<br>(0.105) | 3.68<br>(0.145) | 2.65<br>(0.105) | 3.68<br>(0.145)  | 1.40<br>(0.055) | 0.72<br>(0.030) |  |
| S02-18-R-XX      | * SZ3A26    | 16.50<br>(0.650)                 | 8.25<br>(0.325) | 4.30<br>(0.170) | 5.08<br>(0.200) | 4.30<br>(0.170) | 5.08<br>(0.200)  | 2.15<br>(0.085) | 1.25<br>(0.050) |  |
| S02-20-R-XX      | * SZ5A26    | 19.10<br>(0.750)                 | 8.25<br>(0.325) | 7.00<br>(0.275) | 7.60<br>(0.300) | 7.00<br>(0.275) | 7.60<br>(0.300)  | 4.30<br>(0.170) | 2.50<br>(0.100) |  |

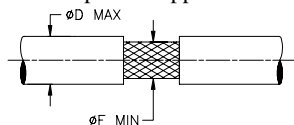
\* Consult Raychem for individual product revision. Contains more than 1 part name.

### MATERIALS

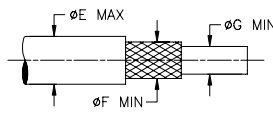
- INSULATION SLEEVE: Heat-shrinkable, transparent blue, radiation cross-linked polyvinylidene fluoride.
- SOLDER PREFORM WITH FLUX AND THERMAL INDICATOR:  
SOLDER: TYPE Sn63 per ANSI J-STD-006.  
FLUX: TYPE ROL1 per ANSI-J-STD-004.  
THERMAL INDICATOR: Color change violet to colorless.
- SEALING RINGS: Environment resistant thermoplastic. Color: blue.
- PRE-INSTALLED LEAD: MIL-W-22759/32-26-XX\* (Raychem 55A0111-26-XX\*)  
\*XX: Part name and lead callout shall be replaced with lead color designation per MIL-STD-681.  
Colors available: solid and with single stripe.

### APPLICATION

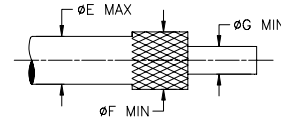
- These parts are designed to provide an environment protected shield termination on cables, rated for 105°C minimum, meeting the dimensional criteria listed and having tin or silver plated shields and insulation compatible with the insert material.  
For compatible insulations, see SAE-AS83519/2 or consult Raychem.
- When installed per Raychem process standard RCPS-100-70, assemblies will meet those requirements of Raychem Specification RT-1404 and SAE-AS83519/2.
- For assembly information, refer to Raychem document RCPS-100-70.
- Parts shall be marked with identification code per table.
- For best results, prepare the cable as shown:
  - Strip length of shield: 6.35 – 8.25 (0.250 - 0.325)
  - Use methods (a) or (b) with cable rated for 125°C and above. Use method (c) for cables rated for 105°C and cable with spiral wrapped shields.



a) Window Strip



b) End Strip



c) End Strip with Fold Back

|   |  |                                     |  |  |  |                        |  |                  |  |
|---|--|-------------------------------------|--|--|--|------------------------|--|------------------|--|
| <b>tyco / Electronics / Raychem</b><br>307 Constitution Drive Menlo Park, CA 94025, USA                 |  | <b>Wire and Harnessing Products</b> |  | TITLE:<br><b>SOLDERSLEEVE SHIELD TERMINATION ENVIRONMENT RESISTANT WITH LEAD</b>   |  |                        |  |                  |  |
| Unless otherwise specified dimensions are in millimeters.<br>Inches dimensions are in between brackets. |  |                                     |  | DOCUMENT NO.: <b>S02-17/-18/-20-R-XX</b>   |  |                        |  |                  |  |
| TOLERANCES:<br>0.00 N/A<br>0.0 N/A<br>0 N/A   |  | ANGLES: N/A<br>ROUGHNESS IN MICRON  |  | Tyco Electronics reserves the right to amend this drawing at any time. Users should evaluate the suitability of the product for their application. |  | DCR NUMBER:<br>D010447 |  | REPLACES:<br>N/A |  |
| DRAWN BY:<br>M. FORONDA   |  | DATE:<br>July 31, 2001              |  | PROD. REV.<br>SEE TABLE  |  | DOC ISSUE:<br>1        |  | SCALE:<br>None   |  |
|   |  |                                     |  |  |  | SIZE:<br>A             |  | SHEET:<br>1 of 1 |  |

If this document is printed it becomes uncontrolled. Check for the latest revision.