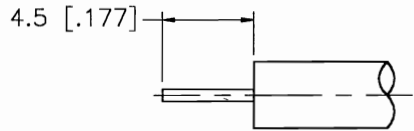
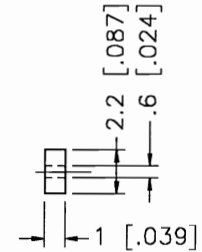
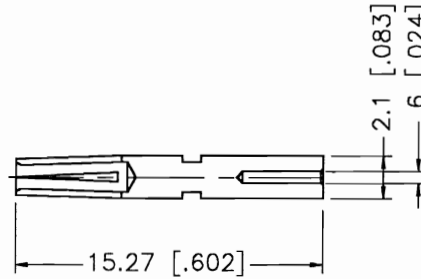
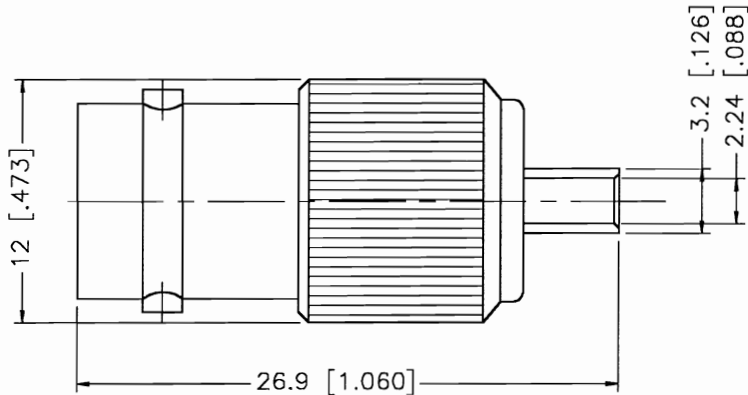



REV.	DATE	DESCRIPTION
A	11/28/99	UPDATE DESCRIPTION



RECOMMENDED  
CABLE STRIPPING DIM'S



DESCRIPTION	MATERIAL	FINISH	UNLESS OTHERWISE SPECIFIED DIMENSIONS ARE IN MILLIMETERS	APPROVALS	DATE	 <b>Connex</b> Connector Corporation				
1 BODY	BRASS	NICKEL	<small>DIMENSIONS IN [ ] ARE IN INCHES FOR CUSTOMER REFERENCE ONLY</small>  <small>UNLESS OTHERWISE SPECIFIED TOLERANCES FOR MILLIMETERS ARE:</small> 0.5-6 = ± 0.2 6-30 = ± 0.4 30-120 = ± 0.6 120-315 = ± 1 315-1000 = ± 1.6 1000-2000 = ± 2.4	DRAWN G.R.S.	11/28/99					<b>TITLE</b> BNC CRIMP JACK (FOR .085 SEMI RIGID CABLE)
2 BARREL	BRASS	GOLD		CHECKED			SIZE A	FSCM NO. 99001	DWG. NO. 112615.DWG	
3 INSULATOR	TEFLON	NATURAL		ISSUED			SCALE NA	PART NO. 112615	SHEET 1 OF 1	
4 CONTACT PIN	PHOS. BRONZE	GOLD								
5										
6										
7										
8				DO NOT SCALE DRAWING						