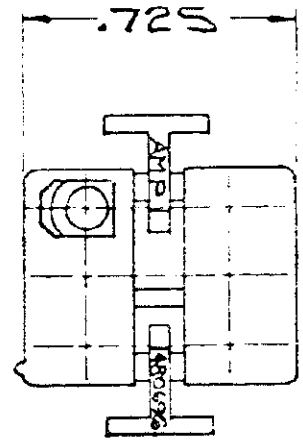
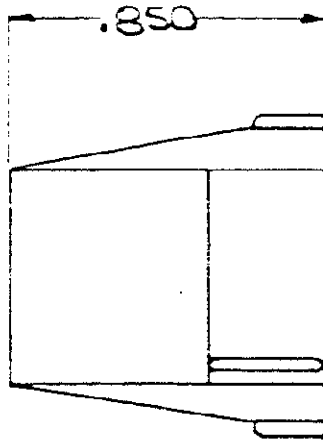
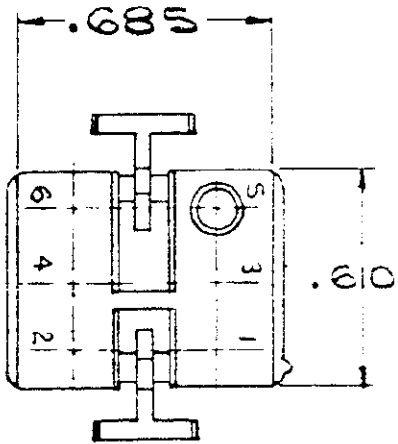


DRAWING MADE IN AMERICAN PROJECTION

102

NUMBER
480696

S



- 1. TO BE USED WITH DUAL LANCE MATE-N-LOK SOCKETS.
- 2 TO BE USED WITH CAP 480697.

HOUSING NO.	MATERIAL	COLOR
1-480696-0	NYLON	NATURAL

DIMENSIONS IN INCHES. DO NOT SCALE PRINT.

UNPUBLISHED COPY NOT TO BE REPRODUCED NOR PUBLISHED WITHOUT PERMISSION

© 1972 BY AMPERCO CORP. ALL RIGHTS RESERVED. AMP PRODUCTS COVERED BY PATENTS AND/OR PATENTS PENDING.				CUSTOMER COPY REFERENCE ONLY	
B	OBSOLETE 1-1/1-9 PER CM-473	RS	7/2/86	AMP INCORPORATED HARRISBURG, PENNA.	
A ₁	RESTORED	RS	8-7-85		
A	RELEASED	AMP 993	66/81	CLASS .084 SOCKET HOUSING	
LTR	REVISION RECORD	ECN	DR	DATE	TYPE
DR	1-2-14/1-1-73	DE			MOTOR MOUNT
CHK	1-3-73	APP	1-3-73		
WIRE — RANGE — INSULATION				TOLERANCE EXCEPT AS NOTED	
— — —				= .015 = 1°	
NAME				SCALE	LOC
6 CIRCUIT MATE-N-LOK PLUG				2-1	CM: A
				NO	REV
				480696	B