

Pd-Ni  
PLATING

- NOTES:
- MATERIALS: HOUSING - LIQUID CRYSTAL POLYMER (ILCP) GLASS-FILLED, UL94V-0  
TERMINALS - HIGH PERFORMANCE COPPER ALLOY
  - FINISH: 5 MICROINCH MINIMUM GOLD FLASH OVER 20 MICROINCH MINIMUM Pd-Ni IN CONTACT AREA, SELECTIVE TIN ON PCB TAILS, NICKEL OVERALL.
  - REFER TO MOLEX PRODUCT SPECIFICATION PS-76060-999 FOR PERFORMANCE SPECIFICATIONS AND ADDITIONAL PCB INFORMATION.
  - THIS PART CONFORMS TO CLASS B REQUIREMENTS OF MOLEX COSMETIC SPEC PS-45499-002.
  - PACKAGE PER: PK-70873-759.
  - SEE SHEETS 2 & 3 FOR PART NUMBERS AND BOARD RELATIONSHIPS.
  - FOR GROUNDED GUIDE PINS USE DIA. 3.56 +/-0.08 (PTH) DIA. 3.66 (DRILL) AND DIA 6.5 (PAD).
  - MATES WITH IMPACT DC SERIES NO. 76060.
  - KEEP OUT ZONE FOR BP HOUSING LENGTH INCLUDES AN ADDITIONAL 1.0MM TO ACCOMMODATE FOR SPACE REQUIRED BY DC FRONT HOUSING.
  - REFER TO MOLEX PCB ROUTING GUIDE AS-76060-990 FOR ANTIPAD AND ROUTING RECOMMENDATIONS.
  - CONNECTORS SUPPLIED WITH A 2-56 UNC-2A SCREW.
  - \*THESE DIMENSIONS REPRESENT THE AREA NEEDED TO ACCOMMODATE CONNECTOR INSERTION AND REPAIR ON THE PC BOARD. THIS IS REFERRED TO AS THE "CONNECTOR KEEP OUT ZONE" AND DOES NOT REPRESENT THE ACTUAL PERIMETER OF THE CONNECTOR, WHEN LAYING OUT A PC BOARD FOR CONNECTORS STACK TOGETHER, USE A 1.9mm PROGRESSION.\*

|  |                                      |  |         |   |                           |                                |                        |                        |
|--|--------------------------------------|--|---------|---|---------------------------|--------------------------------|------------------------|------------------------|
| INITIAL RELEASE<br>IEC NO: UCP2016-2332<br>DRAWN BY: SVANG01<br>CHECKED BY: CHYD/MWOLFE<br>APPROVED BY: APPR/SMILLER<br>DATE: 2015/12/09<br>DATE: 2015/12/09<br>DATE: 2015/12/17 | QUALITY SYMBOLS<br>∇=0<br>∇=0<br>∇=0 | GENERAL TOLERANCES (UNLESS SPECIFIED)  |         | DIMENSION STYLE<br>MM ONLY  |                           | SCALE<br>4:1                   | DESIGN UNITS<br>METRIC | THIRD ANGLE PROJECTION |
|  |                                      | 4 PLACES ±--- ±---<br>3 PLACES ±--- ±---<br>2 PLACES ±0.13 ±---<br>1 PLACE ±0.25 ±---<br>0 PLACE ± ± | mm INCH | DRAWN BY: SVANG01<br>DATE: 2015/12/09<br>CHECKED BY: MWOLFE<br>DATE: 2015/12/09<br>APPROVED BY: SMILLER<br>DATE: 2015/12/17 | MATERIAL NO.<br>SEE TABLE | DOCUMENT NO.<br>RSD-473430-002 | SHEET NO.<br>1 OF 3    |                        |

THIS DRAWING CONTAINS INFORMATION THAT IS PROPRIETARY TO MOLEX INCORPORATED AND SHOULD NOT BE USED WITHOUT WRITTEN PERMISSION

# PART NUMBER LOGIC

173430-\*\*\*\*

MODULE TYPE

- 3 = GUIDE LEFT, TIN
- 7 = GUIDE LEFT END WALL, TIN

# OF COLUMNS

- 1 = 10 COL
- 2 = 12 COL
- 6 = 16 COL
- 7 = 14 COL

KEY ORIENTATION

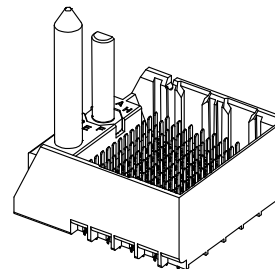
- 0 = NO KEY
- 1 = A
- 2 = B
- 3 = C
- 4 = D
- 5 = E
- 6 = F
- 7 = G
- 8 = H

PIN LENGTH (P)

- 3 = 4.50 (SHORT COMPLIANT, 0.46±0.05 PTH)
- 4 = 4.90 (SHORT COMPLIANT, 0.46±0.05 PTH)
- 5 = 5.50 (SHORT COMPLIANT, 0.46±0.05 PTH)
- 6 = 4.50 (MICRO COMPLIANT, 0.39±0.05 PTH)
- 7 = 4.90 (MICRO COMPLIANT, 0.39±0.05 PTH)
- 8 = 5.50 (MICRO COMPLIANT, 0.39±0.05 PTH)

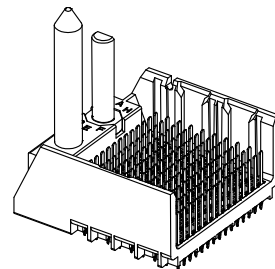
# PART NUMBER TABLE

| MATERIAL NUMBER | # OF COLUMNS | # OF DIFF PAIR | DIM "A" | DIM "B" | GUIDE LEFT<br>END WALL<br>OPTION |
|-----------------|--------------|----------------|---------|---------|----------------------------------|
| 173430-#1**     | 10           | 50             | 26.9    | 17.10   |                                  |
| 173430-#2**     | 12           | 60             | 30.7    | 20.90   |                                  |
| 173430-#7**     | 14           | 70             | 34.5    | 24.70   |                                  |
| 173430-#6**     | 16           | 80             | 38.3    | 28.50   |                                  |



GUIDE LEFT  
END WALL  
OPTION

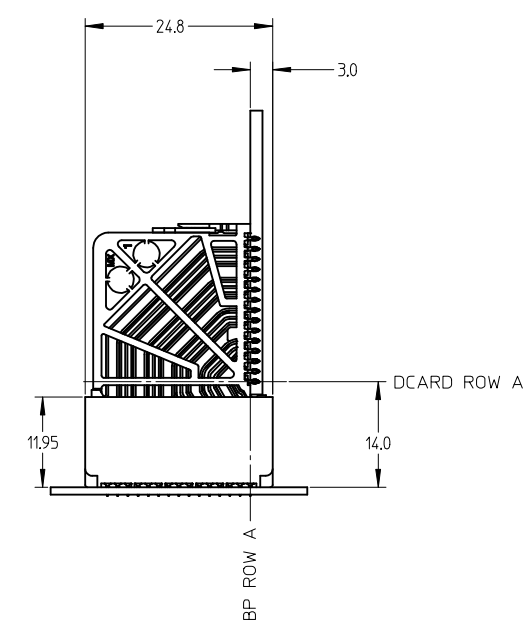
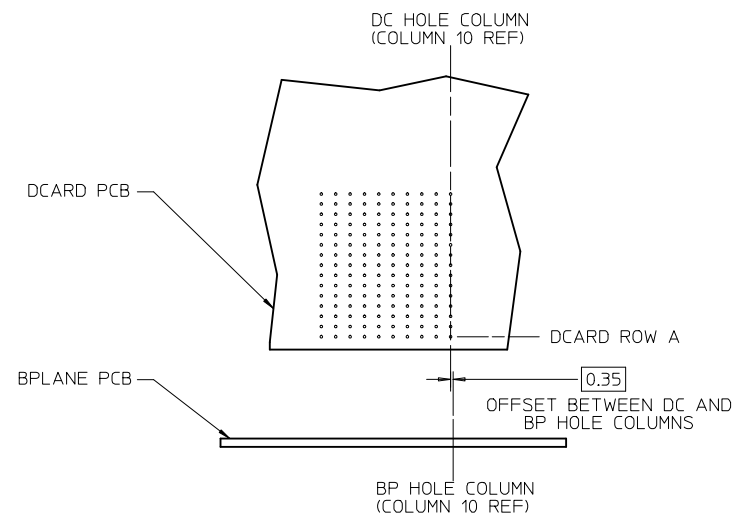
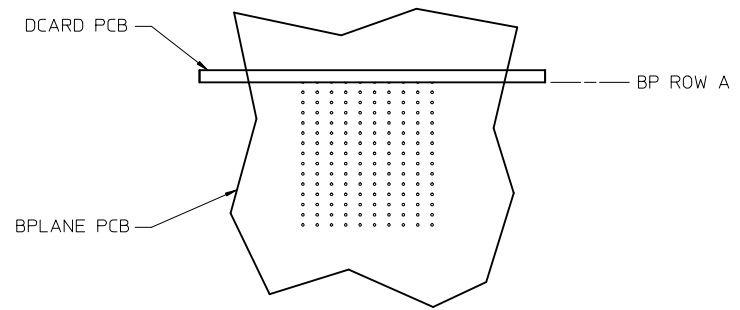
| MATERIAL NUMBER | # OF COLUMNS | # OF DIFF PAIR | DIM "A" | DIM "B" | GUIDE LEFT<br>OPEN WALL<br>OPTION |
|-----------------|--------------|----------------|---------|---------|-----------------------------------|
| 173430-#1**     | 10           | 50             | 25.5    | 17.10   |                                   |
| 173430-#2**     | 12           | 60             | 29.3    | 20.90   |                                   |
| 173430-#7**     | 14           | 70             | 33.1    | 24.70   |                                   |
| 173430-#6**     | 16           | 80             | 36.9    | 28.50   |                                   |



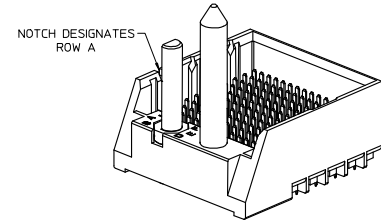
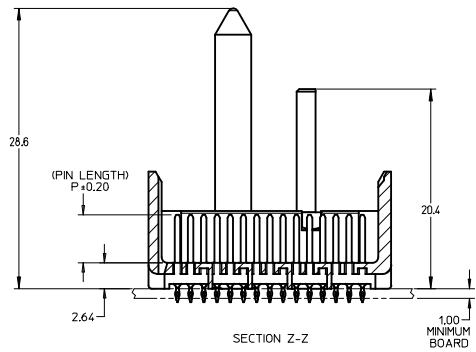
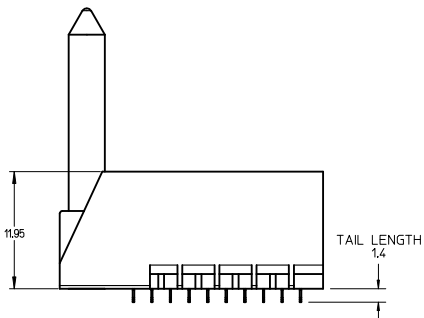
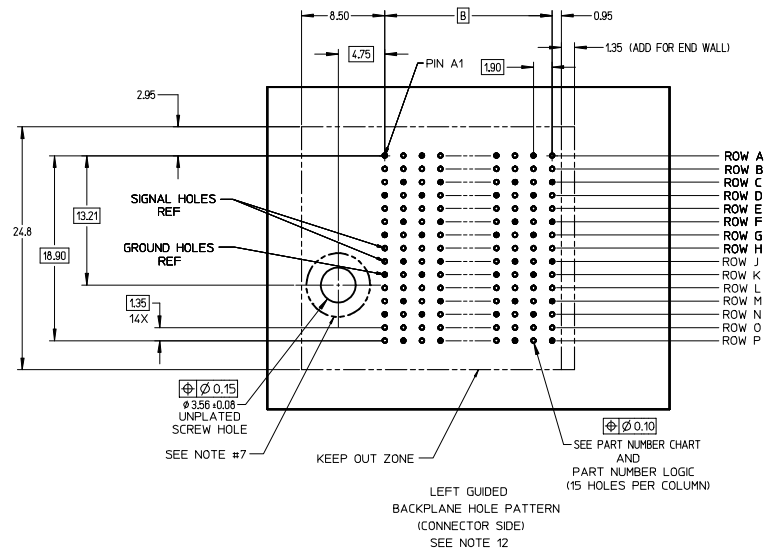
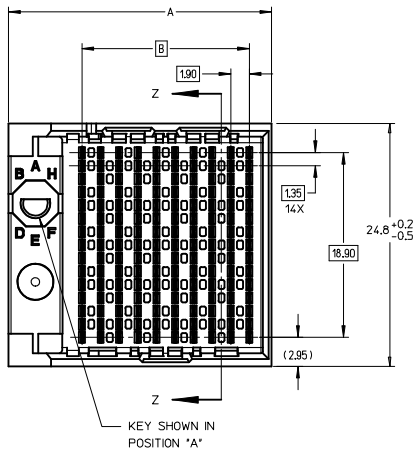
GUIDE LEFT  
OPEN WALL  
OPTION

|   |  |                    |  |                                       |                            |   |                    |   |                        |  |  |
|---|--|--------------------|--|---------------------------------------|----------------------------|---|--------------------|---|------------------------|--|--|
| SEE SHEET 1<br>EC NO: UCP2016-2332<br>DRWNS:VANG01<br>CHKD:MWOLFE<br>APPR:SMILLER | 2015/12/09<br>2015/12/09<br>2015/12/17 | DESCRIPTION<br>REV | QUALITY SYMBOLS                                      | GENERAL TOLERANCES (UNLESS SPECIFIED) | DIMENSION STYLE<br>MM ONLY |   | SCALE<br>2:1       | DESIGN UNITS<br>METRIC  | THIRD ANGLE PROJECTION |  |  |
|   |  |                    | ▽=0  | mm                                    | INCH                       | DRAWN BY<br>SVANG01   | DATE<br>2015/12/09 | TITLE<br>IMPACT 5 PAIR HEADER<br>LEFT GUIDED PDNI<br>ASSEMBLY SALES DRAWING<br><b>molex</b><br>MATERIAL NO. RSD-173430-002<br>DOCUMENT NO. 2 OF 3 |                        |  |  |
|   |  |                    | ▽=0  | 4 PLACES ±---                         | ±---                       | CHECKED BY<br>MWOLFE  | DATE<br>2015/12/09 |   |                        |  |  |
|   |  |                    | ▽=0  | 3 PLACES ±---                         | ±---                       | APPROVED BY<br>SMILLER  | DATE<br>2015/12/17 |   |                        |  |  |
|   | 2 PLACES ±0.13                         | ±---               | DRAFT WHERE APPLICABLE MUST REMAIN WITHIN DIMENSIONS |                                       |                            |   |                    |   |                        |  |  |
|   | 1 PLACE ±0.25                          | ±---               | ANGULAR ±1/2°  |                                       | SIZE<br>C                  | THIS DRAWING CONTAINS INFORMATION THAT IS PROPRIETARY TO MOLEX INCORPORATED AND SHOULD NOT BE USED WITHOUT WRITTEN PERMISSION |                    |   |                        |  |  |
|   | 0 PLACE ±                              | ±                  |  |                                       |                            |   |                    |   |                        |  |  |

IMPACT 5 PAIR  
BOARD RELATIONSHIPS



| <b>SEE SHEET 1</b><br>EC NO: UCP2016-2332<br>DRWNSVANG01 2015/12/09<br>CHKD:MWOLFE 2015/12/09<br>APPR:SMILLER 2015/12/17 | QUALITY SYMBOLS<br>▽=0<br>▽=0<br>▽=0  | GENERAL TOLERANCES (UNLESS SPECIFIED)<br><table border="1"> <tr> <th></th> <th>mm</th> <th>INCH</th> </tr> <tr> <td>4 PLACES</td> <td>± ---</td> <td>± ---</td> </tr> <tr> <td>3 PLACES</td> <td>± ---</td> <td>± ---</td> </tr> <tr> <td>2 PLACES</td> <td>± 0.13</td> <td>± ---</td> </tr> <tr> <td>1 PLACE</td> <td>± 0.25</td> <td>± ---</td> </tr> <tr> <td>0 PLACE</td> <td>±</td> <td>±</td> </tr> </table> |       | mm | INCH | 4 PLACES | ± --- | ± --- | 3 PLACES | ± --- | ± --- | 2 PLACES | ± 0.13 | ± --- | 1 PLACE | ± 0.25 | ± --- | 0 PLACE | ± | ± | DIMENSION STYLE<br><b>MM ONLY</b><br>DRAWN BY DATE<br>SVANG01 2015/12/09<br>CHECKED BY DATE<br>MWOLFE 2015/12/09<br>APPROVED BY DATE<br>SMILLER 2015/12/17 | SCALE<br><b>2:1</b><br>DESIGN UNITS<br><b>METRIC</b><br>THIRD ANGLE PROJECTION | TITLE<br><b>IMPACT 5 PAIR HEADER<br/>                 LEFT GUIDED PDNI<br/>                 ASSEMBLY SALES DRAWING</b><br><b>molex</b> |
|--|---------------------------------------|--|-------|----|------|----------|-------|-------|----------|-------|-------|----------|--------|-------|---------|--------|-------|---------|---|---|--|--|--|
|  |                                       | mm   | INCH  |    |      |          |       |       |          |       |       |          |        |       |         |        |       |         |   |   |  |  |  |
|  | 4 PLACES                              | ± ---  | ± --- |    |      |          |       |       |          |       |       |          |        |       |         |        |       |         |   |   |  |  |  |
|  | 3 PLACES                              | ± ---  | ± --- |    |      |          |       |       |          |       |       |          |        |       |         |        |       |         |   |   |  |  |  |
| 2 PLACES   | ± 0.13                                | ± ---  |       |    |      |          |       |       |          |       |       |          |        |       |         |        |       |         |   |   |  |  |  |
| 1 PLACE  | ± 0.25                                | ± ---  |       |    |      |          |       |       |          |       |       |          |        |       |         |        |       |         |   |   |  |  |  |
| 0 PLACE  | ±                                     | ±  |       |    |      |          |       |       |          |       |       |          |        |       |         |        |       |         |   |   |  |  |  |
| MATERIAL NO.<br><b>SEE TABLE</b>   | DOCUMENT NO.<br><b>RSD-173430-002</b> | SHEET NO.<br><b>3 OF 3</b>   |       |    |      |          |       |       |          |       |       |          |        |       |         |        |       |         |   |   |  |  |  |
| DRAFT WHERE APPLICABLE<br>MUST REMAIN<br>WITHIN DIMENSIONS   | SIZE<br><b>C</b>                      | THIS DRAWING CONTAINS INFORMATION THAT IS PROPRIETARY TO MOLEX<br>INCORPORATED AND SHOULD NOT BE USED WITHOUT WRITTEN PERMISSION   |       |    |      |          |       |       |          |       |       |          |        |       |         |        |       |         |   |   |  |  |  |



- NOTES:
- MATERIALS: HOUSING - LIQUID CRYSTAL POLYMER (LCP)  
GLASS-FILLED, UL94V-0  
TERMINALS - HIGH PERFORMANCE COPPER ALLOY
  - FINISH: 30µ MIN GOLD IN CONTACT AREA.  
SELECTIVE TIN ON PCB TAILS.  
NICKEL OVERALL.
  - REFER TO MOLEX PRODUCT SPECIFICATION PS-76060-999  
FOR PERFORMANCE SPECIFICATIONS AND ADDITIONAL PCB INFORMATION.
  - THIS PART CONFORMS TO CLASS B REQUIREMENTS OF  
MOLEX COSMETIC SPEC PS-45499-002.
  - PACKAGE PER: PK-70873-759.
  - SEE SHEETS 2 & 3 FOR PART NUMBERS AND BOARD RELATIONSHIPS.
  - FOR GROUNDED GUIDE PINS USE DIA. 3.56 +/-0.08 (PTH)  
DIA. 3.66 (DRILL) AND DIA 6.5 (PAD).
  - MATES WITH IMPACT DC SERIES NO. 76060.
  - KEEP OUT ZONE FOR BP HOUSING LENGTH INCLUDES AN ADDITIONAL 1.0MM  
TO ACCOMMODATE FOR SPACE REQUIRED BY DC FRONT HOUSING.
  - REFER TO MOLEX PCB ROUTING GUIDE AS-76060-990 FOR ANTI PAD AND ROUTING RECOMMENDATIONS.
  - CONNECTORS SUPPLIED WITH A 2-56 UNC-2A SCREW.
  - THESE DIMENSIONS REPRESENT THE AREA NEEDED TO ACCOMMODATE CONNECTOR INSERTION  
AND REPAIR ON THE PC BOARD, THIS IS REFERRED TO AS THE 'CONNECTOR KEEP OUT ZONE'  
AND DOES NOT REPRESENT THE ACTUAL PERIMETER OF THE CONNECTOR. WHEN LAYING OUT  
A PC BOARD FOR CONNECTORS STACK TOGETHER, USE A 1.9mm PROGRESSION.

|  |                                      |  |   |   |                     |  |                        |
|--|--------------------------------------|--|---|---|---------------------|--|------------------------|
| CONVERT TO LEAD-FREE<br>IEC NO: UCP2013-2078<br>DRAWN BY: BARRA 2012/11/26<br>CHKD BY: INGHAM 2012/12/18<br>APPR: SMILLER 2012/12/31 | QUALITY SYMBOLS<br>∇=0<br>∇=0<br>∇=0 | GENERAL TOLERANCES (UNLESS SPECIFIED)<br>mm INCH   |   | DIMENSION STYLE<br><b>MM ONLY</b>   | SCALE<br><b>4:1</b> | DESIGN UNITS<br><b>METRIC</b>  | THIRD ANGLE PROJECTION |
|  |                                      | 4 PLACES ±--- ±---<br>3 PLACES ±--- ±---<br>2 PLACES ±0.13 ±---<br>1 PLACE ±0.25 ±---<br>0 PLACE ± ± | DRAWN BY: MSANDBERG 05/24/2007<br>CHECKED BY: JL AURX 05/24/2007<br>APPROVED BY: JL AURX 2010/10/15 | TITLE<br><b>IMPACT 5 PAIR HEADER<br/>LEFT GUIDED ASSEMBLY<br/>SALES DRAWING</b> |                     | <b>molex</b>   |                        |
| DRAFT WHERE APPLICABLE<br>MUST REMAIN WITHIN DIMENSIONS  |                                      | MATERIAL NO.<br><b>SEE TABLE</b>   |   | DOCUMENT NO.<br><b>SD-76055-002</b>   |                     | THIS DRAWING CONTAINS INFORMATION THAT IS PROPRIETARY TO MOLEX<br>INCORPORATED AND SHOULD NOT BE USED WITHOUT WRITTEN PERMISSION |                        |

# PART NUMBER LOGIC

76055-\*\*\*\*

MODULE TYPE

- 3 = GUIDE LEFT, TIN
- 7 = GUIDE LEFT END WALL, TIN

PIN LENGTH (P)

- 3 = 4.50 (SHORT COMPLIANT, 0.46±0.05 PTH)
- 4 = 4.90 (SHORT COMPLIANT, 0.46±0.05 PTH)
- 5 = 5.50 (SHORT COMPLIANT, 0.46±0.05 PTH)
- 6 = 4.50 (MICRO COMPLIANT, 0.39±0.05 PTH)
- 7 = 4.90 (MICRO COMPLIANT, 0.39±0.05 PTH)
- 8 = 5.50 (MICRO COMPLIANT, 0.39±0.05 PTH)

# OF COLUMNS

- 1 = 10 COL
- 2 = 12 COL
- 6 = 16 COL
- 7 = 14 COL

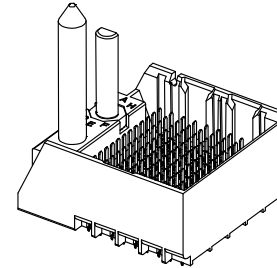
KEY ORIENTATION

- 0 = NO KEY
- 1 = A
- 2 = B
- 3 = C
- 4 = D
- 5 = E
- 6 = F
- 7 = G
- 8 = H

# PART NUMBER TABLE

| MATERIAL NUMBER | # OF COLUMNS | # OF DIFF PAIR | DIM "A" | DIM "B" |
|-----------------|--------------|----------------|---------|---------|
| 76055-1**       | 10           | 50             | 26.9    | 17.10   |
| 76055-2**       | 12           | 60             | 30.7    | 20.90   |
| 76055-7**       | 14           | 70             | 34.5    | 24.70   |
| 76055-6**       | 16           | 80             | 38.3    | 28.50   |

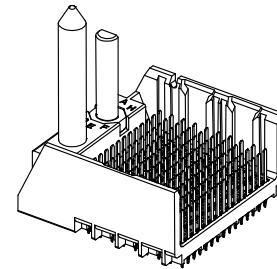
GUIDE LEFT  
END WALL  
OPTION



GUIDE LEFT  
END WALL  
OPTION

| MATERIAL NUMBER | # OF COLUMNS | # OF DIFF PAIR | DIM "A" | DIM "B" |
|-----------------|--------------|----------------|---------|---------|
| 76055-1**       | 10           | 50             | 25.5    | 17.10   |
| 76055-2**       | 12           | 60             | 29.3    | 20.90   |
| 76055-7**       | 14           | 70             | 33.1    | 24.70   |
| 76055-6**       | 16           | 80             | 36.9    | 28.50   |

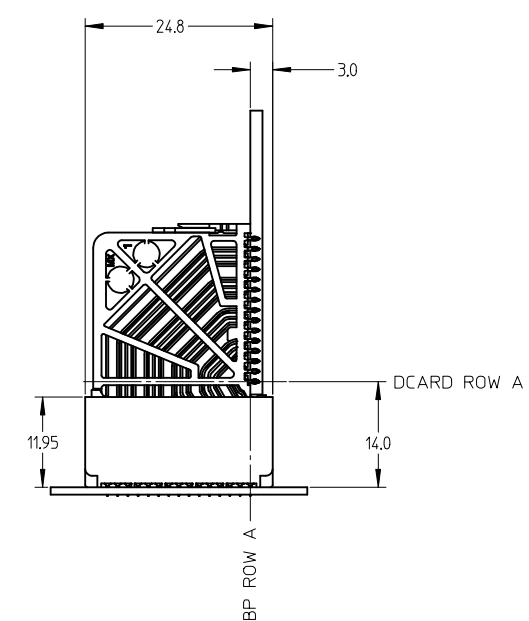
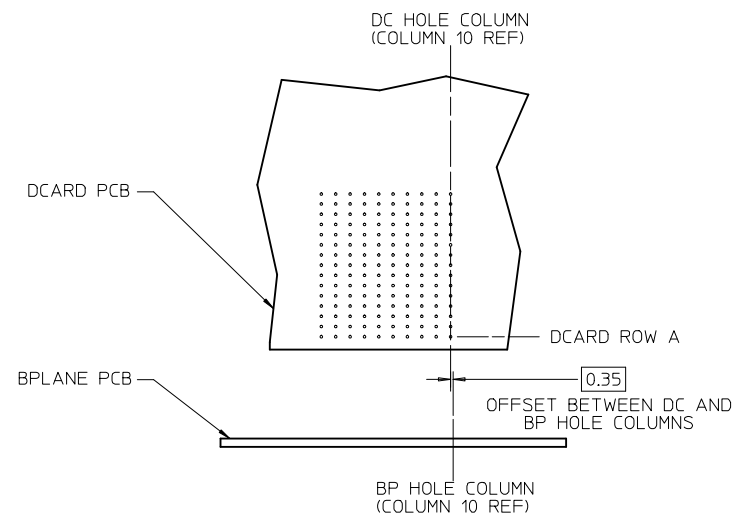
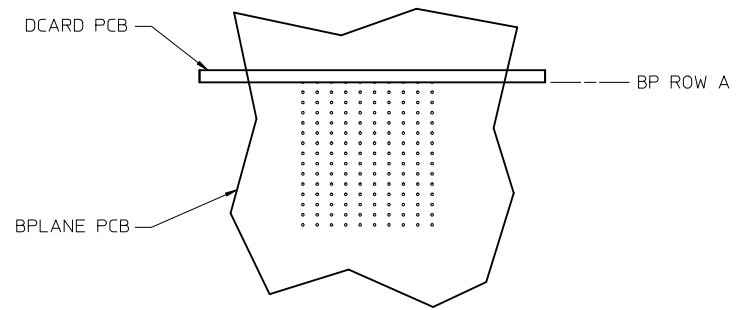
GUIDE LEFT  
OPEN WALL  
OPTION



GUIDE LEFT  
OPEN WALL  
OPTION

|   |                       |                           |  |                            |   |   |                        |                        |
|---|-----------------------|---------------------------|--|----------------------------|---|---|------------------------|------------------------|
| SEE SHEET 1<br>EC NO: UCP2013-2078<br>DRWN: TIBARRA 2012/11/26<br>CHKD: BINGHAM 2012/12/18<br>APPR: MILLER 2012/12/31 | DESCRIPTION<br>REV    | QUALITY SYMBOLS           | GENERAL TOLERANCES (UNLESS SPECIFIED)                | DIMENSION STYLE<br>MM ONLY |   | SCALE<br>2:1  | DESIGN UNITS<br>METRIC | THIRD ANGLE PROJECTION |
|   |                       | ▽=0                       | mm INCH  | DRAWN BY DATE              | TITLE   | IMPACT 5 PAIR HEADER<br>LEFT GUIDED ASSEMBLY<br>SALES DRAWING<br><b>molex</b><br>SD-76055-002 | SHEET NO.<br>2 OF 3    |                        |
|   |                       | ▽=0                       | 4 PLACES ± --- ± ---                                 | CHECKED BY DATE            |   |   |                        |                        |
|   |                       | ▽=0                       | 3 PLACES ± --- ± ---                                 | APPROVED BY DATE           |   |   |                        |                        |
|   | 2 PLACES ± 0.13 ± --- | MATERIAL NO. DOCUMENT NO. |  |                            |   |   |                        |                        |
|   | 1 PLACE ± 0.25 ± ---  | SEE TABLE                 | DRAFT WHERE APPLICABLE MUST REMAIN WITHIN DIMENSIONS |                            | THIS DRAWING CONTAINS INFORMATION THAT IS PROPRIETARY TO MOLEX INCORPORATED AND SHOULD NOT BE USED WITHOUT WRITTEN PERMISSION |   |                        |                        |
|   | 0 PLACE ± ±           |                           |  |                            |   |   |                        |                        |

IMPACT 5 PAIR  
BOARD RELATIONSHIPS



|   |                                      |                                       |             |                                   |                                  |   |   |                        |  |  |
|---|--------------------------------------|---------------------------------------|-------------|-----------------------------------|----------------------------------|---|---|------------------------|--|--|
| <b>SEE SHEET 1</b><br>EC NO: UCP2013-2078<br>DRWN: TIBARRA 2012/11/26<br>CHKD: J BINGHAM 2012/12/18<br>APPR: SMILLER 2012/12/31 | QUALITY SYMBOLS<br>▽=0<br>▽=0<br>▽=0 | GENERAL TOLERANCES (UNLESS SPECIFIED) |             | DIMENSION STYLE<br><b>MM ONLY</b> |                                  | SCALE<br><b>2:1</b>   | DESIGN UNITS<br><b>METRIC</b>   | THIRD ANGLE PROJECTION |  |  |
|   |                                      | 4 PLACES ± --- ± ---                  | mm          | INCH                              | DRAWN BY                         | DATE  | TITLE<br><b>IMPACT 5 PAIR HEADER LEFT GUIDED ASSEMBLY SALES DRAWING</b><br><b>molex</b> |                        |  |  |
|   |                                      | 3 PLACES ± --- ± ---                  |             |                                   | CHECKED BY                       | DATE  |   |                        |  |  |
|   |                                      | 2 PLACES ± 0.13 ± ---                 |             |                                   | JLAURX                           | 05/24/2007  | DOCUMENT NO.<br><b>SD-76055-002</b>   |                        |  |  |
| 1 PLACE ± 0.25 ± ---  |                                      |                                       | APPROVED BY | DATE                              |                                  |   |   |                        |  |  |
| 0 PLACE ± ±   |                                      |                                       | JLAURX      | 2010/10/15                        | MATERIAL NO.<br><b>SEE TABLE</b> |   | SHEET NO.<br><b>3 OF 3</b>  |                        |  |  |
| DRAFT WHERE APPLICABLE MUST REMAIN WITHIN DIMENSIONS  |                                      |                                       |             | SIZE<br><b>C</b>                  |                                  | THIS DRAWING CONTAINS INFORMATION THAT IS PROPRIETARY TO MOLEX INCORPORATED AND SHOULD NOT BE USED WITHOUT WRITTEN PERMISSION |   |                        |  |  |