

# LF Series Precision Snap-acting Reset Switches



## Features/Benefits

- Low operating force
- Long life
- Compact design
- High electrical ratings

## Typical Applications

- Pumps
- Furnace controls



## Specifications

CONTACT RATING: See chart on next page  
 ELECTRICAL LIFE: 100,000 cycles at 5 Amps @ 250  
 INSULATION RESISTANCE: 1,000 Meg Ohms Min.  
 DIELECTRIC STRENGTH: 1,000 V RMS min. @ sea  
 OPERATING TEMPERATURE: -40 C to 95 C  
 OPERATING FORCE: see chart on next page  
 MOUNTING: 2-56 screws, torque 2.3 in/ lbs max (not included)

## Materials

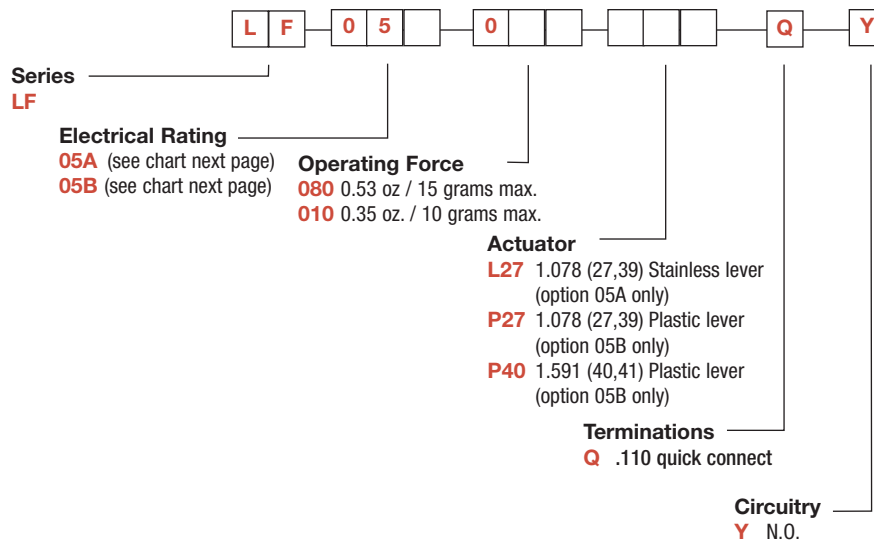
SWITCH HOUSING: 6/6 nylon or PBT 94V0  
 ACTUATOR BUTTON: Thermoset 05A option only  
 SPRING: Stainless steel 05B option  
 MOVABLE CONTACT: Fine silver or silver/nickel  
 STATIONARY CONTACT: Fine silver on copper alloy  
 LEVER: 05A option stainless steel  
 05B option PBT 94V0



Snap-acting

## Build-A-Switch

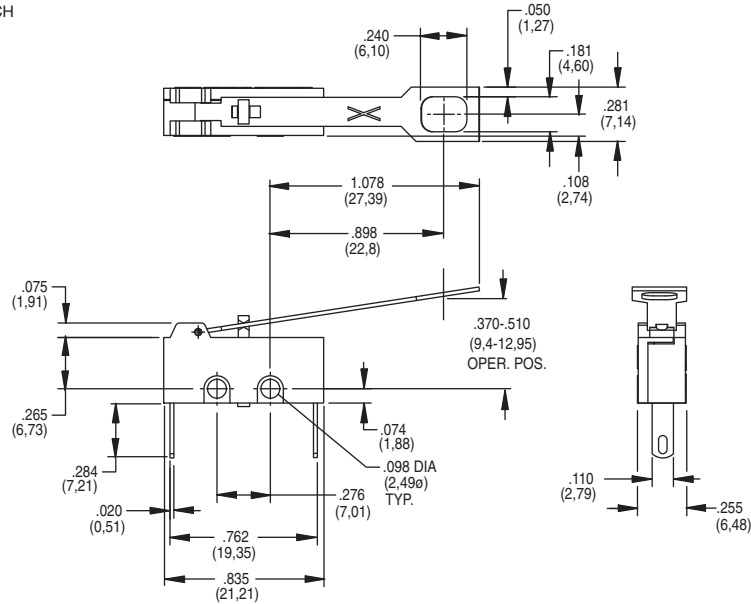
To order, simply select desired option from each category and place in the appropriate box. Available options are shown and described on page K-63. For additional options not shown in catalog, consult Customer Service Center.



Dimensions are shown: Inch (mm)  
 Specifications and dimensions subject to change

# LF Series Precision Snap-acting Reset Switches

**LF** PRECISION SNAP-ACTING RESET SWITCH



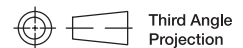
## ELECTRICAL RATING

Option Code	RoHS Compliant *	RoHS Compatible *	Electrical Rating		
			Moveable Contact	Stationary Contact	Electrical Rating
<b>05A</b>	Yes	Yes	Fine Silver	Fine Silver on copper alloy	5 Amps @ 250VAC (UL/CSA) 2 Amps @ 480VAC (UL/CSA) 1/2 @ 480VAC (UL/CSA) 5 (1) @ 250VAC-10E3 T90 (VDE)
<b>05B</b>	Yes	Yes	Silver / Nickel	Fine Silver on copper alloy	5 Amps @ 125/250 VAC (UL/CSA) 5 (1) @ 250VAC-10E3 T90 (VDE) 1/8 HP @ 125 VAC 1/4 HP @ 250 VAC

All models   with all options.

## OPERATING FORCE & ACTUATOR

Switch Characteristic			
Option Code	Maximum Operate Force oz/grams	Operating Position	Differential Travel
<b>L27</b>	0.53 / 15	.398 ± .05	.130 ± .030
<b>P27</b>	0.35 / 10	.398 ± .05	.130 ± .030
<b>P40</b>	0.35 / 10	.500 ± .05	.140 ± .030



Dimensions are shown: IN (mm)  
Specifications and dimensions subject to change



**K**

Snap-acting

# LF Series Precision Snap-acting Reset Switches

ACTUATOR



K

Snap-acting



Third Angle  
Projection

*Dimensions are shown: IN (mm)  
Specifications and dimensions subject to change*