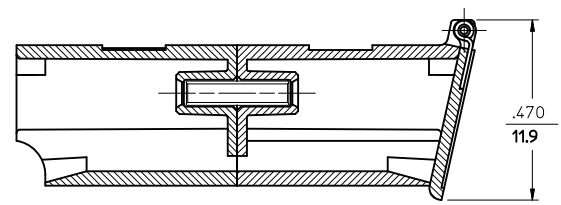
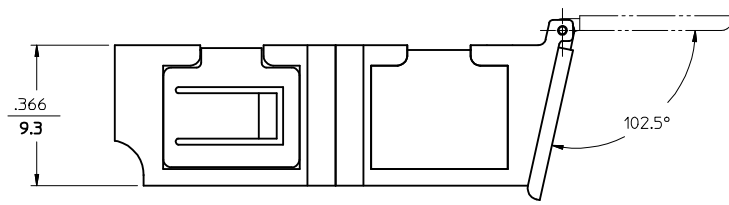


RECOMMENDED MOUNTING CUTOUT FOR .063 MAX. THICK PANEL



SECTION A-A



NOTES:

- 1. DIMENSIONS ARE FOR REFERENCE ONLY.
- 2. ADAPTER COLOR - GREEN.
- 3. DUST CAP IS NOT SHOWN, BUT INCLUDED.
- 4. LABELS WITH ADAPTER ARE PACKED IN POLY BAG.

ENTER DESCRIPTION EC NO: MF2009-0243 DRW:KPEVZNER CHKD: 2008/12/04 APPR:IGJMIN 2008/12/05	QUALITY SYMBOLS ▽=0 ▽=0	GENERAL TOLERANCES (UNLESS SPECIFIED)		DIMENSION STYLE IN/MM	SCALE 1:1	DESIGN UNITS INCH	THIRD ANGLE PROJECTION		
		4 PLACES ± --- ± --- 3 PLACES ± --- ± --- 2 PLACES ± --- ± --- 1 PLACE ± --- ± ---	mm INCH ± --- ± --- ± --- ± --- ± --- ± --- ± --- ± ---	DRAWN BY D.B.	DATE 2006/2/1	TITLE LCD ADAPTER W/SHUTTERS (SMALL FLANGE/SC FOOT PRINT) ZR SLEEVE			
		ANGULAR ±1/2°		CHECKED BY DATE	APPROVED BY I.G.	DATE 2006/2/1	MOLEX INCORPORATED		
		DRAFT WHERE APPLICABLE MUST REMAIN WITHIN DIMENSIONS		MATERIAL NO. 1061271452	DOCUMENT NO. SD-106127-1452	SHEET NO. 1 OF 1			

THIS DRAWING CONTAINS INFORMATION THAT IS PROPRIETARY TO MOLEX INCORPORATED AND SHOULD NOT BE USED WITHOUT WRITTEN PERMISSION