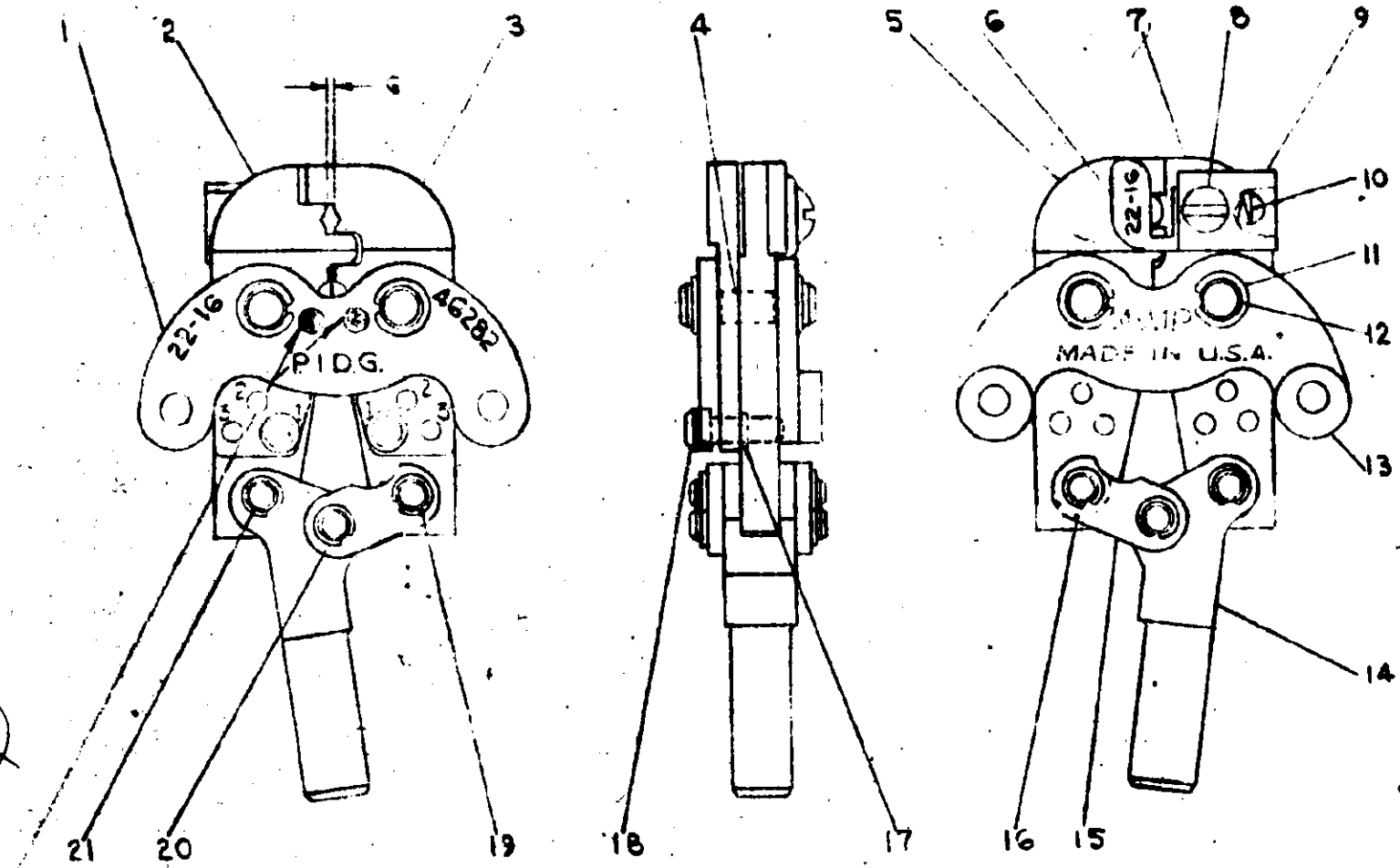


Catalog 46282

**CUSTOMER COPY
FOR REFERENCE ONLY**

G WITH PIN AT	1	
GO	NO GO	
.035	.055	

PARTS LIST			
ITEM NO	PART NO.	NO. REQD.	DESCRIPTION
1	30632/6	1	LINK-FINISHED
2	48292	1	CRIMPING JAW-INSULATION
3	48293	1	CRIMPING JAW-INSULATION
4	39085	1	PIN-PIVOT
5	47255-2	1	CRIMPING JAW-INDENTER
6	302993	1	STOP
7	47256-2	1	CRIMPING JAW-ANVIL
8	9305927-1	1	SCR TRUSS HD MACH
9	302994	1	HOUSING - STOP
10	301201	1	SPRING
11	21045-6	4	RING-RETAINING
12	38807	2	PIN
13	30632/1	1	LINK-FINISHED
14	302995	1	LEVER-TOGGLE
15	38039	2	LINK-TOGGLE
16	38779	2	SPACER
17	39208	6	RING
18	39207	2	PIN-ADJUSTMENT
19	38781	2	PIN
20	21045-3	6	RING-RETAINING
21	38783	1	PIN

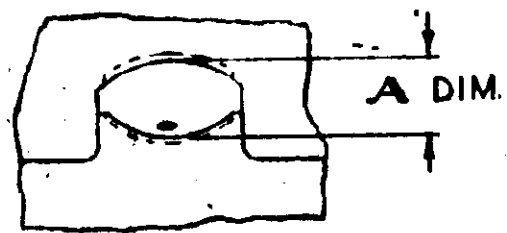


COLOR CODED: RED

SUPERSEDED BY LS 1411

COPYRIGHT IN U.S.A. 1958 BY AMP INCORPORATED
COPYRIGHT UNDER INTERNATIONAL COPYRIGHT UNION. ALL RIGHTS
RESERVED UNDER PAN-AMERICAN COPYRIGHT UNION (1957)

A DIM.	
GO	NO GO
.109	.115



ENLARGED VIEW OF CRIMP

Gage dimensions apply when tool is bottomed but not under pressure.

BY	NO	ALT
1		
2		
3		
4		
5		
6		
7		
8		
9		
10		
11		
12		
13		
14		
15		
16		
17		
18		
19		
20		
21		

22		
23		
24		
25		

MATERIAL:
HEAT TREAT:

PNEUMATIC HAND TOOL HEAD ASSEMBLY		
CLASS		
TYPE CONFINED CRESCENT P.I.D.G.		
WIRE SIZE 22-16		
EXCEPT AS NOTED		
TOLERANCES		
DECIMALS		
ANGLES		
FRACTIONS		
SCALE CATALOG NUMBER 46282		
AMP INCORPORATED HARRISBURG, PENNA.		

REV	REVISIONS	DATE	BY	N.D.C.
E1	SUR BY T.S. 1411	1-8-59		
D	REVISED	5-8-58		
C	REVISED	5-9-52		
B	REVISED	1-29-52		
A	REVISED	6-27-51		
	RELEASED	1-8-58		