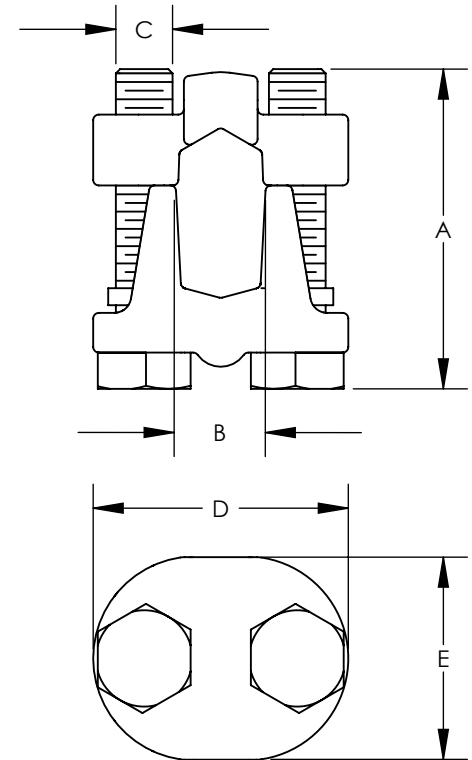


THIS COPY IS PROVIDED ON A RESTRICTED BASIS AND IS NOT TO BE USED IN ANY WAY DETRIMENTAL TO THE INTERESTS OF PANDUIT CORP.

PART NUMBER	A BOLT LENGTH	APPROXIMATE DIMENSIONS			
		B	C	D	E
VTA-0-Q	1-1/4 [32]	13/32 [10.3]	5/16	1-7/16 [37]	15/16 [24]
VTA-1-Q	1-1/2 [38]	1/2 [12.7]	5/16	1-9/16 [40]	1-1/8 [29]
VTA-2-Q	1-3/4 [44]	19/32 [15]	3/8	1-27/32 [47]	1-11/32 [34]
VTA-3-12	2 [51]	3/4 [19]	1/2	2-5/16 [59]	1-5/8 [41]
VTA-4-12	2-1/4 [57]	7/8 [22.2]	1/2	2-7/16 [62]	1-11/16 [43]
VTA-5-6	2-1/2 [64]	1-1/16 [26.9]	1/2	2-11/16 [68]	1-7/8 [48]
VTA-6-6	2-3/4 [70]	1-1/4 [31.7]	5/8	3-1/16 [78]	2-1/4 [57]

NOTES:

1. MATERIAL: TIN PLATED BRONZE CASTING
2. U.L. LISTED WITH COPPER CONDUCTORS



PART NUMBER	MAXIMUM CONDUCTORS					MAXIMUM WIRE DIAMETER
	COPPER		COPPER WELD SOLID	ALUMINUM		
	SOLID	STR.		AWG.	ACSR.	
VTA-0-Q	2/0	1/0	2/0	1/0 STR	1	0.375
VTA-1-Q	3/0	2/0	3/0	---	---	0.419
VTA-2-Q	4/0	4/0	4/0	---	---	0.528
VTA-3-12	---	350 kcmil	---	---	---	0.682
VTA-4-12	---	500 kcmil	---	---	---	0.815
VTA-5-6	---	800 kcmil	---	---	---	1.031
VTA-6-6	---	1000 kcmil	---	---	---	1.153

REV	DATE	BY	CHK	APR	DESCRIPTION	ECN
02	7/15	JHNU	JHNU	RGB	REVISED PART NUMBER: VTA-1-Q WAS VRA-1-Q	N41209BB-C41209
01	5/15	JHNU	JHNU	RGB	REMOVED MADE IN U.S.A. NOTE REVISED TITLE BLOCK CONVERTED DRAWING TO SOLIDWORKS	N41209BB-C41209

TITLE BRONZE TAPS - 2 BOLT CONNECTOR VTA SERIES CUSTOMER DRAWING	
ITEM REVISION NAME	N41209BBAA/02
DATASET FILE NAME	N41209BB-C41209/02.SLDDRW
UNLESS OTHERWISE SPECIFIED, DIMENSIONAL TOLERANCES ARE: IN [mm]	
.X ±	.XXX ±
.XX ± 1/8" [3.2]	ANGLES ±
THIRD ANGLE PROJECTION	
DRAWN BY T SMA DATE 2/97 CHK SCALE NONE	
MATERIAL SEE NOTES	
DRAWING NUMBER C41209	
SHEET 1 OF 1	
SIZE A	