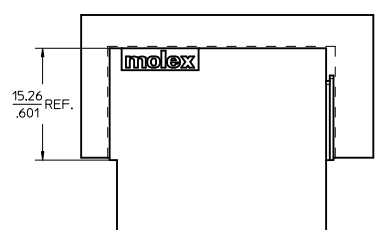
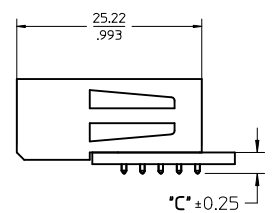
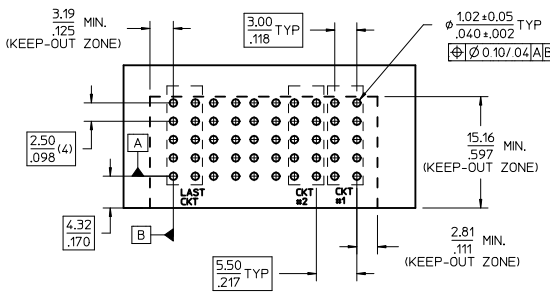


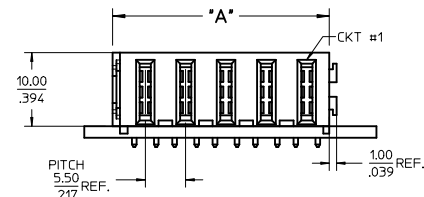
# CKT	STANDARD SOLDER TAILS			LONG SOLDER TAILS			PRESS-FIT TAILS		
	PART NUMBER	DIM "A" ±0.25/±.010	DIM "C" ±0.25/±.010	PART NUMBER	DIM "A" ±0.25/±.010	DIM "C" ±0.25/±.010	PART NUMBER	DIM "A" ±0.25/±.010	DIM "C" ±0.25/±.010
10	46436-9010	57.00/2.244	2.84/1.12	46436-9110	57.00/2.244	3.61/1.42	46436-9210	57.00/2.244	3.28/1.29 (COMPLIANT TAILS DESIGNED FOR MIN. 1.58/0.62" THICK PCB)
9	46436-9009	51.50/2.028		46436-9109	51.50/2.028		46436-9209	51.50/2.028	
8	46436-9008	46.00/1.811		46436-9108	46.00/1.811		46436-9208	46.00/1.811	
7	46436-9007	40.50/1.594		46436-9107	40.50/1.594		46436-9207	40.50/1.594	
6	46436-9006	35.00/1.378		46436-9106	35.00/1.378		46436-9206	35.00/1.378	
5	46436-9005	29.50/1.161		46436-9105	29.50/1.161		46436-9205	29.50/1.161	
4	46436-9004	24.00/0.945		46436-9104	24.00/0.945		46436-9204	24.00/0.945	
3	46436-9003	18.50/0.728		46436-9103	18.50/0.728		46436-9203	18.50/0.728	
2	46436-9002	13.00/0.512		46436-9102	13.00/0.512		46436-9202	13.00/0.512	
1	46436-9001	7.50/0.295		46436-9101	7.50/0.295		46436-9201	7.50/0.295	



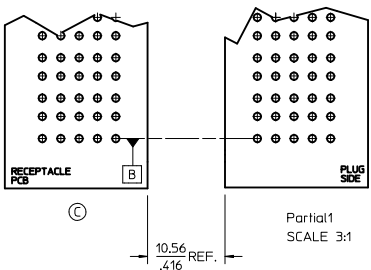
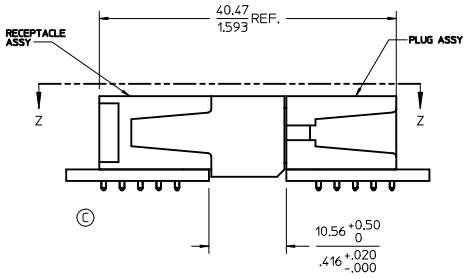
P/N: 46436-9005 SHOWN



RECOMMENDED LAY-OUT AND KEEP-OUT ZONE



P/N: 46436-9005 SHOWN



Partial 1 SCALE 3:1

NOTES:

- MATERIAL:**
-HOUSINGS: LCP UL-94, V-0, COLOR: BLACK.
-TERMINALS: COPPER ALLOY.
-PLATING: 0.00127/.000050 NICKEL OVERALL WITH 0.00254/.000100 SELECTIVE MATTE TIN ON TAILS AND 0.000762/.000030 SELECTIVE GOLD ON CONTACT AREA.
- PACKAGING:** ASSEMBLIES TO BE TRAY PACKED PER PACKAGING SPEC PK-46436-xxx.
- PRODUCT SPEC:** PS-46436-100.
- APPLICATION SPEC:** AS-46436-100.
- ASSEMBLY MATES TO MOLEX PLUG ASSEMBLY 46437 - SERIES: CONTACT MOLEX FOR DETAILS.**

ADD VIEWS EC NO: UCP2011-3988 DRAWN BY: BKOSTIC 2011/06/16 CHECKED BY: CHYDBKOSTIC 2011/06/16 APPROVED BY: APPR:RNEILSON 2011/06/21 REV: C	QUALITY SYMBOLS DRAFT WHERE APPLICABLE MUST REMAIN WITHIN DIMENSIONS	GENERAL TOLERANCES (UNLESS SPECIFIED)		DIMENSION STYLE MM/IN		SCALE 3:1	DESIGN UNITS METRIC	THIRD ANGLE PROJECTION	
		4 PLACES ±.010 3 PLACES ±.010 2 PLACES ±0.25 ±.010 1 PLACE ±0.25 ±.010	4 PLACES ±.010 3 PLACES ±.010 2 PLACES ±0.25 ±.010 1 PLACE ±0.25 ±.010	DRAWN BY: BKOSTIC CHECKED BY: BKOSTIC APPROVED BY: APATEL DATE: 2008/04/24 DATE: 2008/04/24 DATE: 2008/06/30	DATE: 2008/04/24 DATE: 2008/04/24 DATE: 2008/06/30	DC POWER RECEPTACLE MOD TEN60, 5.5 PITCH R/A 1-10 CKT		MOLEX INCORPORATED	SHEET NO. 1 OF 1
		MATERIAL NO. SEE CHART		DOCUMENT NO. SD-46436-9000		THIS DRAWING CONTAINS INFORMATION THAT IS PROPRIETARY TO MOLEX INCORPORATED AND SHOULD NOT BE USED WITHOUT WRITTEN PERMISSION			