

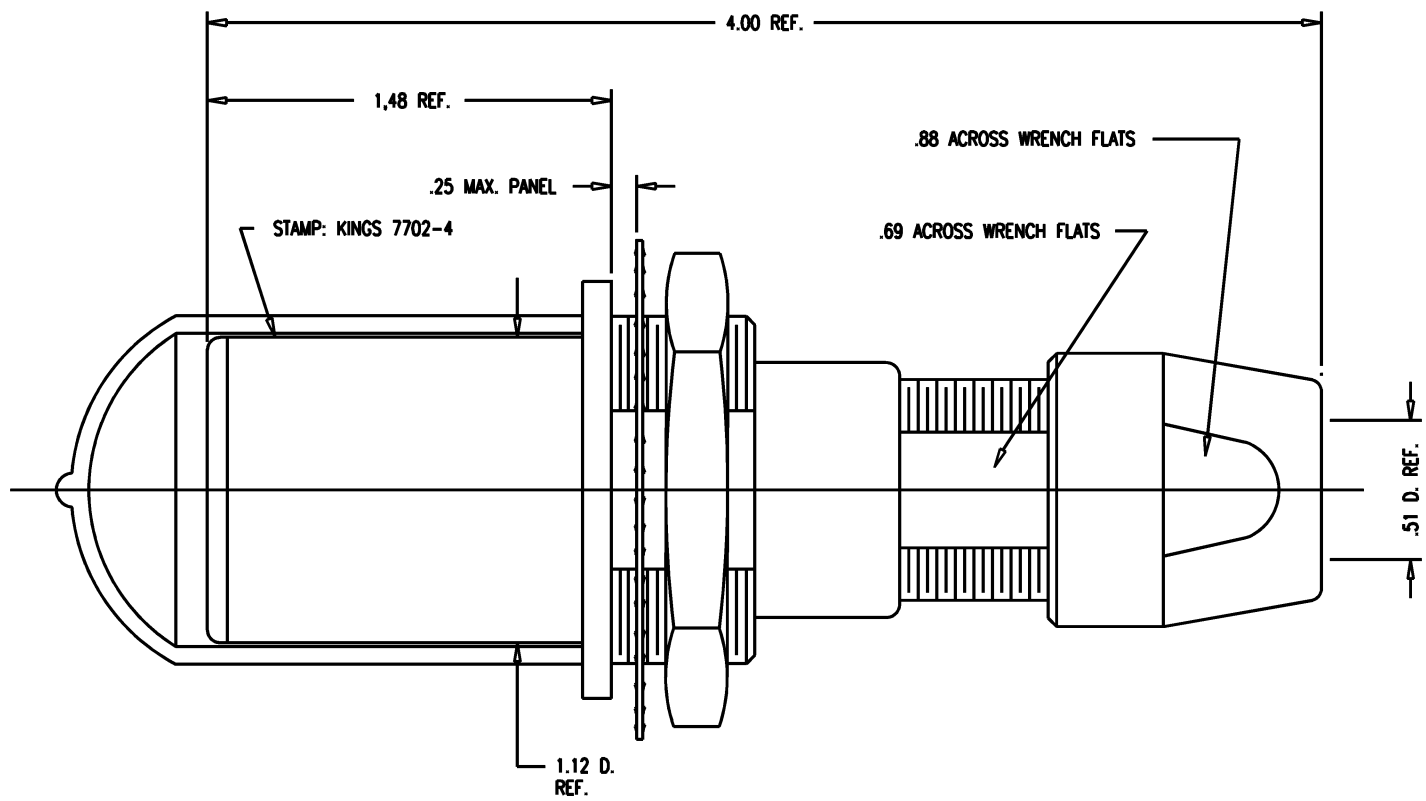
DASH NO.	M CODE	MADE FROM
----------	--------	-----------

# GSD

7702-4

REVISIONS	
ISSUE	CHANGES
0	ER 35430 KH 04/10/95
1	CN 37238 D KH 02/03/97

KAM5521



**NOTES:**

1. FOR USE WITH 700 CABLE GROUP.
2. FOR CABLING INSTRUCTIONS SEE KAI-8010.
3. FOR CABLE TRIMMING USE KTJ-300 AND KTD-300.
4. FOR CRIMPING USE DIE SIZE 2040.
5. MATERIALS:

INSULATORS-TEFLON, ASTM-D-4894  
 LOCKWASHER-SPRING STEEL, PER ASTM A682  
 GASKETS-SILICONE RUBBER, ZZ-R-765  
 CAP-VINYL  
 K-GRIP SLEEVE-COMMERCIAL BRONZE, ASTM-B-135  
 CENTER CONTACT }  
 OUTER CONTACT SPRING } BER. COP., ASTM-B-196  
 INSERT

ALL OTHER METAL PARTS-BRASS, ASTM-B16

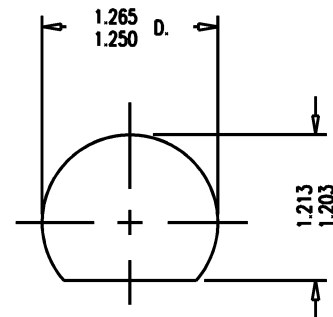
**6. FINISHES:**

CENTER CONTACT }  
 OUTER CONTACT SPRING } GOLD PLATE PER MIL-G-45204  
 LOCKWASHER }  
 NUTS }  
 COLLET } KINGS TARNISH RESISTANT NICKEL FINISH (TR-5)  
 BODIES }

ALL OTHER METAL PARTS-SILVER PLATE PER QQ-S-365

**7. ELECTRICAL CHARACTERISTICS:**

NOMINAL IMPEDANCE: 75 OHMS  
 FREQUENCY RANGE: DC-500 MHZ  
 VOLTAGE BREAKDOWN: CENTER CONDUCTOR/INNER GROUND: 1500 VRMS  
 INNER GROUND/OUTER GROUND: 500 VRMS



# GSD

MOUNTING HOLE

SCALE 2:1	
APPROX SURFACE AREA	
USED ON	
REF: KP-8022-704-400	
JK, BKHD, TRI-LOC, SERIAL DIGITAL	
DRAWN KH	DATE 04/10/95
DESIGN DW	DATE 04/11/95
APPR.	DATE
<b>KINGS</b> ELECTRONICS CO., INC. TUCKAHOE, NEW YORK 10707	
7702-4	