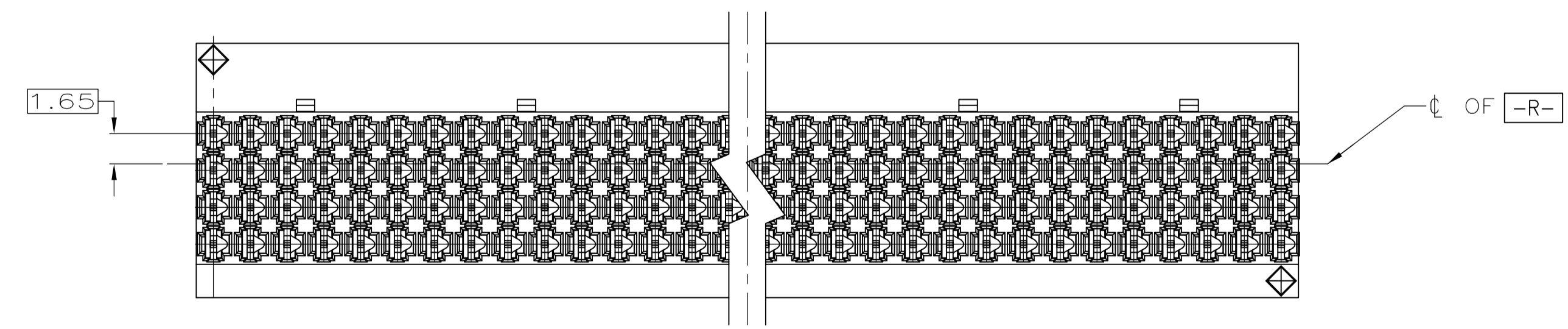
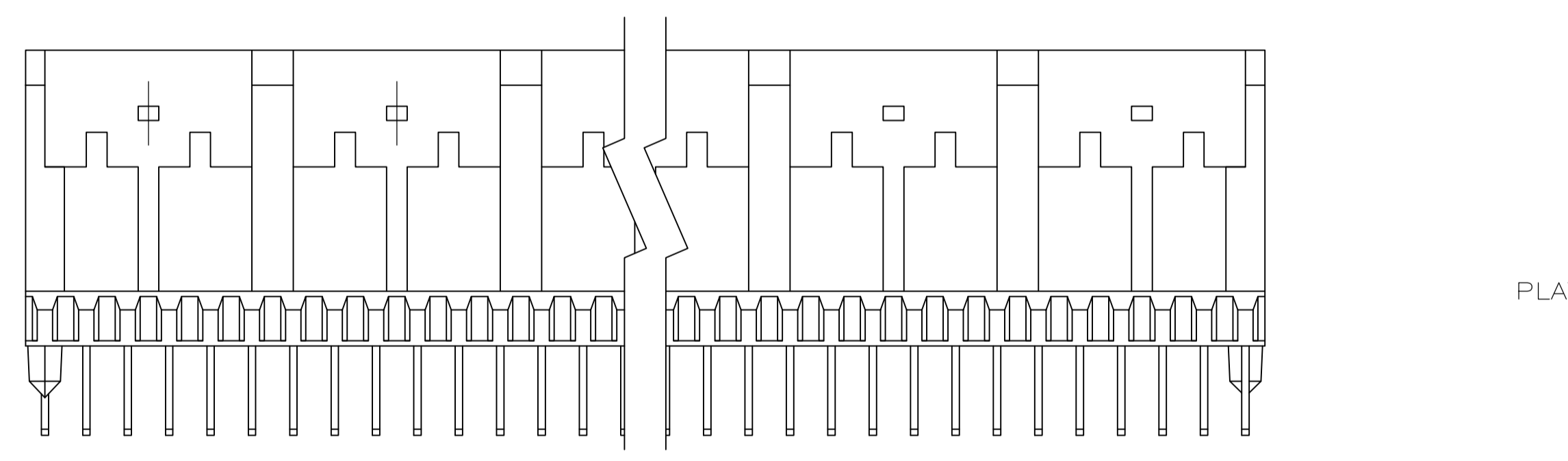
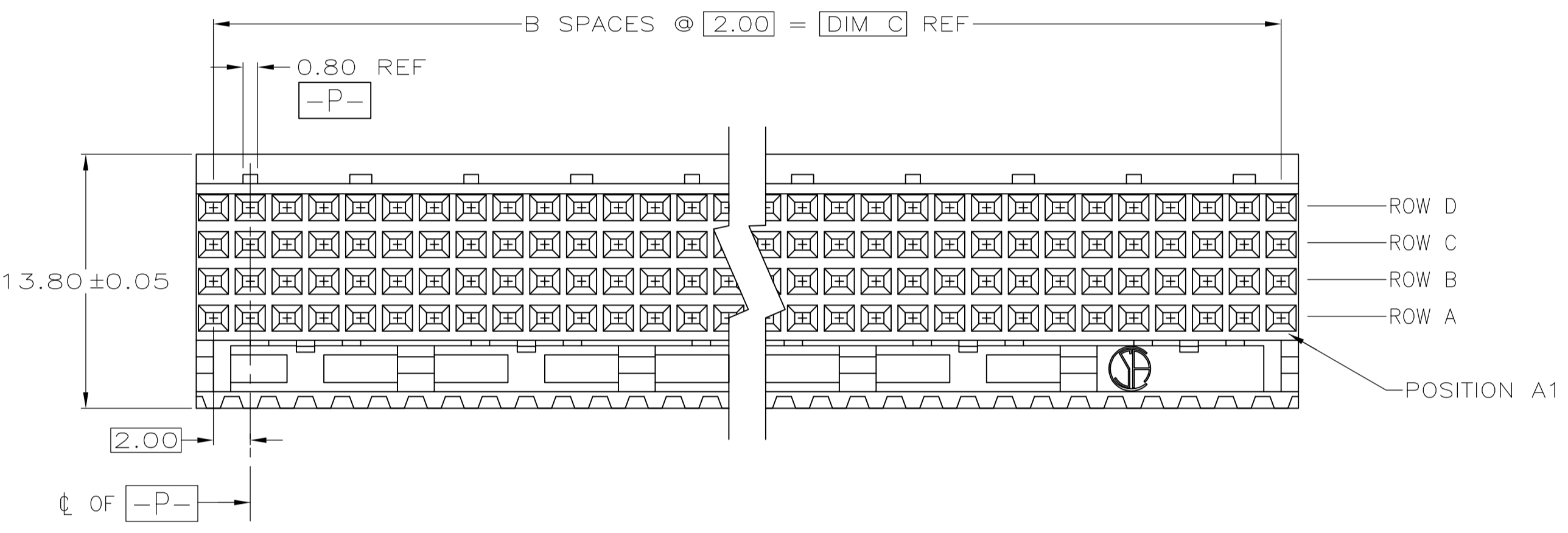
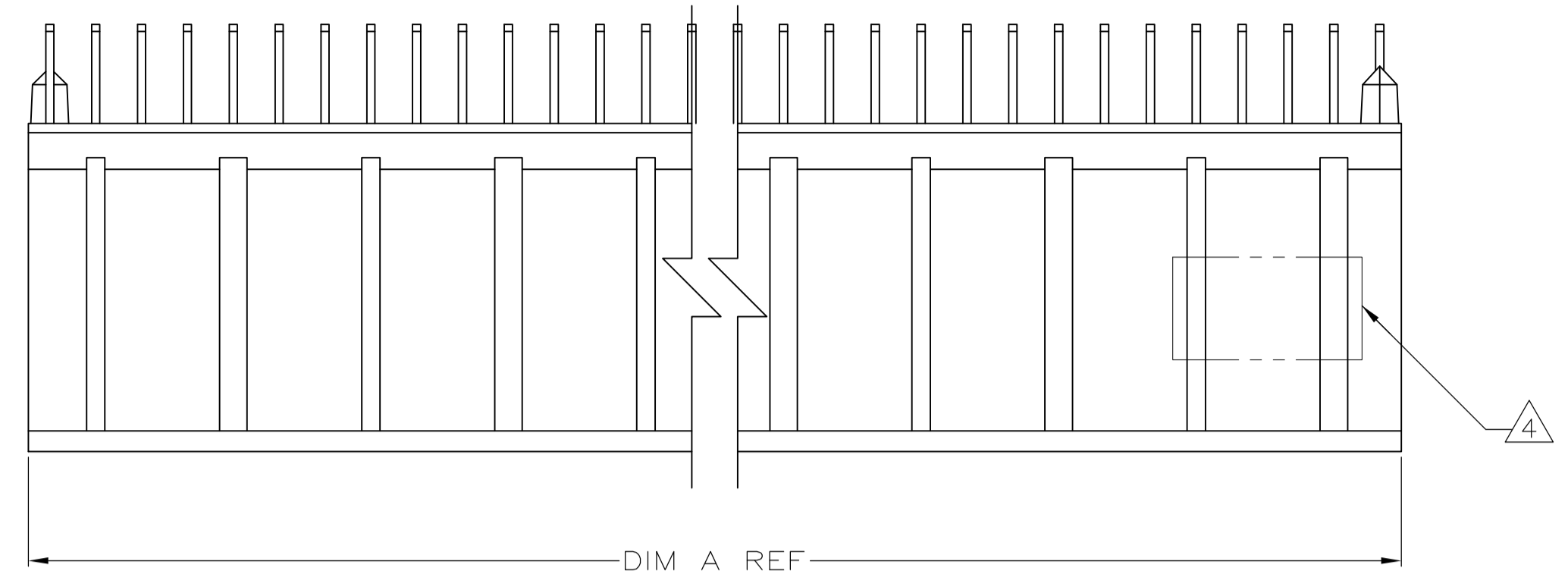
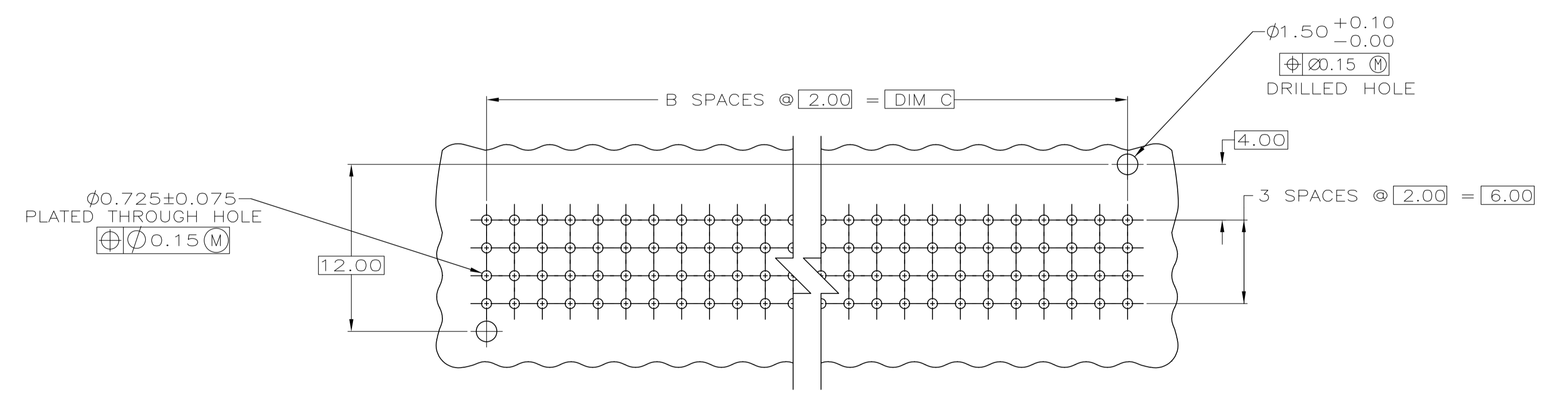
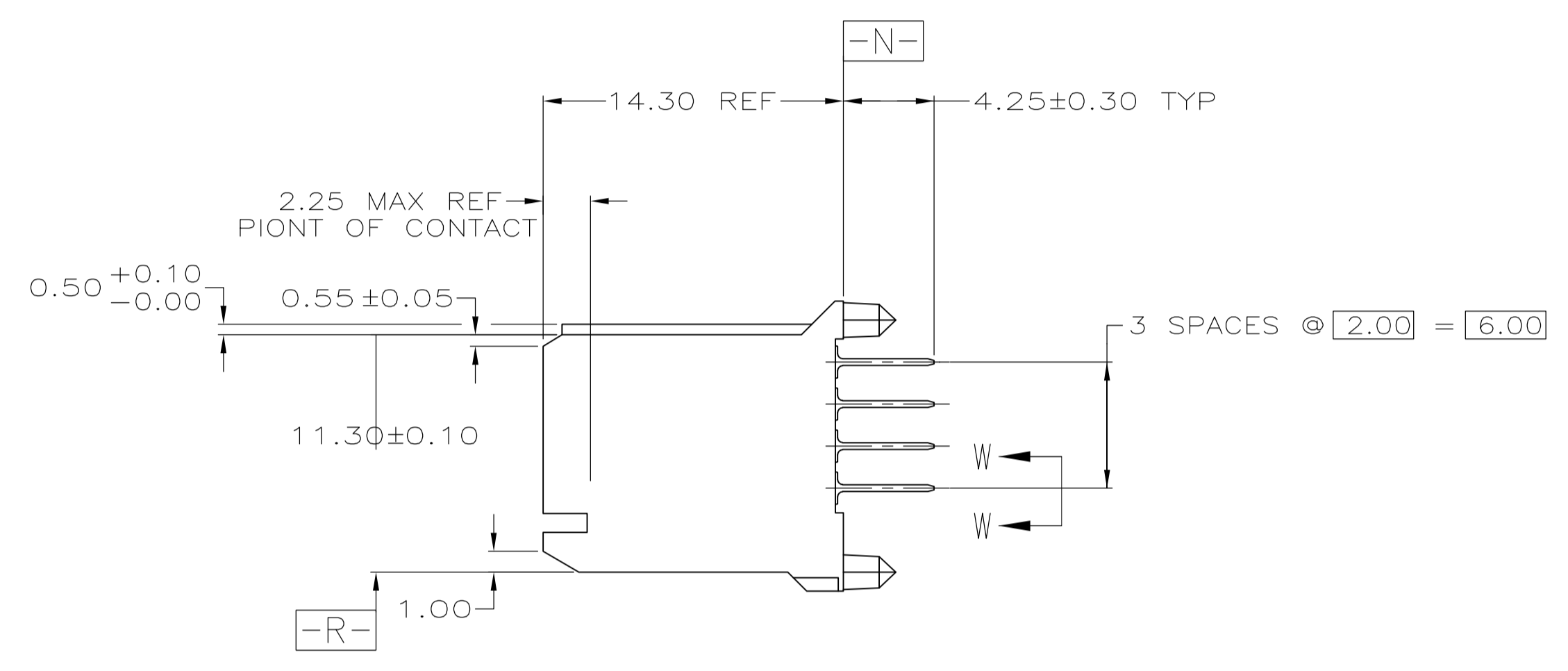


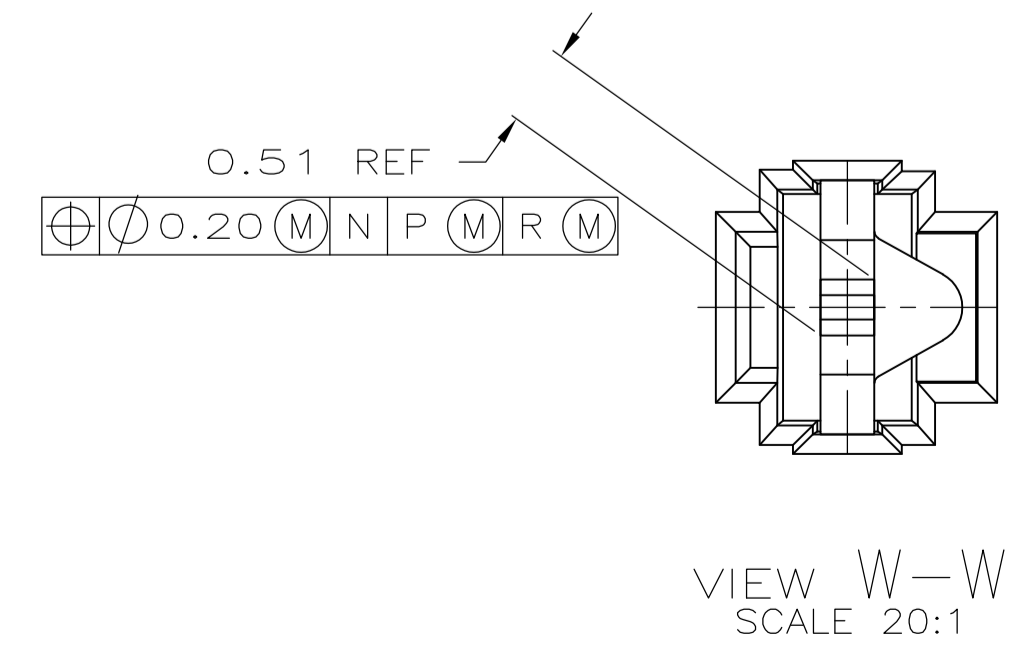
| LOC | | DIST | | REVISIONS | | | |
|-----|-----|------------------------------|---------|-----------|------|--|--|
| P | LTR | DESCRIPTION | DATE | DMN | APVD | | |
| 0 | | RELEASED PER EC 0512-0317-04 | 15DEC04 | BM | RW | | |
| 01 | | REVISED PER ECO-09-024606 | 31OCT09 | KK | AEG | | |



- △ HOUSING MATERIAL: LIQUID CRYSTAL POLYMER. COLOR: NATURAL
- △ CONTACT MATERIAL: PHOSPHOR-BRONZE
- △ CONTACT FINISH:(A)
 UNDERPLATE (ENTIRE CONTACT):
 0.00127 MIN NICKEL PER SAE-AMS-QQ-N-290
 ON MATING SURFACES:
 CONFORMS TO ALL TESTING SPECIFIED FOR TELCORDIA
 UNCONTROLLED ENVIRONMENT.
 ON LEADS:
 0.00381 MIN MATTE TIN PER ASTM B 545 OVER UNDERPLATE.
 LUBRICATION (MIN MATING SURFACES):
 SURFACE CONDITIONER AFTER PLATING.
- △ PART MARKING, LOCATED APPROXIMATELY AS SHOWN.
- △ OBSOLETE PARTS: OBSOLETE CIS STREAMLINING PER D.RENAUD/D.SINISI



RECOMMENDED CIRCUIT PATTERN
(COMPONENT SIDE)



VIEW W-W
SCALE 20:1

| | DIM C | B | DIM A | NUMBER OF SIGNAL POSITIONS | PART NUMBER |
|------------|-------|----|-------|----------------------------|-------------|
| △ OBSOLETE | 94.00 | 47 | 95.88 | 192 | 5223655-8 |
| | 82.00 | 41 | 83.88 | 168 | 5223655-7 |
| | 70.00 | 35 | 71.88 | 144 | 5223655-6 |
| | 58.00 | 29 | 59.88 | 120 | 5223655-5 |
| | 46.00 | 23 | 47.88 | 96 | 5223655-4 |
| △ OBSOLETE | 34.00 | 17 | 35.88 | 72 | 5223655-3 |
| | 22.00 | 11 | 23.88 | 48 | 5223655-2 |
| | 10.00 | 5 | 11.88 | 24 | 5223655-1 |

THIS DRAWING IS A CONTROLLED DOCUMENT.

| | | | |
|------------------|--|-------------------------|---|
| DIMENSIONS: mm | TOLERANCES UNLESS OTHERWISE SPECIFIED: | DIN B MCMMASTER 150EC04 | Tyco Electronics Corporation Harrisburg, Pa 17105-3608 |
| 0 PLC ± - | 1 PLC ± - | DR R WERTZ 150EC04 | NAME R WERTZ |
| 2 PLC ± 0.13 | 3 PLC ± - | PRODUCT SPEC | ASSEMBLY, RECEPTACLE, SIGNAL, VERTICAL, 4 ROW, Z-PACK 2mm FB, WITH SOLDER LEADS |
| 4 PLC ± - | ANGLES ± - | APPLICATION SPEC | SIZE A1 |
| MATERIAL | FINISH | WEIGHT | CAGE CODE 00779 |
| CUSTOMER DRAWING | | SCALE 4:1 | DRAWING NO 5223655 |

RESTRICTED TO SHEET 1 OF 1 REV 01