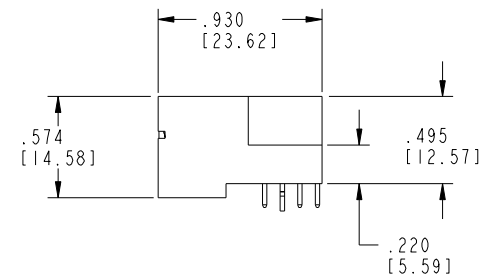
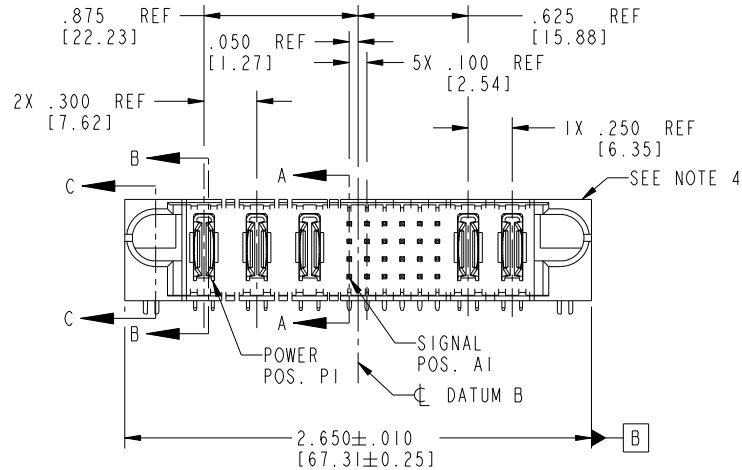
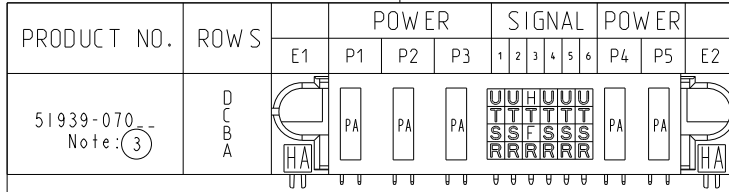


Tous droits strictement reserves. Reproduction ou communication a des tiers interdite sous quelque forme que ce soit sans autorisation ecrite du propriétaire. Propriete de c FCI. Droits de reproduction FCI.



All rights strictly reserved. Reproduction or issue to third parties in any form whatever is not permitted without written authority from the proprietor. Property of FCI. Copyright FCI.



CODE	DIM "M" MATING LENGTH	CONTACT TYPE
U	.270 [6.86]	SIGNAL
T	.270 [6.86]	SIGNAL
S	.270 [6.86]	SIGNAL
R	.270 [6.86]	SIGNAL
PA	N/A [N/A]	POWER
HA	N/A [N/A]	HOLD-DOWN
H	.220 [5.59]	SIGNAL
F	.220 [5.59]	SIGNAL

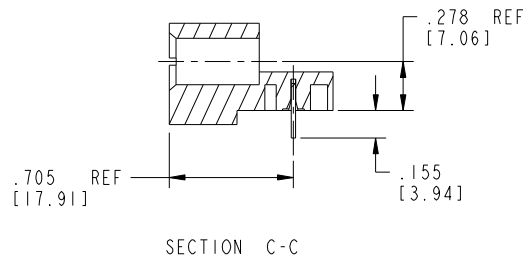
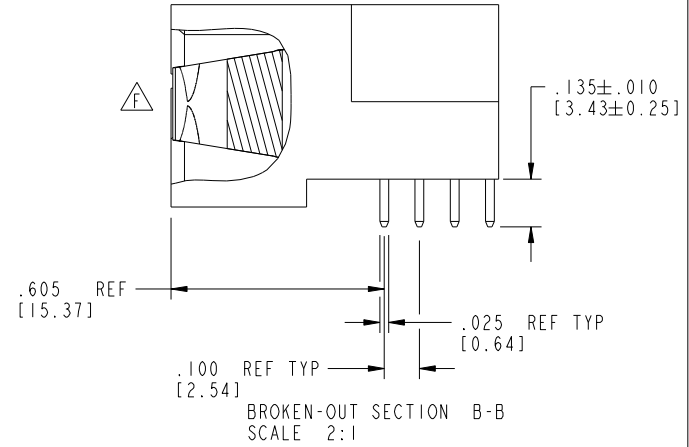
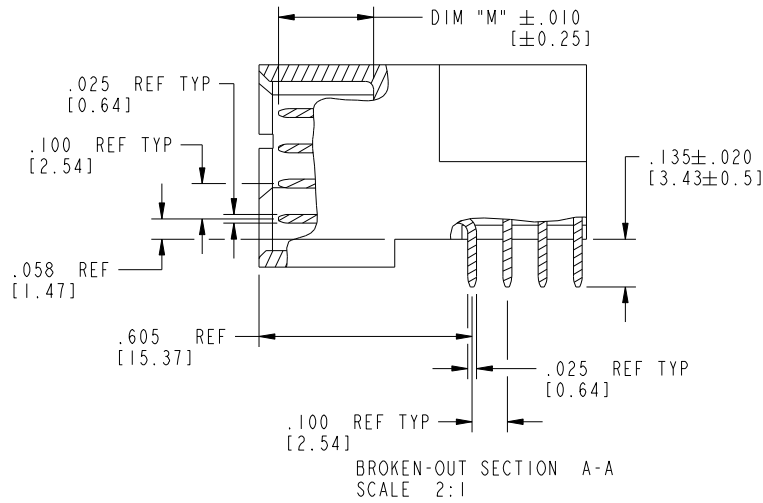
mat'l code SEE NOTE 2				tolerances unless otherwise specified		CUSTOMER		www.fciconnect.com	
lfr	ecn no.	dr	date	linear	.XX±.01/0.X±0.3	COPY		title 3ACP + 24S + 2P	
A	V03-0686	MEM	6/18/03		.XXX±.005/0.XX±0.13	projection		RIGHT ANGLE SOLDER HEADER	
B	V03-0790	MEM	7/16/03		.XXX±.002/0.XXX±0.051			product family PwrBlade code 213	
C	V03-0897	MEM	8/12/03	angles	0°±2°	INCH/MM		size dwg no 213	
D	DG05-0112	JMG	05/18/05	dr	M. MOSTOLLER 6/18/03	scale 1:1		sheet 1 of 4	
E	DG06-0014	JMG	01/12/06	enrg	M. MOSTOLLER 6/18/03	A		51939-070	
F	DG08-0273	WD	01/02/09	chr	H. BREWBAKER 6/18/03				
				appd	M. MOSTOLLER 6/18/03				
sheet index	revision sheet	F 1	F 2	F 3	F 4				

cage code 22526

Tous droits strictement reserves. Reproduction ou communication a des tiers interdicte sous quelque forme que ce soit sans autorisation ecrite du proprietaire. Propriete de c FCI. Droits de reproduction FCI.

All rights strictly reserved. Reproduction or issue to third parties in any form whatever is not permitted without written authority from the proprietor. Property of FCI. Copyright FCI.

PRODUCT NUMBER
51939-070--
Note: (3)



mat'l code		SEE NOTE 2		tolerances unless otherwise specified		CUSTOMER		FCI		www.fciconnect.com	
lfr	ecn no.	dr	date	linear	.XX±.01/0.X±0.3	COPY		title			
F					.XXX±.005/0.XX±0.13	projection		3ACP + 24S + 2P			
				angles	.XXX±.0020/0.XXX±0.051			RIGHT ANGLE SOLDER HEADER			
				dr	0°±2°	INCH/MM		product family		PwrBlade	code
				enrg	M. MOSTOLLER 6/18/03	scale		size		dwg no	213
				chr	M. MOSTOLLER 6/18/03	1:1		A		51939-070	sheet
				appd	H. BREWBAKER 6/18/03						2 of 4
sheet index	revision sheet										

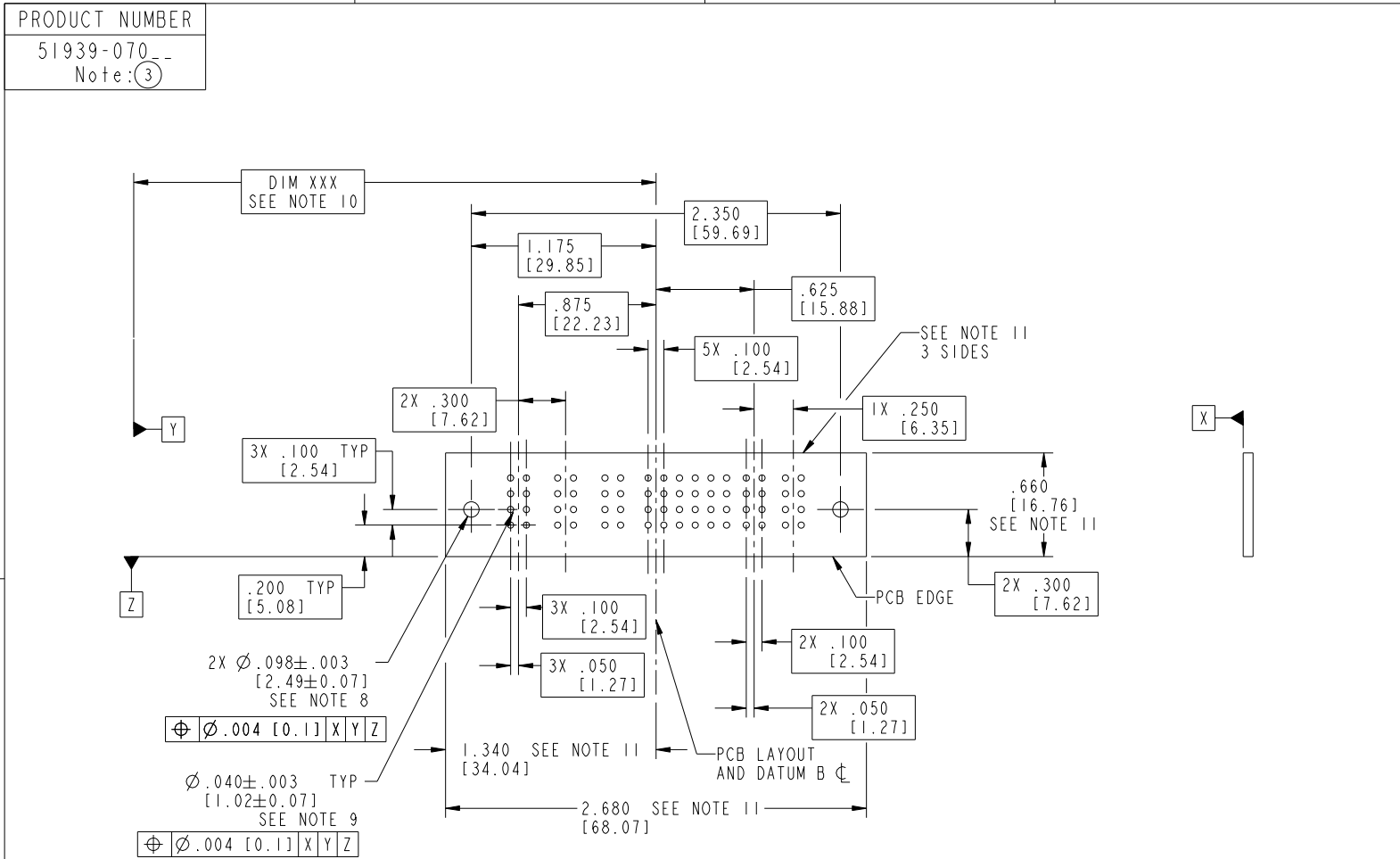
cage code 22526

Pro/E

Tous droits strictement reserves. Reproduction ou communication a des tiers interdite sous quelque forme que ce soit sans autorisation ecrite du proprietaire. Propriete de c FCI. Droits de reproduction FCI.



All rights strictly reserved. Reproduction or issue to third parties in any form whatever is not permitted without written authority from the proprietor. Property of FCI. Copyright FCI.



RECOMMENDED PCB LAYOUT

mat'l code		SEE NOTE 2		tolerances unless otherwise specified		CUSTOMER		 www.fciconnect.com	
lfr	ecn no.	dr	date	linear	.XX±.01/0.X±0.3		COPY		 title 3ACP + 24S + 2P RIGHT ANGLE SOLDER HEADER
F					.XXX±.005/0.XX±0.13		projection		
					.XXX±.0020/0.XXX±0.051		 product family PwrBlade code 213		
				angles	0°±2°		scale		sheet 3 of 4
				dr	M. MOSTOLLER	6/18/03	scale 1:1		size dwg no A 51939-070
				enrg	M. MOSTOLLER	6/18/03	cage code 22526		
				chr	H. BREWBAKER	6/18/03	4		
				appd	M. MOSTOLLER	6/18/03			
sheet index	revision sheet								

Tous droits strictement reserves. Reproduction ou communication a des tiers interdite sous quelque forme que ce soit sans autorisation ecrite du propriétaire. Propriete de c FCI. Droits de reproduction FCI.



All rights strictly reserved. Reproduction or issue to third parties in any form whatever is not permitted without written authority from the proprietor. Property of FCI. Copyright FCI.

PRODUCT NUMBER
51939-070--
Note: (3)

NOTES:

1. DIMENSIONS AND TOLERANCES ARE IN ACCORDANCE WITH ASME Y14.5M, 1994 UNLESS OTHERWISE SPECIFIED.

CONNECTOR NOTES:

- (2) HOUSING MATERIAL: UL 94 V-0 GLASS FILLED HIGH-TEMP THERMOPLASTIC
POWER CONTACT MATERIAL: COPPER ALLOY
SIGNAL PIN MATERIAL: COPPER ALLOY
- (F) 3. SEE ITEM 1 & 2 IN PRINT 10064183 FOR PLATING SPEC OF 51939-070 AND 51939-070LF RESPECTIVELY.
- (4) MANUFACTURER'S NAME, P/N, AND DATE CODE TO APPEAR ON THIS SURFACE.
- 5. PRODUCT SPECIFICATION GS-12-149.
APPLICATION SPECIFICATION BUS-20-067.
- 6. PACKAGED IN TRAYS.
- PCB NOTES:
- 7. ALL HOLE DIAMETERS ARE FINISHED HOLE SIZE.
- (8) MOUNTING HOLES, WHERE APPLICABLE, ARE UNPLATED.
- (9) $\varnothing .0453 \pm .0010$ [1.151 \pm 0.025] DRILLED HOLES PLATED WITH
.0003 [0.008] MIN SnPb OVER .001 [0.03]
TO .003 [0.08] Cu PLATING TO ACHIEVE
 $\varnothing .040 \pm .003$ [1.02 \pm .07] HOLE.
- (10) "DIM XXX" TO BE DETERMINED BY THE CUSTOMER.
- (11) CONNECTOR KEEP-OUT ZONE.
- 12. (F) SYMBOL WILL BE NEXT TO ANY DIMENSION, VIEW, OR NOTE WHICH HAS BEEN MODIFIED WITH THE CURRENT DRAWING REVISION.

mat'l code		SEE NOTE 2		tolerances unless otherwise specified		CUSTOMER		FCI		www.fciconnect.com	
ltr	ecn no.	dr	date	linear	.XX+ .01/0.X+0.3	COPY					
F				projection	.XXX+ .005/0.XX+0.13	title		3ACP + 24S + 2P			
				angles	.XXX+ .002/0.XXX+0.051	RIGHT ANGLE SOLDER HEADER					
				dr	0°+2°	product family		PwrBlade		code	
				enrg	M. MOSTOLLER 6/18/03	INCH/MM		size		213	
				chr	M. MOSTOLLER 6/18/03	scale		dwg no		sheet	
				appd	H. BREWBAKER 6/18/03	1:1		A 51939-070		4 of 4	
sheet index		revision sheet									

cage code 22526