

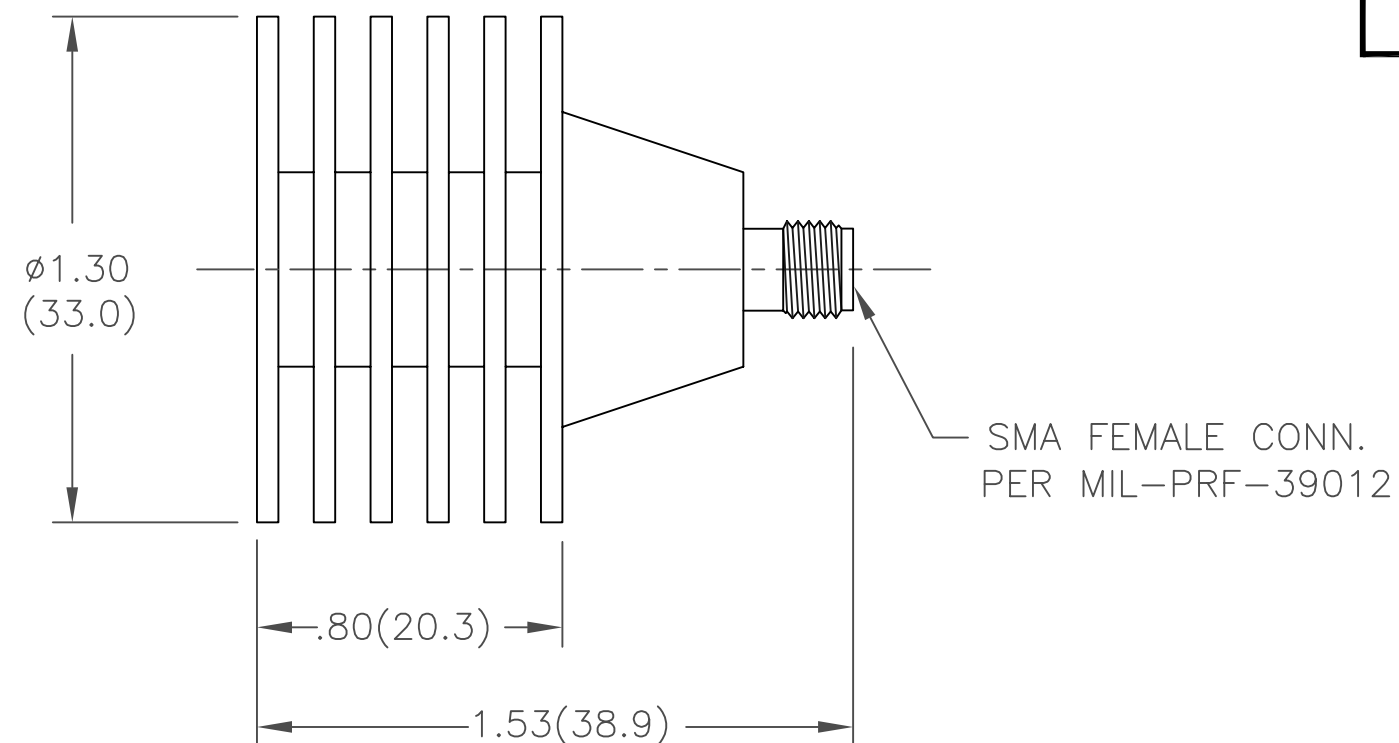
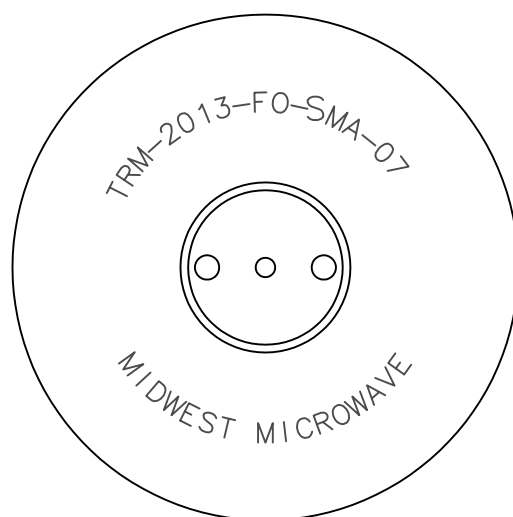
NOTES:

1.0 ELECTRICAL SPECIFICATIONS:

- 1.1 FREQUENCY RANGE: DC to 18.0 GHz
- 1.2 MAXIMUM INPUT POWER: 10 WATTS AVG. AT +40°C DERATED LINEARLY TO 1 WATT AT +125°C
- 1.3 OPERATING TEMP. RANGE: -55°C TO +125°C
- 1.4 IMPEDANCE: 50 OHMS
- 1.5 MAXIMUM VSWR: 1.05 +0.01f(GHz)

2.0 MARKING: MARK UNIT AS SHOWN.
(REF.: INK-01526-27-07)

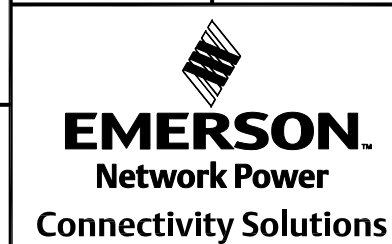
3.0 DIMENSIONS IN PARENTHESIS ARE IN MILLIMETERS.



NOTICE: The information contained in this drawing is proprietary and must not be used without the permission of Emerson Network Power.

UNLESS OTHERWISE NOTED DIMENSIONS ARE IN INCHES AND TOLERANCES ARE:
 3 PLACE DECIMALS ±.005
 2 PLACE DECIMALS ±.02
 FRACTIONS ±1/64
 PARALLELITY: T.I.R. _____
 FLATNESS: T.I.R. _____
 CONCENTRICITY: T.I.R. _____
 ANGLES AND PERPENDICULARITY: ±1'

CAGE CODE
34078 *MIDWEST MICROWAVE*



TITLE
TERMINATION
OUTLINE DRAWING

DRAWN/DATE
A.BEATTY
3/17/92
CHECKED/DATE

ENG./DATE
G.KOZAK
3/25/92
APPROVED/DATE

DRAWING NUMBER
TRM-2013-FO-SMA-07-01
REV. A1

SCALE: 2=1 SHEET 1 of 1

REV.	DESCRIPTION	DATE
-	RELEASED	3/25/92
A	ECN 15506	9/23/96
A1	ADDED TITLEBLOCK	10/26/05