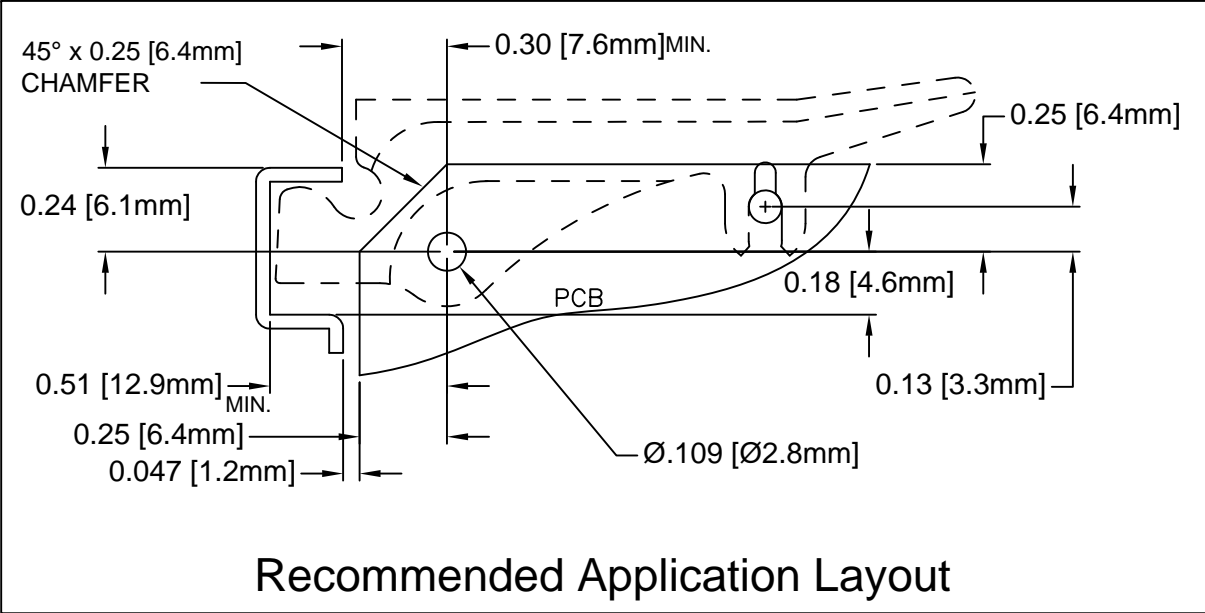
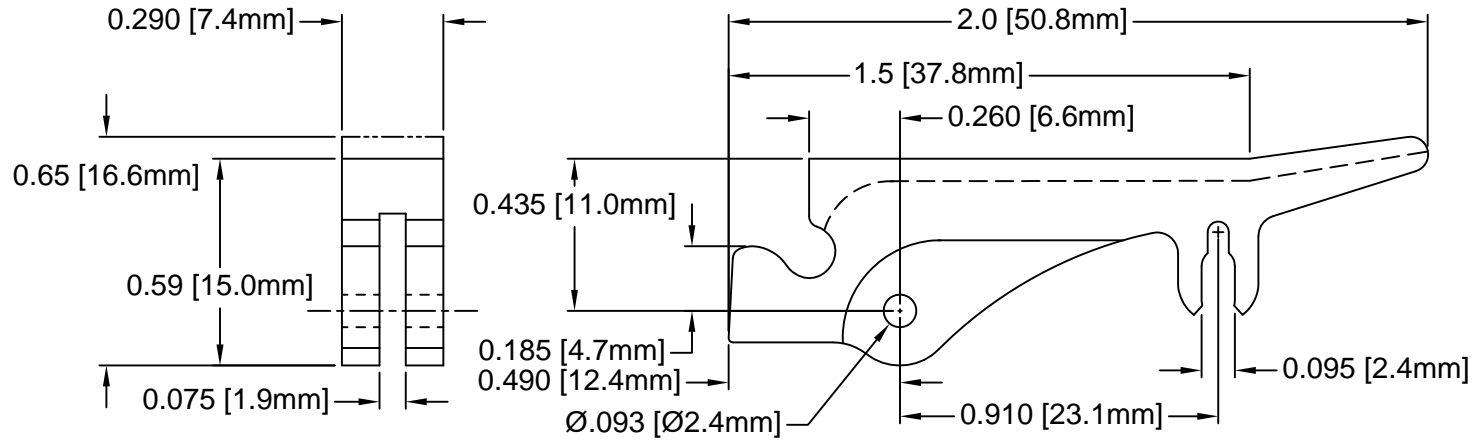




REV.	DESCRIPTION	DATE	APPROVED
B	Engineering Update w/o Changes	02/27/04	M. C.
C	Corrected Typo in Part Number Offering List	11/04/13	T. Y.
D	Added Notes 4, 5 & Updated P/N Table	10/30/15	J. C.



PART NO.	COLOR	ROLL PIN	CARD THICKNESS
LP-1107 NT	NATURAL	RP-250	1/16"(1.6mm)
LP-1107 BK	BLACK	RP-250	

5. PRE-ASSEMBLED ROLL PINS AVAILABLE UPON REQUEST.
4. ROLL PINS INCLUDED. PACKAGED SEPARATELY.
3. MATERIAL: NYLON 6/6, 94V-0, NATURAL.
2. MATERIAL: NYLON 6/6, 94V-0, BLACK.
1. GENERAL SPECIFICATIONS: BIVAR MOLDED COMPONENT SPECIFICATION BV00-E101.

STANDARD TOLERANCE (UNLESS OTHERWISE SPECIFIED)		 4 THOMAS, IRVINE, CA. 92618 TEL: (949) 951-8808 FAX: (949) 951-3974			
DECIMALS	ANGULAR				
.X ± .1	X° ± 1°	 <b>TITLE:</b> INSERTER/EXTRACTOR			
.XX ± .01					
.XXX ± .005		DESIGNED: <b>S. Irving</b>	DATE: <b>11/14/00</b>	<b>PART NO:</b> LP-1107 XX	REVISION: <b>D</b>
		CHECKED: <b>M. Chen</b>	DATE: <b>07/02/02</b>	<b>CAGE CODE :</b> 32559	<b>SHEET #</b> 1 OF 1
CAD GENERATED DOCUMENT. DO NOT MEASURE DRAWING.					