

REV U

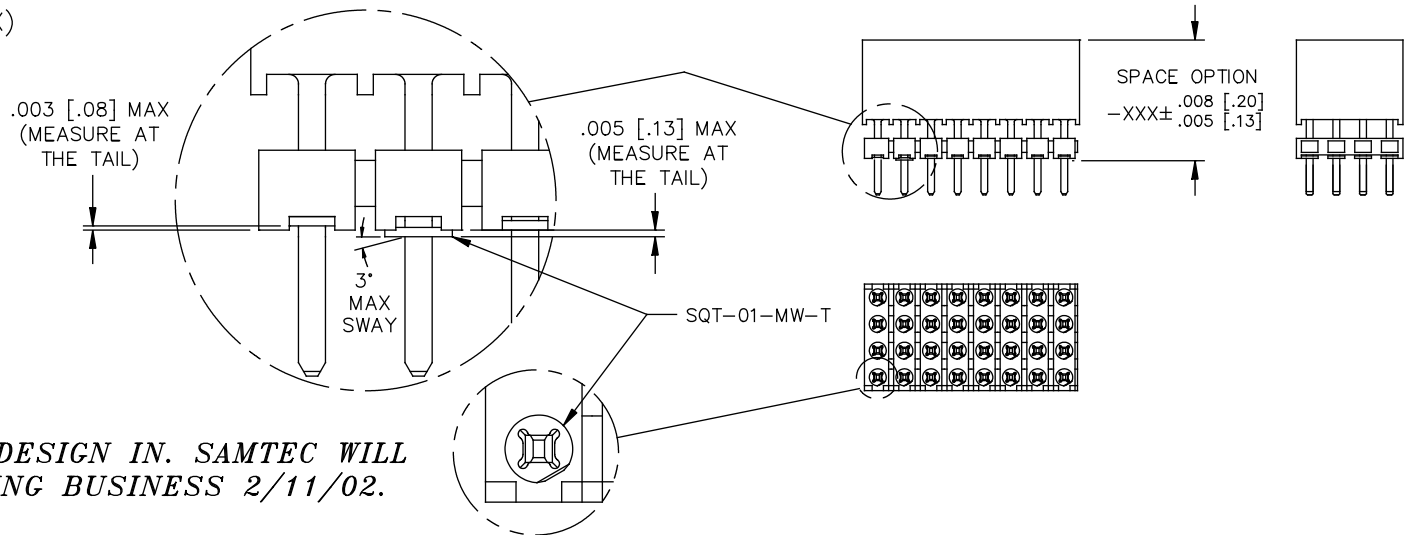
FIG 2

\*\* -MW: METAL WASHER  
(ONE PER POSITION)  
(5 POS. MIN, 30 POS. MAX)

DIMENSIONS ARE IN INCHES UNLESS OTHERWISE NOTED TOLERANCES ARE:  
 ONE PLACE DECIMALS ± .1[.25] THREE PLACE DECIMALS ± .005[.127] ANGLES ± 2°  
 TWO PLACE DECIMALS ± .01[.25] FOUR PLACE DECIMALS ± .0020[.051]

TITLE: ELEVATED  
2MM C.L. ASM  
SOCKET

DWG NO: YTE-1XX-XX-XX-X-XXX-XXX-XX  
SHEET 2 OF 2



\*\* - MW OPTION, DO NOT DESIGN IN. SAMTEC WILL ONLY SUPPORT EXISTING BUSINESS 2/11/02.

-02 STYLE ONLY

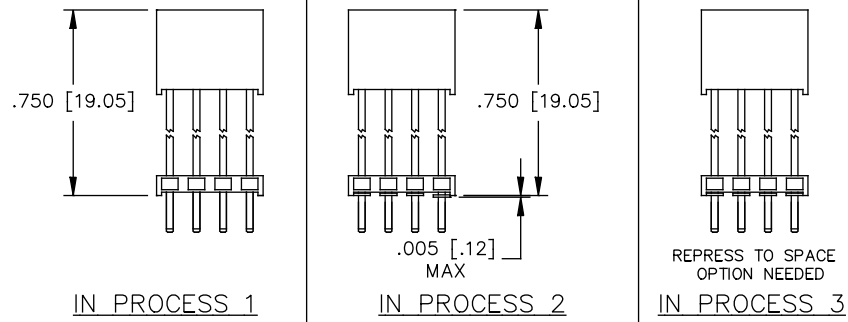


TABLE 1

STYLE	ROW	NO. OF POS.	PKG TUBE	TUBE PLUG
-02	-Q	15-50	PT-1-24-03-51	TP-13
-03	-Q	15-50	PT-1-24-16-29	TP-07
-02, -03	-Q	02-14	LAYER PACKAGING	
-02	-5	15-50	PT-1-24-01-56	TP-31
-03	-5	15-50	PT-1-24-01-08	TP-13
-02, -03	-5	02-14	LAYER PACKAGING	
-02	-6	15-50	PT-1-24-02-74	TP-13
-03	-6	15-50	PT-1-24-01-08	TP-13
-02, -03	-6	02-14	LAYER PACKAGING	

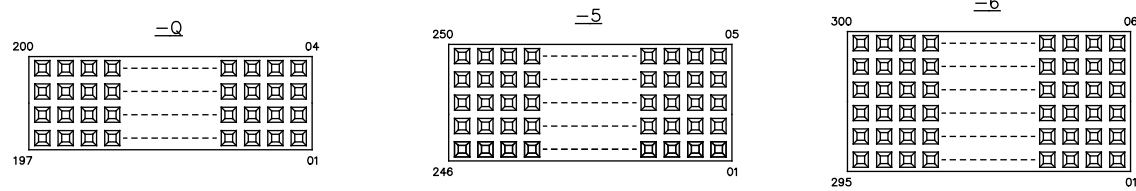


FIG 3  
POLARIZATION OPTION LOCATION  
INSERT PK-07-N INTO SPECIFIED POSITION AND BREAK OFF TAB

NOTE:  
1. MINIMUM CONTACT RETENTION: 0.5 LB PER PIN.

PROPRIETARY NOTE  
THIS DOCUMENT CONTAINS CONFIDENTIAL AND PROPRIETARY INFORMATION AND ALL RIGHTS, INCLUDING PATENT RIGHTS, ARE EXPRESSLY RESERVED BY SAMTEC, INC. THIS DOCUMENT SHALL NOT BE DISCLOSED, IN WHOLE OR PART, TO ANY UNAUTHORIZED PERSON OR ENTITY REPRODUCED, TRANSMITTED, OR USED IN ANY MANNER WITHOUT THE EXPRESS WRITTEN CONSENT OF SAMTEC, INC.

PLOT SCALE: 1=.44 / DIMSCALE: .3

EXISPROD\ASSEMBLY\2MM YTE-ASM2

520 PARK EAST BLVD. NEW ALBANY, INDIANA 47150  
PHONE (812) 944-6733 P.O. BOX 1147  
CODE 55322

MADE BY: BRATCHER 1-26-99

YTE-1XX-XX-XX-X-XXX-XXX-XX  
SHEET 2 OF 2