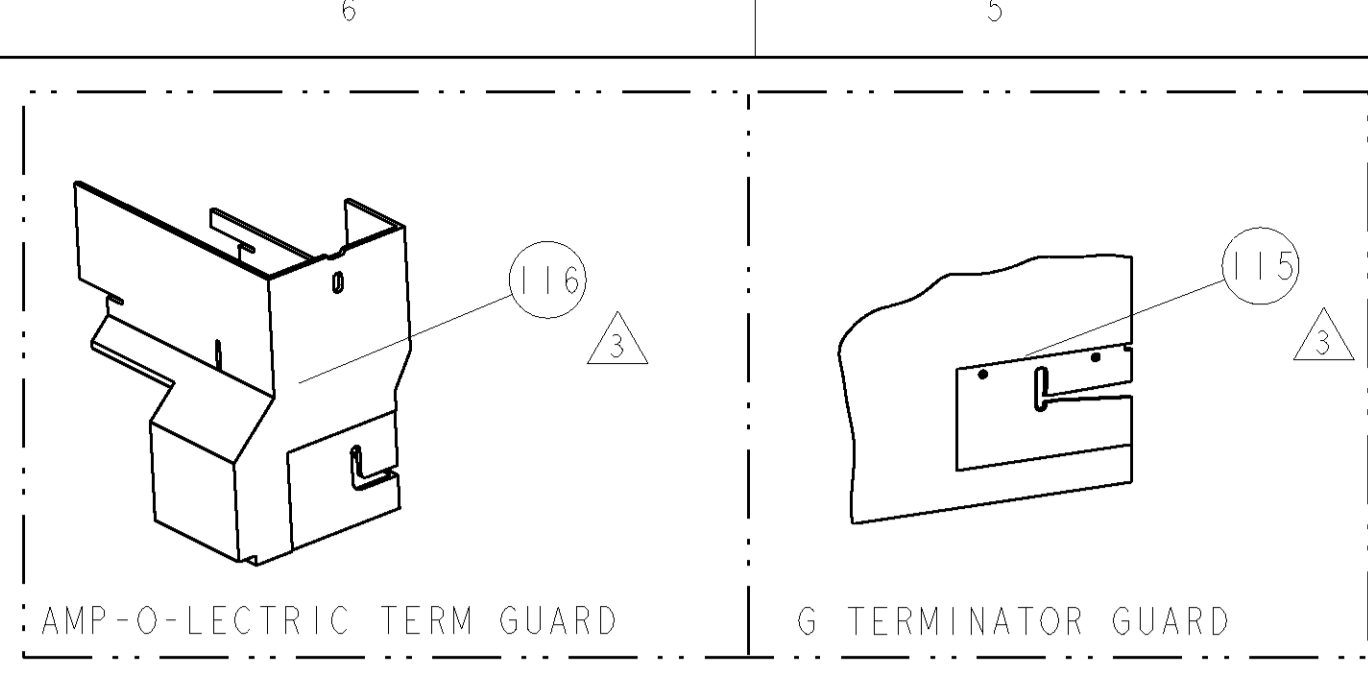


PART NUMBER	REV	FIRST USED	POWER UNIT	FEED TYPE	DESCRIPTION
1855305-1	B	122500-1	LEADMAKER	POST FEED	CUTS CARRIER
1855305-2	B	565435-5	BENCH MODEL K	PRE FEED	CUTS CARRIER
1855305-3	B	354500-1	BENCH MODEL G	PRE FEED	CUTS CARRIER
1855305-6	A	122500-1	LEADMAKER	POST FEED	CONTINUOUS CARRIER
7-1855305-7	A	-	-	-	SPARE PARTS

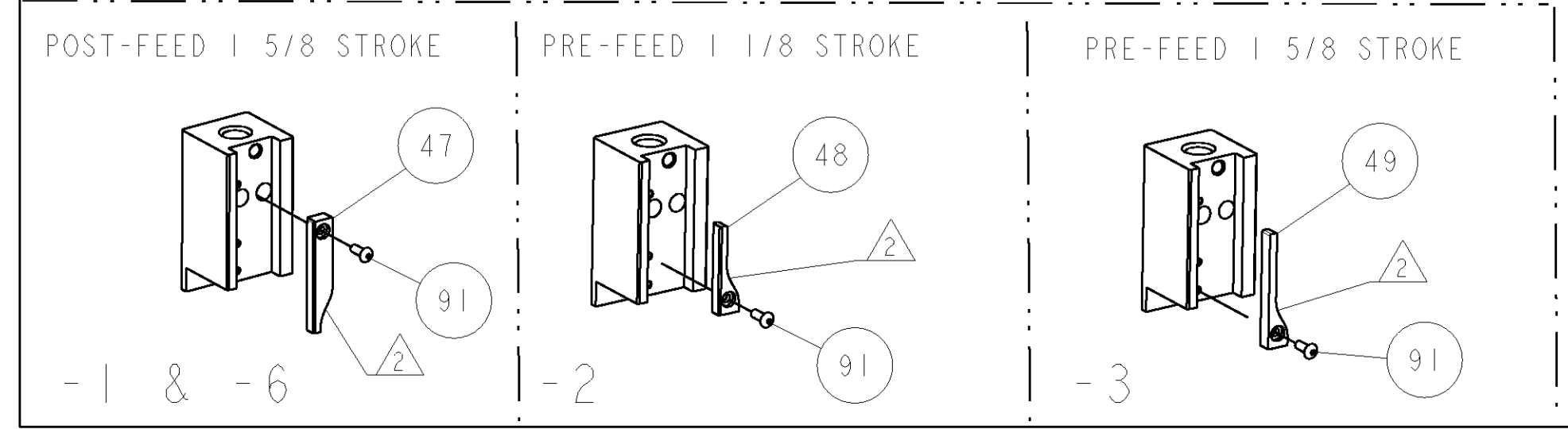
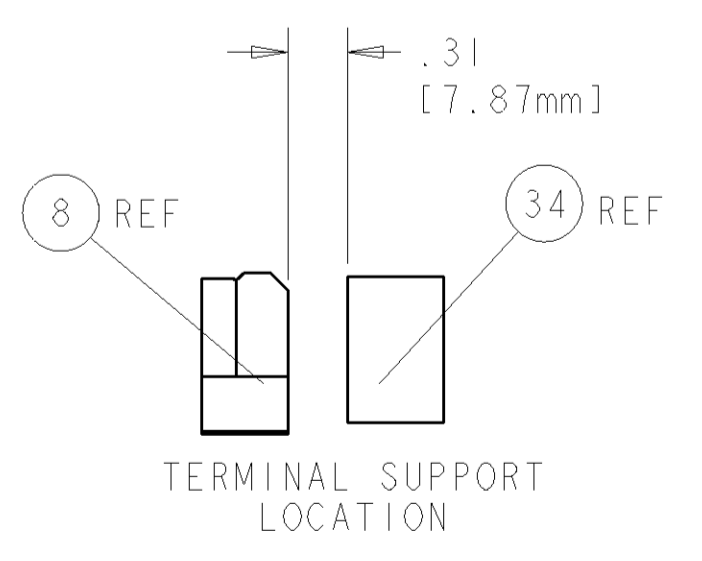
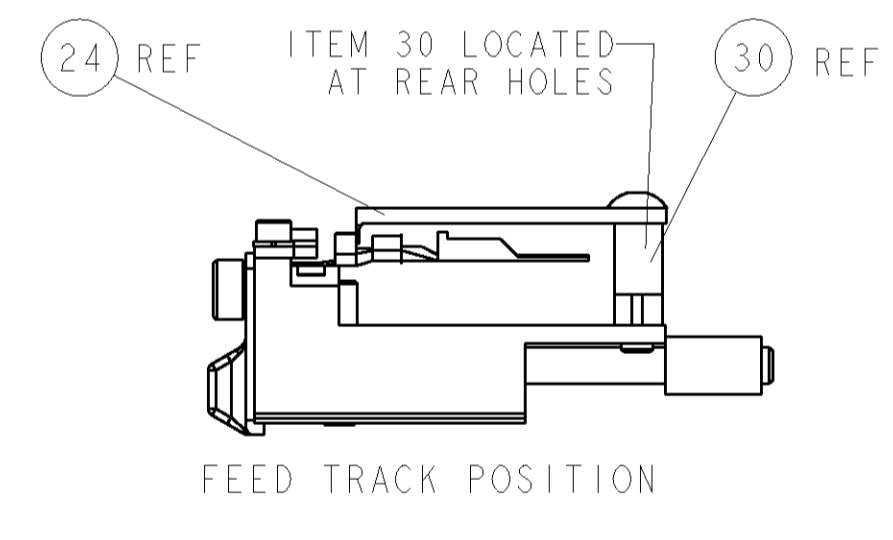
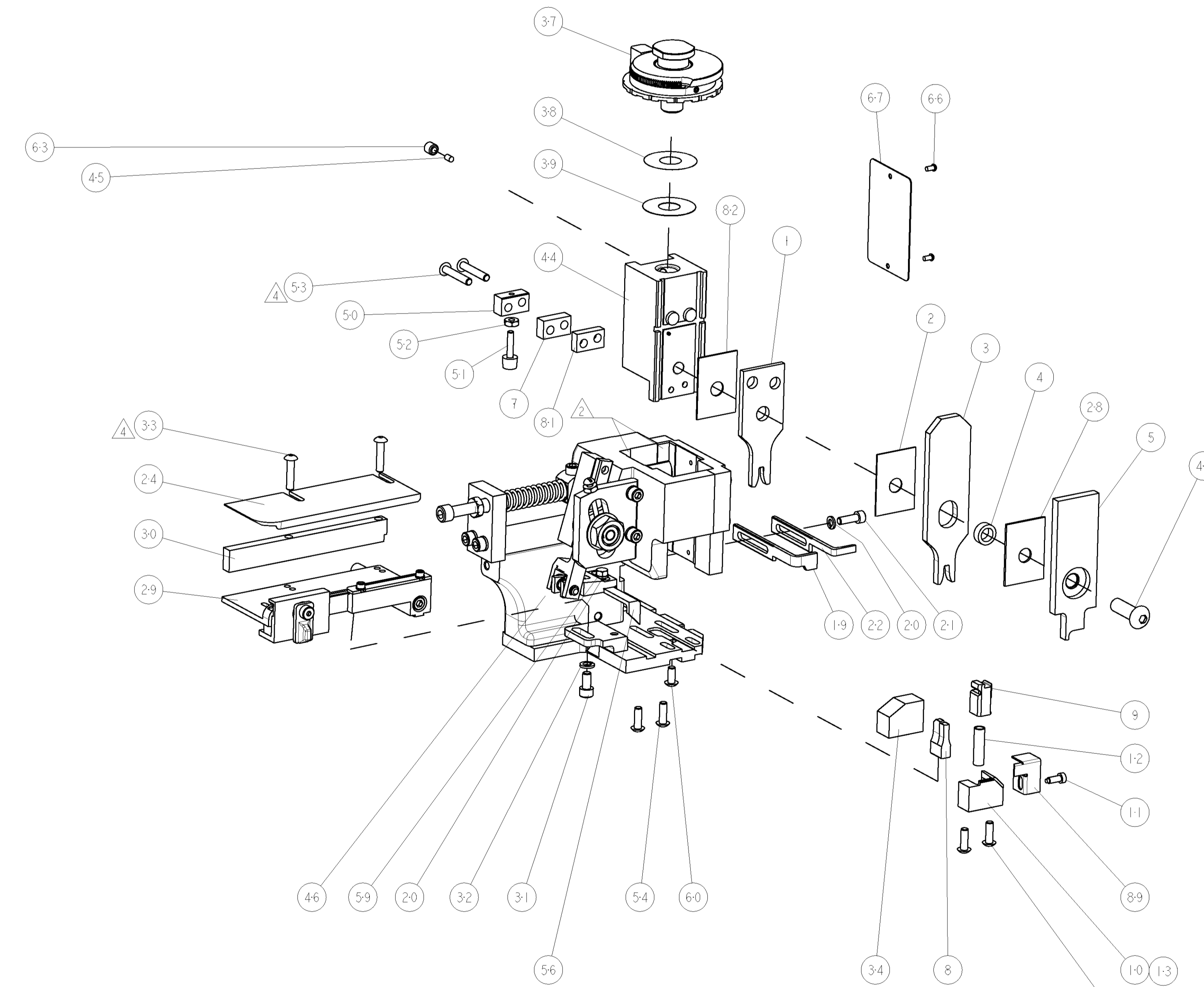


TE PN		MFR PN		PACKARD TERMINAL-PACKARD CRIMP SPECS		
1949404-1	-	12020126	-	CRIMP HEIGHT	WIRE SIZE	REF SETTING
-	-	-	-	1.65±0.05mm [.065±.002]	2mm2	C4
-	-	-	-	1.55±0.05mm [.061±.002]	1.5mm2	D0
-	-	-	-	1.55±0.05mm [.061±.002]	1mm2	D0
-	-	-	-	CRIMP	SIZE	TYPE
-	-	-	-	WIRE	2.97mm [.117]	F
-	-	-	-	INSUL	3.66mm [.144]	F
-	-	-	-	WIRE STRIP LENGTH	TERM APPL SPEC	FEED
4.85-5.23	NONE	-	17.45mm	APPLICATOR INSTRUCTIONS	408-8040	SET UP GAGE
-	-	-	-	-	-	458637-1

LOC	DIST	REV	DATE	BY	APPV
A	66	A	11JUL2007	BH	BH
		B	21OCT2009	MY	TE

- △ RECOMMENDED SPARE PARTS
- △ GREASE LIGHTLY
- △ GUARD MUST BE IN PLACE WHEN OPERATING APPLICATOR IN A BENCH MACHINE
- △ CUT TO LENGTH AT ASSEMBLY.

*** WARNING**
ON INSTALLATION, SET WIRE DISC TO LARGEST WIRE SIZE SETTING. USE OF SETTINGS BELOW MIN. REQUIRED CRIMP HEIGHT SETTING WILL CAUSE DAMAGE TO CRIMP TOOLING.



QTY	REF	DESCRIPTION	ITEM NO
1	REF	455749-1 GUARD WINDOW	116
1	REF	679532-1 INSERT, GUARD	115
1	1	1-21002-7 SCR, BTN SKT HD CAP 6-32 X .375	91
1	1	318563-1 GUARD, FRONT CHIP	89
1	1	455888-7 SPACER, CRIMPER	82
1	1	7-240641-1 SPACER	81
1	1	4088040 SF APPL INST 408-8040	72
1	1	217238-1 GENERAL INSTRUCTION PKG	71
1	1	461264-5 PLATE, IDENTIFICATION	67
2	2	21017-2 SCREW, DRIVE	66
1	1	21009-2 SCR, SET, SELF LOCKING 1/4-20 X .250	63
1	1	22733-8 SCR, BHSC, SELF-LOCKING, 8-32 X .375	60
1	1	2-22603-0 SCR, HEX HD CAP 8-32 X .312	59
1	1	458537-2 PAWL, FEED	56
4	4	2-21002-2 SCR, BTN SKT HD CAP 8-32 X .500	54
2	2	8-21002-9 SCR, BTN SKT HD CAP 8-32 X 1.00	53
1	1	21018-5 NUT, HEX, REG 6-32	52
1	1	811242-2 BUMPER, HOLD DOWN	51
1	1	690753-1 SPACER, TONKER	50
1	1	690602-6 CAM, PRE FEED, 1 5/8	49
1	1	690602-5 CAM, PRE FEED, 1 1/8	48
1	1	690501-4 CAM, POST-FEED 1 5/8	47
1	1	459456-1 APPL. BASIC SUB ASSY (SIDE WISE MQCA)	46
1	1	690191-1 PLUG, NYLON	45
1	1	819307-4 RAM, SIDE FEED	44
1	1	7-21002-9 SCR, BTN SKT HD CAP 5/16-24 X 1.00	41
1	1	690125-1 SHIM SUB-ASSY	39
1	1	469367-3 SHIM	38
1	1	879103-2 FINE ADJUST HEAD ASSEMBLY	37
1	1	690786-3 TERMINAL SUPPORT	34
2	2	2-21002-4 SCR, BTN SKT HD CAP 8-32 X .750	33
1	1	21024-5 WASHER, SPRG LOCK, REG NO 10	32
1	1	3-21000-4 SCR, SKT HD CAP 10-32 X .375	31
1	1	1320908-2 SPACER, STRIP GUIDE	30
1	1	1633091-7 ASSEMBLY, STRIP GUIDE	29
1	1	1-455888-0 SPACER, CRIMPER	28
1	1	1320928-3 PLATE, STRIP GUIDE	24
1	1	690472-2 STRIPPER	22
1	1	2-21000-7 SCR, SKT HD CAP 8-32 X .500	21
2	2	21024-4 WASHER, SPRG LOCK, REG NO 8	20
1	1	691353-1 STRIPPER	19
1	1	679625-1 SHEAR HOLDER, FRONT (NO CUT)	13
1	1	3-22280-3 SPRING, COMPRESSION	12
1	1	690461-1 STOP, SHEAR	11
1	1	690459-1 SHEAR HOLDER, FRONT	10
1	1	454276-1 FLOATING SHEAR, FRONT	9
1	1	2-163335-8 ANVIL, COMBINATION	8
1	1	4-240641-5 SPACER	7
1	1	2-455889-0 DEPRESSOR, SHEAR	5
1	1	238011-3 BLOCK, CRIMPER SPACER	4
1	1	5-1633471-5 CRIMPER, INSULATION F	3
1	1	455888-5 SPACER, CRIMPER	2
1	1	9-1633305-6 CRIMPER, WIRE PREMIUM	1

DIMENSIONS: INCHES		TOLERANCES UNLESS OTHERWISE SPECIFIED:		DWN: B. HIGMAN 26FEB2005		Tyco Electronics Harrisburg, PA 17105-3608	
9 PLC	±.001	3 PLC	±.001	APV: B. HIGMAN 26FEB2005	NAME: FINE ADJUST SIDE FEED HDM APPLICATOR		
1 PLC	±.001	5 PLC	±.001	APV: T. ELBIN 26FEB2005	SIZE: A1 00779 C=1855305		
3 PLC	±.001	4 PLC	±.001	MATERIAL: - FINISH: -			
4 PLC	±.001	ANGLES: ±.0001		WEIGHT: -			
CUSTOMER DRAWING				SCALE: 3:5 SHEET: 1 OF 1 REV: B			