

6EHQ1

SAFETY ORGANIZATION(S):

THIS FILTER HAS BEEN FORMALLY RECOGNIZED, CERTIFIED OR APPROVED BY THE LISTED AGENCY. THEREFORE, ALL TEST/REQUIREMENTS SPECIFIED IN THE LATEST REVISION OF THE FOLLOWING AGENCY STANDARDS HAVE BEEN MET:

UL RECOGNIZED	UL 544
CSA CERTIFIED	CSA 22.2, NO.0,0.4,8
VDE APPROVED	VDE 565-3
SEV APPROVAL PENDING	

OPERATING SPECIFICATIONS:

LINE VOLTAGE/CURRENT, 6 AMP, 120/250 VAC
 5 AMP./40°C, 250 VAC

LINE FREQUENCY, 50-60Hz

MAX. LEAKAGE CURRENT, EACH:
 LINE TO GROUND, 2 μA at 120V 60Hz
 5 μA at 250V 50Hz

OPERATING AMBIENT TEMP. RANGE, -10°C TO +40°C @ RATED CURRENT, I_r

IN AN AMBIENT, T_a, HIGHER THAN 40°C, THE MAXIMUM OPERATING CURRENT, I_o, IS AS FOLLOWS:

$$I_o = I_r \sqrt{\frac{85 - T_a}{45}}$$

RELIABILITY SPECIFICATIONS:

STORAGE TEMPERATURE, -40°C TO +85°C
 HUMIDITY, 21 DAYS @ 40°C 95% RH
 CURRENT OVERLOAD TEST, 6 TIMES RATED CURRENT FOR 8 SECONDS

TEST SPECIFICATIONS:

INDUCTANCE, 48.8 mH NOMINAL
 CAPACITANCE, (MEASURED @ 1 KHz, 0.25VAC MAX., 25°C±1°C)

LINE TO LINE, 1.97 μF ±20%
 DISCHARGE RESISTOR, 165KΩ

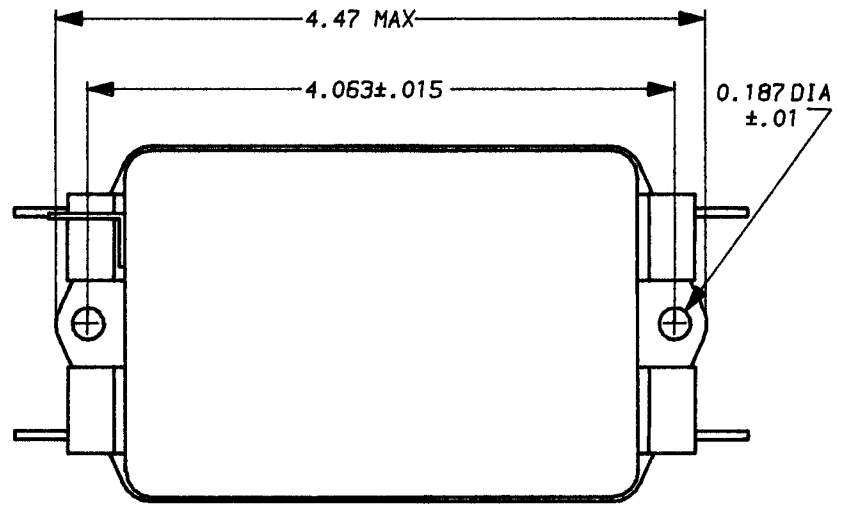
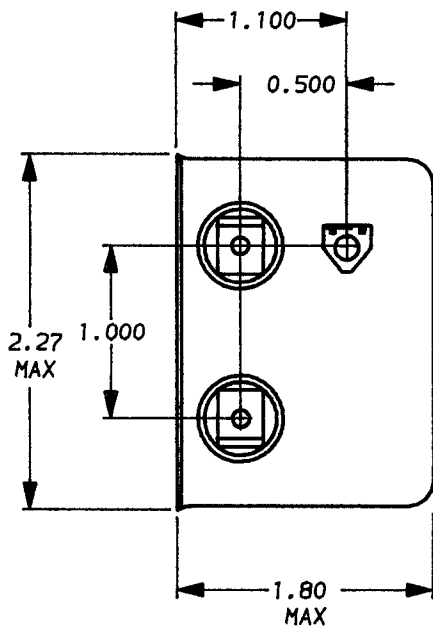
LINE/GROUND AND LINE/LINE, 6000MΩ (MIN) AT 100VDC
 INSULATION RESISTANCE, 20°C AND 50% RH

RECOMMENDED RECEIVING INSPECTION HIPOT:

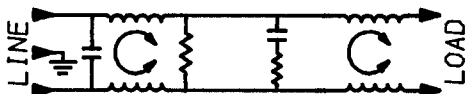
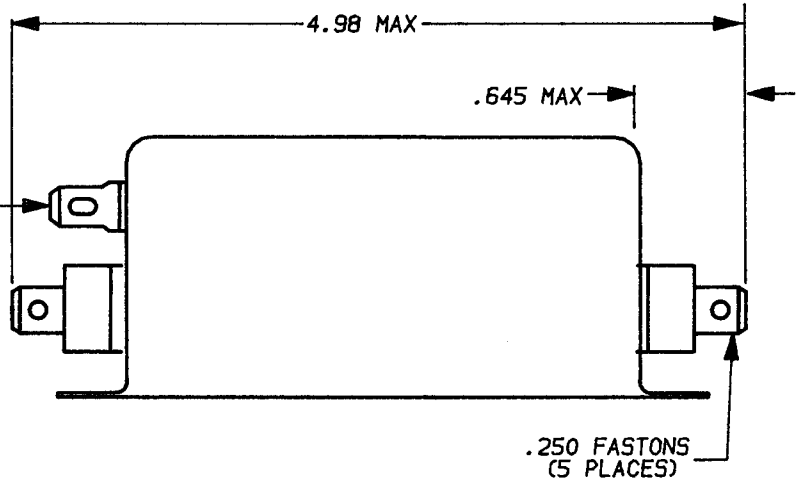
LINES TO GROUND, 2250 VDC FOR 1 MINUTE
 LINE TO LINE, 1450 VDC FOR 1 MINUTE

FILTER APPROVAL:

THE BEST WAY TO SELECT AND QUALIFY A FILTER IS FOR YOUR ENGINEERING TO TEST THE UNIT IN YOUR EQUIPMENT.



0.069 X 0.155 SLOT



50 _n - 50 _n (MINIMUM) INSERTION LOSS												
FREQUENCY MHz	.01	.015	.02	.05	.15	.5	2	5	7	10	20	30
COMMON dB	24	27	29	39	50	34	36	30	30	24	16	15
DIFF. dB	6	4	10	43	70	75	75	65	50	55	50	40

UNLESS OTHERWISE SPECIFIED, TOLERANCE TO BE ±.025

MATERIAL & FINISH, AS SUPPLIED

This document is proprietary to CORCOM INC. and is not to be reproduced nor used for manufacturing purposes except on CORCOM'S prior written consent.

corcom
 LIBERTYVILLE, IL 60048

POWER LINE FILTER

DATE: 10-1-93 CATALOG NO.
 APPROVD. TAM 6EHQ1
 CAD NO. 6EHQ1.01