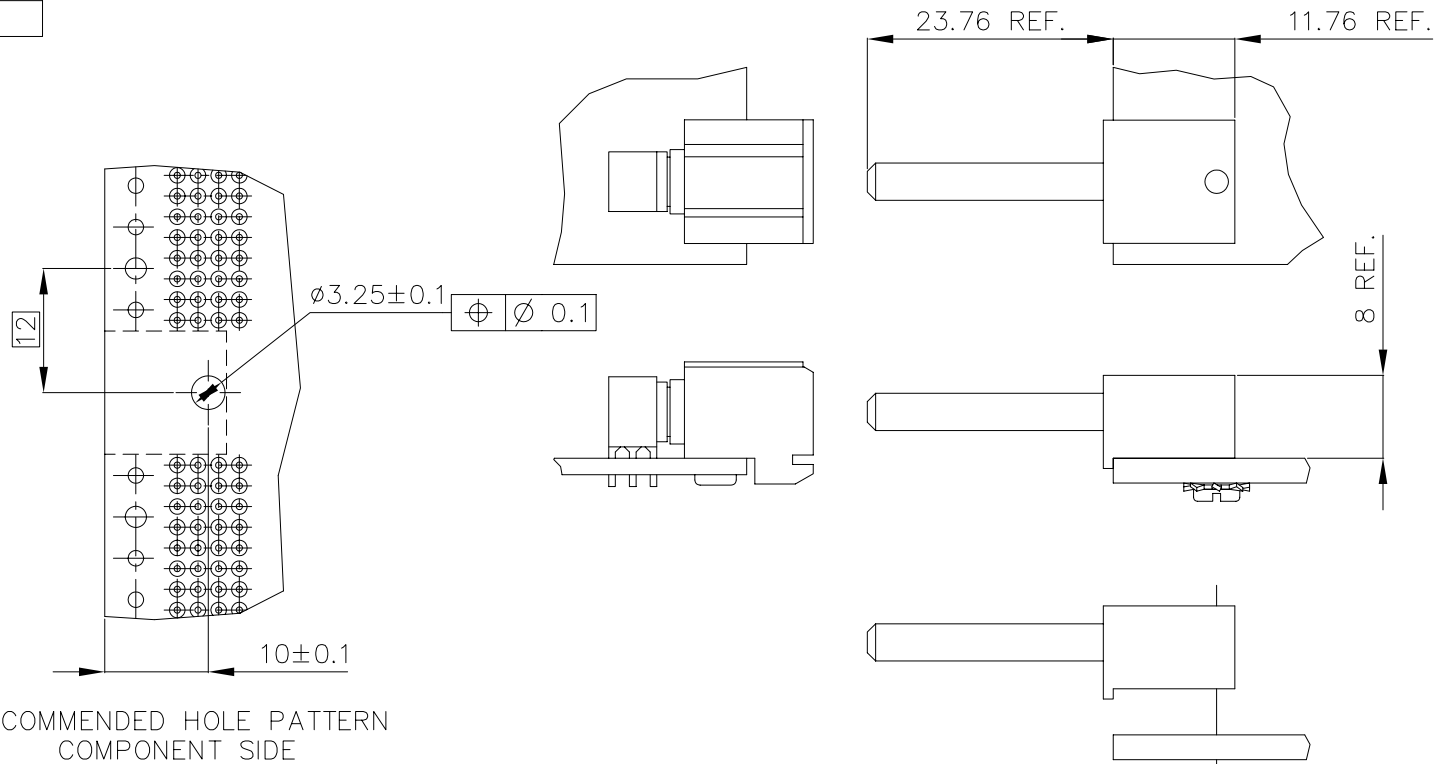


PRODUCT NUMBER
70419-001
70419-001LF



RECOMMENDED HOLE PATTERN
COMPONENT SIDE

NOTES:

1. RECEPTACLE HOUSING/CONTACT SHOWN FOR CLARITY ONLY AND DOES NOT COME WITH ASSEMBLY
2. 70419-001 MUST BE USED WITH THE METRAL(tm) PASS-THRU-GROUND RECEPTACLE, P.N. 91877-003
3. R/A GUIDE BLOCK/PIN MATERIAL: BRASS
PLATING: SnPb
LEAD FREE PLATING: Sn
4. USE #10 TORX® DRIVE TOOL
5. PART NUMBERS WIT "LF" SUFFIX AT THE END ARE LEAD FREE OPTION.
6. IF "LF" P/N THE PRODUCT MEETS EUROPEAN UNION DIRECTIVES AND OTHER COUNTRY REGULATION AS DESCRIBED IN GS-22-008.

#4-40 UNC TORX® STAINLESS
STEEL PANHEAD SCREW
SEE NOTE 4

mat'l. code		surface		tolerance		projection		product family	
SEE NOTES		ISO 1302 ✓		ISO 406 ISO 1101		mm		METRAL ACC	
ltr	ecn no	dr	date	tolerances unless otherwise specified		mm		title	
A	v60188	SCS	2/02/96	angles	linear	xx ±.01/.3		R/A GUIDE/GROUND PIN ASSEMBLY	
B	v60425	SCS	2/13/96	σ±z'		xxx ±.005/.13			
C	v12643	EPK	11/12/01			xxxx ±.0020/.050		scale 1:1	
D	M06-0055	MHT	2/01/06	dr	STU STONER	1/25/96		dwg no	
E	M06-0286	MNR	7/27/06	enr	R. DOUTRICH	1/25/96		sheet 1 of 1 size	
				chr	STU STONER	1/25/96		70419 A3	
				appd	STU STONER	1/25/96		type Product Customer Drawing	
sheet	revision	E							
index	sheet	1							

FCJ
FCJconnect.com

Copyright FCJ